

VISUAL APPROACH CHART -
ICAO

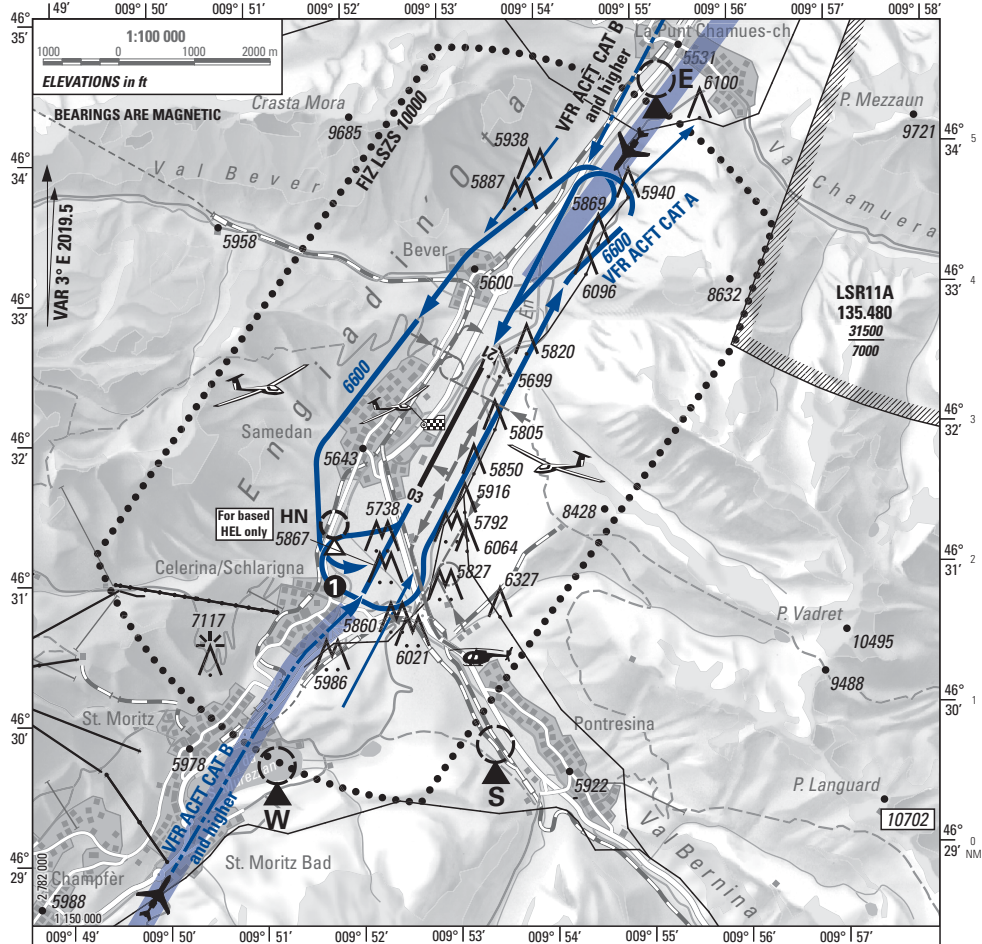
MOUNTAINOUS AREA

SAMEDAN (LSZS)

RWY 03/21

ATIS	136.160 HO
AFIS	135.330 HO
DELIVERY	121.880 HX

ELEV 5602 ft (1708 m)



CTN: AD LSZS: Familiarization mandatory.

CTN: REP HN: for based HEL only

MNT Samedan ATIS (confirm ATIS designator)

— Straight-in approach for VFR ACFT CAT B and higher **CTN: IFR APCH AREA**

■ Noise sensitive areas

1 TKOF RWY 21 DEP via ALBULA / ZERNEZ
CTN: Expect strong Maloja winds

HEL Routes via Whiskey, Sierra and Echo MNM 6000, crossing of RWY-axis via FATO in accordance with AFIS only, Helipad advised by AFIS

○ Announce FLT ALT

Intense Glider ACT MAY-OCT
GLD FREQ: A/A 123.680

CTN:

→ VFR RAC 4-5 Mountain Flights

Altitudes in ft; Heights in ft

COR: FREQ ATIS/AFIS (W/E 14/MAY/2026)

© swisstopo

THIS PAGE INTENTIONALLY LEFT BLANK