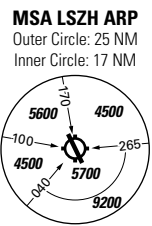
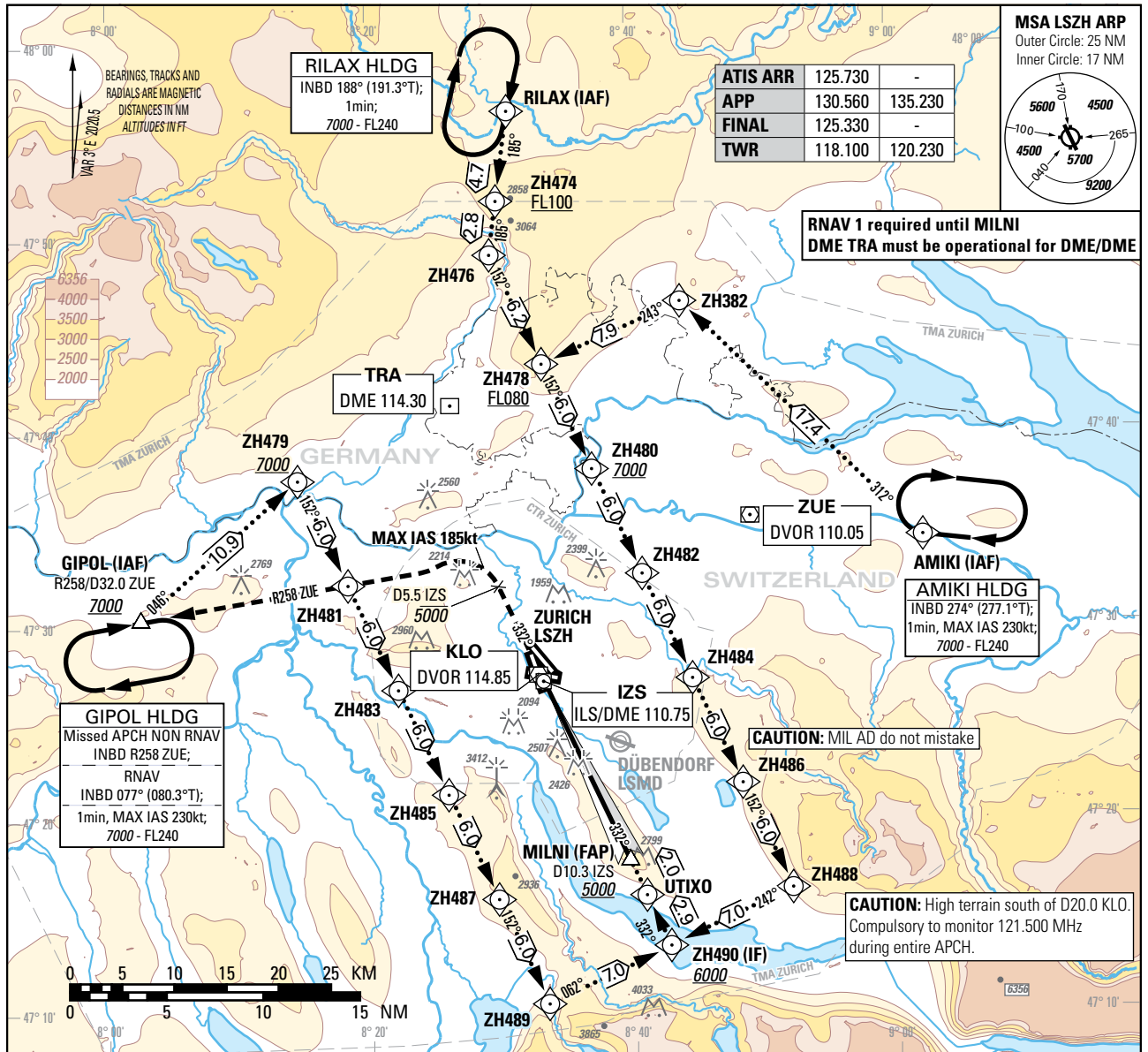


Instrument Approach Chart
(IAC) - ICAO

AD ELEV 1417ft

TRANSITION LEVEL by ATC
TRANSITION ALTITUDE 7000

ZURICH (LSZH)
ILS RWY 34



ATIS ARR	125.730	-
APP	130.560	135.230
FINAL	125.330	-
TWR	118.100	120.230

RNAV 1 required until MILNI
DME TRA must be operational for DME/DME

GIPOL HLDG
Missed APCH NON RNAV
INBD R258 ZUE;
RNAV
INBD 077° (080.3°T);
1min, MAX IAS 230kt;
7000 - FL240

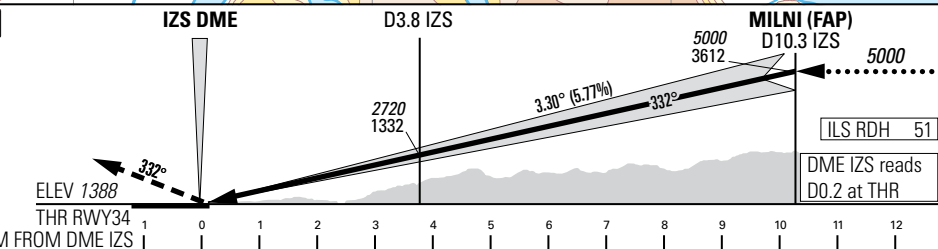
AMIKI HLDG
INBD 274° (277.1°T);
1min, MAX IAS 230kt;
7000 - FL240

CAUTION: MIL AD do not mistake

CAUTION: High terrain south of D20.0 KLO.
Compulsory to monitor 121.500 MHz during entire APCH.

MISSED APPROACH

Initial climb clearance 5000.
Climb straight ahead. At D5.5 IZS past the station turn left (MAX IAS 185kt during turn) and intercept R258 ZUE. Continue climb to 7000. Proceed to GIPOL.
Cross D5.5 IZS at or below 5000.
Cross GIPOL at or above 7000.



Missed APCH climb gradient requirement	STRAIGHT-IN APPROACH								
	A	B	C	D	D _L				
OBSTACLE CLEARANCE ALTITUDE (HEIGHT)									
2.5%	1592 (204)	1602 (214)	1615 (227)	1625 (237)					
2.8% to 2200	1543 (155)	1552 (164)	1560 (172)	1571 (183)	1572 (184)				
DECISION ALTITUDE (HEIGHT)									
2.8% to 2200	1588 (200)								
IZS DME	2	3	4	5	6	7	8	9	10
RECOMMENDED CROSSING ALTITUDE (HEIGHT)	2090 (700)	2440 (1050)	2790 (1400)	3140 (1750)	3490 (2100)	3840 (2450)	4190 (2800)	4540 (3150)	4890 (3500)

ROD	GS kt	90	110	130	150
	FT/MIN	526	642	759	876
NOTE					
Level assignments will be issued by ATC.					

COR: ZH492 renamed to UTIXO (WEF 19FEB2026)

THIS PAGE INTENTIONALLY LEFT BLANK