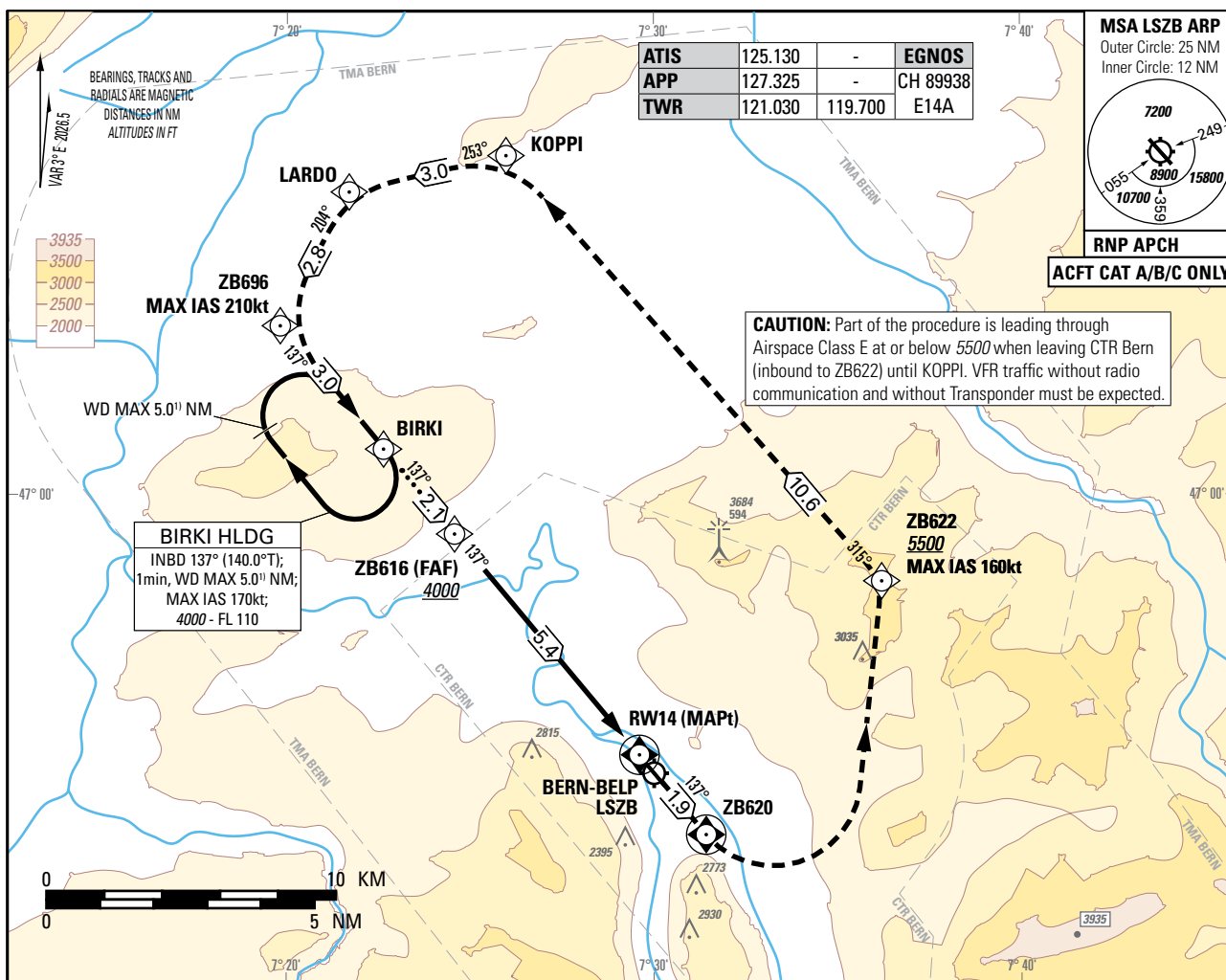


Instrument Approach Chart  
(IAC) - ICAO

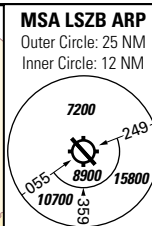
AD ELEV 1675ft

TRANSITION LEVEL by ATC  
TRANSITION ALTITUDE 6000

BERN-BELP (LSZB)  
RNP RWY 14

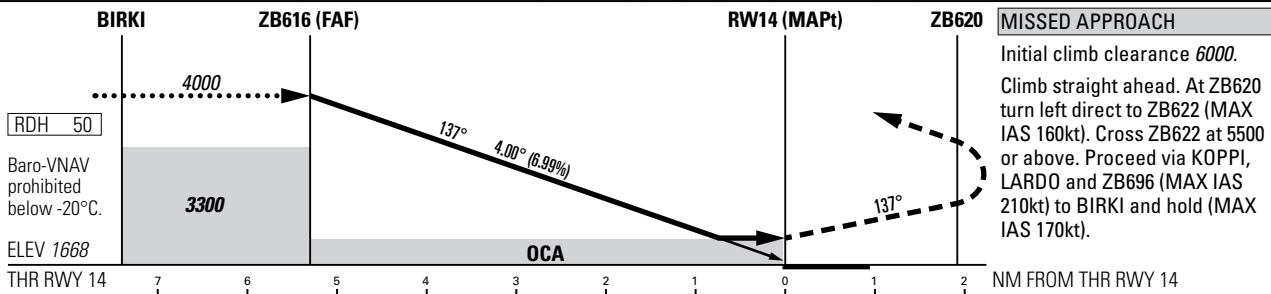


ATIS	125.130	-	EGNOS
APP	127.325	-	CH 89938
TWR	121.030	119.700	E14A



**CAUTION:** Part of the procedure is leading through Airspace Class E at or below 5500 when leaving CTR Bern (inbound to ZB622) until KOPPI. VFR traffic without radio communication and without Transponder must be expected.

**BIRKI HLDG**  
INBD 137° (140.0°T);  
1min, WD MAX 5.0<sup>1)</sup> NM;  
MAX IAS 170kt;  
4000 - FL 110



Missed APCH climb gradient requirement	STRAIGHT-IN APPROACH <sup>2)</sup>		
	OCA(H) LPV CAT I		
	A	B	C
2.5%	2704 (1036)	2720 (1052)	2734 (1066)
4.0% up to 3500	2361 (693)	2378 (710)	2391 (723)
6.4% up to 3300	2136 (468)	2153 (485)	2166 (498)
	DA(H) LPV		
6.4% up to 3300	2168 (500)		
	OCA(H) LNAV		
2.5%	3050 (1382)	3080 (1412)	3100 (1432)
4.0% up to 3600	2740 (1072)	2780 (1112)	2820 (1152)
5.7% up to 3600	2460 (792)	2490 (822)	2510 (842)
	OCA(H) LNAV/VNAV		
2.5%	2800 (1132)	2817 (1149)	2853 (1185)
4.0% up to 3600	2450 (782)	2466 (798)	2512 (844)
5.5% up to 3600	2212 (544)	2228 (560)	2256 (588)

RWY14 DIST	5.4	5.0	4.0
recommended CROSSING ALT	4000	3842	3417
recommended CROSSING HGT	2332	2174	1749

ROD	GS kt	90	110	130	150
	FT/MIN	637	779	921	1062

**CAUTION**  
- GS >140kt resulting ROD will be >1000ft/min.  
- Non-standard APCH angle.

**REMARK**  
- OBST limitation and restriction according to non-instrument RWY criteria.  
- From 0.8 NM before THR 14 Visual Segment Surface (VSS) penetrated by trees up to 1890ft AMSL.

**NOTE**  
<sup>1)</sup> WD MAX 5.0 NM applicable below 5000 only.  
<sup>2)</sup> For TRG APCH: applicable DA(H) or MDA(H) 3000ft (1332ft)..

COR: completely revised (WEF 19MAR2026)

Input data

Operation Type	0
SBAS Provider	1 (EGNOS)
Airport Identifier	LSZB
Runway	14
Runway Letter	0 (None)
Approach Performance Designator	0
Route Indicator	
Reference Path Data Selector	0
Reference Path Identifier	E14A
LTP/FTP Latitude	465504.5820N
LTP/FTP Longitude	0072932.9760E
LTP/FTP Ellipsoidal Height (metres)	557.3
FPAP Latitude	465426.5880N
Delta FPAP Latitude (seconds)	-37.9940
FPAP Longitude	0073019.3120E
Delta FPAP Longitude (seconds)	46.3360
Threshold Crossing Height	50.0
TCH Units Selector	0 (feet)
Glidepath Angle (degrees)	4.00
Course Width (metres)	105.00
Length Offset (metres)	0
HAL (metres)	40.0
VAL (metres)	35.0

Output data

Data Block	10 02 1A 13 0C 0E 00 00 01 34 31 05 0C 8F 22 14 60 26 37 03 C5 29 2C D7 FE 00 6A 01 F4 01 90 01 64 00 C8 AF E7 84 78 21
Calculated CRC Value	E7847821

Required Additional Data

ICAO Code	LS
LTP/FTP Orthometric Height (metres)	508.3