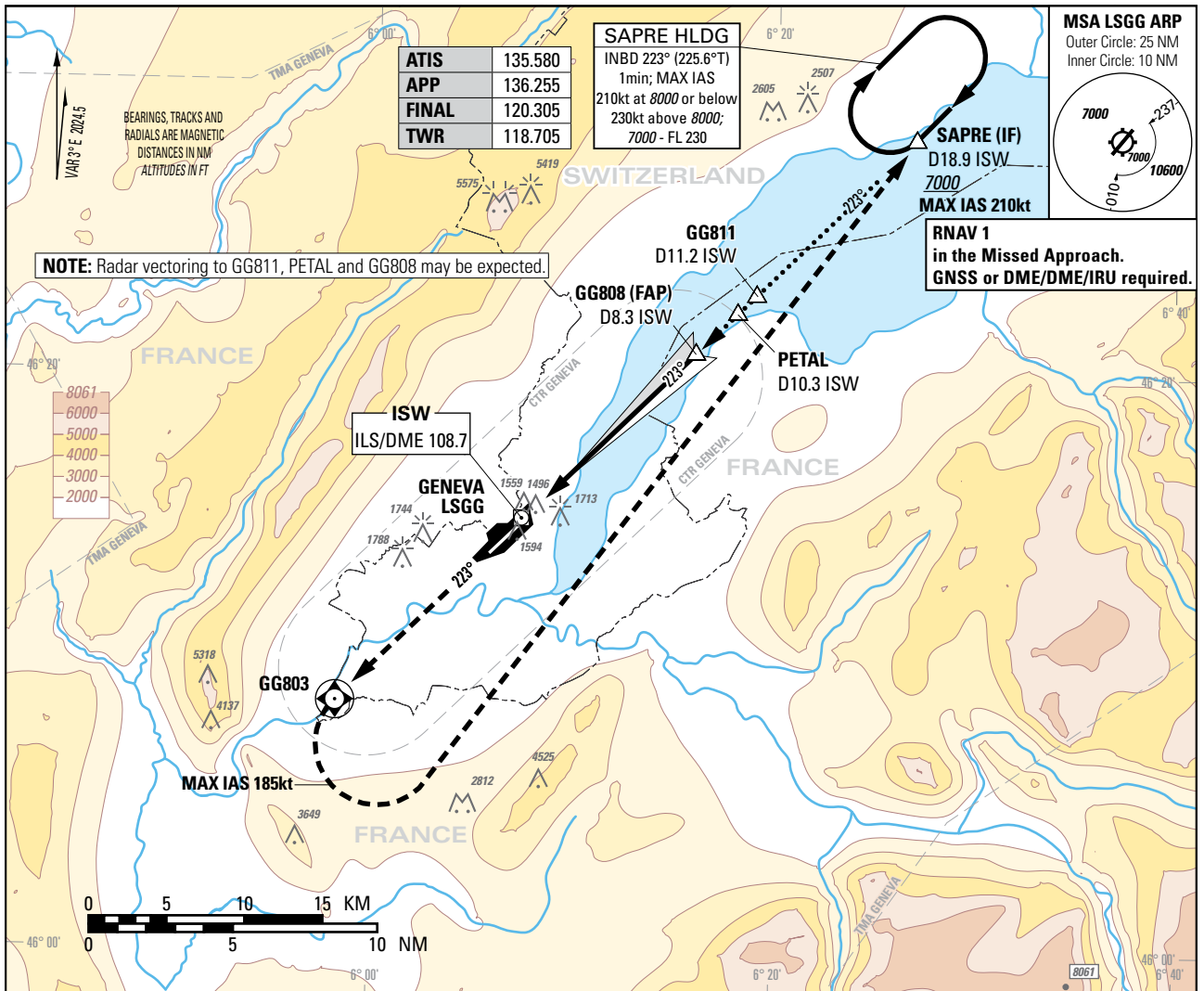


Instrument Approach Chart  
(IAC) - ICAO

AD ELEV 1411ft

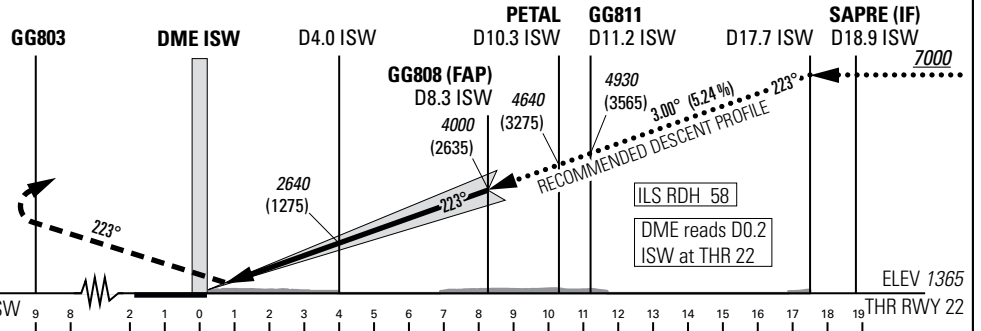
TRANSITION LEVEL by ATC  
TRANSITION ALTITUDE 7000

GENEVA (LSGG)  
ILS RWY 22  
CAT II & CAT III



**MISSED APPROACH**

Initial climb clearance 7000.  
Climb on track 223° to GG803  
then turn left and proceed direct  
to SAPRE (MAX IAS 185kt during  
turn).  
In case of RNAV Failure:  
Inform ATC, climb straight ahead  
to 7000. Expect RADAR vectors.  
MNM Climb Gradient 5.7% to  
7000.



OBSTACLE CLEARANCE ALTITUDE (HEIGHT) <sup>1)</sup>					
Missed APCH climb gradient requirement		A	B	C	D
CAT I	pressure altimeter 2.5%	2420 (1055)	2430 (1065)	2440 (1075)	2450 (1085)
CAT I	pressure altimeter	1530 (165)	1538 (173)	1548 (183)	1560 (195)
CAT II	radio altimeter 4.2% to 4800	1432 (67)	1438 (73)	1449 (84)	1465 (100)
	radio altimeter and autopilot	1427 (62)	1436 (71)	1447 (82)	1464 (99)
DECISION ALTITUDE (HEIGHT) <sup>1)</sup>					
CAT I	pressure <sup>2)</sup> altimeter	1565 (200)			
	radio altimeter and autopilot <sup>2)</sup>	1465 (100)			
Circling <sup>3) 4)</sup>		2100 (689)	2150 (739)	2400 (989)	

DIST DME ISW	2	4	6	8	8.3	10	12	14	16
recommended CROSSING ALT	2000	2640	3280	3910	4000	4550	5190	5820	6460

ROD	GS kt	90	110	130	150
	FT/MIN	478	584	690	796

**NOTE**

<sup>1)</sup> Above THR elevation 1365ft.  
<sup>2)</sup> Radio altimeter reading at CAT I DH 216ft, at CAT II DH 108ft, for lower operating minima (DH and RVR) PPR FOCA.  
<sup>3)</sup> Above aerodrome ELEV 1411ft, circling on request of ATC under special conditions and north of RWY only, speed (MAX IAS 180kt) and radius for category D as for category C aircraft.  
<sup>4)</sup> Circling must remain inside CTR at all times.

COR: TWR FREQ (WEF 19MAR2026)

THIS PAGE INTENTIONALLY LEFT BLANK