

VISUAL APPROACH CHART - ICAO

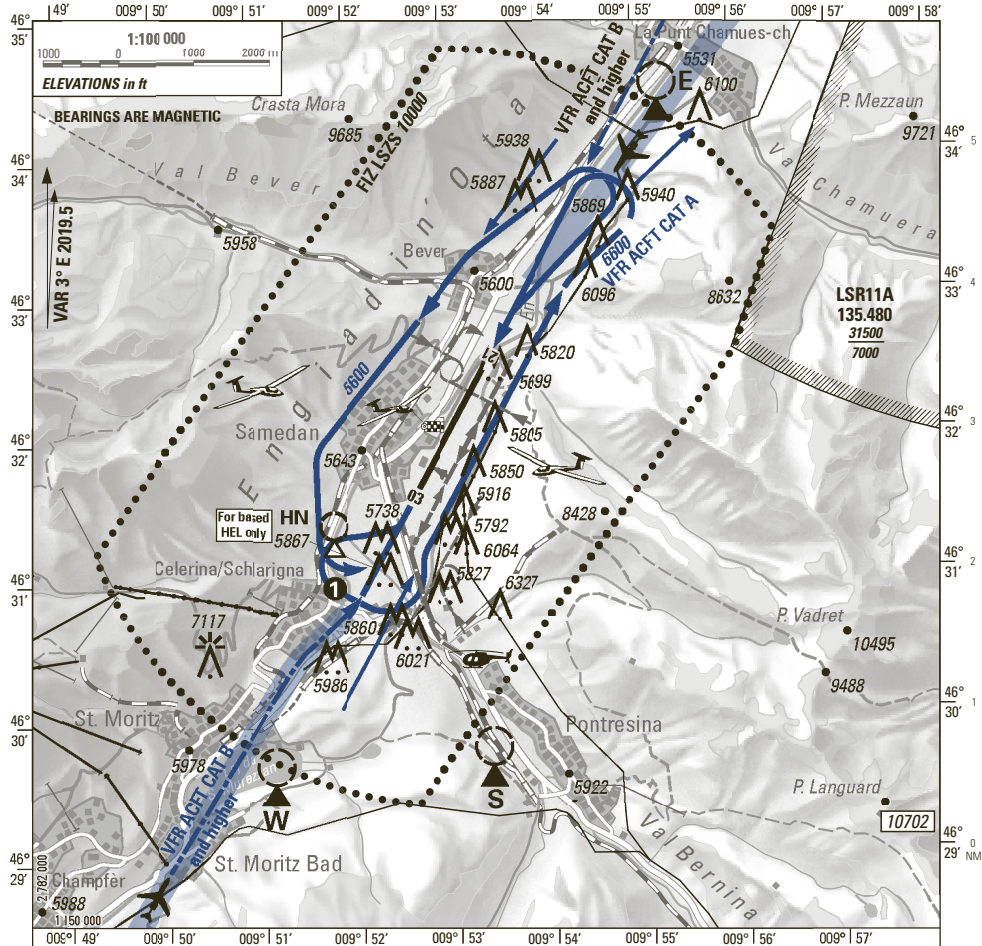
MOUNTAINOUS AREA

SAMEDAN (LSZS)

RWY 03/21

ATIS	136.600 HO
AFIS	135.325 HO
DELIVERY	121.880 HX

ELEV 5602 ft (1708 m)



CTN: AD LSZS: Familiarization mandatory.



CTN: REP HN: for based HEL only

MNT Samedan ATIS (confirm ATIS designator)

— Straight-in approach for VFR ACFT CAT B and higher



CTN: IFR APCH AREA

■ Noise sensitive areas



① TKOF RWY 21 DEP via ALBULA / ZERNEZ
CTN: Expect strong Maloja winds



HEL Routes via Whiskey, Sierra and Echo MNM 6000, crossing of RWY-axis via FATO in accordance with AFIS only, Helipad advised by AFIS



Announce FLT ALT



Intense Glider ACT MAY-OCT
GLD FREQ: A/A 123.680



CTN:

→ VFR RAC 4-5 Mountain Flights

Altitudes in ft; Heights in ft

COR: FREQ LSR11A, OBST, basemap, editorial (W/E 13/MAR2026)

© swisstopo

THIS PAGE INTENTIONALLY LEFT BLANK