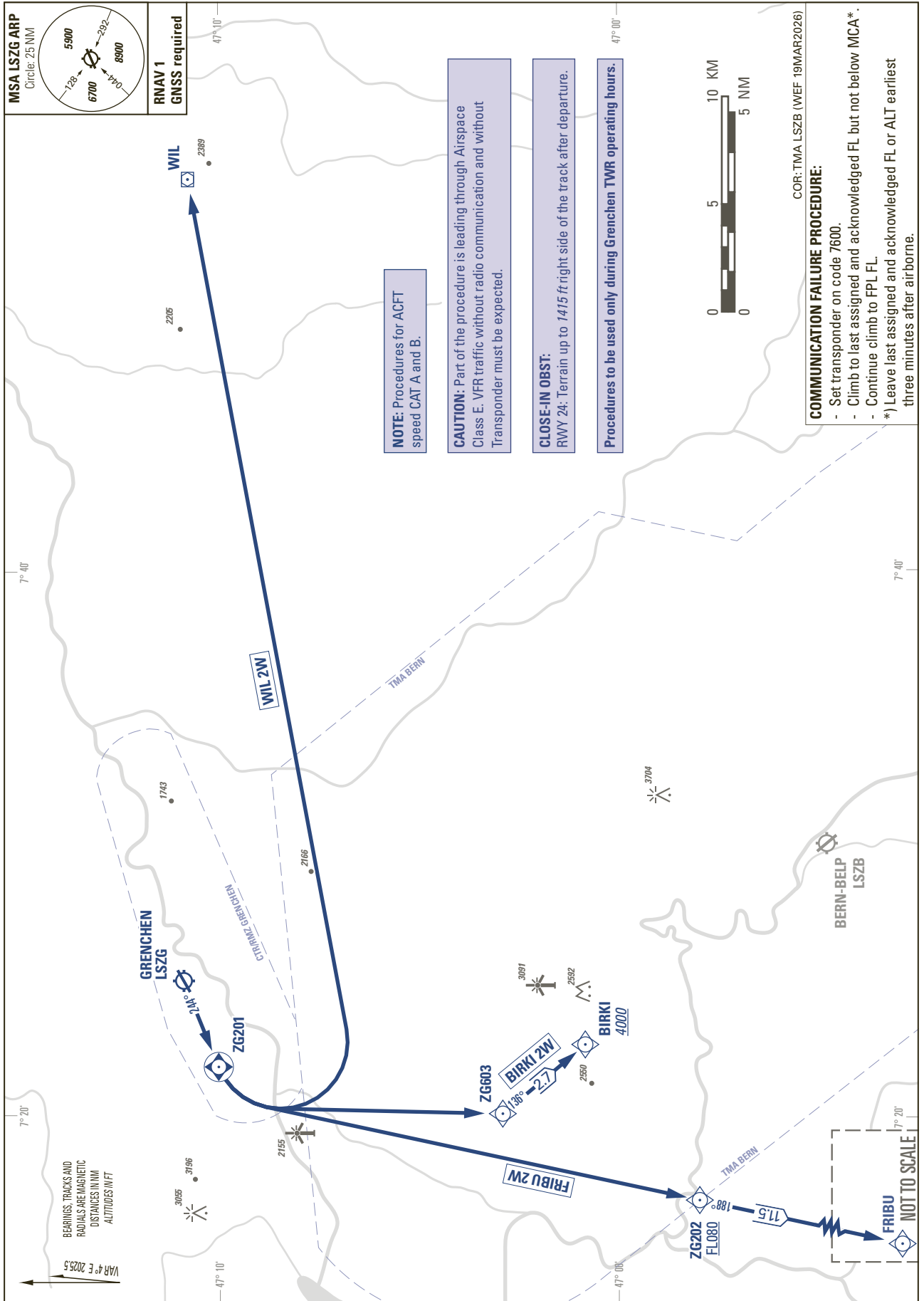


STANDARD DEPARTURE CHART -
INSTRUMENT (SID) - ICAO

TRANSITION LEVEL by ATC
TRANSITION ALTITUDE 6000

GRENCHEM (LSZG)
RNAV RWY 24

BIRKI 2W FRIBU 2W WIL 2W



MSA LSZG ARP
Circle: 25 NM

RNAV 1
GNSS required

NOTE: Procedures for ACFT speed CAT A and B.

CAUTION: Part of the procedure is leading through Airspace Class E. VFR traffic without radio communication and without Transponder must be expected.

CLOSE-IN OBST:
RWY 24: Terrain up to 1415 ft right side of the track after departure.

Procedures to be used only during Grencchen TWR operating hours.

COR: TMA LSZG (WEF 19/MAR/2026)

COMMUNICATION FAILURE PROCEDURE:

- Set transponder on code 7600.
- Climb to last assigned and acknowledged FL but not below MCA*.
- Continue climb to FPL FL.

*) Leave last assigned and acknowledged FL or ALT earliest three minutes after airborne.

VAR 4° E 2025.5
BEARINGS, TRACKS AND RADIALS ARE MAGNETIC
DISTANCES IN NM
ALTITUDES IN FT

THIS PAGE INTENTIONALLY LEFT BLANK