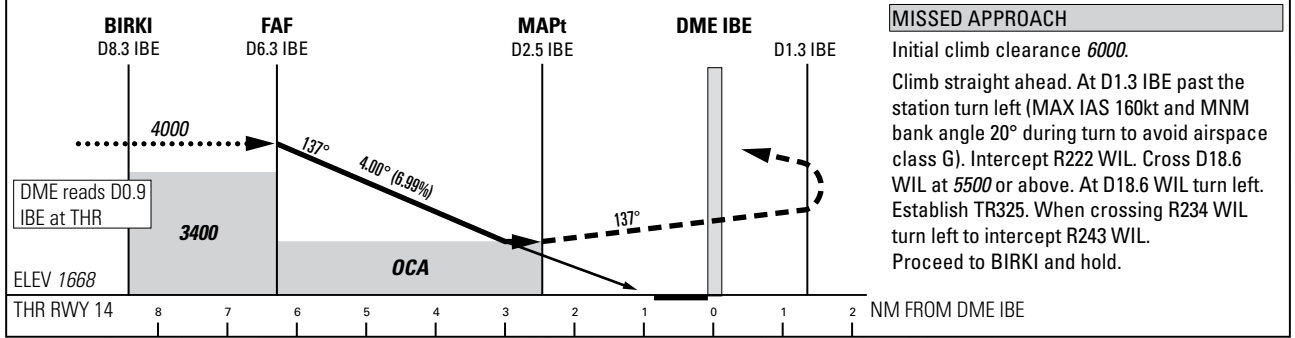
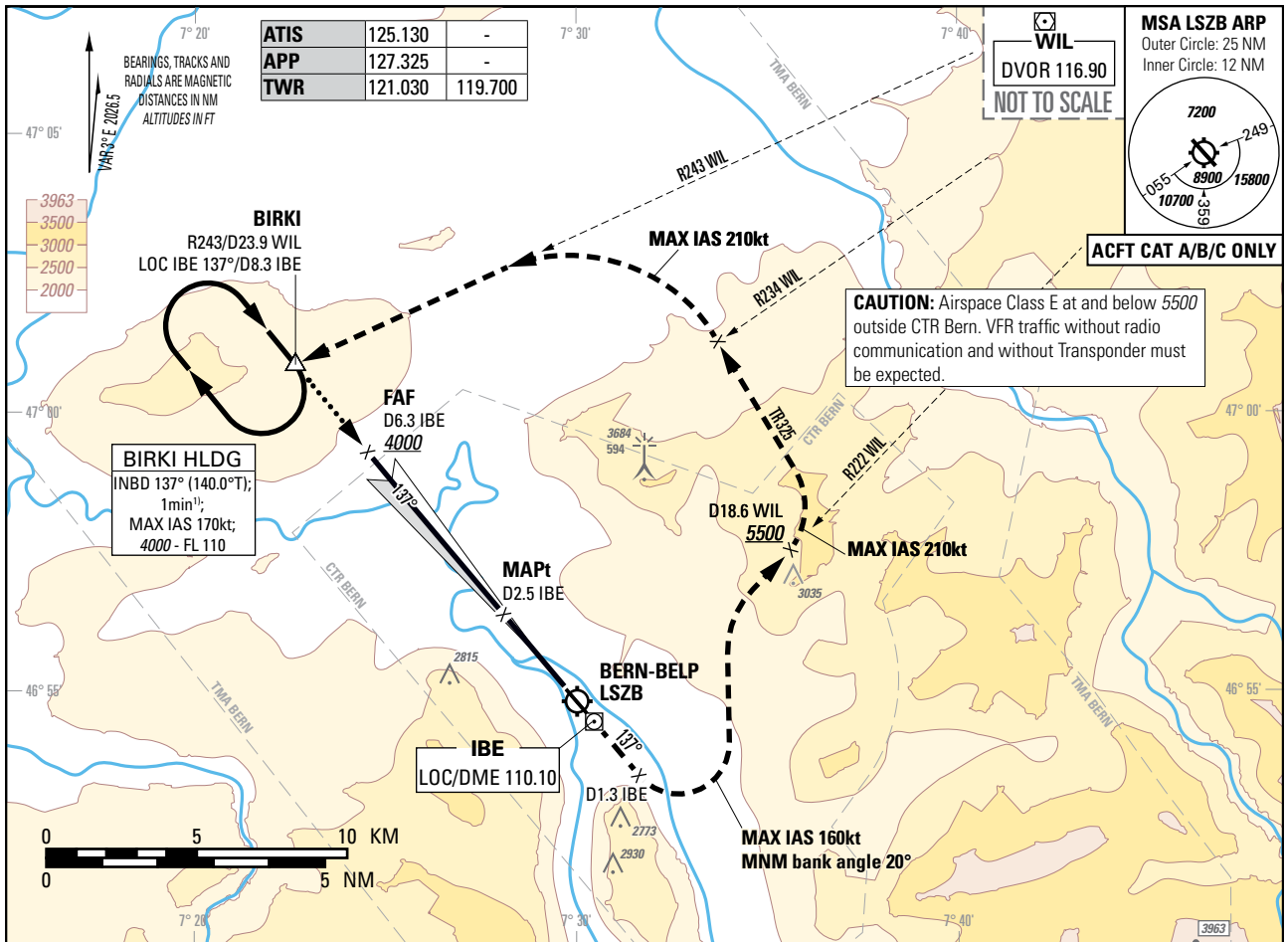


Instrument Approach Chart
(IAC) - ICAO

AD ELEV 1675ft

TRANSITION LEVEL by ATC
TRANSITION ALTITUDE 6000

BERN-BELP (LSZB)
LOC RWY 14



Missed APCH climb gradient requirement	STRAIGHT-IN APPROACH ²⁾		
	OCA(H)		
	A	B	C
2.5%	2810 (1142)		
3.8% up to 3600	2400 (732)		

ROD	GS kt	90	110	130	150
	FT/MIN	637	779	921	1062

DME IBE DIST	6.3	6.0	5.0	4.0
recommended CROSSING ALT	4000	3880	3455	3030
recommended CROSSING HGT	2332	2212	1787	1362

CAUTION
- Non-standard APCH angle.

REMARK
- OBST limitation and restriction according to non-instrument RWY criteria.

NOTE

¹⁾ Conventional navigation offset and parallel entries prohibited below 5000ft.
²⁾ For TRG APCH: applicable MDA(H) 3000ft (1332ft).

COR: completely revised (WEF 19MAR2026)

THIS PAGE INTENTIONALLY LEFT BLANK