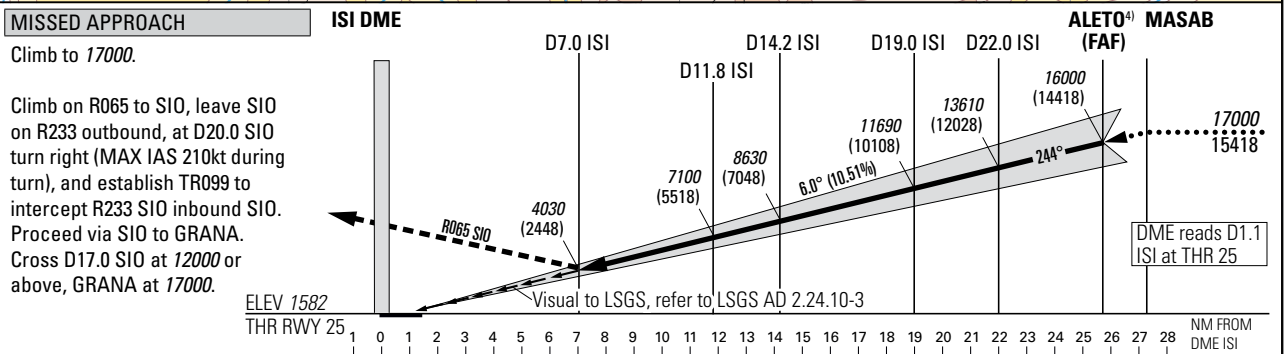
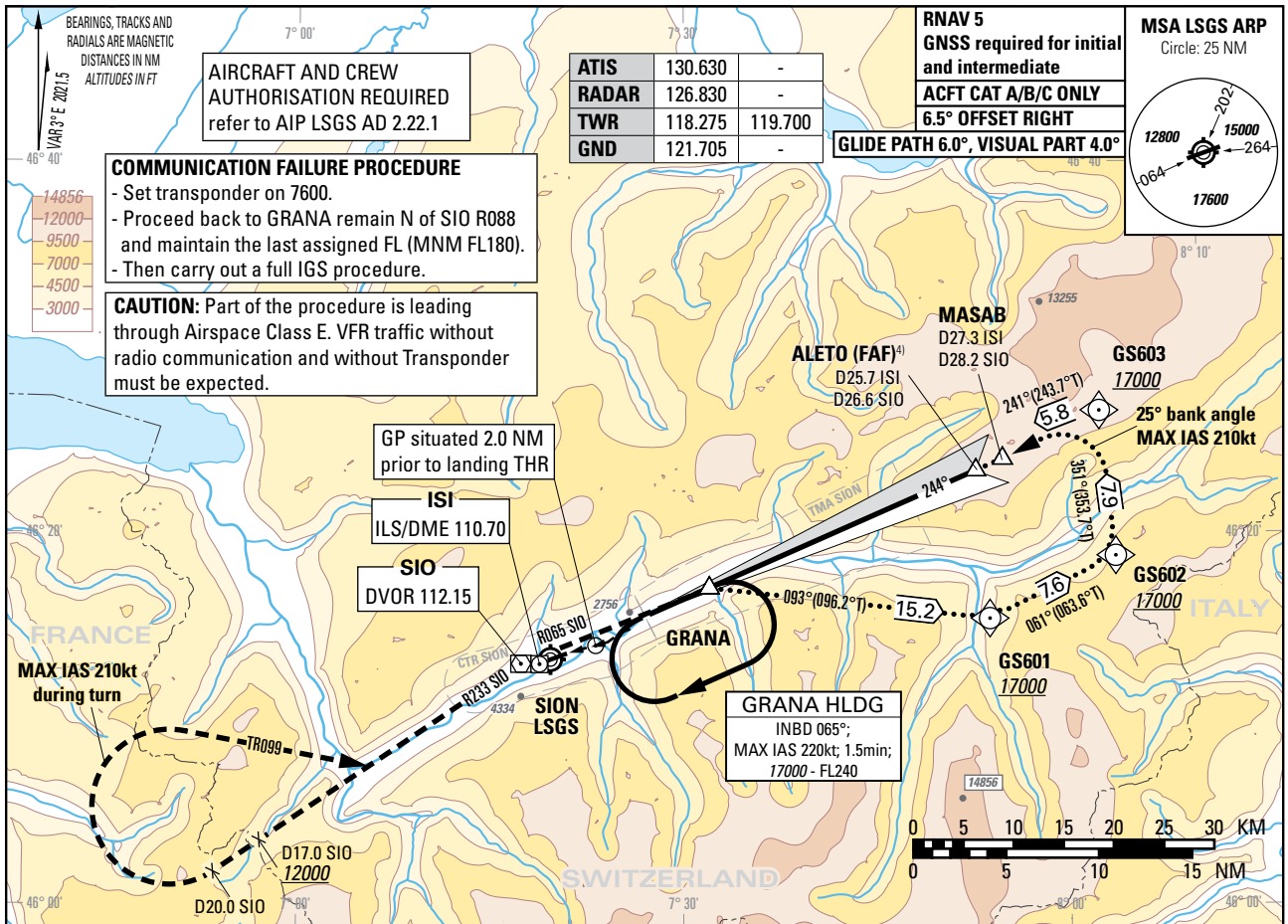


Instrument Approach Chart
(IAC) - ICAO
(IGS instruction: see LSGS AD 2.22)

AD ELEV 1582ft

TRANSITION LEVEL by ATC
TRANSITION ALTITUDE 17000

SION (LSGS)
IGS RWY 25



| Missed APCH climb gradient requirement | STRAIGHT-IN APPROACH | | | VIS m |
|---|----------------------------|-------------|----------------|-------|
| | A | B | C | |
| | DECISION ALTITUDE (HEIGHT) | | | |
| 2.5% | 6520 (4940) ¹⁾ | | | 5000 |
| 3.0% | 6080 (4500) ¹⁾ | | | |
| 3.5% | 5650 (4070) ¹⁾ | | | |
| 4.0% | 5220 (3640) ¹⁾ | | | |
| 4.5% | 4780 (3200) ¹⁾ | | | |
| 4.9% | 4490 (2910) ¹⁾ | | | |
| Circling north of AD only ^{1) 2) 3)} | 4490 (2910) | 5040 (3460) | not authorized | 5000 |

| | 7 | 8 | 9 | 10 | 12 | 14 | 16 |
|----------|-------|-------|-------|-------|-------|-------|-------|
| DIST ISI | 7 | 8 | 9 | 10 | 12 | 14 | 16 |
| DIST THR | 5.9 | 6.9 | 7.9 | 8.9 | 10.9 | 12.9 | 14.9 |
| ALT FT | 4030 | 4670 | 5310 | 5950 | 7220 | 8500 | 9780 |
| DIST ISI | 18 | 20 | 22 | 24 | 25 | 25.7 | 27.3 |
| DIST THR | 16.9 | 18.9 | 20.9 | 22.9 | 23.9 | 24.6 | 26.2 |
| ALT FT | 11050 | 12330 | 13610 | 14890 | 15530 | 16000 | 17000 |

REMARK
 - APCH PROHIBITED IF GP U/S.
 - Table for temperature deviation from ISA. See LSGS AD 2.23.2.
 - Final APCH offset 6.5° from RCL.
 - If unable to comply with MAX HLDG speed, inform ATC.

CAUTION
 - This is not a standard APCH angle.

NOTE
¹⁾ Special training required. ²⁾ Night circling prohibited. ⁴⁾ At ALETO, GP 15970.
³⁾ ACFT categories A, B with speed limit of 125kt.

COR: RADAR FREQ, CTR (WEF 19MAR2026)

THIS PAGE INTENTIONALLY LEFT BLANK