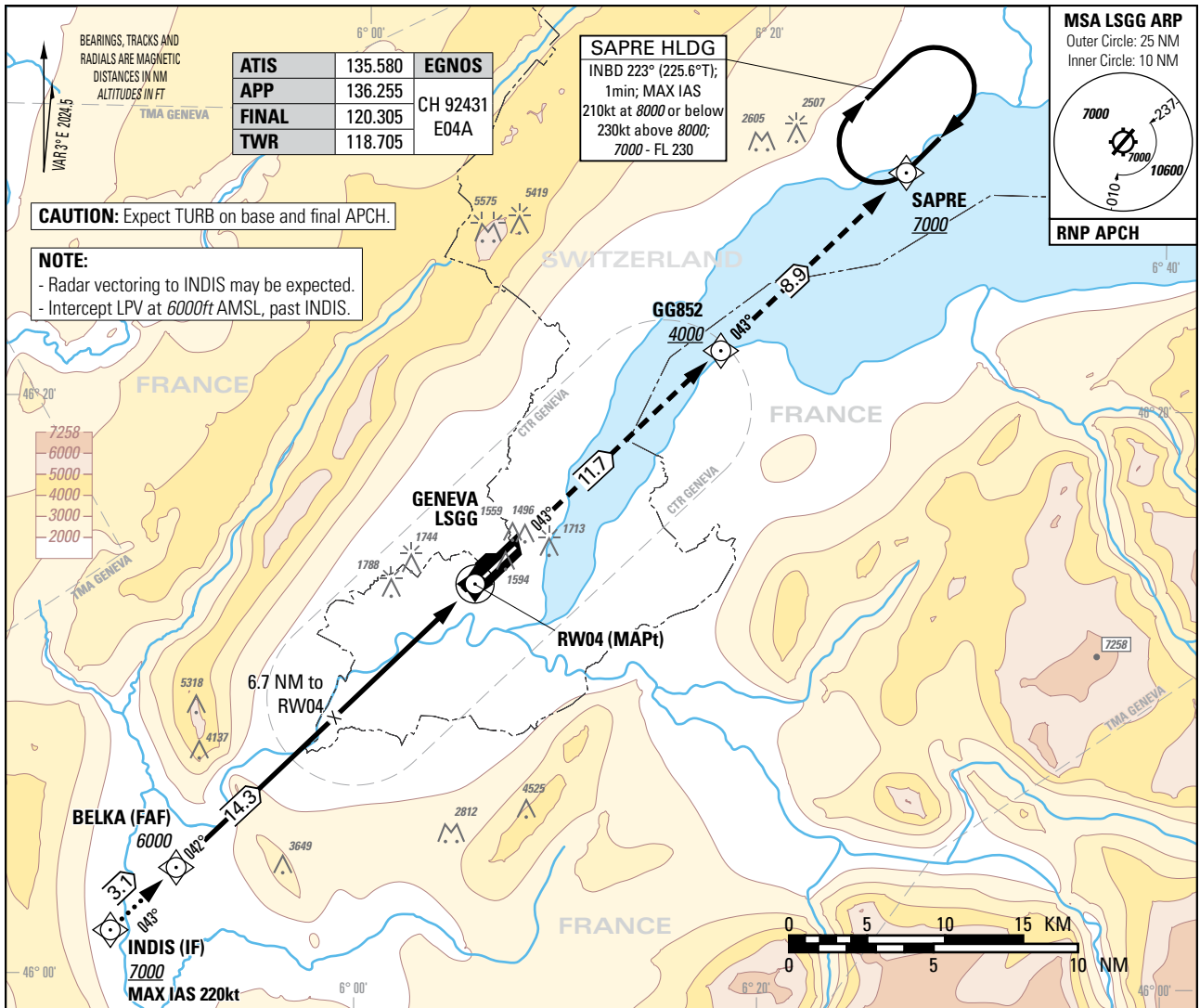


Instrument Approach Chart
(IAC) - ICAO

AD ELEV 1411ft

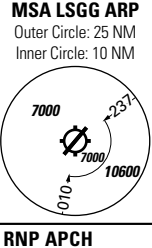
TRANSITION LEVEL by ATC
TRANSITION ALTITUDE 7000

GENEVA (LSGG)
RNP RWY 04



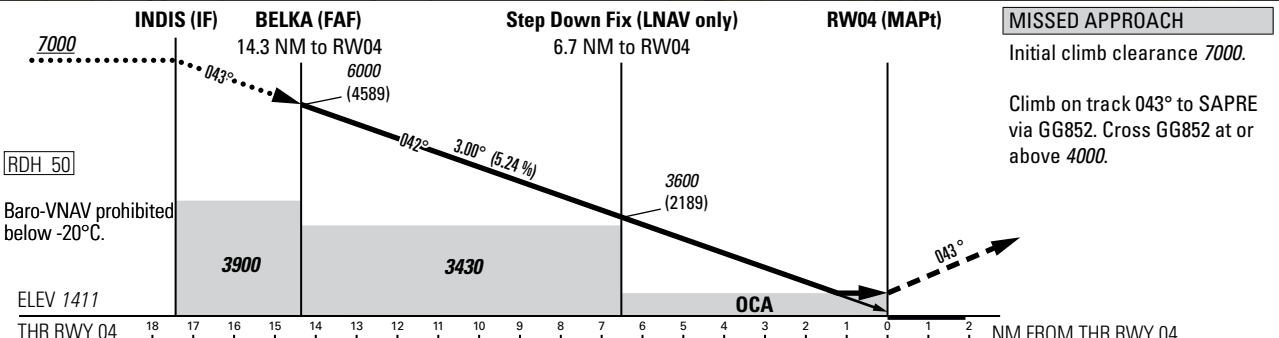
ATIS	135.580	EGNOS	
APP	136.255	CH 92431	
FINAL	120.305	E04A	
TWR	118.705		

SAPRE HLDG
INBD 223° (225.6°T);
1min; MAX IAS
210kt at 8000 or below
230kt above 8000;
7000 - FL 230



CAUTION: Expect TURB on base and final APCH.

NOTE:
- Radar vectoring to INDIS may be expected.
- Intercept LPV at 6000ft AMSL, past INDIS.



Missed APCH climb gradient requirement	STRAIGHT-IN APPROACH				DIST RWY 04	17.4	16	14.3	12	10	8	6.7	6	4	2
	A	B	C	D		recommended crossing ALTITUDE (HEIGHT)	7000 (5589)	6560 (5149)	6000 (4598)	5290 (3879)	4650 (3239)	4010 (2599)	3600 (2189)	3380 (1969)	2740 (1329)
2.5%	OCA(H) LPV CAT I				ROD	GS kt		90	110	130	150				
	DA(H) LPV CAT I					FT/MIN		478	584	690	796				
	OCA(H) LNAV/VNAV														
	OCA(H) LNAV														
	1860 (449)														
Circling ^(1) 2)	2100 (689)	2150 (739)	2400 (989)												

CAUTION
0.5 NM before THR 04 Visual Segment Surface (VSS) penetrated by trees up to 1520ft AMSL.

NOTE
1) Circling on request of ATC under special conditions and north of RWY only, speed (MAX IAS 180kt) and radius for category D as for category C aircraft.
2) Circling must remain inside CTR at all times.

COR:TWR FREQ (WEF 19MAR2026)

Input data

Operation Type	0
SBAS Provider	1
Airport Identifier	LSGG
Runway	04
Runway Direction	0
Approach Performance Designator	0
Route Indicator	
Reference Path Data Selector	0
Reference Path Identifier	E04A
LTP/FTP Latitude	461340.2340N
LTP/FTP Longitude	0060538.2400E
LTP/FTP Ellipsoidal Height (metres)	479.9
FPAP Latitude	461505.8430N
Delta FPAP Latitude (seconds)	85.6090
FPAP Longitude	0060743.8945E
Delta FPAP Longitude (seconds)	125.6545
Threshold Crossing Height	50.0
TCH Units Selector	0
Glidepath Angle (degrees)	3.00
Course Width (metres)	105.00
Length Offset (metres)	144
HAL (metres)	40.0
VAL (metres)	35.0

Output data

Data Block	10 07 07 13 0C 04 00 00 01 34 30 05 14 BE D6 13 80 80 9D 02 BF 26 D2 9C 02 AD D5 03 F4 01 2C 01 64 12 C8 AF 03 D3 C8 33
Calculated CRC Value	03D3C833

Required Additional Data

ICAO Code	LS
LTP/FTP Orthometric Height (metres)	430.1
FPAP Orthometric Height (metres)	