

VISUAL APPROACH CHART -  
ICAO

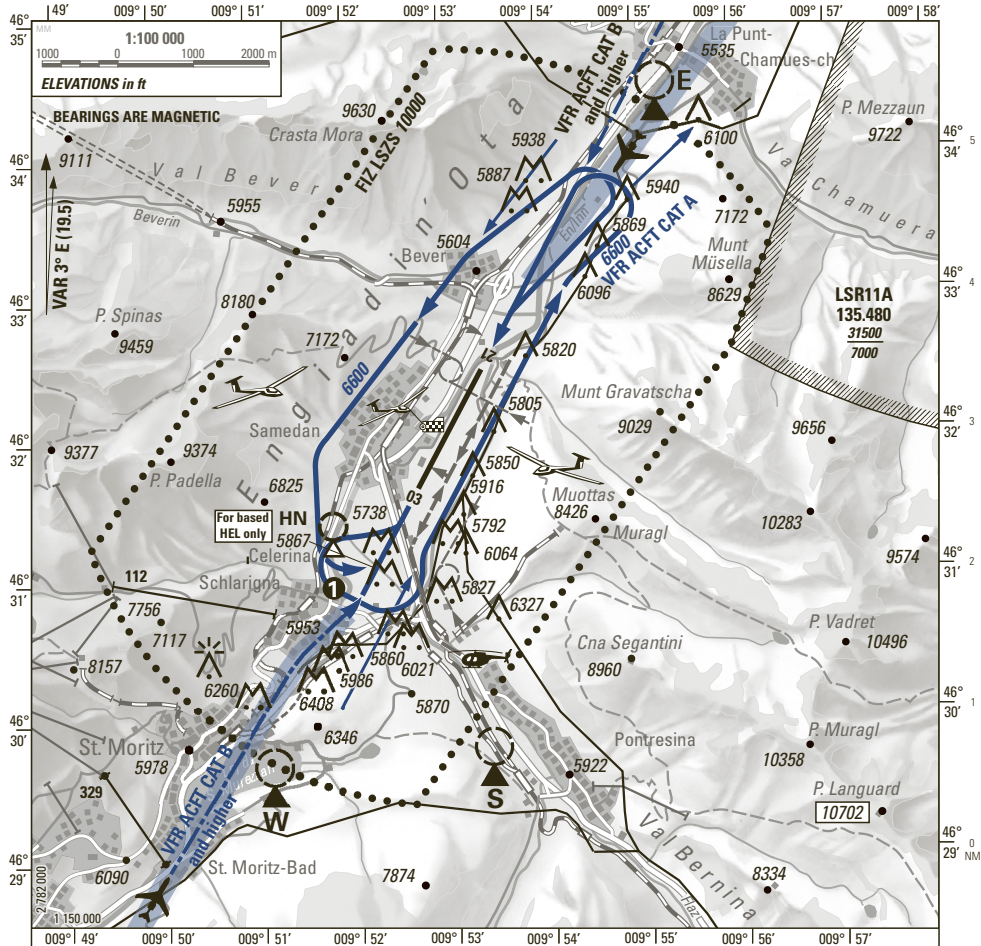
**MOUNTAINOUS AREA**

**SAMEDAN (LSZS)**

RWY 03/21

ATIS	136.600 HO
AFIS	135.325 HO
DELIVERY	121.880 HX

ELEV 5602 ft (1708 m)



CTN: AD LSZS: Familiarization mandatory.

CTN: REP HN: for based HEL only

**MNT Samedan ATIS** (confirm ATIS designator)

Straight-in approach for VFR ACFT CAT B and higher CTN: IFR APCH AREA

Noise sensitive areas

**1** TKOF RWY 21 DEP via ALBULA / ZERNEZ  
CTN: Expect strong Maloja winds

HEL Routes via Whiskey, Sierra and Echo MNM 6000, crossing of RWY-axis via FATO in accordance with AFIS only, Helipad advised by AFIS

Announce FLT ALT

Intense Glider ACT MAY-OCT  
GLD FREQ: A/A 123.680

CTN:

VFR RAC 4-5 Mountain Flights

Altitudes in ft; Heights in ft

COR: FREQ LSR11A (W/E 19/MAR/2026)

© swisstopo

THIS PAGE INTENTIONALLY LEFT BLANK