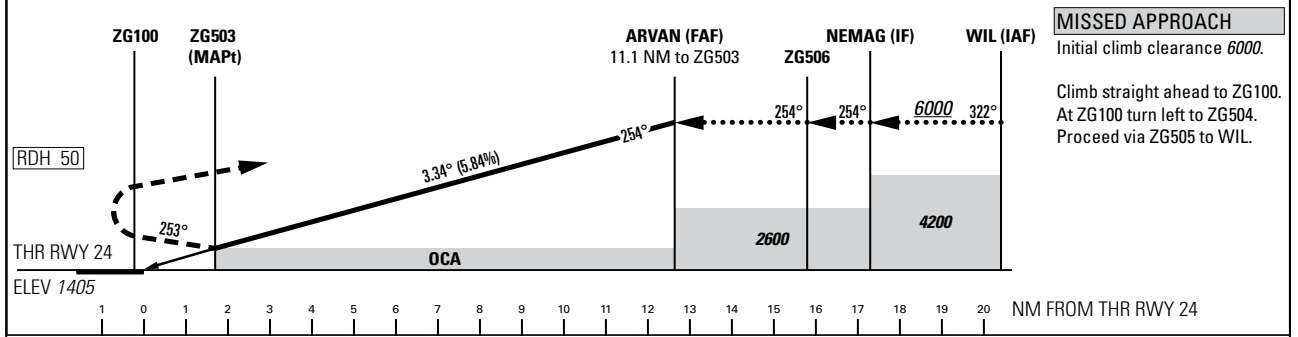
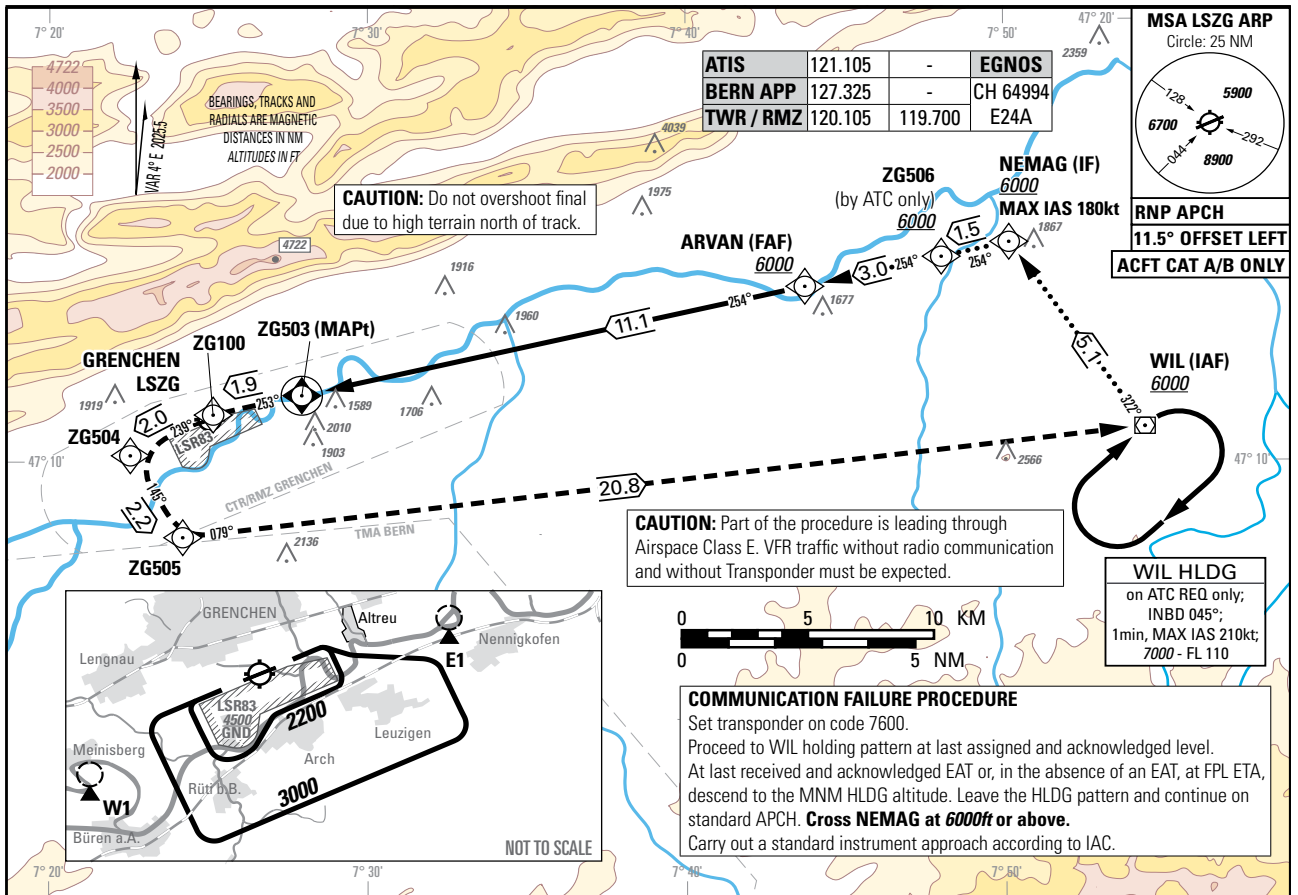


Instrument Approach Chart
(IAC) - ICAO

AD ELEV 1411ft

TRANSITION LEVEL by ATC
TRANSITION ALTITUDE 6000

GRENCHEN LSZG
RNP RWY 24



Missed APCH climb gradient requirement	STRAIGHT-IN APPROACH ¹⁾	
	A	B
To Altitude	OCA(H) LPV	
2.5%	2180 (775)	2190 (785)
8.1%	2400	1915 (510)
	OCA(H) LNAV	
2.5%	2540 (1135)	
6%	2900	2080 (675)
CIRCLING ²⁾		
	A	B
OCA	2270	2320
VIS	1900m	2800m

DIST ZG503	1	2	3	4	5	6	7	8	9	10	11	11.1
	DIST FTP24	2.74	3.74	4.74	5.74	6.74	7.74	8.74	9.74	10.74	11.74	12.74
recommended crossing	Altitude	2430	2790	3140	3500	3850	4200	4560	4910	5270	5620	5980
	Height	1025	1385	1735	2095	2445	2795	3155	3505	3865	4215	4575

NOTE

¹⁾ Noise abatement:
- Do not turn onto final before reaching 1.2 NM to ZG100 (do not overfly Altreu village).
Manoeuvring takes place below 500ft AGL

²⁾ Circling:
- No circlings north of RWY 06/24.
- Avoid overflying villages.
- Whenever possible, circling ALT 3000ft on outer downwind, circling shall remain inside CTR limits.

CAUTION
- Do not enter LSR83 when active (ATIS).

ROD	GS kt	90	110	130	150
	FT/MIN	532	650	768	887

COR: chart completely revised (WEF 19MAR2026)

Input data

Operation Type	0
SBAS Provider	1 (EGNOS)
Airport Identifier	LSZG
Runway	24
Runway Letter	0 (None)
Approach Performance Designator	0
Route Indicator	
Reference Path Data Selector	0
Reference Path Identifier	E24A
LTP/FTP Latitude	471102.0700N
LTP/FTP Longitude	0072522.7560E
LTP/FTP Ellipsoidal Height (metres)	477.2
FPAP Latitude	471049.7370N
Delta FPAP Latitude (seconds)	-12.3330
FPAP Longitude	0072404.3100E
Delta FPAP Longitude (seconds)	-78.4460
Threshold Crossing Height	50.0
TCH Units Selector	0 (feet)
Glidepath Angle (degrees)	3.34
Course Width (metres)	105.00
Length Offset (metres)	0
HAL (metres)	40.0
VAL (metres)	35.0

Output data

Data Block	10 07 1A 13 0C 18 00 00 01 34 32 05 6C C7 3F 14 88 83 2F 03 A4 26 A6 9F FF 24 9B FD F4 01 4E 01 64 00 C8 AF C9 12 BA 87
Calculated CRC Value	C912BA87

Required Additional Data

ICAO Code	LS
LTP/FTP Orthometric Height (metres)	428.3