

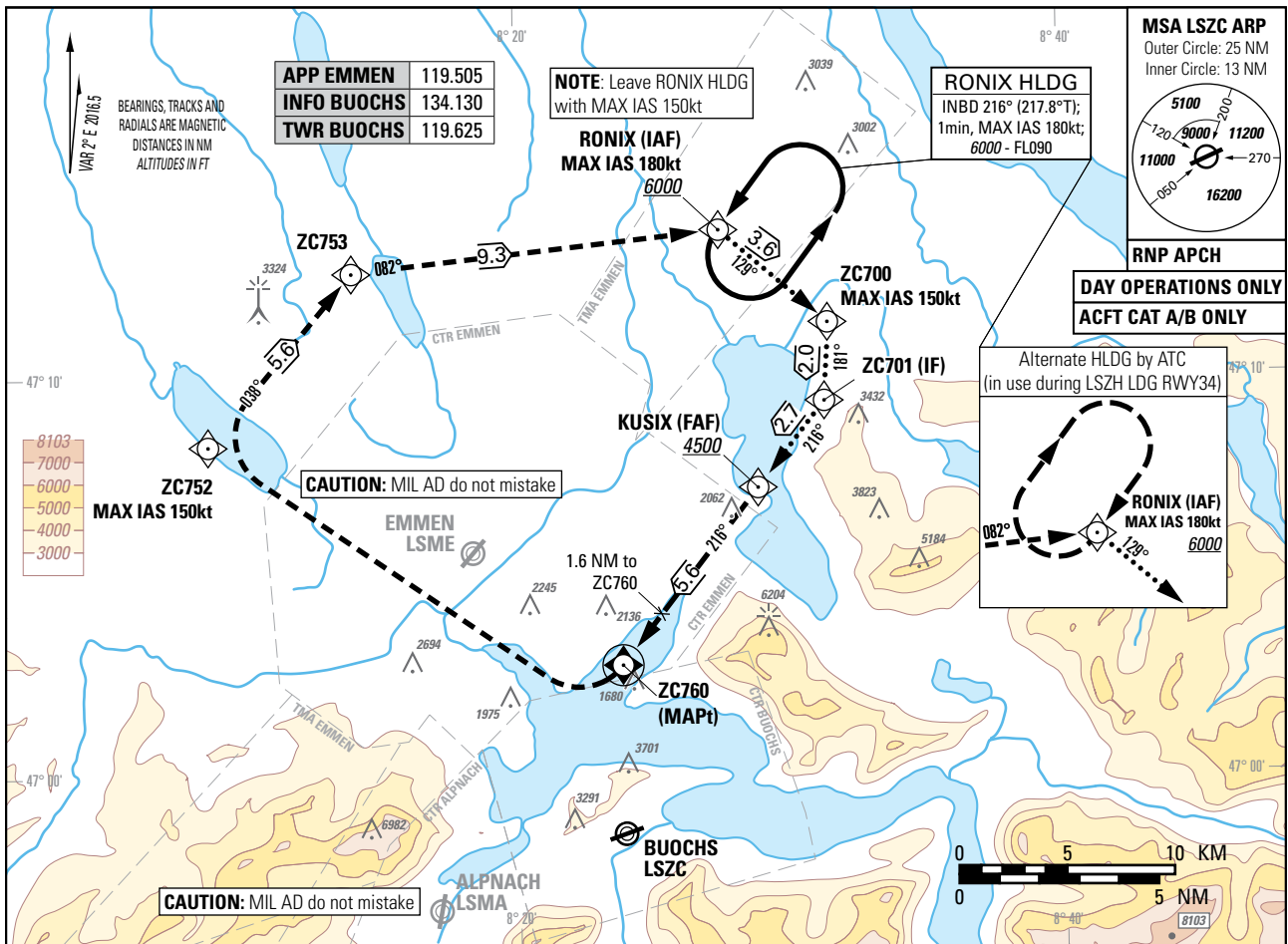
Instrument Approach Chart
(IAC) - ICAO

AD ELEV 1475ft

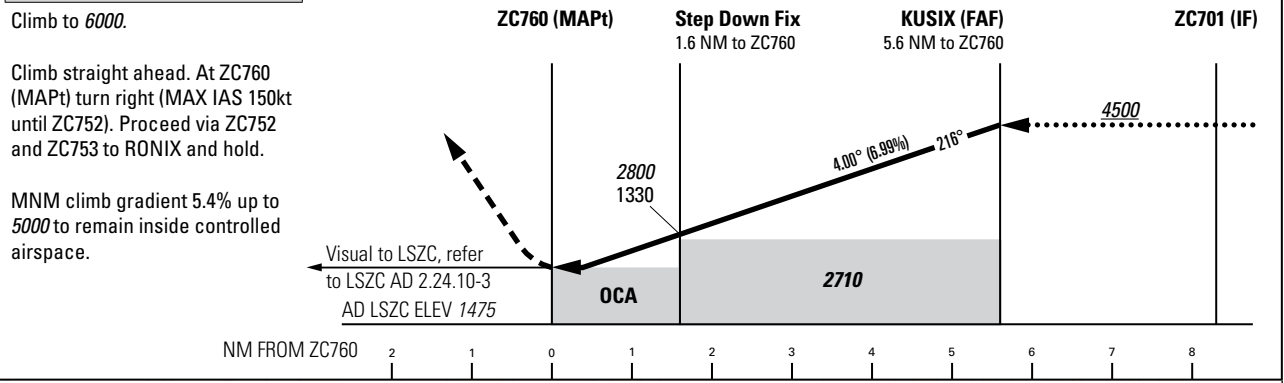
TRANSITION LEVEL by ATC
TRANSITION ALTITUDE 7000

BUOCHS (LSZC)
RNP-A

PROCEDURE LIMITED TO PILOTS OPERATING FOR PILATUS AIRCRAFT LTD



MISSED APPROACH



Missed APCH climb gradient	OCA(H) ¹⁾ LNAV	
	A	B
2.5%	2350 (880)	
5.4% to 2400	2280 (810)	
	MDA(H) ¹⁾	
	3500 (2030) ²⁾	
2.5%	2350 (880) ³⁾	
5.4% to 2400	2280 (810) ³⁾	

CAUTION
This is not a standard APCH angle.

REMARK
- VIS APCH following ZC760 according LSZC AD 2.24.10-3.

NOTE
¹⁾ OCH/MDH above AD ELEV.
²⁾ CTR EMMEN 2 not active.
³⁾ CTR EMMEN 2 active.

Dist to ZC760	1	2	3	4	5
	ALT	2550	2970	3400	3820
ROD	GS kt	90	110	130	
	FT/MIN	637	779	921	

COR: FREQ APP Emmen (WEF 19MAR2026)

THIS PAGE INTENTIONALLY LEFT BLANK