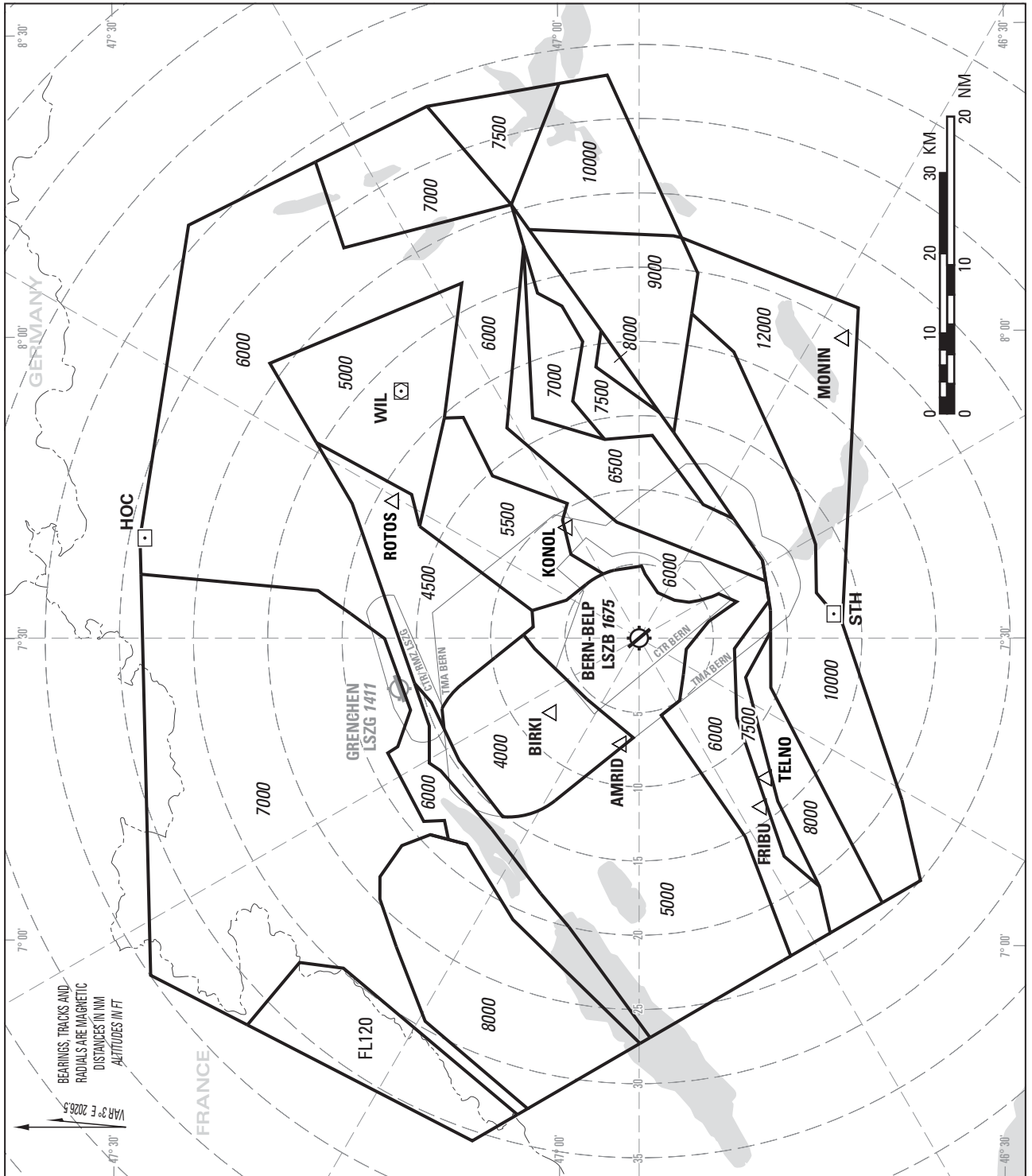


MINIMUM VECTORING ALTITUDE CHART (ADTEMPERATURES -4°C AND ABOVE)



NOTES:

The minimum vectoring altitude chart shows the lowest altitude for the approach / departure sectors of LSZB which may be assigned to an IFR flight under radar vectoring.

The chart may only be used for cross-checking of altitudes assigned while under radar vectoring.

Altitudes: LSZB QNH.

Transition ALT: 6000

Minimum altitudes over Swiss territory are calculated according ICAO norms (PANS-ATM Doc 4444 & PANS-OPS Doc 8168).

Minimum altitudes are protected for low temperatures to minus 4 degrees celsius (LSZB temperature).

Sectors indicated all 30°, distances indicated all 5 NM, based on ARP LSZB.

COR: MAG VAR, airspace LSZB, WPT, DME STH (WEEF 19/MAR2026)

THIS PAGE INTENTIONALLY LEFT BLANK