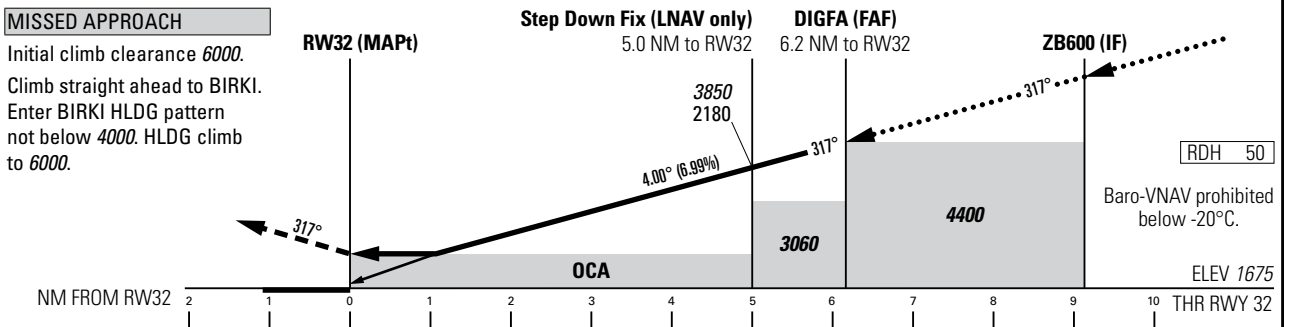
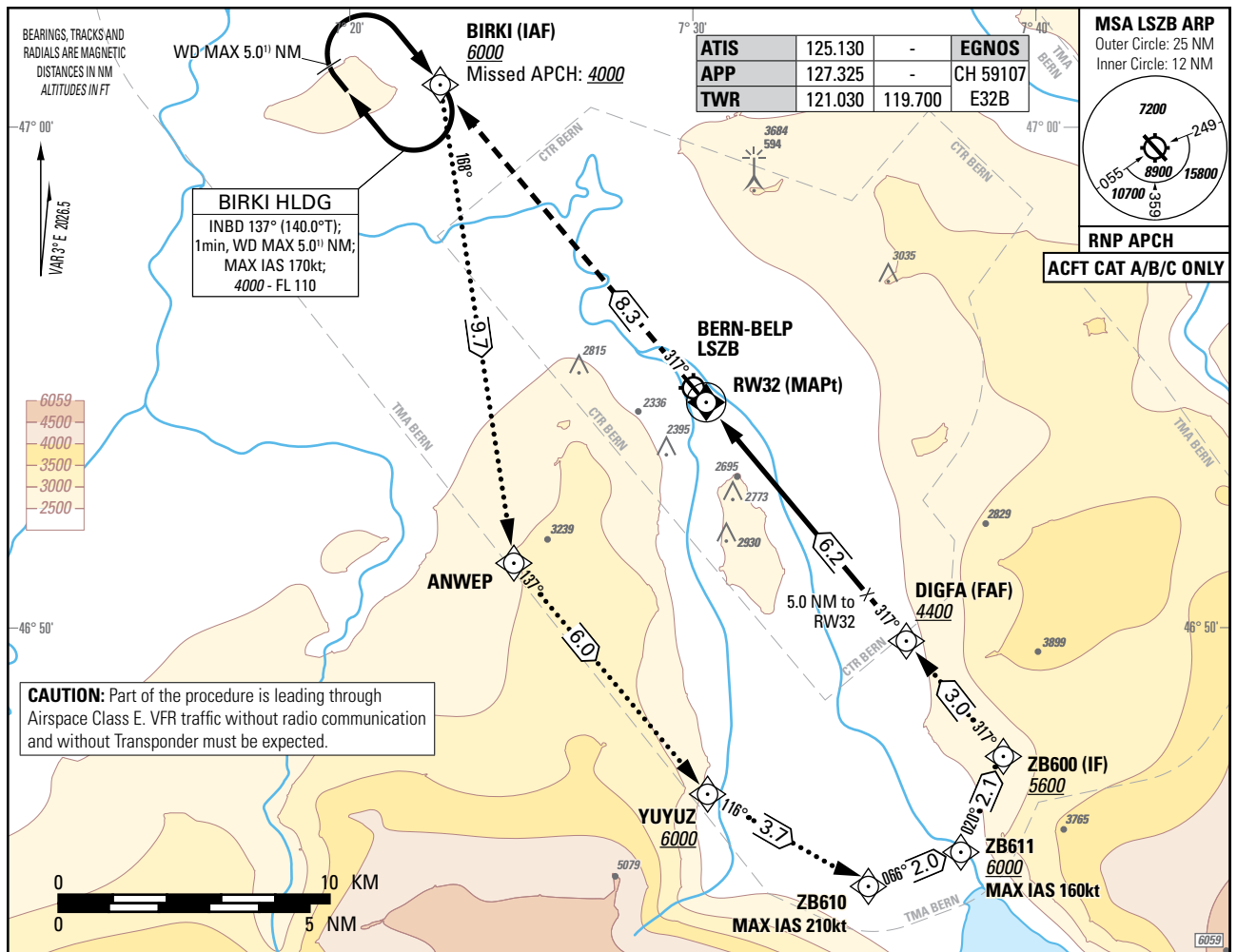


Instrument Approach Chart  
(IAC) - ICAO

AD ELEV 1675ft

TRANSITION LEVEL by ATC  
TRANSITION ALTITUDE 6000

BERN-BELP LSZB  
RNP RWY 32



Missed APCH climb gradient requirement	STRAIGHT-IN APPROACH		
	A	B	C
	OCA(H) LNAV		
2.5%	3000 (1330)		
	OCA(H) LNAV/VNAV		
2.5%	2941 (1266)	2949 (1274)	2956 (1281)
	OCA(H) LPV CAT I		
2.5%	2975 (1300)	2991 (1316)	3004 (1329)

DIST RWY32	2.0	3.0	4.0	5.0	6.0	7.0	8.0
recommended CROSSING ALT	2580	3000	3430	3850	4280	4700	5130
recommended CROSSING HGT	900	1330	1750	2180	2600	3030	3450

ROD	GS kt	90	110	130	140
	FT/MIN	637	779	920	991

**CAUTION**  
 - Descending Intermediate APCH segment: Do not capture VPA from above.  
 - GS >140kt resulting ROD will be >1000ft/min.  
 - Non-standard APCH angle.

**REMARK**  
 - Familiarisation with APCH is strongly recommended and available on the homepage of the aerodrome operator.  
 - The descent from ZB600 is calculated at a constant 4° to THR RWY 32.  
 - OBST limitation and restriction according to non-instrument RWY criteria.

**NOTE**  
<sup>1)</sup> WD MAX 5.0 NM applicable below 5000 only.

COR: new chart (WEF 19MAR2026)

Input data

Operation Type	0
SBAS Provider	1 (EGNOS)
Airport Identifier	LSZB
Runway	32
Runway Letter	0 (None)
Approach Performance Designator	0
Route Indicator	Y
Reference Path Data Selector	0
Reference Path Identifier	E32B
LTP/FTP Latitude	465426.5950N
LTP/FTP Longitude	0073019.3020E
LTP/FTP Ellipsoidal Height (metres)	559.6
FPAP Latitude	465509.5755N
Delta FPAP Latitude (seconds)	42.9805
FPAP Longitude	0072926.8855E
Delta FPAP Longitude (seconds)	-52.4165
Threshold Crossing Height	50.0
TCH Units Selector	0 (feet)
Glidepath Angle (degrees)	4.00
Course Width (metres)	105.00
Length Offset (metres)	0
HAL (metres)	40.0
VAL (metres)	35.0

Output data

Data Block	10 02 1A 13 0C 20 C8 00 02 32 33 05 46 66 21 14 4C 90 38 03 DC 29 C9 4F 01 7F 66 FE F4 01 90 01 64 00 C8 AF E0 03 15 C0
Calculated CRC Value	E00315C0

Required Additional Data

ICAO Code	LS
LTP/FTP Orthometric Height (metres)	510.5