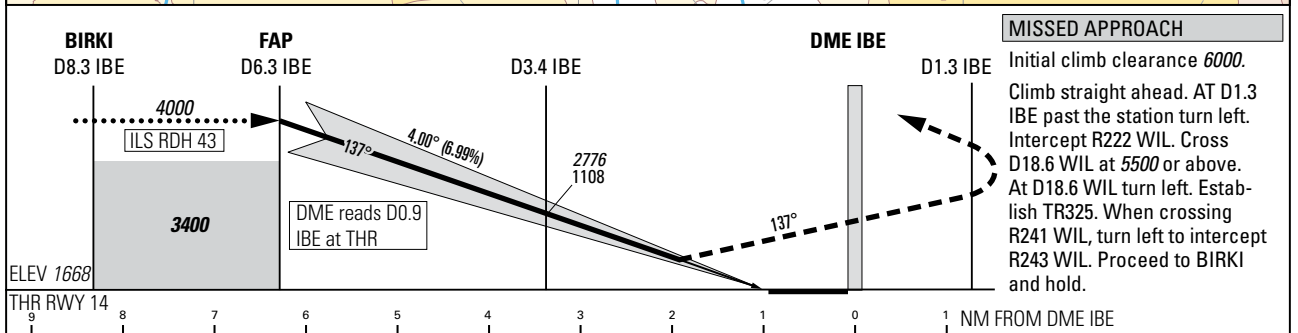
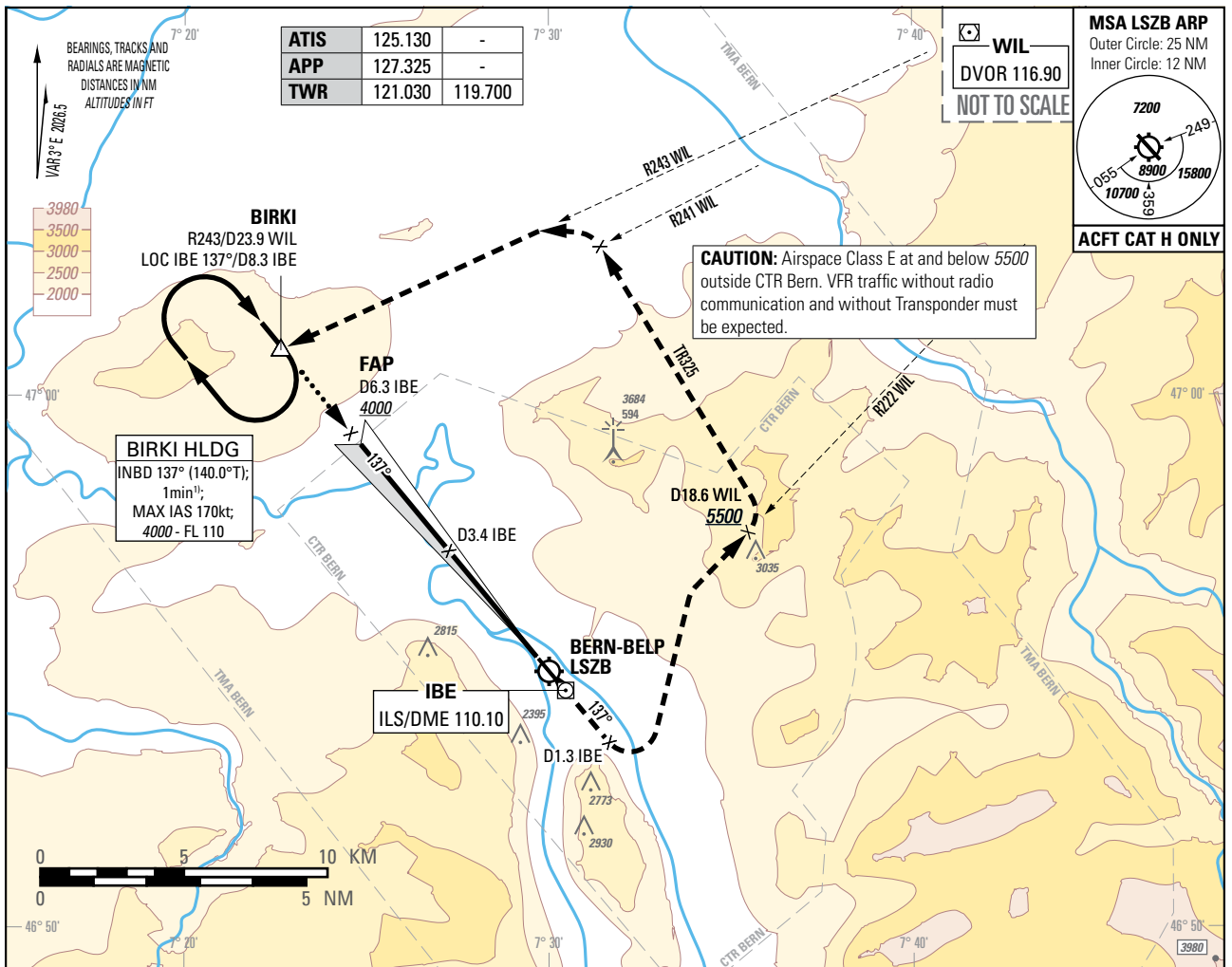


Instrument Approach Chart
(IAC) - ICAO

AD ELEV 1675ft

TRANSITION LEVEL by ATC
TRANSITION ALTITUDE 6000

BERN-BELP (LSZB)
ILS RWY 14



Missed APCH climb gradient requirement		STRAIGHT-IN APPROACH	
		OBSTACLE CLEARANCE ALTITUDE (HEIGHT)	
		H	
4.2%	pressure altimeter	2295 (627)	
5.0% up to 3000		2206 (538)	
6.1% up to 3000		2113 (445)	
		DECISION ALTITUDE (HEIGHT)	
7.0% up to 3100	pressure altimeter	2117 (449)	

DME IBE DIST	6.3	6.0	5.0	4.0	3.0
recommended CROSSING ALT	4000	3880	3455	3030	2605
recommended CROSSING HGT	2332	2212	1787	1362	937

REMARK

- Uncategorised ILS due to OBST limitation and restriction according to non-instrument RWY criteria.
- ILS signal fulfills ICAO Annex 10, CAT I specifications.

NOTE

¹⁾ Conventional navigation offset and parallel entries prohibited below 5000ft.

ROD	GS kt	70	80	90	100
	FT/MIN	496	567	637	708

COR: completely revised (WEF 19MAR2026)

THIS PAGE INTENTIONALLY LEFT BLANK