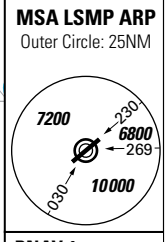
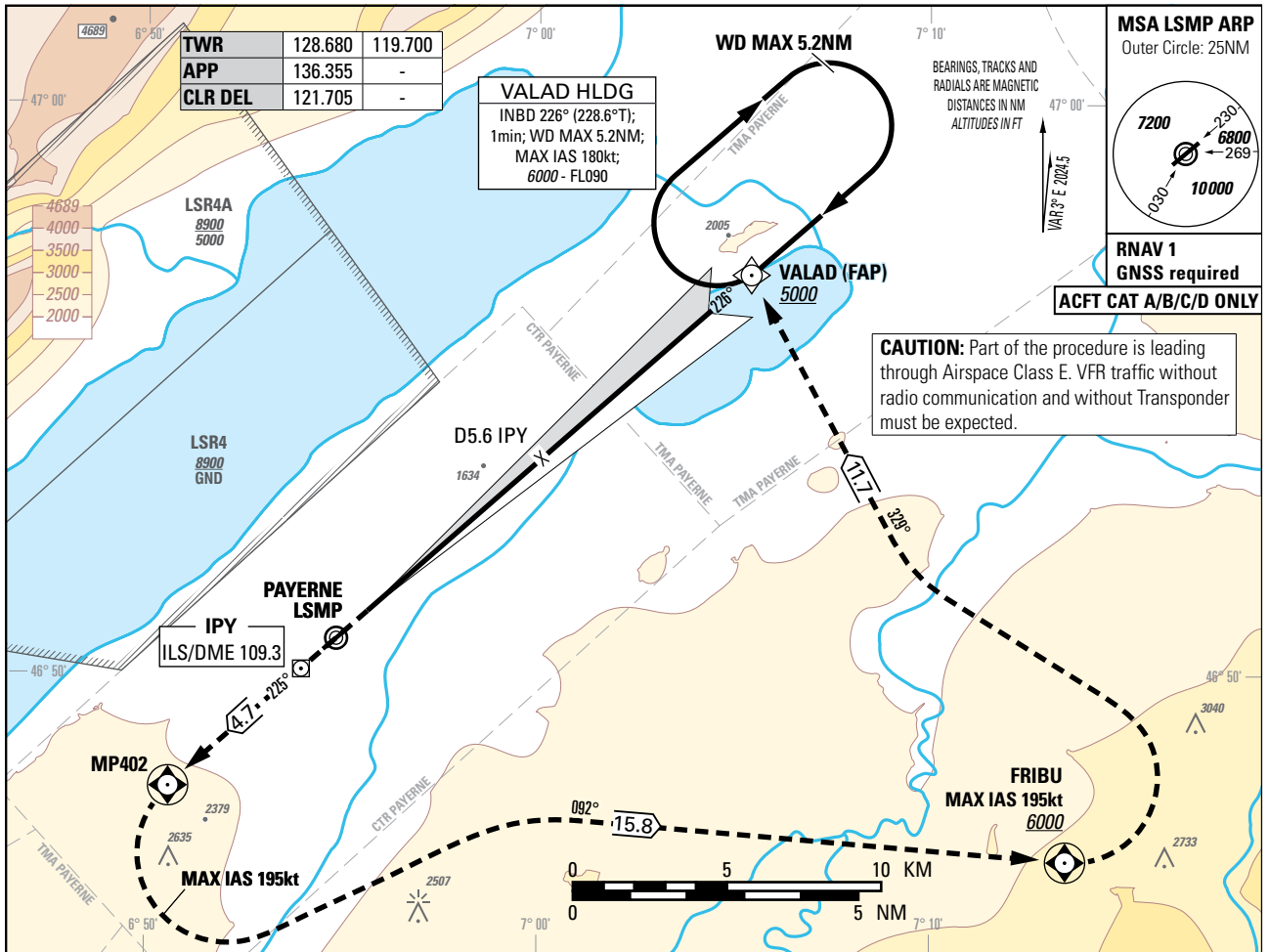


Instrument Approach Chart
(IAC) - ICAO

AD ELEV 1466ft

TRANSITION LEVEL by ATC
TRANSITION ALTITUDE 6000

PAYERNE (LSMP)
ILS RWY 23

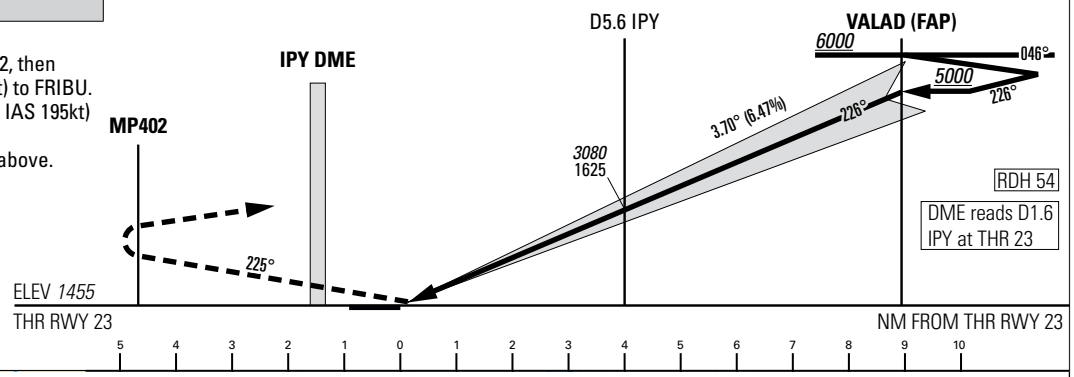


RNAV 1
GNSS required
ACFT CAT A/B/C/D ONLY

CAUTION: Part of the procedure is leading through Airspace Class E. VFR traffic without radio communication and without Transponder must be expected.

MISSED APPROACH

Climb to 6000.
Straight ahead to MP402, then turn left (MAX IAS 195kt) to FRIBU. At FRIBU turn left (MAX IAS 195kt) to VALAD. Cross FRIBU at 6000 or above.



Missed APCH climb gradient requirement	STRAIGHT-IN APPROACH			
	A	B	C	D
	OBSTACLE CLEARANCE ALTITUDE (HEIGHT)			
2.5%	2052 (597)	2065 (610)	2078 (623)	2091 (636)
4.4% to 2700	1712 (257)	1725 (270)	1738 (283)	1751 (296)
	DECISION ALTITUDE (HEIGHT)			
4.4% to 2700	1813 (358)			
CIRCLING ¹⁾	A	B	C	D
OCA(H)	2120 (654)	2460 (994)	2790 (1324)	2830 (1364)

IPY DME	4.0	5.0	6.0	7.0	8.0	9.0	10.0	10.5
recommended CROSSING ALT	2460	2850	3240	3460	4030	4420	4820	5000

NOTE
¹⁾ Circling north of RWY only. Circling must remain inside CTR at all time. Remain SE of Lake Neuchatel. MAX distance parallel of RWY for all ACFT Cat: 2NM.

CAUTION
- MAX GS 150kt in final approach to avoid ROD > 1000ft/min.
- Non-standard approach angle.

REMARK
- Uncategorized ILS APCH RWY 23 due to OBST limitation and restriction according to non-instrument RWY criteria.
- ILS23 signal fulfills ICAO Annex 10, CAT I specifications.

COR: TWR&APP FREQ (WEF 19MAR2026)

THIS PAGE INTENTIONALLY LEFT BLANK