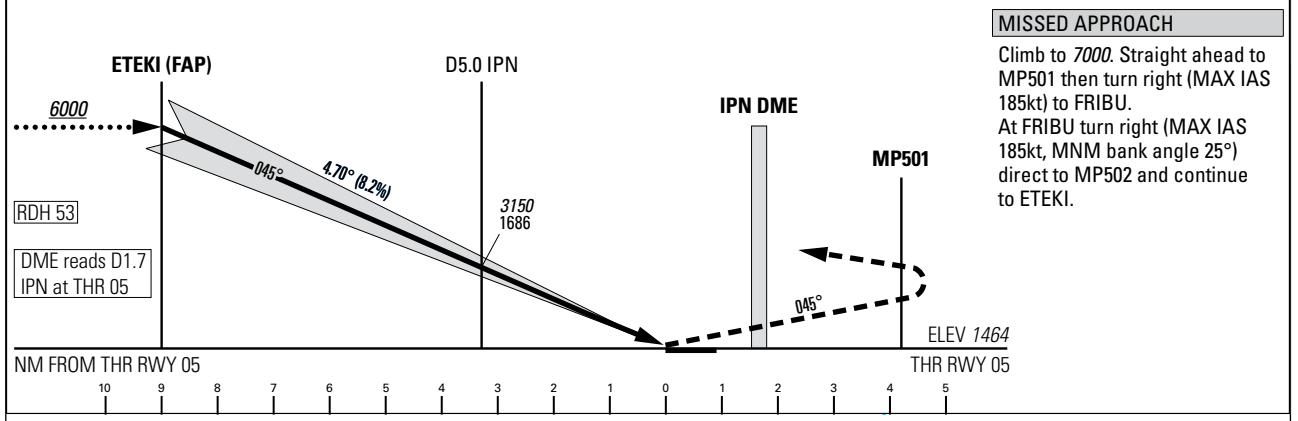
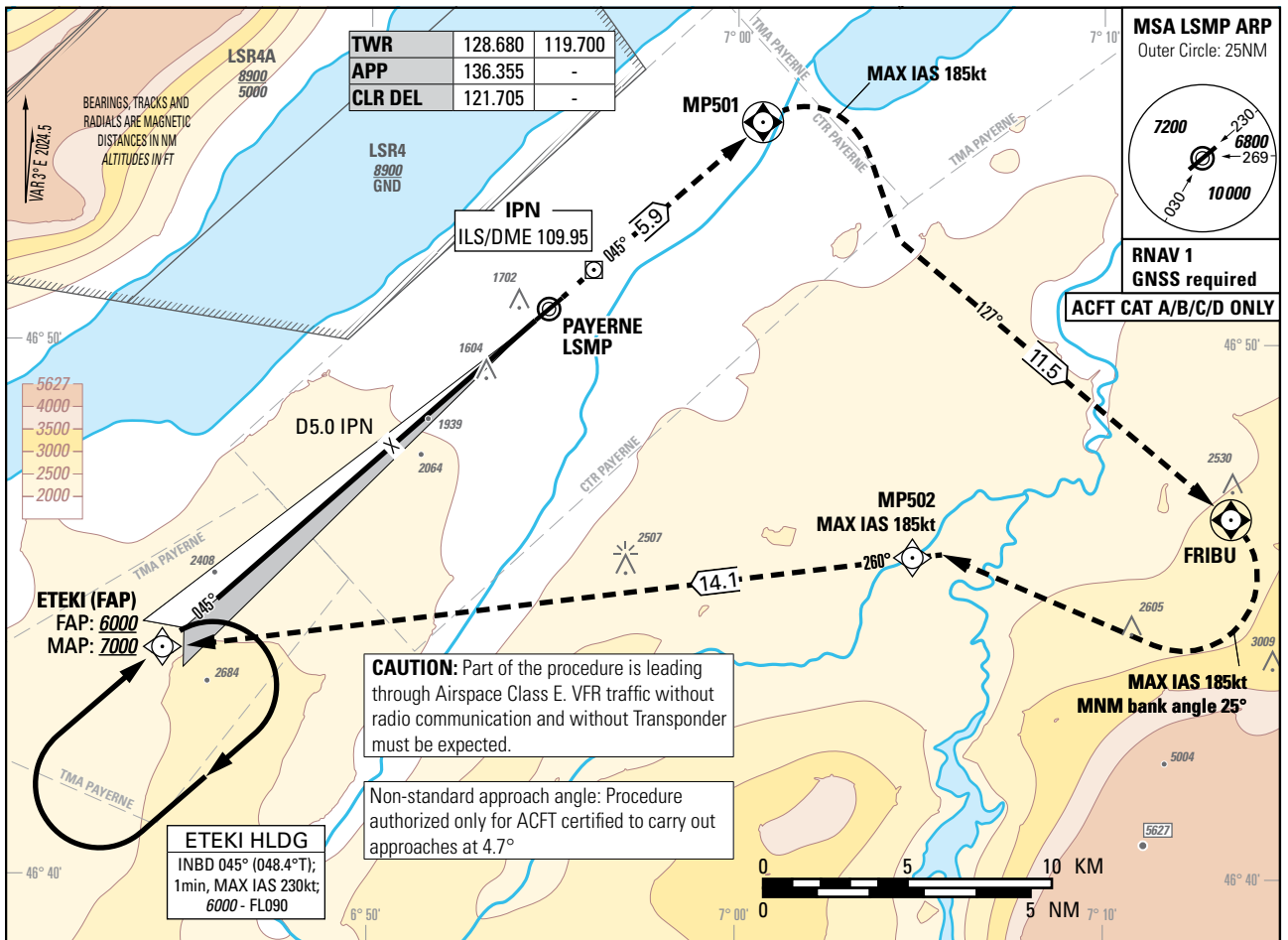


Instrument Approach Chart
(IAC) - ICAO

AD ELEV 1466ft

TRANSITION LEVEL by ATC
TRANSITION ALTITUDE 6000

PAYERNE (LSMP)
ILS RWY 05



MISSED APPROACH
Climb to 7000. Straight ahead to MP501 then turn right (MAX IAS 185kt) to FRIBU. At FRIBU turn right (MAX IAS 185kt, MNM bank angle 25°) direct to MP502 and continue to ETEKI.

Missed APCH climb gradient requirement	STRAIGHT-IN APPROACH			
	A	B	C	D
	OBSTACLE CLEARANCE ALTITUDE (HEIGHT)			
2.5%	2999 (1535)	3022 (1558)	3042 (1578)	3062 (1598)
4.1% to 5900	1730 (266)	1753 (289)	1772 (308)	1792 (328)
	DECISION ALTITUDE (HEIGHT)			
4.1% to 5900	1867 (403)			
CIRCLING ¹⁾	A	B	C	D
OCA(H)	2120 (654)	2460 (994)	2790 (1324)	2830 (1364)

IPN DME	10.7	10.0	9.0	8.0	7.0	6.0	5.0
recommended CROSSING ALT	6000	5640	5140	4640	4140	3650	3150

NOTE
¹⁾ Circling north of RWY only. Circling must remain inside CTR at all time. Remain SE of Lake Neuchatel. MAX distance parallel of RWY for all ACFT Cat: 2NM.

REMARK
- Uncategorized ILS APCH RWY 05 due to OBST limitation and restriction according to non-instrument RWY criteria.
- ILS05 signal fulfills ICAO Annex 10, CAT I specifications.

ROD	GS kt	90	110	130	150
	FT/MIN	749	916	1082	1249

COR: TWR&APP FREQ (WEF 19MAR2026)

THIS PAGE INTENTIONALLY LEFT BLANK