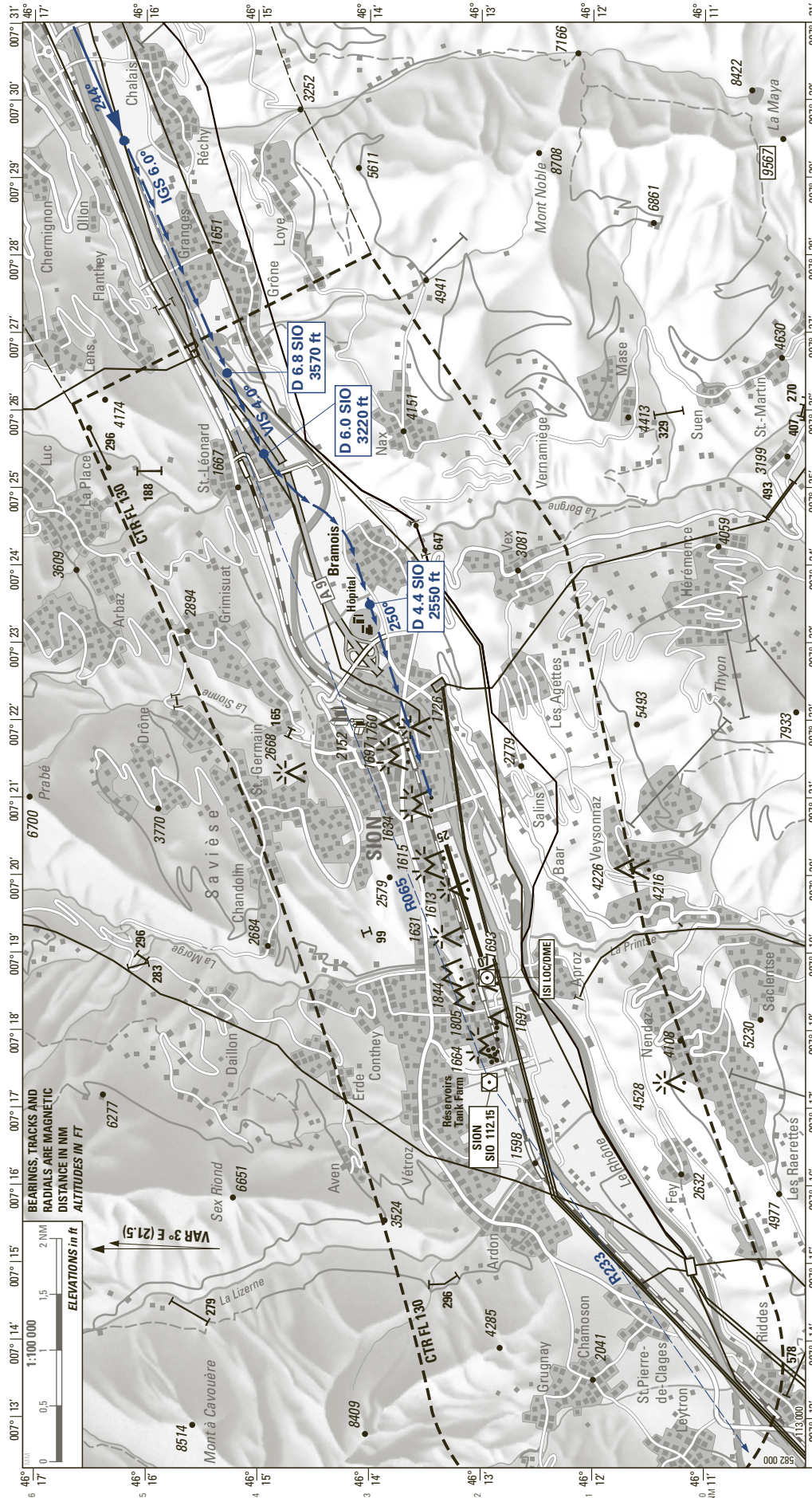


VISUAL APPROACH PROCEDURE

ELEV 1582 ft

SION (LSGS)
 IGS RWY 25



BEARINGS, TRACKS AND RADIALS ARE MAGNETIC
 DISTANCE IN NM
 ALTITUDES IN FT

VAR 3° E (21.5)

1:100 000

ELEVATIONS in ft

0 0.5 1.5 2 NM

NOTE: The altitudes along the visual approach track are for pilots guidance only.
 They are calculated with distance and approach angle (4.0°) and do not grant any terrain clearance according to PANS OPS.
 LOC information unreliable between D0 ISI and D7 ISI,
 use DME information only.

RMK: PAPI RWY 25 4.0° light beam is offset 5° north from runway axis.
CTN: ICAO obstacle protection surface and PAPI light beam are penetrated by topography starting east of Bramois village (D4.0 ISI).
CTN: Power transmission line south of Bramois 647 ft / AGL.

COR: CTR (W/F 19MAR2026) © swisstopo

THIS PAGE INTENTIONALLY LEFT BLANK