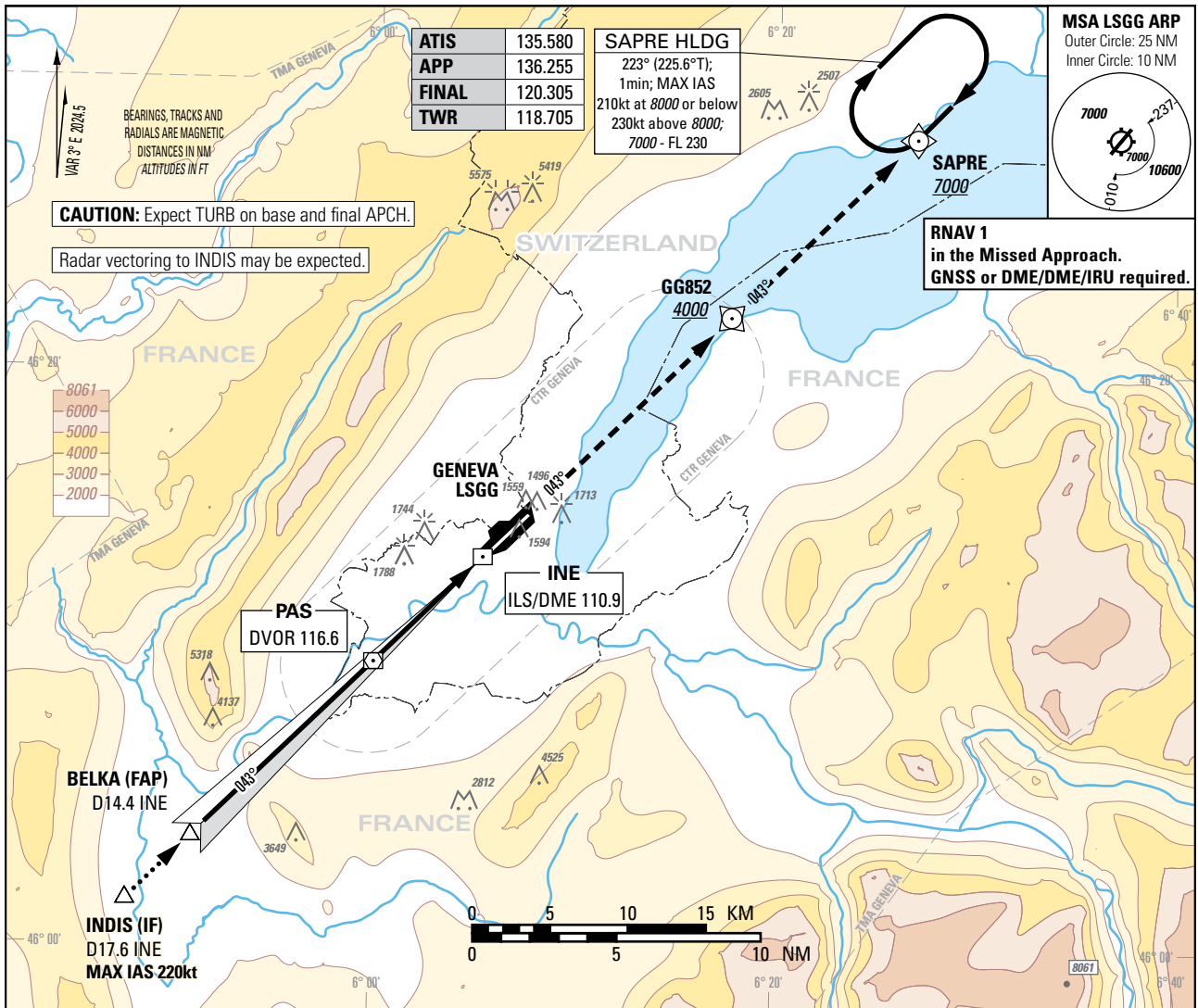


Instrument Approach Chart
(IAC) - ICAO

AD ELEV 1411ft

TRANSITION LEVEL by ATC
TRANSITION ALTITUDE 7000

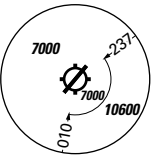
GENEVA (LSGG)
ILS RWY 04



ATIS	135.580
APP	136.255
FINAL	120.305
TWR	118.705

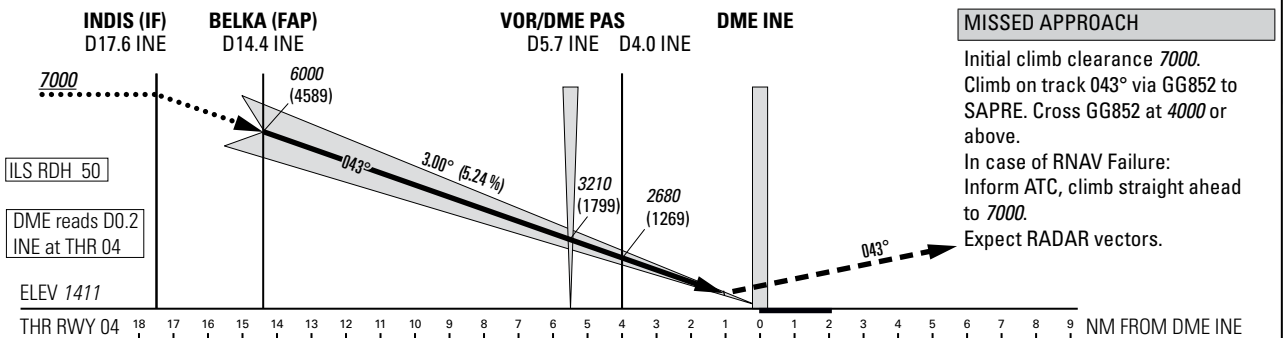
SAPRE HLDG
223° (225.6°T);
1min; MAX IAS
210kt at 8000 or below
230kt above 8000;
7000 - FL 230

MSA LSGG ARP
Outer Circle: 25 NM
Inner Circle: 10 NM



CAUTION: Expect TURB on base and final APCH.
Radar vectoring to INDIS may be expected.

RNAV 1
in the Missed Approach.
GNSS or DME/DME/IRU required.



MISSED APPROACH

Initial climb clearance 7000.
Climb on track 043° via GG852 to SAPRE. Cross GG852 at 4000 or above.
In case of RNAV Failure:
Inform ATC, climb straight ahead to 7000.
Expect RADAR vectors.

OBSTACLE CLEARANCE ALTITUDE (HEIGHT)					
		A	B	C	D
CAT I	pressure altimeter	1601 (190)	1609 (198)	1617 (206)	1627 (216)
		Straight-in approach			
		1611 (200)	1617 (206)	1627 (216)	
		Circling ¹⁾²⁾			
		2100 (689)	2150 (739)	2400 (989)	

DIST DME INE	16	14	12	10	8	6	4	2
recommended CROSSING ALT	6510	5870	5230	4590	3960	3320	2680	2050

ROD	GS kt	90	110	130	150
	FT/MIN	478	584	690	796

NOTE

- ¹⁾ Circling on request of ATC under special conditions and north of RWY only, speed (MAX IAS 180kt) and radius for category D as for category C aircraft.
- ²⁾ Circling must remain inside CTR at all times.

COR: TWR FREQ (WEF 19MAR2026)

THIS PAGE INTENTIONALLY LEFT BLANK