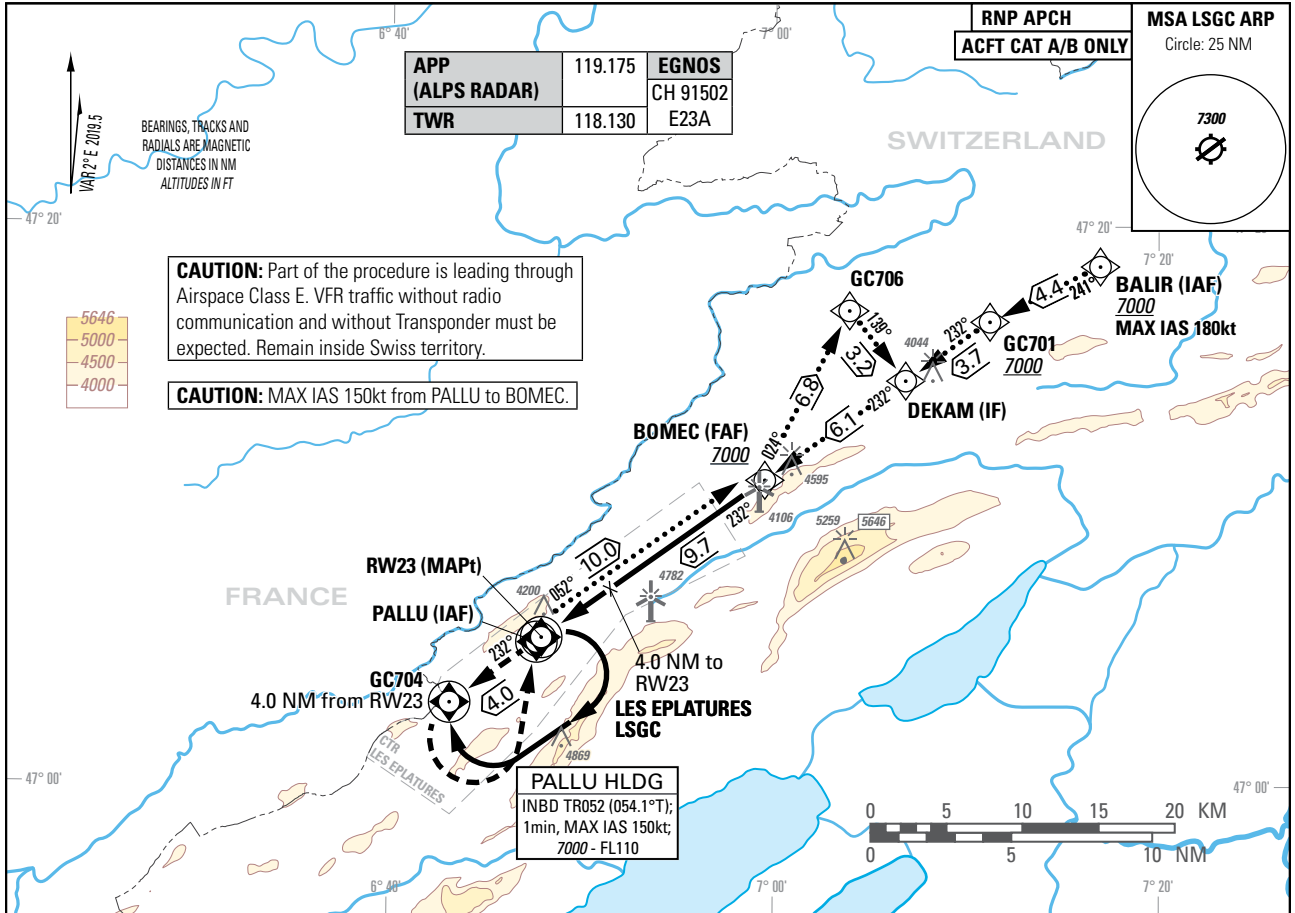


Instrument Approach Chart
(IAC) - ICAO

AD ELEV 3368ft

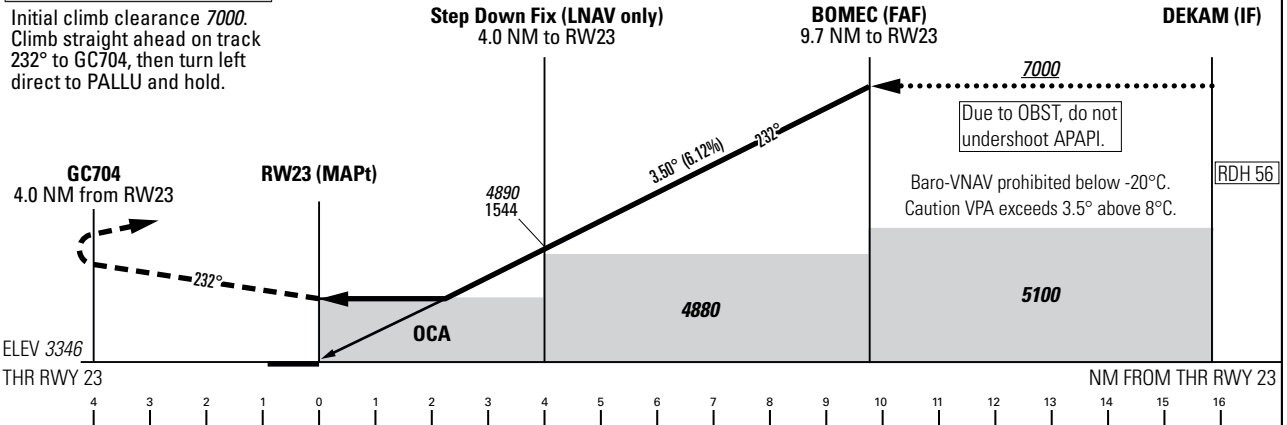
TRANSITION LEVEL by ATC
TRANSITION ALTITUDE 7000

LES EPLATURES (LSGC)
RNP RWY 23



MISSED APPROACH

Initial climb clearance 7000.
Climb straight ahead on track 232° to GC704, then turn left direct to PALLU and hold.



Missed APCH climb gradient requirement	STRAIGHT-IN APPROACH	
	A	B ²⁾
To Altitude	OCA(H) LPV CAT I	
2.5%	3990 (644)	4004 (658)
5.0%	3787 (441)	3802 (456)
	DA(H) LPV CAT I ³⁾	
2.5%	3990 (644)	4004 (658)
5.0%	3846 (500)	
	OCA(H) LNAV/VNAV	
2.5%	4266 (920)	4278 (932)
	OCA(H) LNAV	
2.5%	4410 (1064)	
Circling ¹⁾	4640 (1272)	4990 (1622)

RWY23 DIST		1	2	3	4	5	6	7	8	9
recommended crossing	Altitude	3780	4150	4520	4890	5270	5640	6010	6380	6750
	Height	434	804	1174	1544	1924	2294	2664	3034	3404
	ROD	GS kt		90	110	130	150			
		FT/MIN		557	681	805	929			

REMARK

AIRAC date MAR - OCT 31: Intense GLD ACT within APCH sector and ATS routes.

CAUTION

From 0.7 NM before THR 23 Visual Segment Surface (VSS) penetrated by trees and obstacles up to 3445ft AMSL.
Gliders parked near RWY edge.

NOTE

- ¹⁾ Circling shall remain within CTR limits.
- ²⁾ Higher CAT of ACFT may use the same PROC if they comply with the CAT B restrictions.
- ³⁾ ACFT CAT H may use OCA(H) of CAT A as DA(H) in case final approach AP - coupling (lateral and vertical) is maintained down to 3596ft AMSL (250ft AGL).

COR: chart revised, LNAV/VNAV added, TWR FREQ (WEF 19MAR2026)

Input data

Operation Type	0
SBAS Provider	1 (EGNOS)
Airport Identifier	LSGC
Runway	23
Runway Letter	0 (None)
Approach Performance Designator	0
Route Indicator	
Reference Path Data Selector	0
Reference Path Identifier	E23A
LTP/FTP Latitude	470512.2145N
LTP/FTP Longitude	0064755.3165E
LTP/FTP Ellipsoidal Height (metres)	1070.0
FPAP Latitude	470452.1730N
Delta FPAP Latitude (seconds)	-20.0415
FPAP Longitude	0064714.4805E
Delta FPAP Longitude (seconds)	-40.8360
Threshold Crossing Height	17.1
TCH Units Selector	1 (meters)
Glidepath Angle (degrees)	3.50
Course Width (metres)	80.00
Length Offset (metres)	0
HAL (metres)	40.0
VAL (metres)	35.0

Output data

Data Block	10 03 07 13 0C 17 00 00 01 33 32 05 2D 1A 35 14 69 ED EA 02 CC 3D 6D 63 FF F8 C0 FE 56 81 5E 01 00 00 C8 AF 01 7C 6B CA
Calculated CRC Value	017C6BCA

Required Additional Data

ICAO Code	LS
LTP/FTP Orthometric Height (metres)	1019.9