



---

THIS PAGE INTENTIONALLY LEFT BLANK

<b>AIP Amendment</b>			
NR/Year	Effective date	Date inserted	Inserted by
006/2021	17-Jun-2021	17-Jun-2021	
007/2021	15-Jul-2021	15-Jul-2021	
008/2021	12-Aug-2021	12-Aug-2021	
009/2021	09-Sep-2021	09-Sep-2021	
010/2021	07-Oct-2021	07-Oct-2021	
011/2021	04-Nov-2021	04-Nov-2021	
012/2021	02-Dec-2021	02-Dec-2021	
013/2021	30-Dec-2021	30-Dec-2021	
001/2022	27-Jan-2022	27-Jan-2022	
002/2022	24-Feb-2022	24-Feb-2022	
003/2022	24-Mar-2022	24-Mar-2022	
004/2022	21-Apr-2022	21-Apr-2022	
005/2022	19-May-2022	19-May-2022	
006/2022	16-Jun-2022	16-Jun-2022	
007/2022	14-Jul-2022	14-Jul-2022	
008/2022	11-Aug-2022	11-Aug-2022	
009/2022	08-Sep-2022	08-Sep-2022	
010/2022	06-Oct-2022	06-Oct-2022	
011/2022	03-Nov-2022	03-Nov-2022	
012/2022	01-Dec-2022	01-Dec-2022	
013/2022	29-Dec-2022	29-Dec-2022	
001/2023	26-Jan-2023	26-Jan-2023	
002/2023	23-Feb-2023	23-Feb-2023	
003/2023	23-Mar-2023	23-Mar-2023	
004/2023	20-Apr-2023	20-Apr-2023	
005/2023	18-May-2023	18-May-2023	
006/2023	15-Jun-2023	15-Jun-2023	
007/2023	13-Jul-2023	13-Jul-2023	
008/2023	10-Aug-2023	10-Aug-2023	
009/2023	07-Sep-2023	07-Sep-2023	
010/2023	05-Oct-2023	05-Oct-2023	
011/2023	02-Nov-2023	02-Nov-2023	
012/2023	30-Nov-2023	30-Nov-2023	
013/2023	28-Dec-2023	28-Dec-2023	
001/2024	25-Jan-2024	25-Jan-2024	
002/2024	22-Feb-2024	22-Feb-2024	
003/2024	21-Mar-2024	21-Mar-2024	
004/2024	18-Apr-2024	18-Apr-2024	
005/2024	16-May-2024	16-May-2024	

<b>AIP Amendment</b>			
NR/Year	Effective date	Date inserted	Inserted by
006/2024	13-Jun-2024	13-Jun-2024	
007/2024	11-Jul-2024	11-Jul-2024	
008/2024	08-Aug-2024	08-Aug-2024	
009/2024	05-Sep-2024	05-Sep-2024	
010/2024	03-Oct-2024	03-Oct-2024	
011/2024	31-Oct-2024	31-Oct-2024	
012/2024	28-Nov-2024	28-Nov-2024	
013/2024	26-Dec-2024	26-Dec-2024	
001/2025	23-Jan-2025	23-Jan-2025	
002/2025	20-Feb-2025	20-Feb-2025	
003/2025	20-Mar-2025	20-Mar-2025	
004/2025	17-Apr-2025	17-Apr-2025	
005/2025	15-May-2025	15-May-2025	
006/2025	12-Jun-2025	12-Jun-2025	
007/2025	10-Jul-2025	10-Jul-2025	
008/2025	07-Aug-2025	07-Aug-2025	
009/2025	04-Sep-2025	04-Sep-2025	
010/2025	02-Oct-2025	02-Oct-2025	
011/2025	30-Oct-2025	30-Oct-2025	
012/2025	27-Nov-2025	27-Nov-2025	
013/2025	25-Dec-2025	25-Dec-2025	
001/2026	22-Jan-2026	22-Jan-2026	
002/2026	19-Feb-2026	19-Feb-2026	

**GEN 0.3 RECORD OF SUPPLEMENTS**

NR/Year	Subject	AIP Section(s) Affected	Period of Validity	Cancellation Record
002/2025	Zurich Airport (LSZH): Project - Reconstruction Apron South - B1 - TWY-E7 Phase I-III	LSZH	12-JUN-2025 - UFN	-
003/2025	Zurich Airport (LSZH): RWY 14 GLS APCH NOT AVBL	LSZH	10-Jul-2025 - UFN	-
004/2025	Bern-Belp Airport (LSZB): Reduced GLD RWY length	LSZB	07-AUG-2025 - UFN	-
005/2025	Payerne Airport (LSMP): Revised Minimas RWY 23	LSMP	02-OCT-2025 - 01-JUN-2027	-
006/2025	Zurich Airport (LSZH): Project PKH	LSZH	30-Oct-2025 - UFN	-
007/2025	Geneva Airport (LSGG) - WIP Construction Satellite 10	LSGG	27-Nov-2025 - UFN	-
001/2026	Zurich Airport (LSZH): Project - Reconstruction Apron South - Phase B2 - INNER	LSZH	22-Jan-2026 - UFN	-
002/2026	Zurich Airport (LSZH): Arrival prioritization and departure reconstructions during easterly wind conditions	LSZH	22-Jan-2026 - UFN	-

THIS PAGE INTENTIONALLY LEFT BLANK

## GEN 0.4 CHECKLIST OF AIP PAGES

Page	Date	Page	Date	Page	Date
<b>PART 1 - GENERAL (GEN)</b>					
		GEN 1.7 - 16	30 OCT 2025	GEN 3.3 - 5	AIRAC 13 JUN 2024
		GEN 1.7 - 17	30 OCT 2025	GEN 3.3 - 6	AIRAC 13 JUN 2024
		GEN 1.7 - 18	30 OCT 2025	GEN 3.3 - 7	AIRAC 13 JUN 2024
GEN 0.1 - 1	10 AUG 2023	GEN 1.7 - 19	30 OCT 2025	GEN 3.3 - 8	AIRAC 13 JUN 2024
GEN 0.1 - 2	10 AUG 2023	GEN 1.7 - 20	30 OCT 2025	GEN 3.4 - 1	02 DEC 2021
GEN 0.1 - 3	15 MAY 2025	GEN 1.7 - 21	30 OCT 2025	GEN 3.4 - 2	02 DEC 2021
GEN 0.1 - 4	15 MAY 2025	GEN 1.7 - 22	30 OCT 2025	GEN 3.4 - 3	21 MAR 2024
GEN 0.2 - 1	AIRAC 26 MAY 2016	GEN 1.7 - 23	30 OCT 2025	GEN 3.4 - 4	21 MAR 2024
GEN 0.2 - 2	AIRAC 26 MAY 2016	GEN 1.7 - 24	30 OCT 2025	GEN 3.4 - 5	AIRAC 20 MAY 2021
GEN 0.2 - 3	AIRAC 02 NOV 2023	GEN 1.7 - 25	30 OCT 2025	GEN 3.4 - 6	AIRAC 20 MAY 2021
GEN 0.2 - 4	AIRAC 02 NOV 2023	GEN 1.7 - 26	30 OCT 2025	GEN 3.4 - 7	AIRAC 20 MAY 2021
GEN 0.2 - 5	AIRAC 19 FEB 2026	GEN 2.1 - 1	10 AUG 2023	GEN 3.4 - 8	AIRAC 20 MAY 2021
GEN 0.2 - 6	AIRAC 19 FEB 2026	GEN 2.1 - 2	10 AUG 2023	GEN 3.5 - 1	14 JUL 2022
GEN 0.2 - 7	AIRAC 30 NOV 2023	GEN 2.1 - 3	21 JUL 2016	GEN 3.5 - 2	14 JUL 2022
GEN 0.2 - 8	AIRAC 30 NOV 2023	GEN 2.1 - 4	21 JUL 2016	GEN 3.5 - 3	23 APR 2020
GEN 0.2 - 9	AIRAC 30 NOV 2023	GEN 2.2 - 1	28 NOV 2024	GEN 3.5 - 4	23 APR 2020
GEN 0.2 - 10	AIRAC 30 NOV 2023	GEN 2.2 - 2	28 NOV 2024	GEN 3.5 - 5	23 APR 2020
GEN 0.2 - 11	19 FEB 2026	GEN 2.2 - 3	AIRAC 19 FEB 2026	GEN 3.5 - 6	23 APR 2020
GEN 0.2 - 12	19 FEB 2026	GEN 2.2 - 4	AIRAC 19 FEB 2026	GEN 3.5 - 7	17 APR 2025
GEN 0.3 - 1	19 FEB 2026	GEN 2.2 - 5	AIRAC 19 FEB 2026	GEN 3.5 - 8	17 APR 2025
GEN 0.3 - 2	19 FEB 2026	GEN 2.2 - 6	AIRAC 19 FEB 2026	GEN 3.5 - 9	17 APR 2025
GEN 0.4 - 1	19 FEB 2026	GEN 2.2 - 7	AIRAC 20 FEB 2025	GEN 3.5 - 10	17 APR 2025
GEN 0.4 - 2	19 FEB 2026	GEN 2.2 - 8	AIRAC 20 FEB 2025	GEN 3.5 - 11	17 APR 2025
GEN 0.4 - 3	19 FEB 2026	GEN 2.2 - 9	AIRAC 20 FEB 2025	GEN 3.5 - 12	17 APR 2025
GEN 0.4 - 4	19 FEB 2026	GEN 2.2 - 10	AIRAC 20 FEB 2025	GEN 3.6 - 1	16 JUN 2022
GEN 0.4 - 5	19 FEB 2026	GEN 2.3 - 1	17 APR 2025	GEN 3.6 - 2	16 JUN 2022
GEN 0.4 - 6	19 FEB 2026	GEN 2.3 - 2	17 APR 2025	GEN 3.6 - 3	13 JUN 2024
GEN 0.4 - 7	19 FEB 2026	GEN 2.3 - 3	17 APR 2025	GEN 3.6 - 4	13 JUN 2024
GEN 0.4 - 8	19 FEB 2026	GEN 2.3 - 4	17 APR 2025	GEN 3.6 - 5	15 MAY 2025
GEN 0.5 - 1	11 AUG 2022	GEN 2.3 - 5	17 APR 2025	GEN 3.6 - 6	15 MAY 2025
GEN 0.5 - 2	11 AUG 2022	GEN 2.3 - 6	17 APR 2025	GEN 4.1 - 1	25 DEC 2025
GEN 0.6 - 1	26 DEC 2024	GEN 2.3 - 7	17 APR 2025	GEN 4.1 - 2	25 DEC 2025
GEN 0.6 - 2	26 DEC 2024	GEN 2.3 - 8	17 APR 2025	GEN 4.1 - 3	25 DEC 2025
GEN 0.6 - 3	26 DEC 2024	GEN 2.4 - 1	AIRAC 25 JAN 2024	GEN 4.1 - 4	25 DEC 2025
GEN 0.6 - 4	26 DEC 2024	GEN 2.4 - 2	AIRAC 25 JAN 2024	GEN 4.1 - 5	25 DEC 2025
GEN 1.1 - 1	17 JUN 2021	GEN 2.4 - 3	AIRAC 10 JUL 2025	GEN 4.1 - 6	25 DEC 2025
GEN 1.1 - 2	17 JUN 2021	GEN 2.4 - 4	AIRAC 10 JUL 2025	GEN 4.1 - 7	15 MAY 2025
GEN 1.2 - 1	28 NOV 2024	GEN 2.4 - 5	AIRAC 10 JUL 2025	GEN 4.1 - 8	15 MAY 2025
GEN 1.2 - 2	28 NOV 2024	GEN 2.4 - 6	AIRAC 10 JUL 2025	GEN 4.1 - 9	07 SEP 2023
GEN 1.2 - 3	28 NOV 2024	GEN 2.4 - 7	AIRAC 10 JUL 2025	GEN 4.1 - 10	07 SEP 2023
GEN 1.2 - 4	28 NOV 2024	GEN 2.4 - 8	AIRAC 10 JUL 2025	GEN 4.1 - 11	13 JUN 2024
GEN 1.2 - 5	15 MAY 2025	GEN 2.5 - 1	AIRAC 19 FEB 2026	GEN 4.1 - 12	13 JUN 2024
GEN 1.2 - 6	15 MAY 2025	GEN 2.5 - 2	AIRAC 19 FEB 2026	GEN 4.1 - 13	13 JUN 2024
GEN 1.2 - 7	28 NOV 2024	GEN 2.6 - 1	10 AUG 2023	GEN 4.1 - 14	13 JUN 2024
GEN 1.2 - 8	28 NOV 2024	GEN 2.6 - 2	10 AUG 2023	GEN 4.1 - 15	26 DEC 2024
GEN 1.2 - 9	14 JUL 2022	GEN 2.6 - 3	10 DEC 2015	GEN 4.1 - 16	26 DEC 2024
GEN 1.2 - 10	14 JUL 2022	GEN 2.6 - 4	10 DEC 2015	GEN 4.1 - 17	26 DEC 2024
GEN 1.3 - 1	11 DEC 2014	GEN 2.7 - 1	02 OCT 2025	GEN 4.1 - 18	26 DEC 2024
GEN 1.3 - 2	11 DEC 2014	GEN 2.7 - 2	02 OCT 2025	GEN 4.1 - 19	26 DEC 2024
GEN 1.4 - 1	11 DEC 2014	GEN 2.7 - 3	02 OCT 2025	GEN 4.1 - 20	26 DEC 2024
GEN 1.4 - 2	11 DEC 2014	GEN 2.7 - 4	02 OCT 2025	GEN 4.1 - 21	26 DEC 2024
GEN 1.5 - 1	08 AUG 2024	GEN 2.7 - 5	02 OCT 2025	GEN 4.1 - 22	26 DEC 2024
GEN 1.5 - 2	08 AUG 2024	GEN 2.7 - 6	02 OCT 2025	GEN 4.1 - 23	15 MAY 2025
GEN 1.6 - 1	25 MAR 2021	GEN 3.1 - 1	10 AUG 2023	GEN 4.1 - 24	15 MAY 2025
GEN 1.6 - 2	25 MAR 2021	GEN 3.1 - 2	10 AUG 2023	GEN 4.1 - 25	26 DEC 2024
GEN 1.7 - 1	07 AUG 2025	GEN 3.1 - 3	02 OCT 2025	GEN 4.1 - 26	26 DEC 2024
GEN 1.7 - 2	07 AUG 2025	GEN 3.1 - 4	02 OCT 2025	GEN 4.1 - 27	26 DEC 2024
GEN 1.7 - 3	07 AUG 2025	GEN 3.1 - 5	18 APR 2024	GEN 4.1 - 28	26 DEC 2024
GEN 1.7 - 4	07 AUG 2025	GEN 3.1 - 6	18 APR 2024	GEN 4.1 - 29	26 DEC 2024
GEN 1.7 - 5	30 OCT 2025	GEN 3.1 - 7	18 APR 2024	GEN 4.1 - 30	26 DEC 2024
GEN 1.7 - 6	30 OCT 2025	GEN 3.1 - 8	18 APR 2024	GEN 4.1 - 31	26 DEC 2024
GEN 1.7 - 7	07 AUG 2025	GEN 3.2 - 1	AIRAC 01 DEC 2022	GEN 4.1 - 32	26 DEC 2024
GEN 1.7 - 8	07 AUG 2025	GEN 3.2 - 2	AIRAC 01 DEC 2022	GEN 4.1 - 33	26 DEC 2024
GEN 1.7 - 9	07 AUG 2025	GEN 3.2 - 3	11 DEC 2014	GEN 4.1 - 34	26 DEC 2024
GEN 1.7 - 10	07 AUG 2025	GEN 3.2 - 4	11 DEC 2014	GEN 4.1 - 35	26 DEC 2024
GEN 1.7 - 11	07 AUG 2025	GEN 3.3 - 1	AIRAC 29 DEC 2022	GEN 4.1 - 36	26 DEC 2024
GEN 1.7 - 12	07 AUG 2025	GEN 3.3 - 2	AIRAC 29 DEC 2022	GEN 4.1 - 37	26 DEC 2024
GEN 1.7 - 13	30 OCT 2025	GEN 3.3 - 3	09 SEP 2021	GEN 4.1 - 38	26 DEC 2024
GEN 1.7 - 14	30 OCT 2025	GEN 3.3 - 4	09 SEP 2021	GEN 4.1 - 39	10 JUL 2025
GEN 1.7 - 15	30 OCT 2025				

Page	Date	Page	Date	Page	Date
GEN 4.1 - 40	10 JUL 2025	GEN 4.2 - 17	19 FEB 2026	ENR 1.12 - 2	28 MAY 2015
GEN 4.1 - 41	10 JUL 2025	GEN 4.2 - 18	19 FEB 2026	ENR 1.12 - 3	28 MAY 2015
GEN 4.1 - 42	10 JUL 2025	GEN 4.2 - 19	30 MAR 2017	ENR 1.12 - 4	28 MAY 2015
GEN 4.1 - 43	10 JUL 2025	GEN 4.2 - 20	30 MAR 2017	ENR 1.13 - 1	28 MAY 2015
GEN 4.1 - 44	10 JUL 2025	GEN 4.2 - 21	30 MAR 2017	ENR 1.13 - 2	28 MAY 2015
GEN 4.1 - 45	10 JUL 2025	GEN 4.2 - 22	30 MAR 2017	ENR 1.14 - 1	10 AUG 2023
GEN 4.1 - 46	10 JUL 2025			ENR 1.14 - 2	10 AUG 2023
GEN 4.1 - 47	10 JUL 2025			ENR 2.1 - 1	AIRAC 25 DEC 2025
GEN 4.1 - 48	10 JUL 2025	<b>PART 2 - EN-ROUTE (ENR)</b>		ENR 2.1 - 2	AIRAC 25 DEC 2025
GEN 4.1 - 49	25 DEC 2025			ENR 2.1 - 3	AIRAC 20 MAR 2025
GEN 4.1 - 50	25 DEC 2025	ENR 0.1 - 1	10 AUG 2023	ENR 2.1 - 4	AIRAC 20 MAR 2025
GEN 4.1 - 51	25 DEC 2025	ENR 0.1 - 2	10 AUG 2023	ENR 2.1 - 5	AIRAC 20 MAR 2025
GEN 4.1 - 52	25 DEC 2025	ENR 0.2 - 1	26 JAN 2023	ENR 2.1 - 6	AIRAC 20 MAR 2025
GEN 4.1 - 53	25 DEC 2025	ENR 0.2 - 2	26 JAN 2023	ENR 2.1 - 7	AIRAC 20 MAR 2025
GEN 4.1 - 54	25 DEC 2025	ENR 0.3 - 1	26 JAN 2023	ENR 2.1 - 8	AIRAC 20 MAR 2025
GEN 4.1 - 55	25 DEC 2025	ENR 0.3 - 2	26 JAN 2023	ENR 2.1 - 9	AIRAC 20 MAR 2025
GEN 4.1 - 56	25 DEC 2025	ENR 0.4 - 1	26 JAN 2023	ENR 2.1 - 10	AIRAC 20 MAR 2025
GEN 4.1 - 57	25 DEC 2025	ENR 0.4 - 2	26 JAN 2023	ENR 2.1 - 11	AIRAC 20 MAR 2025
GEN 4.1 - 58	25 DEC 2025	ENR 0.5 - 1	26 JAN 2023	ENR 2.1 - 12	AIRAC 20 MAR 2025
GEN 4.1 - 59	25 DEC 2025	ENR 0.5 - 2	26 JAN 2023	ENR 2.1 - 13	17 APR 2025
GEN 4.1 - 60	25 DEC 2025	ENR 0.6 - 1	15 MAY 2025	ENR 2.1 - 14	17 APR 2025
GEN 4.1 - 61	25 DEC 2025	ENR 0.6 - 2	15 MAY 2025	ENR 2.1 - 15	AIRAC 25 MAR 2021
GEN 4.1 - 62	25 DEC 2025	ENR 0.6 - 3	15 MAY 2025	ENR 2.1 - 16	AIRAC 25 MAR 2021
GEN 4.1 - 63	25 DEC 2025	ENR 0.6 - 4	15 MAY 2025	ENR 2.1 - 17	AIRAC 25 MAR 2021
GEN 4.1 - 64	25 DEC 2025	ENR 1.1 - 1	AIRAC 31 OCT 2024	ENR 2.1 - 18	AIRAC 25 MAR 2021
GEN 4.1 - 65	25 DEC 2025	ENR 1.1 - 2	AIRAC 31 OCT 2024	ENR 2.1 - 19	AIRAC 20 MAR 2025
GEN 4.1 - 66	25 DEC 2025	ENR 1.1 - 3	15 MAY 2025	ENR 2.1 - 20	AIRAC 20 MAR 2025
GEN 4.1 - 67	25 DEC 2025	ENR 1.1 - 4	15 MAY 2025	ENR 2.1 - 21	AIRAC 21 MAR 2024
GEN 4.1 - 68	25 DEC 2025	ENR 1.2 - 1	20 AUG 2015	ENR 2.1 - 22	AIRAC 21 MAR 2024
GEN 4.1 - 69	25 DEC 2025	ENR 1.2 - 2	20 AUG 2015	ENR 2.1 - 23	AIRAC 20 MAR 2025
GEN 4.1 - 70	25 DEC 2025	ENR 1.3 - 1	15 MAY 2025	ENR 2.1 - 24	AIRAC 20 MAR 2025
GEN 4.1 - 71	25 DEC 2025	ENR 1.3 - 2	15 MAY 2025	ENR 2.1 - 25	AIRAC 20 MAR 2025
GEN 4.1 - 72	25 DEC 2025	ENR 1.3 - 3	AIRAC 27 NOV 2025	ENR 2.1 - 26	AIRAC 20 MAR 2025
GEN 4.1 - 73	25 DEC 2025	ENR 1.3 - 4	AIRAC 27 NOV 2025	ENR 2.2 - 1	AIRAC 20 FEB 2025
GEN 4.1 - 74	25 DEC 2025	ENR 1.4 - 1	AIRAC 20 MAR 2025	ENR 2.2 - 2	AIRAC 20 FEB 2025
GEN 4.1 - 75	25 DEC 2025	ENR 1.4 - 2	AIRAC 20 MAR 2025	ENR 2.2 - 3	20 MAR 2025
GEN 4.1 - 76	25 DEC 2025	ENR 1.4 - 3	11 JUL 2024	ENR 2.2 - 4	20 MAR 2025
GEN 4.1 - 77	26 DEC 2024	ENR 1.4 - 4	11 JUL 2024	ENR 2.2 - 5	20 MAR 2025
GEN 4.1 - 78	25 DEC 2025	ENR 1.4 - 5	27 NOV 2025	ENR 2.2 - 6	20 MAR 2025
GEN 4.1 - 79	25 DEC 2025	ENR 1.4 - 6	27 NOV 2025	ENR 3.1 - 1	13 JUN 2024
GEN 4.1 - 80	25 DEC 2025	ENR 1.5 - 1	20 FEB 2025	ENR 3.1 - 2	13 JUN 2024
GEN 4.1 - 81	25 DEC 2025	ENR 1.5 - 2	20 FEB 2025	ENR 3.2 - 1	AIRAC 27 NOV 2025
GEN 4.1 - 82	25 DEC 2025	ENR 1.5 - 3	23 APR 2020	ENR 3.2 - 2	AIRAC 27 NOV 2025
GEN 4.1 - 83	25 DEC 2025	ENR 1.5 - 4	23 APR 2020	ENR 3.2 - 3	AIRAC 19 FEB 2026
GEN 4.1 - 84	25 DEC 2025	ENR 1.6 - 1	15 MAY 2025	ENR 3.2 - 4	AIRAC 19 FEB 2026
GEN 4.1 - 85	25 DEC 2025	ENR 1.6 - 2	15 MAY 2025	ENR 3.2 - 5	AIRAC 30 OCT 2025
GEN 4.1 - 86	25 DEC 2025	ENR 1.6 - 3	15 MAY 2025	ENR 3.2 - 6	AIRAC 30 OCT 2025
GEN 4.1 - 87	25 DEC 2025	ENR 1.6 - 4	15 MAY 2025	ENR 3.2 - 7	AIRAC 30 OCT 2025
GEN 4.1 - 88	25 DEC 2025	ENR 1.7 - 1	15 MAY 2025	ENR 3.2 - 8	AIRAC 30 OCT 2025
GEN 4.1 - 89	25 DEC 2025	ENR 1.7 - 2	15 MAY 2025	ENR 3.2 - 9	AIRAC 30 OCT 2025
GEN 4.1 - 90	25 DEC 2025	ENR 1.7 - 3	AIRAC 22 APR 2021	ENR 3.2 - 10	AIRAC 30 OCT 2025
GEN 4.1 - 91	25 DEC 2025	ENR 1.7 - 4	AIRAC 22 APR 2021	ENR 3.2 - 11	AIRAC 19 FEB 2026
GEN 4.1 - 92	25 DEC 2025	ENR 1.7 - 5	15 MAY 2025	ENR 3.2 - 12	AIRAC 19 FEB 2026
GEN 4.1 - 93	25 DEC 2025	ENR 1.7 - 6	15 MAY 2025	ENR 3.2 - 13	AIRAC 19 FEB 2026
GEN 4.1 - 94	25 DEC 2025	ENR 1.8 - 1	08 AUG 2024	ENR 3.2 - 14	AIRAC 19 FEB 2026
GEN 4.2 - 1	19 FEB 2026	ENR 1.8 - 2	08 AUG 2024	ENR 3.2 - 15	AIRAC 19 FEB 2026
GEN 4.2 - 2	19 FEB 2026	ENR 1.9 - 1	AIRAC 22 FEB 2024	ENR 3.2 - 16	AIRAC 19 FEB 2026
GEN 4.2 - 3	30 MAR 2017	ENR 1.9 - 2	AIRAC 22 FEB 2024	ENR 3.2 - 17	AIRAC 19 FEB 2026
GEN 4.2 - 4	30 MAR 2017	ENR 1.9 - 3	10 JUL 2025	ENR 3.2 - 18	AIRAC 19 FEB 2026
GEN 4.2 - 5	30 MAR 2017	ENR 1.9 - 4	10 JUL 2025	ENR 3.2 - 19	AIRAC 19 FEB 2026
GEN 4.2 - 6	30 MAR 2017	ENR 1.10 - 1	AIRAC 20 FEB 2025	ENR 3.2 - 20	AIRAC 19 FEB 2026
GEN 4.2 - 7	30 MAR 2017	ENR 1.10 - 2	AIRAC 20 FEB 2025	ENR 3.2 - 21	AIRAC 19 FEB 2026
GEN 4.2 - 8	30 MAR 2017	ENR 1.10 - 3	21 APR 2022	ENR 3.2 - 22	AIRAC 19 FEB 2026
GEN 4.2 - 9	30 MAR 2017	ENR 1.10 - 4	21 APR 2022	ENR 3.2 - 23	AIRAC 30 OCT 2025
GEN 4.2 - 10	30 MAR 2017	ENR 1.10 - 5	20 MAR 2025	ENR 3.2 - 24	AIRAC 30 OCT 2025
GEN 4.2 - 11	19 FEB 2026	ENR 1.10 - 6	20 MAR 2025	ENR 3.2 - 25	AIRAC 30 OCT 2025
GEN 4.2 - 12	19 FEB 2026	ENR 1.11 - 1	AIRAC 31 OCT 2024	ENR 3.2 - 26	AIRAC 30 OCT 2025
GEN 4.2 - 13	19 FEB 2026	ENR 1.11 - 2	AIRAC 31 OCT 2024	ENR 3.2 - 27	AIRAC 19 FEB 2026
GEN 4.2 - 14	19 FEB 2026	ENR 1.11 - 3	28 MAY 2015	ENR 3.2 - 28	AIRAC 19 FEB 2026
GEN 4.2 - 15	19 FEB 2026	ENR 1.11 - 4	28 MAY 2015	ENR 3.2 - 29	AIRAC 19 FEB 2026
GEN 4.2 - 16	19 FEB 2026	ENR 1.12 - 1	28 MAY 2015	ENR 3.2 - 30	AIRAC 19 FEB 2026

Page	Date	Page	Date	Page	Date
ENR 3.2 - 31	AIRAC 19 FEB 2026	ENR 3.3 - 12	AIRAC 19 FEB 2026	ENR 5.2 - 19	AIRAC 21 MAR 2024
ENR 3.2 - 32	AIRAC 19 FEB 2026	ENR 3.3 - 13	AIRAC 19 FEB 2026	ENR 5.2 - 20	AIRAC 21 MAR 2024
ENR 3.2 - 33	AIRAC 30 OCT 2025	ENR 3.3 - 14	AIRAC 19 FEB 2026	ENR 5.2 - 21	AIRAC 21 MAR 2024
ENR 3.2 - 34	AIRAC 30 OCT 2025	ENR 3.3 - 15	AIRAC 19 FEB 2026	ENR 5.2 - 22	AIRAC 21 MAR 2024
ENR 3.2 - 35	AIRAC 30 OCT 2025	ENR 3.3 - 16	AIRAC 19 FEB 2026	ENR 5.2 - 23	AIRAC 21 MAR 2024
ENR 3.2 - 36	AIRAC 30 OCT 2025	ENR 3.3 - 17	AIRAC 19 FEB 2026	ENR 5.2 - 24	AIRAC 21 MAR 2024
ENR 3.2 - 37	AIRAC 19 FEB 2026	ENR 3.3 - 18	AIRAC 19 FEB 2026	ENR 5.2 - 25	AIRAC 21 MAR 2024
ENR 3.2 - 38	AIRAC 19 FEB 2026	ENR 3.4 - 1	13 JUN 2024	ENR 5.2 - 26	AIRAC 21 MAR 2024
ENR 3.2 - 39	AIRAC 19 FEB 2026	ENR 3.4 - 2	13 JUN 2024	ENR 5.2 - 27	AIRAC 21 MAR 2024
ENR 3.2 - 40	AIRAC 19 FEB 2026	ENR 4.1 - 1	AIRAC 19 FEB 2026	ENR 5.2 - 28	AIRAC 21 MAR 2024
ENR 3.2 - 41	AIRAC 19 FEB 2026	ENR 4.1 - 2	AIRAC 19 FEB 2026	ENR 5.2 - 29	AIRAC 21 MAR 2024
ENR 3.2 - 42	AIRAC 19 FEB 2026	ENR 4.2 - 1	26 JAN 2023	ENR 5.2 - 30	AIRAC 21 MAR 2024
ENR 3.2 - 43	AIRAC 19 FEB 2026	ENR 4.2 - 2	26 JAN 2023	ENR 5.2 - 31	AIRAC 10 JUL 2025
ENR 3.2 - 44	AIRAC 19 FEB 2026	ENR 4.3 - 1	15 JUL 2021	ENR 5.2 - 32	AIRAC 10 JUL 2025
ENR 3.2 - 45	AIRAC 19 FEB 2026	ENR 4.3 - 2	15 JUL 2021	ENR 5.2 - 33	AIRAC 23 MAR 2023
ENR 3.2 - 46	AIRAC 19 FEB 2026	ENR 4.4 - 1	AIRAC 27 NOV 2025	ENR 5.2 - 34	AIRAC 23 MAR 2023
ENR 3.2 - 47	AIRAC 19 FEB 2026	ENR 4.4 - 2	AIRAC 27 NOV 2025	ENR 5.2 - 35	AIRAC 23 MAR 2023
ENR 3.2 - 48	AIRAC 19 FEB 2026	ENR 4.4 - 3	AIRAC 27 NOV 2025	ENR 5.2 - 36	AIRAC 23 MAR 2023
ENR 3.2 - 49	AIRAC 27 NOV 2025	ENR 4.4 - 4	AIRAC 27 NOV 2025	ENR 5.2 - 37	AIRAC 21 MAR 2024
ENR 3.2 - 50	AIRAC 27 NOV 2025	ENR 4.4 - 5	AIRAC 27 NOV 2025	ENR 5.2 - 38	AIRAC 21 MAR 2024
ENR 3.2 - 51	AIRAC 30 OCT 2025	ENR 4.4 - 6	AIRAC 27 NOV 2025	ENR 5.2 - 39	20 MAR 2025
ENR 3.2 - 52	AIRAC 30 OCT 2025	ENR 4.4 - 7	AIRAC 27 NOV 2025	ENR 5.2 - 40	20 MAR 2025
ENR 3.2 - 53	AIRAC 30 OCT 2025	ENR 4.4 - 8	AIRAC 27 NOV 2025	ENR 5.2 - 41	20 MAR 2025
ENR 3.2 - 54	AIRAC 30 OCT 2025	ENR 4.4 - 9	AIRAC 27 NOV 2025	ENR 5.2 - 42	20 MAR 2025
ENR 3.2 - 55	AIRAC 19 FEB 2026	ENR 4.4 - 10	AIRAC 27 NOV 2025	ENR 5.3 - 1	15 MAY 2025
ENR 3.2 - 56	AIRAC 19 FEB 2026	ENR 4.4 - 11	AIRAC 27 NOV 2025	ENR 5.3 - 2	15 MAY 2025
ENR 3.2 - 57	AIRAC 19 FEB 2026	ENR 4.4 - 12	AIRAC 27 NOV 2025	ENR 5.4 - 1	18 APR 2024
ENR 3.2 - 58	AIRAC 19 FEB 2026	ENR 4.4 - 13	AIRAC 27 NOV 2025	ENR 5.4 - 2	18 APR 2024
ENR 3.2 - 59	AIRAC 30 OCT 2025	ENR 4.4 - 14	AIRAC 27 NOV 2025	ENR 5.5 - 1	AIRAC 21 MAR 2024
ENR 3.2 - 60	AIRAC 30 OCT 2025	ENR 4.4 - 15	AIRAC 27 NOV 2025	ENR 5.5 - 2	AIRAC 21 MAR 2024
ENR 3.2 - 61	AIRAC 30 OCT 2025	ENR 4.4 - 16	AIRAC 27 NOV 2025	ENR 5.5 - 3	AIRAC 21 MAR 2024
ENR 3.2 - 62	AIRAC 30 OCT 2025	ENR 4.5 - 1	26 JAN 2023	ENR 5.5 - 4	AIRAC 21 MAR 2024
ENR 3.2 - 63	AIRAC 19 FEB 2026	ENR 4.5 - 2	26 JAN 2023	ENR 5.5 - 5	AIRAC 24 MAR 2022
ENR 3.2 - 64	AIRAC 19 FEB 2026	ENR 5.1 - 1	AIRAC 21 MAR 2024	ENR 5.5 - 6	AIRAC 24 MAR 2022
ENR 3.2 - 65	AIRAC 30 OCT 2025	ENR 5.1 - 2	AIRAC 21 MAR 2024	ENR 5.5 - 7	AIRAC 24 MAR 2022
ENR 3.2 - 66	AIRAC 30 OCT 2025	ENR 5.1 - 3	AIRAC 21 MAR 2024	ENR 5.5 - 8	AIRAC 24 MAR 2022
ENR 3.2 - 67	AIRAC 19 FEB 2026	ENR 5.1 - 4	AIRAC 21 MAR 2024	ENR 5.5 - 9	AIRAC 21 MAR 2024
ENR 3.2 - 68	AIRAC 19 FEB 2026	ENR 5.1 - 5	AIRAC 21 MAR 2024	ENR 5.5 - 10	AIRAC 21 MAR 2024
ENR 3.2 - 69	AIRAC 30 OCT 2025	ENR 5.1 - 6	AIRAC 21 MAR 2024	ENR 5.5 - 11	17 APR 2025
ENR 3.2 - 70	AIRAC 30 OCT 2025	ENR 5.1 - 7	AIRAC 21 MAR 2024	ENR 5.5 - 12	17 APR 2025
ENR 3.2 - 71	AIRAC 30 OCT 2025	ENR 5.1 - 8	AIRAC 21 MAR 2024	ENR 5.5 - 13	AIRAC 20 MAR 2025
ENR 3.2 - 72	AIRAC 30 OCT 2025	ENR 5.1 - 9	16 MAY 2024	ENR 5.5 - 14	AIRAC 20 MAR 2025
ENR 3.2 - 73	AIRAC 30 OCT 2025	ENR 5.1 - 10	16 MAY 2024	ENR 5.5 - 15	AIRAC 20 MAR 2025
ENR 3.2 - 74	AIRAC 30 OCT 2025	ENR 5.1 - 11	AIRAC 21 MAR 2024	ENR 5.5 - 16	AIRAC 20 MAR 2025
ENR 3.2 - 75	AIRAC 30 OCT 2025	ENR 5.1 - 12	AIRAC 21 MAR 2024	ENR 5.5 - 17	17 APR 2025
ENR 3.2 - 76	AIRAC 30 OCT 2025	ENR 5.1 - 13	AIRAC 21 MAR 2024	ENR 5.5 - 18	17 APR 2025
ENR 3.2 - 77	AIRAC 30 OCT 2025	ENR 5.1 - 14	AIRAC 21 MAR 2024	ENR 5.5 - 19	15 MAY 2025
ENR 3.2 - 78	AIRAC 30 OCT 2025	ENR 5.1 - 15	AIRAC 20 MAR 2025	ENR 5.5 - 20	15 MAY 2025
ENR 3.2 - 79	AIRAC 30 OCT 2025	ENR 5.1 - 16	AIRAC 20 MAR 2025	ENR 5.6 - 1	15 OCT 2015
ENR 3.2 - 80	AIRAC 30 OCT 2025	ENR 5.1 - 17	AIRAC 20 MAR 2025	ENR 5.6 - 2	15 OCT 2015
ENR 3.2 - 81	AIRAC 30 OCT 2025	ENR 5.1 - 18	AIRAC 20 MAR 2025	ENR 5.6 - 3	15 MAY 2025
ENR 3.2 - 82	AIRAC 30 OCT 2025	ENR 5.1 - 19	AIRAC 21 MAR 2024	ENR 5.6 - 4	15 MAY 2025
ENR 3.2 - 83	AIRAC 19 FEB 2026	ENR 5.1 - 20	AIRAC 21 MAR 2024	ENR 5.6 - 5	15 MAY 2025
ENR 3.2 - 84	AIRAC 19 FEB 2026	ENR 5.2 - 1	AIRAC 21 MAR 2024	ENR 5.6 - 6	15 MAY 2025
ENR 3.2 - 85	AIRAC 30 OCT 2025	ENR 5.2 - 2	AIRAC 21 MAR 2024	ENR 5.6 - 7	15 MAY 2025
ENR 3.2 - 86	AIRAC 30 OCT 2025	ENR 5.2 - 3	AIRAC 21 MAR 2024	ENR 5.6 - 8	15 MAY 2025
ENR 3.2 - 87	AIRAC 19 FEB 2026	ENR 5.2 - 4	AIRAC 21 MAR 2024	ENR 6 - 1	18 MAY 2023
ENR 3.2 - 88	AIRAC 19 FEB 2026	ENR 5.2 - 5	AIRAC 21 MAR 2024	ENR 6 - 2	18 MAY 2023
ENR 3.2 - 89	AIRAC 30 OCT 2025	ENR 5.2 - 6	AIRAC 21 MAR 2024	ENR 6.1 - 1	AIRAC 22 JAN 2026
ENR 3.2 - 90	AIRAC 30 OCT 2025	ENR 5.2 - 7	AIRAC 21 MAR 2024	ENR 6.1 - 2	AIRAC 22 JAN 2026
ENR 3.3 - 1	AIRAC 19 FEB 2026	ENR 5.2 - 8	AIRAC 21 MAR 2024	ENR 6.3 - 1	AIRAC 19 FEB 2026
ENR 3.3 - 2	AIRAC 19 FEB 2026	ENR 5.2 - 9	AIRAC 21 MAR 2024	ENR 6.3 - 2	AIRAC 19 FEB 2026
ENR 3.3 - 3	AIRAC 19 FEB 2026	ENR 5.2 - 10	AIRAC 21 MAR 2024	ENR 6.4 - 1	AIRAC 27 NOV 2025
ENR 3.3 - 4	AIRAC 19 FEB 2026	ENR 5.2 - 11	AIRAC 21 MAR 2024	ENR 6.4 - 2	AIRAC 27 NOV 2025
ENR 3.3 - 5	AIRAC 19 FEB 2026	ENR 5.2 - 12	AIRAC 21 MAR 2024	ENR 6.5 - 1	20 MAR 2025
ENR 3.3 - 6	AIRAC 19 FEB 2026	ENR 5.2 - 13	AIRAC 21 MAR 2024	ENR 6.5 - 2	20 MAR 2025
ENR 3.3 - 7	AIRAC 19 FEB 2026	ENR 5.2 - 14	AIRAC 21 MAR 2024	ENR 6.7 - 1	20 MAR 2025
ENR 3.3 - 8	AIRAC 19 FEB 2026	ENR 5.2 - 15	AIRAC 21 MAR 2024	ENR 6.7 - 2	20 MAR 2025
ENR 3.3 - 9	AIRAC 19 FEB 2026	ENR 5.2 - 16	AIRAC 21 MAR 2024		
ENR 3.3 - 10	AIRAC 19 FEB 2026	ENR 5.2 - 17	AIRAC 21 MAR 2024		
ENR 3.3 - 11	AIRAC 19 FEB 2026	ENR 5.2 - 18	AIRAC 21 MAR 2024		

**PART 3 - AERODROMES (AD)**

Page	Date	Page	Date	Page	Date
AD 0.1 - 1	26 JAN 2023	LSZB AD 2.24.4 - 4	AIRAC 20 FEB 2025	LSGC AD 2.24.7 - 3	AIRAC 30 OCT 2025
AD 0.1 - 2	26 JAN 2023	LSZB AD 2.24.6 - 1	AIRAC 20 FEB 2025	LSGC AD 2.24.7 - 4	AIRAC 30 OCT 2025
AD 0.2 - 1	26 JAN 2023	LSZB AD 2.24.6 - 2	AIRAC 20 FEB 2025	LSGC AD 2.24.9 - 1	AIRAC 30 OCT 2025
AD 0.2 - 2	26 JAN 2023	LSZB AD 2.24.7 - 1	AIRAC 20 FEB 2025	LSGC AD 2.24.9 - 2	AIRAC 30 OCT 2025
AD 0.3 - 1	26 JAN 2023	LSZB AD 2.24.7 - 2	AIRAC 20 FEB 2025	LSGC AD 2.24.9 - 3	AIRAC 30 OCT 2025
AD 0.3 - 2	26 JAN 2023	LSZB AD 2.24.7 - 3	AIRAC 20 FEB 2025	LSGC AD 2.24.9 - 4	AIRAC 30 OCT 2025
AD 0.4 - 1	26 JAN 2023	LSZB AD 2.24.7 - 4	AIRAC 20 FEB 2025	LSGC AD 2.24.10 - 1	AIRAC 30 OCT 2025
AD 0.4 - 2	26 JAN 2023	LSZB AD 2.24.9 - 1	AIRAC 20 FEB 2025	LSGC AD 2.24.10 - 2	AIRAC 30 OCT 2025
AD 0.5 - 1	26 JAN 2023	LSZB AD 2.24.9 - 2	AIRAC 20 FEB 2025	LSGC AD 2.24.10 - 3	AIRAC 30 OCT 2025
AD 0.5 - 2	26 JAN 2023	LSZB AD 2.24.10 - 1	AIRAC 20 FEB 2025	LSGC AD 2.24.10 - 4	AIRAC 30 OCT 2025
AD 0.6 - 1	04 SEP 2025	LSZB AD 2.24.10 - 2	AIRAC 20 FEB 2025	LSGG AD 2 - 1	20 FEB 2025
AD 0.6 - 2	04 SEP 2025	LSZB AD 2.24.10 - 3	AIRAC 20 FEB 2025	LSGG AD 2 - 2	20 FEB 2025
AD 0.6 - 3	04 SEP 2025	LSZB AD 2.24.10 - 4	AIRAC 20 FEB 2025	LSGG AD 2 - 3	07 AUG 2025
AD 0.6 - 4	04 SEP 2025	LSZB AD 2.24.10 - 5	AIRAC 20 FEB 2025	LSGG AD 2 - 4	07 AUG 2025
AD 0.6 - 5	04 SEP 2025	LSZB AD 2.24.10 - 6	AIRAC 20 FEB 2025	LSGG AD 2 - 5	07 AUG 2025
AD 0.6 - 6	04 SEP 2025	LSZB AD 2.24.10 - 7	22 JAN 2026	LSGG AD 2 - 6	07 AUG 2025
AD 0.6 - 7	04 SEP 2025	LSZB AD 2.24.10 - 8	22 JAN 2026	LSGG AD 2 - 7	07 AUG 2025
AD 0.6 - 8	04 SEP 2025	LSZB AD 2.24.10 - 9	22 JAN 2026	LSGG AD 2 - 8	07 AUG 2025
AD 0.6 - 9	04 SEP 2025	LSZB AD 2.24.10 - 10	22 JAN 2026	LSGG AD 2 - 9	07 AUG 2025
AD 0.6 - 10	04 SEP 2025	LSZB AD 2.24.10 - 11	AIRAC 20 FEB 2025	LSGG AD 2 - 10	07 AUG 2025
AD 0.6 - 11	04 SEP 2025	LSZB AD 2.24.10 - 12	AIRAC 20 FEB 2025	LSGG AD 2 - 11	07 AUG 2025
AD 0.6 - 12	04 SEP 2025	LSZB AD 2.24.13 - 1	AIRAC 20 FEB 2025	LSGG AD 2 - 12	07 AUG 2025
AD 0.6 - 13	04 SEP 2025	LSZB AD 2.24.13 - 2	AIRAC 20 FEB 2025	LSGG AD 2 - 13	AIRAC 19 FEB 2026
AD 0.6 - 14	04 SEP 2025	LSZB AD 2.24.13 - 3	20 FEB 2025	LSGG AD 2 - 14	AIRAC 19 FEB 2026
AD 1.1 - 1	19 MAY 2022	LSZB AD 2.24.13 - 4	20 FEB 2025	LSGG AD 2 - 15	07 AUG 2025
AD 1.1 - 2	19 MAY 2022	LSZC AD 2 - 1	20 MAR 2025	LSGG AD 2 - 16	07 AUG 2025
AD 1.1 - 3	28 NOV 2024	LSZC AD 2 - 2	20 MAR 2025	LSGG AD 2 - 17	07 AUG 2025
AD 1.1 - 4	28 NOV 2024	LSZC AD 2 - 3	20 MAR 2025	LSGG AD 2 - 18	07 AUG 2025
AD 1.1 - 5	15 MAY 2025	LSZC AD 2 - 4	20 MAR 2025	LSGG AD 2 - 19	07 AUG 2025
AD 1.1 - 6	15 MAY 2025	LSZC AD 2 - 5	AIRAC 19 FEB 2026	LSGG AD 2 - 20	07 AUG 2025
AD 1.2 - 1	28 DEC 2023	LSZC AD 2 - 6	AIRAC 19 FEB 2026	LSGG AD 2 - 21	07 AUG 2025
AD 1.2 - 2	28 DEC 2023	LSZC AD 2 - 7	15 MAY 2025	LSGG AD 2 - 22	07 AUG 2025
AD 1.2 - 3	19 MAY 2022	LSZC AD 2 - 8	15 MAY 2025	LSGG AD 2 - 23	07 AUG 2025
AD 1.2 - 4	19 MAY 2022	LSZC AD 2 - 9	17 APR 2025	LSGG AD 2 - 24	07 AUG 2025
AD 1.3 - 1	04 SEP 2025	LSZC AD 2 - 10	17 APR 2025	LSGG AD 2 - 25	22 JAN 2026
AD 1.3 - 2	04 SEP 2025	LSZC AD 2.24.1 - 1	15 MAY 2025	LSGG AD 2 - 26	22 JAN 2026
AD 1.3 - 3	04 SEP 2025	LSZC AD 2.24.1 - 2	15 MAY 2025	LSGG AD 2 - 27	07 AUG 2025
AD 1.3 - 4	04 SEP 2025	LSZC AD 2.24.4 - 1	20 MAR 2025	LSGG AD 2 - 28	07 AUG 2025
AD 1.3 - 5	04 SEP 2025	LSZC AD 2.24.4 - 2	20 MAR 2025	LSGG AD 2 - 29	07 AUG 2025
AD 1.3 - 6	04 SEP 2025	LSZC AD 2.24.7 - 1	26 DEC 2024	LSGG AD 2 - 30	07 AUG 2025
AD 1.4 - 1	19 MAY 2022	LSZC AD 2.24.7 - 2	26 DEC 2024	LSGG AD 2 - 31	07 AUG 2025
AD 1.4 - 2	19 MAY 2022	LSZC AD 2.24.9 - 1	26 DEC 2024	LSGG AD 2 - 32	07 AUG 2025
AD 1.5 - 1	19 MAY 2022	LSZC AD 2.24.9 - 2	26 DEC 2024	LSGG AD 2 - 33	07 AUG 2025
AD 1.5 - 2	19 MAY 2022	LSZC AD 2.24.10 - 1	AIRAC 20 MAR 2025	LSGG AD 2 - 34	07 AUG 2025
LSZB AD 2 - 1	30 OCT 2025	LSZC AD 2.24.10 - 2	AIRAC 20 MAR 2025	LSGG AD 2 - 35	07 AUG 2025
LSZB AD 2 - 2	30 OCT 2025	LSZC AD 2.24.10 - 3	19 FEB 2026	LSGG AD 2 - 36	07 AUG 2025
LSZB AD 2 - 3	04 SEP 2025	LSZC AD 2.24.10 - 4	19 FEB 2026	LSGG AD 2 - 37	07 AUG 2025
LSZB AD 2 - 4	04 SEP 2025	LSGC AD 2 - 1	AIRAC 30 OCT 2025	LSGG AD 2 - 38	07 AUG 2025
LSZB AD 2 - 5	17 APR 2025	LSGC AD 2 - 2	AIRAC 30 OCT 2025	LSGG AD 2 - 39	07 AUG 2025
LSZB AD 2 - 6	17 APR 2025	LSGC AD 2 - 3	18 APR 2024	LSGG AD 2 - 40	07 AUG 2025
LSZB AD 2 - 7	17 APR 2025	LSGC AD 2 - 4	18 APR 2024	LSGG AD 2 - 41	07 AUG 2025
LSZB AD 2 - 8	17 APR 2025	LSGC AD 2 - 5	20 MAR 2025	LSGG AD 2 - 42	07 AUG 2025
LSZB AD 2 - 9	AIRAC 19 FEB 2026	LSGC AD 2 - 6	20 MAR 2025	LSGG AD 2 - 43	07 AUG 2025
LSZB AD 2 - 10	AIRAC 19 FEB 2026	LSGC AD 2 - 7	AIRAC 31 OCT 2024	LSGG AD 2 - 44	07 AUG 2025
LSZB AD 2 - 11	22 JAN 2026	LSGC AD 2 - 8	AIRAC 31 OCT 2024	LSGG AD 2 - 45	07 AUG 2025
LSZB AD 2 - 12	22 JAN 2026	LSGC AD 2 - 9	AIRAC 31 OCT 2024	LSGG AD 2 - 46	07 AUG 2025
LSZB AD 2 - 13	09 SEP 2021	LSGC AD 2 - 10	AIRAC 31 OCT 2024	LSGG AD 2 - 47	07 AUG 2025
LSZB AD 2 - 14	09 SEP 2021	LSGC AD 2 - 11	AIRAC 30 OCT 2025	LSGG AD 2 - 48	07 AUG 2025
LSZB AD 2 - 15	AIRAC 31 OCT 2024	LSGC AD 2 - 12	AIRAC 30 OCT 2025	LSGG AD 2 - 49	07 AUG 2025
LSZB AD 2 - 16	AIRAC 31 OCT 2024	LSGC AD 2 - 13	AIRAC 30 OCT 2025	LSGG AD 2 - 50	07 AUG 2025
LSZB AD 2 - 17	AIRAC 31 OCT 2024	LSGC AD 2 - 14	AIRAC 30 OCT 2025	LSGG AD 2 - 51	07 AUG 2025
LSZB AD 2 - 18	AIRAC 31 OCT 2024	LSGC AD 2 - 15	AIRAC 30 OCT 2025	LSGG AD 2 - 52	07 AUG 2025
LSZB AD 2 - 19	17 APR 2025	LSGC AD 2 - 16	AIRAC 30 OCT 2025	LSGG AD 2.24.1 - 1	27 NOV 2025
LSZB AD 2 - 20	17 APR 2025	LSGC AD 2.24.1 - 1	23 JAN 2025	LSGG AD 2.24.1 - 2	27 NOV 2025
LSZB AD 2.24.1 - 1	17 APR 2025	LSGC AD 2.24.1 - 2	23 JAN 2025	LSGG AD 2.24.2 - 1	27 NOV 2025
LSZB AD 2.24.1 - 2	17 APR 2025	LSGC AD 2.24.2 - 1	23 JAN 2025	LSGG AD 2.24.2 - 2	27 NOV 2025
LSZB AD 2.24.2 - 1	AIRAC 20 FEB 2025	LSGC AD 2.24.2 - 2	23 JAN 2025	LSGG AD 2.24.3 - 1	20 FEB 2025
LSZB AD 2.24.2 - 2	AIRAC 20 FEB 2025	LSGC AD 2.24.4 - 1	23 JAN 2025	LSGG AD 2.24.3 - 2	20 FEB 2025
LSZB AD 2.24.4 - 1	17 APR 2025	LSGC AD 2.24.4 - 2	23 JAN 2025	LSGG AD 2.24.3 - 3	12 JUN 2025
LSZB AD 2.24.4 - 2	17 APR 2025	LSGC AD 2.24.7 - 1	AIRAC 30 OCT 2025	LSGG AD 2.24.3 - 4	12 JUN 2025
LSZB AD 2.24.4 - 3	AIRAC 20 FEB 2025	LSGC AD 2.24.7 - 2	AIRAC 30 OCT 2025	LSGG AD 2.24.4 - 1	20 FEB 2025

Page	Date	Page	Date	Page	Date
LSGG AD 2.24.4 - 2	20 FEB 2025	LSZG AD 2.24.7 - 5	AIRAC 12 JUN 2025	LSMP AD 2.24.4 - 2	23 JAN 2025
LSGG AD 2.24.4 - 3	20 FEB 2025	LSZG AD 2.24.7 - 6	AIRAC 12 JUN 2025	LSMP AD 2.24.4 - 3	23 JAN 2025
LSGG AD 2.24.4 - 4	20 FEB 2025	LSZG AD 2.24.7 - 7	AIRAC 12 JUN 2025	LSMP AD 2.24.4 - 4	23 JAN 2025
LSGG AD 2.24.5 - 1	20 FEB 2025	LSZG AD 2.24.7 - 8	AIRAC 12 JUN 2025	LSMP AD 2.24.7 - 1	23 JAN 2025
LSGG AD 2.24.5 - 2	20 FEB 2025	LSZG AD 2.24.10 - 1	AIRAC 12 JUN 2025	LSMP AD 2.24.7 - 2	23 JAN 2025
LSGG AD 2.24.6 - 1	20 FEB 2025	LSZG AD 2.24.10 - 2	AIRAC 12 JUN 2025	LSMP AD 2.24.9 - 1	23 JAN 2025
LSGG AD 2.24.6 - 2	20 FEB 2025	LSZA AD 2 - 1	12 JUN 2025	LSMP AD 2.24.9 - 2	23 JAN 2025
LSGG AD 2.24.6 - 3	20 FEB 2025	LSZA AD 2 - 2	12 JUN 2025	LSMP AD 2.24.10 - 1	23 JAN 2025
LSGG AD 2.24.6 - 4	20 FEB 2025	LSZA AD 2 - 3	28 NOV 2024	LSMP AD 2.24.10 - 2	23 JAN 2025
LSGG AD 2.24.7 - 1	20 FEB 2025	LSZA AD 2 - 4	28 NOV 2024	LSMP AD 2.24.10 - 3	23 JAN 2025
LSGG AD 2.24.7 - 2	20 FEB 2025	LSZA AD 2 - 5	20 MAR 2025	LSMP AD 2.24.10 - 4	23 JAN 2025
LSGG AD 2.24.7 - 3	20 FEB 2025	LSZA AD 2 - 6	20 MAR 2025	LSMP AD 2.24.10 - 5	23 JAN 2025
LSGG AD 2.24.7 - 4	20 FEB 2025	LSZA AD 2 - 7	20 MAR 2025	LSMP AD 2.24.10 - 6	23 JAN 2025
LSGG AD 2.24.7 - 5	20 FEB 2025	LSZA AD 2 - 8	20 MAR 2025	LSZR AD 2 - 1	07 AUG 2025
LSGG AD 2.24.7 - 6	20 FEB 2025	LSZA AD 2 - 9	15 MAY 2025	LSZR AD 2 - 2	07 AUG 2025
LSGG AD 2.24.7 - 7	20 FEB 2025	LSZA AD 2 - 10	15 MAY 2025	LSZR AD 2 - 3	07 AUG 2025
LSGG AD 2.24.7 - 8	20 FEB 2025	LSZA AD 2 - 11	15 MAY 2025	LSZR AD 2 - 4	07 AUG 2025
LSGG AD 2.24.9 - 1	20 FEB 2025	LSZA AD 2 - 12	15 MAY 2025	LSZR AD 2 - 5	28 NOV 2024
LSGG AD 2.24.9 - 2	20 FEB 2025	LSZA AD 2 - 13	AIRAC 08 AUG 2024	LSZR AD 2 - 6	28 NOV 2024
LSGG AD 2.24.9 - 3	20 FEB 2025	LSZA AD 2 - 14	AIRAC 08 AUG 2024	LSZR AD 2 - 7	19 FEB 2026
LSGG AD 2.24.9 - 4	20 FEB 2025	LSZA AD 2 - 15	12 JUN 2025	LSZR AD 2 - 8	19 FEB 2026
LSGG AD 2.24.9 - 5	20 FEB 2025	LSZA AD 2 - 16	12 JUN 2025	LSZR AD 2 - 9	AIRAC 19 FEB 2026
LSGG AD 2.24.9 - 6	20 FEB 2025	LSZA AD 2 - 17	12 JUN 2025	LSZR AD 2 - 10	AIRAC 19 FEB 2026
LSGG AD 2.24.9 - 7	20 FEB 2025	LSZA AD 2 - 18	12 JUN 2025	LSZR AD 2 - 11	20 MAY 2021
LSGG AD 2.24.9 - 8	20 FEB 2025	LSZA AD 2 - 19	12 JUN 2025	LSZR AD 2 - 12	20 MAY 2021
LSGG AD 2.24.9 - 9	20 FEB 2025	LSZA AD 2 - 20	12 JUN 2025	LSZR AD 2 - 13	20 MAY 2021
LSGG AD 2.24.9 - 10	20 FEB 2025	LSZA AD 2 - 21	17 APR 2025	LSZR AD 2 - 14	20 MAY 2021
LSGG AD 2.24.9 - 11	20 FEB 2025	LSZA AD 2 - 22	17 APR 2025	LSZR AD 2 - 15	20 MAY 2021
LSGG AD 2.24.9 - 12	20 FEB 2025	LSZA AD 2.24.1 - 1	23 JAN 2025	LSZR AD 2 - 16	20 MAY 2021
LSGG AD 2.24.10 - 1	20 FEB 2025	LSZA AD 2.24.1 - 2	23 JAN 2025	LSZR AD 2 - 17	AIRAC 05 OCT 2023
LSGG AD 2.24.10 - 2	20 FEB 2025	LSZA AD 2.24.2 - 1	07 AUG 2025	LSZR AD 2 - 18	AIRAC 05 OCT 2023
LSGG AD 2.24.10 - 3	20 FEB 2025	LSZA AD 2.24.2 - 2	07 AUG 2025	LSZR AD 2 - 19	17 APR 2025
LSGG AD 2.24.10 - 4	20 FEB 2025	LSZA AD 2.24.4 - 1	23 JAN 2025	LSZR AD 2 - 20	17 APR 2025
LSGG AD 2.24.10 - 5	20 FEB 2025	LSZA AD 2.24.4 - 2	23 JAN 2025	LSZR AD 2.24.1 - 1	07 AUG 2025
LSGG AD 2.24.10 - 6	20 FEB 2025	LSZA AD 2.24.4 - 3	23 JAN 2025	LSZR AD 2.24.1 - 2	07 AUG 2025
LSGG AD 2.24.10 - 7	20 FEB 2025	LSZA AD 2.24.4 - 4	23 JAN 2025	LSZR AD 2.24.4 - 1	26 DEC 2024
LSGG AD 2.24.10 - 8	20 FEB 2025	LSZA AD 2.24.7 - 1	23 JAN 2025	LSZR AD 2.24.4 - 2	26 DEC 2024
LSGG AD 2.24.13 - 1	20 FEB 2025	LSZA AD 2.24.7 - 2	23 JAN 2025	LSZR AD 2.24.7 - 1	26 DEC 2024
LSGG AD 2.24.13 - 2	20 FEB 2025	LSZA AD 2.24.7 - 3	23 JAN 2025	LSZR AD 2.24.7 - 2	26 DEC 2024
LSGG AD 2.24.13 - 3	20 FEB 2025	LSZA AD 2.24.7 - 4	23 JAN 2025	LSZR AD 2.24.7 - 3	26 DEC 2024
LSGG AD 2.24.13 - 4	20 FEB 2025	LSZA AD 2.24.7 - 5	23 JAN 2025	LSZR AD 2.24.7 - 4	26 DEC 2024
LSZG AD 2 - 1	AIRAC 12 JUN 2025	LSZA AD 2.24.7 - 6	23 JAN 2025	LSZR AD 2.24.7 - 5	23 JAN 2025
LSZG AD 2 - 2	AIRAC 12 JUN 2025	LSZA AD 2.24.9 - 1	23 JAN 2025	LSZR AD 2.24.7 - 6	23 JAN 2025
LSZG AD 2 - 3	AIRAC 12 JUN 2025	LSZA AD 2.24.9 - 2	23 JAN 2025	LSZR AD 2.24.7 - 7	26 DEC 2024
LSZG AD 2 - 4	AIRAC 12 JUN 2025	LSZA AD 2.24.10 - 1	23 JAN 2025	LSZR AD 2.24.7 - 8	26 DEC 2024
LSZG AD 2 - 5	AIRAC 27 NOV 2025	LSZA AD 2.24.10 - 2	23 JAN 2025	LSZR AD 2.24.7 - 9	26 DEC 2024
LSZG AD 2 - 6	AIRAC 27 NOV 2025	LSZA AD 2.24.10 - 3	23 JAN 2025	LSZR AD 2.24.7 - 10	26 DEC 2024
LSZG AD 2 - 7	AIRAC 19 FEB 2026	LSZA AD 2.24.10 - 4	23 JAN 2025	LSZR AD 2.24.7 - 11	26 DEC 2024
LSZG AD 2 - 8	AIRAC 19 FEB 2026	LSZA AD 2.24.10 - 5	22 JAN 2026	LSZR AD 2.24.7 - 12	26 DEC 2024
LSZG AD 2 - 9	AIRAC 12 JUN 2025	LSZA AD 2.24.10 - 6	22 JAN 2026	LSZR AD 2.24.9 - 1	26 DEC 2024
LSZG AD 2 - 10	AIRAC 12 JUN 2025	LSZA AD 2.24.10 - 7	22 JAN 2026	LSZR AD 2.24.9 - 2	26 DEC 2024
LSZG AD 2 - 11	AIRAC 12 JUN 2025	LSZA AD 2.24.10 - 8	22 JAN 2026	LSZR AD 2.24.9 - 3	26 DEC 2024
LSZG AD 2 - 12	AIRAC 12 JUN 2025	LSMP AD 2 - 1	26 DEC 2024	LSZR AD 2.24.9 - 4	26 DEC 2024
LSZG AD 2 - 13	AIRAC 12 JUN 2025	LSMP AD 2 - 2	26 DEC 2024	LSZR AD 2.24.9 - 5	26 DEC 2024
LSZG AD 2 - 14	AIRAC 12 JUN 2025	LSMP AD 2 - 3	02 OCT 2025	LSZR AD 2.24.9 - 6	26 DEC 2024
LSZG AD 2 - 15	17 APR 2025	LSMP AD 2 - 4	02 OCT 2025	LSZR AD 2.24.10 - 1	23 JAN 2025
LSZG AD 2 - 16	17 APR 2025	LSMP AD 2 - 5	14 JUL 2022	LSZR AD 2.24.10 - 2	23 JAN 2025
LSZG AD 2.24.1 - 1	19 FEB 2026	LSMP AD 2 - 6	14 JUL 2022	LSZR AD 2.24.10 - 3	23 JAN 2025
LSZG AD 2.24.1 - 2	19 FEB 2026	LSMP AD 2 - 7	02 OCT 2025	LSZR AD 2.24.10 - 4	23 JAN 2025
LSZG AD 2.24.1 - 3	19 FEB 2026	LSMP AD 2 - 8	02 OCT 2025	LSZR AD 2.24.10 - 5	23 JAN 2025
LSZG AD 2.24.1 - 4	19 FEB 2026	LSMP AD 2 - 9	02 OCT 2025	LSZR AD 2.24.10 - 6	23 JAN 2025
LSZG AD 2.24.2 - 1	17 APR 2025	LSMP AD 2 - 10	02 OCT 2025	LSZR AD 2.24.13 - 1	AIRAC 20 MAR 2025
LSZG AD 2.24.2 - 2	17 APR 2025	LSMP AD 2 - 11	AIRAC 31 OCT 2024	LSZR AD 2.24.13 - 2	AIRAC 20 MAR 2025
LSZG AD 2.24.2 - 3	17 APR 2025	LSMP AD 2 - 12	AIRAC 31 OCT 2024	LSZS AD 2 - 1	05 SEP 2024
LSZG AD 2.24.2 - 4	17 APR 2025	LSMP AD 2 - 13	AIRAC 31 OCT 2024	LSZS AD 2 - 2	05 SEP 2024
LSZG AD 2.24.4 - 1	AIRAC 12 JUN 2025	LSMP AD 2 - 14	AIRAC 31 OCT 2024	LSZS AD 2 - 3	28 NOV 2024
LSZG AD 2.24.4 - 2	AIRAC 12 JUN 2025	LSMP AD 2 - 15	02 OCT 2025	LSZS AD 2 - 4	28 NOV 2024
LSZG AD 2.24.7 - 1	AIRAC 12 JUN 2025	LSMP AD 2 - 16	02 OCT 2025	LSZS AD 2 - 5	20 MAR 2025
LSZG AD 2.24.7 - 2	AIRAC 12 JUN 2025	LSMP AD 2.24.1 - 1	02 OCT 2025	LSZS AD 2 - 6	20 MAR 2025
LSZG AD 2.24.7 - 3	AIRAC 12 JUN 2025	LSMP AD 2.24.1 - 2	02 OCT 2025	LSZS AD 2 - 7	05 SEP 2024
LSZG AD 2.24.7 - 4	AIRAC 12 JUN 2025	LSMP AD 2.24.4 - 1	23 JAN 2025	LSZS AD 2 - 8	05 SEP 2024

Page	Date	Page	Date	Page	Date
LSZS AD 2 - 9	AIRAC 23 JAN 2025	LSGS AD 2.24.13 - 4	23 JAN 2025	LSZH AD 2 - 71	AIRAC 19 FEB 2026
LSZS AD 2 - 10	AIRAC 23 JAN 2025	LSZH AD 2 - 1	AIRAC 08 AUG 2024	LSZH AD 2 - 72	AIRAC 19 FEB 2026
LSZS AD 2 - 11	28 DEC 2023	LSZH AD 2 - 2	AIRAC 08 AUG 2024	LSZH AD 2 - 73	AIRAC 19 FEB 2026
LSZS AD 2 - 12	28 DEC 2023	LSZH AD 2 - 3	22 JAN 2026	LSZH AD 2 - 74	AIRAC 19 FEB 2026
LSZS AD 2 - 13	17 APR 2025	LSZH AD 2 - 4	22 JAN 2026	LSZH AD 2 - 75	AIRAC 19 FEB 2026
LSZS AD 2 - 14	17 APR 2025	LSZH AD 2 - 5	22 JAN 2026	LSZH AD 2 - 76	AIRAC 19 FEB 2026
LSZS AD 2.24.1 - 1	19 FEB 2026	LSZH AD 2 - 6	22 JAN 2026	LSZH AD 2.24.1 - 1	22 JAN 2026
LSZS AD 2.24.1 - 2	19 FEB 2026	LSZH AD 2 - 7	07 AUG 2025	LSZH AD 2.24.1 - 2	22 JAN 2026
LSZS AD 2.24.4 - 1	20 FEB 2025	LSZH AD 2 - 8	07 AUG 2025	LSZH AD 2.24.3 - 1	22 JAN 2026
LSZS AD 2.24.4 - 2	20 FEB 2025	LSZH AD 2 - 9	07 AUG 2025	LSZH AD 2.24.3 - 2	22 JAN 2026
LSZS AD 2.24.4 - 3	20 FEB 2025	LSZH AD 2 - 10	07 AUG 2025	LSZH AD 2.24.3 - 3	22 JAN 2026
LSZS AD 2.24.4 - 4	20 FEB 2025	LSZH AD 2 - 11	07 AUG 2025	LSZH AD 2.24.3 - 4	22 JAN 2026
LSZS AD 2.24.7 - 1	20 FEB 2025	LSZH AD 2 - 12	07 AUG 2025	LSZH AD 2.24.3 - 5	22 JAN 2026
LSZS AD 2.24.7 - 2	20 FEB 2025	LSZH AD 2 - 13	07 AUG 2025	LSZH AD 2.24.3 - 6	22 JAN 2026
LSZS AD 2.24.7 - 3	20 FEB 2025	LSZH AD 2 - 14	07 AUG 2025	LSZH AD 2.24.4 - 1	AIRAC 20 MAR 2025
LSZS AD 2.24.7 - 4	20 FEB 2025	LSZH AD 2 - 15	07 AUG 2025	LSZH AD 2.24.4 - 2	AIRAC 20 MAR 2025
LSZS AD 2.24.7 - 5	20 FEB 2025	LSZH AD 2 - 16	07 AUG 2025	LSZH AD 2.24.4 - 3	AIRAC 20 MAR 2025
LSZS AD 2.24.7 - 6	20 FEB 2025	LSZH AD 2 - 17	AIRAC 19 FEB 2026	LSZH AD 2.24.4 - 4	AIRAC 20 MAR 2025
LSZS AD 2.24.7 - 7	20 FEB 2025	LSZH AD 2 - 18	AIRAC 19 FEB 2026	LSZH AD 2.24.4 - 5	AIRAC 20 MAR 2025
LSZS AD 2.24.7 - 8	20 FEB 2025	LSZH AD 2 - 19	AIRAC 19 FEB 2026	LSZH AD 2.24.4 - 6	AIRAC 20 MAR 2025
LSZS AD 2.24.10 - 1	20 FEB 2025	LSZH AD 2 - 20	AIRAC 19 FEB 2026	LSZH AD 2.24.4 - 7	AIRAC 20 MAR 2025
LSZS AD 2.24.10 - 2	20 FEB 2025	LSZH AD 2 - 21	07 AUG 2025	LSZH AD 2.24.4 - 8	AIRAC 20 MAR 2025
LSZS AD 2.24.10 - 3	20 FEB 2025	LSZH AD 2 - 22	07 AUG 2025	LSZH AD 2.24.4 - 9	AIRAC 20 MAR 2025
LSZS AD 2.24.10 - 4	20 FEB 2025	LSZH AD 2 - 23	07 AUG 2025	LSZH AD 2.24.4 - 10	AIRAC 20 MAR 2025
LSZS AD 2.24.11 - 1	19 FEB 2026	LSZH AD 2 - 24	07 AUG 2025	LSZH AD 2.24.4 - 11	15 MAY 2025
LSZS AD 2.24.11 - 2	19 FEB 2026	LSZH AD 2 - 25	07 AUG 2025	LSZH AD 2.24.4 - 12	15 MAY 2025
LSZS AD 2.24.12 - 1	17 APR 2025	LSZH AD 2 - 26	07 AUG 2025	LSZH AD 2.24.5 - 1	AIRAC 20 MAR 2025
LSZS AD 2.24.12 - 2	17 APR 2025	LSZH AD 2 - 27	07 AUG 2025	LSZH AD 2.24.5 - 2	AIRAC 20 MAR 2025
LSGS AD 2 - 1	17 APR 2025	LSZH AD 2 - 28	07 AUG 2025	LSZH AD 2.24.5 - 3	AIRAC 20 MAR 2025
LSGS AD 2 - 2	17 APR 2025	LSZH AD 2 - 29	07 AUG 2025	LSZH AD 2.24.5 - 4	AIRAC 20 MAR 2025
LSGS AD 2 - 3	19 FEB 2026	LSZH AD 2 - 30	07 AUG 2025	LSZH AD 2.24.6 - 1	AIRAC 20 MAR 2025
LSGS AD 2 - 4	19 FEB 2026	LSZH AD 2 - 31	07 AUG 2025	LSZH AD 2.24.6 - 2	AIRAC 20 MAR 2025
LSGS AD 2 - 5	28 NOV 2024	LSZH AD 2 - 32	07 AUG 2025	LSZH AD 2.24.6 - 3	AIRAC 20 MAR 2025
LSGS AD 2 - 6	28 NOV 2024	LSZH AD 2 - 33	04 SEP 2025	LSZH AD 2.24.6 - 4	AIRAC 20 MAR 2025
LSGS AD 2 - 7	13 JUN 2024	LSZH AD 2 - 34	04 SEP 2025	LSZH AD 2.24.7.1 - 1	AIRAC 20 MAR 2025
LSGS AD 2 - 8	13 JUN 2024	LSZH AD 2 - 35	07 AUG 2025	LSZH AD 2.24.7.1 - 2	AIRAC 20 MAR 2025
LSGS AD 2 - 9	AIRAC 19 FEB 2026	LSZH AD 2 - 36	07 AUG 2025	LSZH AD 2.24.7.1 - 3	AIRAC 20 MAR 2025
LSGS AD 2 - 10	AIRAC 19 FEB 2026	LSZH AD 2 - 37	07 AUG 2025	LSZH AD 2.24.7.1 - 4	AIRAC 20 MAR 2025
LSGS AD 2 - 11	AIRAC 13 JUN 2024	LSZH AD 2 - 38	07 AUG 2025	LSZH AD 2.24.7.1 - 5	AIRAC 20 MAR 2025
LSGS AD 2 - 12	AIRAC 13 JUN 2024	LSZH AD 2 - 39	07 AUG 2025	LSZH AD 2.24.7.1 - 6	AIRAC 20 MAR 2025
LSGS AD 2 - 13	AIRAC 31 OCT 2024	LSZH AD 2 - 40	07 AUG 2025	LSZH AD 2.24.7.2 - 1	AIRAC 20 MAR 2025
LSGS AD 2 - 14	AIRAC 31 OCT 2024	LSZH AD 2 - 41	27 NOV 2025	LSZH AD 2.24.7.2 - 2	AIRAC 20 MAR 2025
LSGS AD 2 - 15	AIRAC 31 OCT 2024	LSZH AD 2 - 42	27 NOV 2025	LSZH AD 2.24.7.2 - 3	AIRAC 20 MAR 2025
LSGS AD 2 - 16	AIRAC 31 OCT 2024	LSZH AD 2 - 43	AIRAC 22 JAN 2026	LSZH AD 2.24.7.2 - 4	AIRAC 20 MAR 2025
LSGS AD 2 - 17	AIRAC 13 JUN 2024	LSZH AD 2 - 44	AIRAC 22 JAN 2026	LSZH AD 2.24.7.2 - 5	AIRAC 20 MAR 2025
LSGS AD 2 - 18	AIRAC 13 JUN 2024	LSZH AD 2 - 45	AIRAC 22 JAN 2026	LSZH AD 2.24.7.2 - 6	AIRAC 20 MAR 2025
LSGS AD 2 - 19	AIRAC 13 JUN 2024	LSZH AD 2 - 46	AIRAC 22 JAN 2026	LSZH AD 2.24.7.2 - 7	AIRAC 20 MAR 2025
LSGS AD 2 - 20	AIRAC 13 JUN 2024	LSZH AD 2 - 47	07 AUG 2025	LSZH AD 2.24.7.2 - 8	AIRAC 20 MAR 2025
LSGS AD 2 - 21	17 APR 2025	LSZH AD 2 - 48	07 AUG 2025	LSZH AD 2.24.7.3 - 1	AIRAC 20 MAR 2025
LSGS AD 2 - 22	17 APR 2025	LSZH AD 2 - 49	07 AUG 2025	LSZH AD 2.24.7.3 - 2	AIRAC 20 MAR 2025
LSGS AD 2.24.1 - 1	19 FEB 2026	LSZH AD 2 - 50	07 AUG 2025	LSZH AD 2.24.7.3 - 3	AIRAC 22 JAN 2026
LSGS AD 2.24.1 - 2	19 FEB 2026	LSZH AD 2 - 51	07 AUG 2025	LSZH AD 2.24.7.3 - 4	AIRAC 22 JAN 2026
LSGS AD 2.24.2 - 1	19 FEB 2026	LSZH AD 2 - 52	07 AUG 2025	LSZH AD 2.24.7.3 - 5	AIRAC 20 MAR 2025
LSGS AD 2.24.2 - 2	19 FEB 2026	LSZH AD 2 - 53	07 AUG 2025	LSZH AD 2.24.7.3 - 6	AIRAC 20 MAR 2025
LSGS AD 2.24.4 - 1	23 JAN 2025	LSZH AD 2 - 54	07 AUG 2025	LSZH AD 2.24.7.3 - 7	AIRAC 22 JAN 2026
LSGS AD 2.24.4 - 2	23 JAN 2025	LSZH AD 2 - 55	07 AUG 2025	LSZH AD 2.24.7.3 - 8	AIRAC 22 JAN 2026
LSGS AD 2.24.7 - 1	23 JAN 2025	LSZH AD 2 - 56	07 AUG 2025	LSZH AD 2.24.7.3 - 9	AIRAC 20 MAR 2025
LSGS AD 2.24.7 - 2	23 JAN 2025	LSZH AD 2 - 57	07 AUG 2025	LSZH AD 2.24.7.3 - 10	AIRAC 20 MAR 2025
LSGS AD 2.24.7 - 3	23 JAN 2025	LSZH AD 2 - 58	07 AUG 2025	LSZH AD 2.24.7.4 - 1	AIRAC 12 JUN 2025
LSGS AD 2.24.7 - 4	23 JAN 2025	LSZH AD 2 - 59	AIRAC 19 FEB 2026	LSZH AD 2.24.7.4 - 2	AIRAC 12 JUN 2025
LSGS AD 2.24.9 - 1	23 JAN 2025	LSZH AD 2 - 60	AIRAC 19 FEB 2026	LSZH AD 2.24.7.4 - 3	27 NOV 2025
LSGS AD 2.24.9 - 2	23 JAN 2025	LSZH AD 2 - 61	AIRAC 19 FEB 2026	LSZH AD 2.24.7.4 - 4	27 NOV 2025
LSGS AD 2.24.10 - 1	23 JAN 2025	LSZH AD 2 - 62	AIRAC 19 FEB 2026	LSZH AD 2.24.7.4 - 5	AIRAC 12 JUN 2025
LSGS AD 2.24.10 - 2	23 JAN 2025	LSZH AD 2 - 63	AIRAC 19 FEB 2026	LSZH AD 2.24.7.4 - 6	AIRAC 12 JUN 2025
LSGS AD 2.24.10 - 3	23 JAN 2025	LSZH AD 2 - 64	AIRAC 19 FEB 2026	LSZH AD 2.24.7.4 - 7	AIRAC 12 JUN 2025
LSGS AD 2.24.10 - 4	23 JAN 2025	LSZH AD 2 - 65	AIRAC 19 FEB 2026	LSZH AD 2.24.7.4 - 8	AIRAC 12 JUN 2025
LSGS AD 2.24.10 - 5	23 JAN 2025	LSZH AD 2 - 66	AIRAC 19 FEB 2026	LSZH AD 2.24.7.5 - 1	AIRAC 12 JUN 2025
LSGS AD 2.24.10 - 6	23 JAN 2025	LSZH AD 2 - 67	AIRAC 19 FEB 2026	LSZH AD 2.24.7.5 - 2	AIRAC 12 JUN 2025
LSGS AD 2.24.13 - 1	23 JAN 2025	LSZH AD 2 - 68	AIRAC 19 FEB 2026	LSZH AD 2.24.7.5 - 3	AIRAC 12 JUN 2025
LSGS AD 2.24.13 - 2	23 JAN 2025	LSZH AD 2 - 69	AIRAC 19 FEB 2026	LSZH AD 2.24.7.5 - 4	AIRAC 12 JUN 2025
LSGS AD 2.24.13 - 3	23 JAN 2025	LSZH AD 2 - 70	AIRAC 19 FEB 2026	LSZH AD 2.24.7.5 - 5	27 NOV 2025

Page	Date	Page	Date	Page	Date
LSZH AD 2.24.7.5 - 6	27 NOV 2025				
LSZH AD 2.24.7.5 - 7	AIRAC 12 JUN 2025				
LSZH AD 2.24.7.5 - 8	AIRAC 12 JUN 2025				
LSZH AD 2.24.7.5 - 9	AIRAC 12 JUN 2025				
LSZH AD 2.24.7.5 - 10	AIRAC 12 JUN 2025				
LSZH AD 2.24.7.6 - 1	AIRAC 20 MAR 2025				
LSZH AD 2.24.7.6 - 2	AIRAC 20 MAR 2025				
LSZH AD 2.24.9.1 - 1	AIRAC 20 MAR 2025				
LSZH AD 2.24.9.1 - 2	AIRAC 20 MAR 2025				
LSZH AD 2.24.9.2 - 1	AIRAC 20 MAR 2025				
LSZH AD 2.24.9.2 - 2	AIRAC 20 MAR 2025				
LSZH AD 2.24.9.3 - 1	AIRAC 20 MAR 2025				
LSZH AD 2.24.9.3 - 2	AIRAC 20 MAR 2025				
LSZH AD 2.24.10.1 - 1	AIRAC 20 MAR 2025				
LSZH AD 2.24.10.1 - 2	AIRAC 20 MAR 2025				
LSZH AD 2.24.10.1 - 3	AIRAC 20 MAR 2025				
LSZH AD 2.24.10.1 - 4	AIRAC 20 MAR 2025				
LSZH AD 2.24.10.1 - 5	AIRAC 20 MAR 2025				
LSZH AD 2.24.10.1 - 6	AIRAC 20 MAR 2025				
LSZH AD 2.24.10.1 - 7	AIRAC 20 MAR 2025				
LSZH AD 2.24.10.1 - 8	AIRAC 20 MAR 2025				
LSZH AD 2.24.10.1 - 9	AIRAC 20 MAR 2025				
LSZH AD 2.24.10.1 - 10	AIRAC 20 MAR 2025				
LSZH AD 2.24.10.2 - 1	AIRAC 20 MAR 2025				
LSZH AD 2.24.10.2 - 2	AIRAC 20 MAR 2025				
LSZH AD 2.24.10.2 - 3	AIRAC 20 MAR 2025				
LSZH AD 2.24.10.2 - 4	AIRAC 20 MAR 2025				
LSZH AD 2.24.10.2 - 5	AIRAC 20 MAR 2025				
LSZH AD 2.24.10.2 - 6	AIRAC 20 MAR 2025				
LSZH AD 2.24.10.3 - 1	AIRAC 20 MAR 2025				
LSZH AD 2.24.10.3 - 2	AIRAC 20 MAR 2025				
LSZH AD 2.24.10.3 - 3	AIRAC 20 MAR 2025				
LSZH AD 2.24.10.3 - 4	AIRAC 20 MAR 2025				
LSZH AD 2.24.10.3 - 5	AIRAC 20 MAR 2025				
LSZH AD 2.24.10.3 - 6	AIRAC 20 MAR 2025				
LSZH AD 2.24.10.3 - 7	AIRAC 20 MAR 2025				
LSZH AD 2.24.10.3 - 8	AIRAC 20 MAR 2025				
LSZH AD 2.24.10.4 - 1	AIRAC 19 FEB 2026				
LSZH AD 2.24.10.4 - 2	AIRAC 19 FEB 2026				
LSZH AD 2.24.10.4 - 3	AIRAC 19 FEB 2026				
LSZH AD 2.24.10.4 - 4	AIRAC 19 FEB 2026				
LSZH AD 2.24.10.4 - 5	AIRAC 19 FEB 2026				
LSZH AD 2.24.10.4 - 6	AIRAC 19 FEB 2026				
LSZH AD 2.24.13 - 1	AIRAC 20 MAR 2025				
LSZH AD 2.24.13 - 2	AIRAC 20 MAR 2025				

THIS PAGE INTENTIONALLY LEFT BLANK

## GEN 4.2 AIR NAVIGATION SERVICES CHARGES

### 1. EN ROUTE AIR NAVIGATION SERVICES

#### 1.1 Principles

The main following principles apply:

- The Swiss FIR constitutes a single charging zone
- A single unit rate is set per charging zone
- Charges take the DIST flown and the MTOM of the ACFT into account
- Charges have to be paid by the ACFT operator. If the ACFT operator is unknown, the ACFT owner is the debtor of the charge
- In case of non payment of the charges by the debtor, air navigation services may be denied

As signatory of the Multilateral Agreement of 12 FEB 1981 relating to air navigation route charges, Switzerland is a member of the EUROCONTROL Organization and thus applies all related rules. Of particular interest for the user are the Conditions of application of the route charges system and conditions of payment which are AVBL on the following web site:

URL: <http://www.eurocontrol.int/articles/reference-documents>

The detailed principles applied also are set by the Federal Ordinance on air navigation services which is AVBL in the Swiss official languages on the following web site:

URL: <http://www.admin.ch/ch/f/rs/rs.html>

#### 1.2 En route charges

The Swiss unit rate is set up in Swiss francs and is recalculated monthly in Euros by applying the average monthly exchange rate between the Euros and the national currency for the month preceding the month during which the FLT takes place.

The Swiss tariff is AVBL on following web site:

URL: <http://www.eurocontrol.int/services/monthly-adjusted-unit-rates>

It is composed of a national unit rate to finance national air navigation services and of a regional administrative unit rate to finance the central billing and collection of charges at the EUROCONTROL level.

The exchange rate applied shall be that published in the Official Journal of the European Communities (Information and Notices). Where not indicated in the Official Journal, the exchange rate shall be calculated by reference on the one hand to the rate of exchange between the Euro and the dollar of the United States of America and, on the other hand, to the rate of exchange between the national currency concerned and the dollar of the United States of America as published by the International Monetary Fund in its "International Financial Statistics".

The data for the calculation of the charges are derived from the flight plan. Flight plans should therefore be CMPL in strict accordance with ICAO instructions.

With regard to the conditions of payment of route charges the interest rate on late payment of route charges is published on Eurocontrol circulars:

URL: <http://www.eurocontrol.int/articles/information-circulars>

#### Exempt flights

The following FLTs are exempt from ENR charges:

- FLTs performed by ACFT of which the MTOM authorised is less than two metric tonnes
- Mixed VFR/IFR FLTs in the charging zones where they are performed exclusively under VFR and where a charge is not levied for VFR FLTs
- FLTs performed exclusively for the transport, on official mission, of the reigning Monarch and his immediate family, Heads of State, Heads of Government, and Government Ministers; in all cases, the exemption must be substantiated by the appropriate status indicator or remark on the flight plan
- SAR FLTs authorised in accordance with the related Federal Ordinance
- FLTs performed exclusively for the purpose of checking or testing equipment used or intended to be used as ground aids to air navigation, excluding positioning FLTs by the ACFT concerned
- VFR FLTs
- With the agreement of the Federal Department of Foreign Affairs and of the Swiss Air Force, FOCA exempts foreign MIL FLTs from route charges, on request of the concerned State and under the conditions of reciprocity
- Humanitarian FLTs

### 1.3 Billing and collection of route charges

FOCA has entrusted the EUROCONTROL Organisation with the billing and collection of the charges.

Post: EUROCONTROL  
Central route charges office  
Rue de la Fusée 96  
B-1130 Brussels  
Phone: +32 (0) 2 729 38 13  
Fax: +32 (0) 2 729 90 93  
Email: r3.crc@eurocontrol.int

Information concerning the billing and collection of ENR charges may be obtained from the above mentioned office.

## 2. CATEGORY I APPROACH AIR NAVIGATION SERVICES

### 2.1 Principles

The main following principles apply:

- A single unit rate is set per charging zone
- One charge is billed for each APCH
- Charges take the MTOM of ACFT into account
- Charges have to be paid by the ACFT operator. If the ACFT operator is unknown, the ACFT owner is the debtor of the charge
- In case of non payment of the charges by the debtor, air navigation services may be denied

One charging zone is defined:

- Category I encompasses the ADs of Geneva and Zurich

The detailed principles applied are set by the Federal Ordinance on air navigation services which is AVBL in the Swiss official languages on the following web site:

URL: <http://www.admin.ch/ch/fr/rs/rs.html>

### 2.2 Category I charges (Zurich and Geneva)

Valid charges per APCH (VAT excl.) are AVBL in [ANNEX 1: Approach charges for aerodromes of category I](#).

For information, they are calculated using following formula:

Unit rate x  $((\text{MTOM}/50)^{0.7})$  and following unit rate: CHF 530.41

A set charge per MTOM in tonnes is applied to ACFT under 4.999 tonnes. The formula mentioned above is thus not applied for these FLT's.

#### VFR training flights

A set charge per MTOM is applied for VFR training FLT's under 29.999 tonnes LDG in Geneva. Beyond this MTOM, in Geneva, normal charges apply. In Zurich, normal charges apply for all training FLT's.

For the purpose of fees and charges only, a reduced fee is granted to VFR training FLT's that meet the following conditions:

- the FLT must be performed within a course, the aim of which it is to obtain a pilot's or an instructor's rating;
- it must be a VFR FLT;
- it must be attended or supervised by a FLT instructor or an inspector certified by FOCA and a student;
- training FLT's within the AD circuit are treated as such provided that the AP offers reduced LDG charges for these FLT's;
- training FLT's are not commercial FLT's as defined by aviation law, and are not to be used for the purpose of the carriage of passengers or goods.

VFR FLT's to obtain a certification on specific APCH procedures are considered as VFR training FLT's.

Within a FLT school organisation or a FLT club, only the FLT's matching the above mentioned criteria are entitled to a reduced fee.

The following FLT's are not considered to be training FLT's:

- FLT's to retain a pilot's or an instructor's rating;
- familiarisation FLT's;
- check FLT's;
- positioning FLT's to deliver training at another AP;
- FLT's to maintain a certification on specific APCH procedures.

**Gliders**

Towing ACFT are exempt from APCH charges for APCH on the grass RWY for gliders:

For powered gliders, the ordinary APCH charges are levied.

For instruction and training FLT's with towing ACFT and powered gliders, the rate and the definition of "VFR training flights" are applicable.

**Exempt flights**

The following FLT's are exempt from APCH charges on:

- a. FLT's operated exclusively for the transport, on official mission, of the following passengers:
  - Reigning monarch and his immediate family
  - Heads of State, heads of Government and Government Ministers

In all cases, the exemption must be substantiated by the appropriate status indicator or remark on the flight plan.

- b. SAR FLT's, as defined in the corresponding Federal Ordinance.
- c. FLT's performed exclusively for the purpose of checking or testing equipment used or intended to be used as ground aids to air navigation, excluding positioning FLT's by the ACFT concerned.

**9.3 Billing and collection of charges**

The AD is responsible for the billing and collection of the charges. Information concerning the billing and collection of APCH charges may be obtained from the local AP authorities.

**10. ANNEX 1: Approach charges for aerodromes of category I**

The tariffs are exclusive of VAT.

(1) Zurich excluded

Maximum take-off mass (MTOM in kg)		Charges CHF	VFR training flights CHF <sup>(1)</sup>	Maximum take-off mass (MTOM in kg)		Charges CHF	VFR training flights CHF <sup>(1)</sup>
1	- 1 000	7.30	3.85	40 001	- 41 000	461.60	
1 001	- 2 000	15.00	7.70	41 001	- 42 000	469.50	
2 001	- 3 000	21.30	11.25	42 001	- 43 000	477.30	
3 001	- 4 000	90.50	15.00	43 001	- 44 000	485.00	
4 001	- 5 000	105.80	18.75	44 001	- 45 000	492.70	
5 001	- 6 000	120.20	22.20	45 001	- 46 000	500.30	
6 001	- 7 000	133.90	25.90	46 001	- 47 000	507.90	
7 001	- 8 000	147.10	29.60	47 001	- 48 000	515.50	
8 001	- 9 000	159.70	33.30	48 001	- 49 000	523.00	
9 001	- 10 000	171.90	37.00	49 001	- 50 000	530.40	
10 001	- 11 000	183.80	40.70	50 001	- 51 000	537.80	
11 001	- 12 000	195.30	44.40	51 001	- 52 000	545.20	
12 001	- 13 000	206.60	48.10	52 001	- 53 000	552.50	
13 001	- 14 000	217.60	51.80	53 001	- 54 000	559.80	
14 001	- 15 000	228.30	55.50	54 001	- 55 000	567.00	
15 001	- 16 000	238.90	59.20	55 001	- 56 000	574.20	
16 001	- 17 000	249.30	62.90	56 001	- 57 000	581.40	
17 001	- 18 000	259.40	66.60	57 001	- 58 000	588.50	
18 001	- 19 000	269.40	70.30	58 001	- 59 000	595.60	
19 001	- 20 000	279.30	74.00	59 001	- 60 000	602.60	
20 001	- 21 000	289.00	76.65	60 001	- 61 000	609.60	
21 001	- 22 000	298.60	80.30	61 001	- 62 000	616.60	
22 001	- 23 000	308.00	83.95	62 001	- 63 000	623.50	
23 001	- 24 000	317.30	87.60	63 001	- 64 000	630.50	
24 001	- 25 000	326.50	91.25	64 001	- 65 000	637.30	
25 001	- 26 000	335.60	94.90	65 001	- 66 000	644.20	
26 001	- 27 000	344.60	98.55	66 001	- 67 000	651.00	
27 001	- 28 000	353.50	102.20	67 001	- 68 000	657.80	
28 001	- 29 000	362.30	105.85	68 001	- 69 000	664.50	
29 001	- 30 000	371.00	109.50	69 001	- 70 000	671.30	
30 001	- 31 000	379.60		70 001	- 71 000	678.00	
31 001	- 32 000	388.10		71 001	- 72 000	684.60	
32 001	- 33 000	396.50		72 001	- 73 000	691.30	
33 001	- 34 000	404.90		73 001	- 74 000	697.90	
34 001	- 35 000	413.20		74 001	- 75 000	704.50	
35 001	- 36 000	421.40		75 001	- 76 000	711.10	
36 001	- 37 000	429.60		76 001	- 77 000	717.60	
37 001	- 38 000	437.70		77 001	- 78 000	724.10	
38 001	- 39 000	445.70		78 001	- 79 000	730.60	
39 001	- 40 000	453.70		79 001	- 80 000	737.00	

Maximum take-off mass (MTOM in kg)			Charges CHF	VFR training flights CHF <sub>(1)</sub>	Maximum take-off mass (MTOM in kg)			Charges CHF	VFR training flights CHF <sub>(1)</sub>
80 001	-	81 000	743.50		125 001	-	126 000	1013.00	
81 001	-	82 000	749.90		126 001	-	127 000	1018.60	
82 001	-	83 000	756.30		127 001	-	128 000	1024.20	
83 001	-	84 000	762.70		128 001	-	129 000	1029.80	
84 001	-	85 000	769.00		129 001	-	130 000	1035.40	
85 001	-	86 000	775.30		130 001	-	131 000	1040.90	
86 001	-	87 000	781.60		131 001	-	132 000	1046.50	
87 001	-	88 000	787.90		132 001	-	133 000	1052.00	
88 001	-	89 000	794.20		133 001	-	134 000	1057.60	
89 001	-	90 000	800.40		134 001	-	135 000	1063.10	
90 001	-	91 000	806.60		135 001	-	136 000	1068.60	
91 001	-	92 000	812.80		136 001	-	137 000	1074.10	
92 001	-	93 000	819.00		137 001	-	138 000	1079.60	
93 001	-	94 000	825.10		138 001	-	139 000	1085.00	
94 001	-	95 000	831.30		139 001	-	140 000	1090.50	
95 001	-	96 000	837.40		140 001	-	141 000	1095.90	
96 001	-	97 000	843.50		141 001	-	142 000	1101.40	
97 001	-	98 000	849.60		142 001	-	143 000	1106.80	
98 001	-	99 000	855.60		143 001	-	144 000	1112.20	
99 001	-	100 000	861.70		144 001	-	145 000	1117.60	
100 001	-	101 000	867.70		145 001	-	146 000	1123.00	
101 001	-	102 000	873.70		146 001	-	147 000	1128.40	
102 001	-	103 000	879.70		147 001	-	148 000	1133.70	
103 001	-	104 000	885.60		148 001	-	149 000	1139.10	
104 001	-	105 000	891.60		149 001	-	150 000	1144.40	
105 001	-	106 000	897.50		150 001	-	151 000	1149.80	
106 001	-	107 000	903.40		151 001	-	152 000	1155.10	
107 001	-	108 000	909.30		152 001	-	153 000	1160.40	
108 001	-	109 000	915.20		153 001	-	154 000	1165.70	
109 001	-	110 000	921.10		154 001	-	155 000	1171.00	
110 001	-	111 000	927.00		155 001	-	156 000	1176.30	
111 001	-	112 000	932.80		156 001	-	157 000	1181.60	
112 001	-	113 000	938.60		157 001	-	158 000	1186.80	
113 001	-	114 000	944.40		158 001	-	159 000	1192.10	
114 001	-	115 000	950.20		159 001	-	160 000	1197.30	
115 001	-	116 000	956.00		160 001	-	161 000	1202.60	
116 001	-	117 000	961.80		161 001	-	162 000	1207.80	
117 001	-	118 000	967.50		162 001	-	163 000	1213.00	
118 001	-	119 000	973.20		163 001	-	164 000	1218.20	
119 001	-	120 000	978.90		164 001	-	165 000	1223.40	
120 001	-	121 000	984.70		165 001	-	166 000	1228.60	
121 001	-	122 000	990.30		166 001	-	167 000	1233.80	
122 001	-	123 000	996.00		167 001	-	168 000	1238.90	
123 001	-	124 000	1001.70		168 001	-	169 000	1244.10	
124 001	-	125 000	1007.30		169 001	-	170 000	1249.20	

Maximum take-off mass (MTOM in kg)			Charges CHF	VFR training flights CHF <sup>(1)</sup>
170 001	-	171 000	1254.40	
171 001	-	172 000	1259.50	
172 001	-	173 000	1264.60	
173 001	-	174 000	1269.70	
174 001	-	175 000	1274.90	
175 001	-	176 000	1279.90	
176 001	-	177 000	1285.00	
177 001	-	178 000	1290.10	
178 001	-	179 000	1295.20	
179 001	-	180 000	1300.20	
180 001	-	181 000	1305.30	
181 001	-	182 000	1310.30	
182 001	-	183 000	1315.40	
183 001	-	184 000	1320.40	
184 001	-	185 000	1325.40	
185 001	-	186 000	1330.40	
186 001	-	187 000	1335.40	
187 001	-	188 000	1340.40	
188 001	-	189 000	1345.40	
189 001	-	190 000	1350.40	
190 001	-	191 000	1355.40	
191 001	-	192 000	1360.30	
192 001	-	193 000	1365.30	
193 001	-	194 000	1370.20	
194 001	-	195 000	1375.20	
195 001	-	196 000	1380.10	
196 001	-	197 000	1385.00	
197 001	-	198 000	1389.90	
198 001	-	199 000	1394.90	
199 001	-	200 000	1399.80	
200 001	-	201 000	1404.70	
201 001	-	202 000	1409.50	
202 001	-	203 000	1414.40	
203 001	-	204 000	1419.30	
204 001	-	205 000	1424.20	
205 001	-	206 000	1429.00	
206 001	-	207 000	1433.90	
207 001	-	208 000	1438.70	
208 001	-	209 000	1443.60	
209 001	-	210 000	1448.40	
210 001	-	211 000	1453.20	
211 001	-	212 000	1458.00	
212 001	-	213 000	1462.80	
213 001	-	214 000	1467.60	

Maximum take-off mass (MTOM in kg)			Charges CHF	VFR training flights CHF <sup>(1)</sup>
214 001	-	215 000	1472.40	
215 001	-	216 000	1477.20	
216 001	-	217 000	1482.00	
217 001	-	218 000	1486.80	
218 001	-	219 000	1491.60	
219 001	-	220 000	1496.30	
220 001	-	221 000	1501.10	
221 001	-	222 000	1505.80	
222 001	-	223 000	1510.60	
223 001	-	224 000	1515.30	
224 001	-	225 000	1520.10	
225 001	-	226 000	1524.80	
226 001	-	227 000	1529.50	
227 001	-	228 000	1534.20	
228 001	-	229 000	1538.90	
229 001	-	230 000	1543.60	
230 001	-	231 000	1548.30	
231 001	-	232 000	1553.00	
232 001	-	233 000	1557.70	
233 001	-	234 000	1562.40	
234 001	-	235 000	1567.00	
235 001	-	236 000	1571.70	
236 001	-	237 000	1576.40	
237 001	-	238 000	1581.00	
238 001	-	239 000	1585.70	
239 001	-	240 000	1590.30	
240 001	-	241 000	1594.90	
241 001	-	242 000	1599.60	
242 001	-	243 000	1604.20	
243 001	-	244 000	1608.80	
244 001	-	245 000	1613.40	
245 001	-	246 000	1618.00	
246 001	-	247 000	1622.60	
247 001	-	248 000	1627.20	
248 001	-	249 000	1631.80	
249 001	-	250 000	1636.40	
250 001	-	251 000	1641.00	
251 001	-	252 000	1645.60	
252 001	-	253 000	1650.10	
253 001	-	254 000	1654.70	
254 001	-	255 000	1659.20	
255 001	-	256 000	1663.80	
256 001	-	257 000	1668.30	
257 001	-	258 000	1672.90	

Maximum take-off mass (MTOM in kg)			Charges CHF	VFR training flights CHF <sub>(1)</sub>	Maximum take-off mass (MTOM in kg)			Charges CHF	VFR training flights CHF <sub>(1)</sub>
258 001	-	259 000	1677.40		299 001	-	300 000	1859.20	
259 001	-	260 000	1682.00		300 001	-	301 000	1863.50	
260 001	-	261 000	1686.50		301 001	-	302 000	1867.80	
261 001	-	262 000	1691.00		302 001	-	303 000	1872.20	
262 001	-	263 000	1695.50		303 001	-	304 000	1876.50	
263 001	-	264 000	1700.00		304 001	-	305 000	1880.80	
264 001	-	265 000	1704.50		305 001	-	306 000	1885.10	
265 001	-	266 000	1709.00		306 001	-	307 000	1889.40	
266 001	-	267 000	1713.50		307 001	-	308 000	1893.70	
267 001	-	268 000	1718.00		308 001	-	309 000	1898.00	
268 001	-	269 000	1722.50		309 001	-	310 000	1902.30	
269 001	-	270 000	1727.00		310 001	-	311 000	1906.60	
270 001	-	271 000	1731.50		311 001	-	312 000	1910.90	
271 001	-	272 000	1735.90		312 001	-	313 000	1915.20	
272 001	-	273 000	1740.40		313 001	-	314 000	1919.50	
273 001	-	274 000	1744.80		314 001	-	315 000	1923.80	
274 001	-	275 000	1749.30		315 001	-	316 000	1928.00	
275 001	-	276 000	1753.80		316 001	-	317 000	1932.30	
276 001	-	277 000	1758.20		317 001	-	318 000	1936.60	
277 001	-	278 000	1762.60		318 001	-	319 000	1940.80	
278 001	-	279 000	1767.10		319 001	-	320 000	1945.10	
279 001	-	280 000	1771.50		320 001	-	321 000	1949.30	
280 001	-	281 000	1775.90		321 001	-	322 000	1953.60	
281 001	-	282 000	1780.40		322 001	-	323 000	1957.80	
282 001	-	283 000	1784.80		323 001	-	324 000	1962.10	
283 001	-	284 000	1789.20		324 001	-	325 000	1966.30	
284 001	-	285 000	1793.60		325 001	-	326 000	1970.50	
285 001	-	286 000	1798.00		326 001	-	327 000	1974.80	
286 001	-	287 000	1802.40		327 001	-	328 000	1979.00	
287 001	-	288 000	1806.80		328 001	-	329 000	1983.20	
288 001	-	289 000	1811.20		329 001	-	330 000	1987.40	
289 001	-	290 000	1815.60		330 001	-	331 000	1991.60	
290 001	-	291 000	1819.90		331 001	-	332 000	1995.90	
291 001	-	292 000	1824.30		332 001	-	333 000	2000.10	
292 001	-	293 000	1828.70		333 001	-	334 000	2004.30	
293 001	-	294 000	1833.10		334 001	-	335 000	2008.50	
294 001	-	295 000	1837.40		335 001	-	336 000	2012.70	
295 001	-	296 000	1841.80		336 001	-	337 000	2016.90	
296 001	-	297 000	1846.10		337 001	-	338 000	2021.00	
297 001	-	298 000	1850.50		338 001	-	339 000	2025.20	
298 001	-	299 000	1854.80		339 001	-	340 000	2029.40	

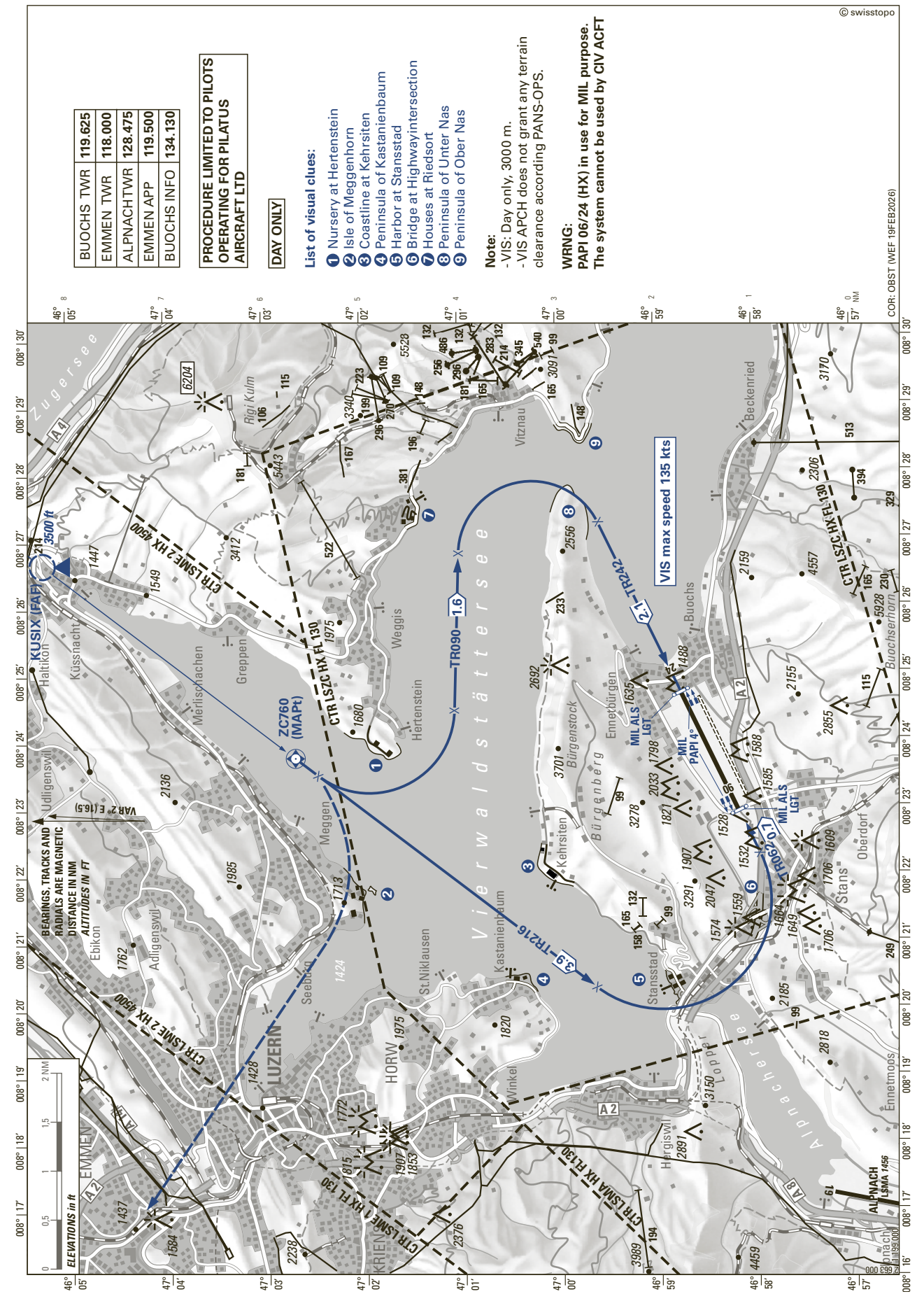
Maximum take-off mass (MTOM in kg)			Charges CHF	VFR training flights CHF <sup>(1)</sup>
340 001	-	341 000	2033.60	
341 001	-	342 000	2037.80	
342 001	-	343 000	2041.90	
343 001	-	344 000	2046.10	
344 001	-	345 000	2050.20	
345 001	-	346 000	2054.40	
346 001	-	347 000	2058.60	
347 001	-	348 000	2062.70	
348 001	-	349 000	2066.90	
349 001	-	350 000	2071.00	
350 001	-	351 000	2075.10	
351 001	-	352 000	2079.30	
352 001	-	353 000	2083.40	
353 001	-	354 000	2087.50	
354 001	-	355 000	2091.70	
355 001	-	356 000	2095.80	
356 001	-	357 000	2099.90	
357 001	-	358 000	2104.00	
358 001	-	359 000	2108.10	
359 001	-	360 000	2112.20	
360 001	-	361 000	2116.40	
361 001	-	362 000	2120.50	
362 001	-	363 000	2124.60	
363 001	-	364 000	2128.60	
364 001	-	365 000	2132.70	
365 001	-	366 000	2136.80	
366 001	-	367 000	2140.90	
367 001	-	368 000	2145.00	
368 001	-	369 000	2149.10	
369 001	-	370 000	2153.10	
370 001	-	371 000	2157.20	
371 001	-	372 000	2161.30	
372 001	-	373 000	2165.40	
373 001	-	374 000	2169.40	
374 001	-	375 000	2173.50	
375 001	-	376 000	2177.50	
376 001	-	377 000	2181.60	
377 001	-	378 000	2185.60	
378 001	-	379 000	2189.70	
379 001	-	380 000	2193.70	
380 001	-	381 000	2197.80	
381 001	-	382 000	2201.80	
382 001	-	383 000	2205.80	
383 001	-	384 000	2209.90	
384 001	-	385 000	2213.90	

Maximum take-off mass (MTOM in kg)			Charges CHF	VFR training flights CHF <sup>(1)</sup>
385 001	-	386 000	2217.90	
386 001	-	387 000	2221.90	
387 001	-	388 000	2225.90	
388 001	-	389 000	2230.00	
389 001	-	390 000	2234.00	
390 001	-	391 000	2238.00	
391 001	-	392 000	2242.00	
392 001	-	393 000	2246.00	
393 001	-	394 000	2250.00	
394 001	-	395 000	2254.00	
395 001	-	396 000	2258.00	
396 001	-	397 000	2262.00	
397 001	-	398 000	2266.00	
398 001	-	399 000	2269.90	
399 001	-	400 000	2273.90	
400 001	-	401 000	2277.90	
401 001	-	402 000	2281.90	
402 001	-	403 000	2285.80	
403 001	-	404 000	2289.80	
404 001	-	405 000	2293.80	
405 001	-	406 000	2297.70	
406 001	-	407 000	2301.70	
407 001	-	408 000	2305.70	
408 001	-	409 000	2309.60	
409 001	-	410 000	2313.60	
410 001	-	411 000	2317.50	
411 001	-	412 000	2321.50	
412 001	-	413 000	2325.40	
413 001	-	414 000	2329.30	
414 001	-	415 000	2333.30	
415 001	-	416 000	2337.20	
416 001	-	417 000	2341.10	
417 001	-	418 000	2345.10	
418 001	-	419 000	2349.00	
419 001	-	420 000	2352.90	
420 001	-	421 000	2356.80	
421 001	-	422 000	2360.80	
422 001	-	423 000	2364.70	
423 001	-	424 000	2368.60	
424 001	-	425 000	2372.50	
425 001	-	426 000	2376.40	
426 001	-	427 000	2380.30	
427 001	-	428 000	2384.20	
428 001	-	429 000	2388.10	
429 001	-	430 000	2392.00	

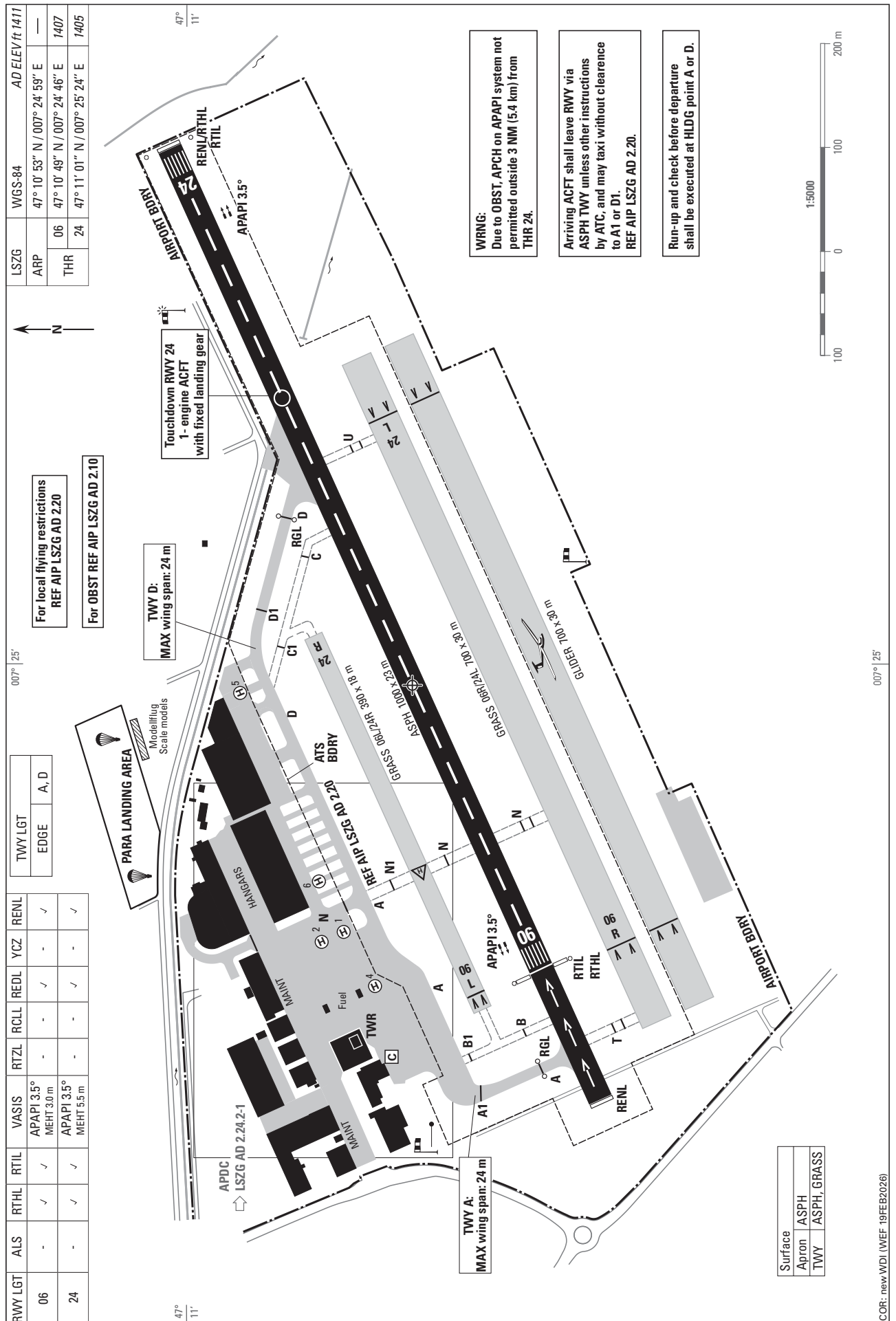
Maximum take-off mass (MTOM in kg)			Charges CHF	VFR training flights CHF <sub>(1)</sub>	Maximum take-off mass (MTOM in kg)			Charges CHF	VFR training flights CHF <sub>(1)</sub>
430 001	-	431 000	2395.90		475 001	-	476 000	2568.40	
431 001	-	432 000	2399.80		476 001	-	477 000	2572.10	
432 001	-	433 000	2403.70		477 001	-	478 000	2575.90	
433 001	-	434 000	2407.60		478 001	-	479 000	2579.70	
434 001	-	435 000	2411.40		479 001	-	480 000	2583.50	
435 001	-	436 000	2415.30		480 001	-	481 000	2587.20	
436 001	-	437 000	2419.20		481 001	-	482 000	2591.00	
437 001	-	438 000	2423.10		482 001	-	483 000	2594.80	
438 001	-	439 000	2426.90		483 001	-	484 000	2598.50	
439 001	-	440 000	2430.80		484 001	-	485 000	2602.30	
440 001	-	441 000	2434.70		485 001	-	486 000	2606.00	
441 001	-	442 000	2438.50		486 001	-	487 000	2609.80	
442 001	-	443 000	2442.40		487 001	-	488 000	2613.50	
443 001	-	444 000	2446.20		488 001	-	489 000	2617.30	
444 001	-	445 000	2450.10		489 001	-	490 000	2621.00	
445 001	-	446 000	2454.00		490 001	-	491 000	2624.80	
446 001	-	447 000	2457.80		491 001	-	492 000	2628.50	
447 001	-	448 000	2461.70		492 001	-	493 000	2632.20	
448 001	-	449 000	2465.50		493 001	-	494 000	2636.00	
449 001	-	450 000	2469.30		494 001	-	495 000	2639.70	
450 001	-	451 000	2473.20		495 001	-	496 000	2643.40	
451 001	-	452 000	2477.00		496 001	-	497 000	2647.20	
452 001	-	453 000	2480.90		497 001	-	498 000	2650.90	
453 001	-	454 000	2484.70		498 001	-	499 000	2654.60	
454 001	-	455 000	2488.50		499 001	-	500 000	2658.30	
455 001	-	456 000	2492.30		500 001	-	501 000	2662.10	
456 001	-	457 000	2496.20		501 001	-	502 000	2665.80	
457 001	-	458 000	2500.00		502 001	-	503 000	2669.50	
458 001	-	459 000	2503.80		503 001	-	504 000	2673.20	
459 001	-	460 000	2507.60		504 001	-	505 000	2676.90	
460 001	-	461 000	2511.40		505 001	-	506 000	2680.60	
461 001	-	462 000	2515.30		506 001	-	507 000	2684.30	
462 001	-	463 000	2519.10		507 001	-	508 000	2688.00	
463 001	-	464 000	2522.90		508 001	-	509 000	2691.80	
464 001	-	465 000	2526.70		509 001	-	510 000	2695.50	
465 001	-	466 000	2530.50		510 001	-	511 000	2699.20	
466 001	-	467 000	2534.30		511 001	-	512 000	2702.80	
467 001	-	468 000	2538.10		512 001	-	513 000	2706.50	
468 001	-	469 000	2541.90		513 001	-	514 000	2710.20	
469 001	-	470 000	2545.70		514 001	-	515 000	2713.90	
470 001	-	471 000	2549.50		515 001	-	516 000	2717.60	
471 001	-	472 000	2553.20		516 001	-	517 000	2721.30	
472 001	-	473 000	2557.00		517 001	-	518 000	2725.00	
473 001	-	474 000	2560.80		518 001	-	519 000	2728.70	
474 001	-	475 000	2564.60		519 001	-	520 000	2732.30	

Maximum take-off mass (MTOM in kg)			Charges CHF	VFR training flights CHF <sub>(1)</sub>
520 001	-	521 000	2736.00	
521 001	-	522 000	2739.70	
522 001	-	523 000	2743.40	
523 001	-	524 000	2747.00	
524 001	-	525 000	2750.70	
525 001	-	526 000	2754.40	
526 001	-	527 000	2758.00	
527 001	-	528 000	2761.70	
528 001	-	529 000	2765.40	
529 001	-	530 000	2769.00	
530 001	-	531 000	2772.70	
531 001	-	532 000	2776.30	
532 001	-	533 000	2780.00	
533 001	-	534 000	2783.60	
534 001	-	535 000	2787.30	
535 001	-	536 000	2790.90	
536 001	-	537 000	2794.60	
537 001	-	538 000	2798.20	
538 001	-	539 000	2801.80	
539 001	-	540 000	2805.50	
540 001	-	541 000	2809.10	
541 001	-	542 000	2812.80	
542 001	-	543 000	2816.40	
543 001	-	544 000	2820.00	
544 001	-	545 000	2823.60	
545 001	-	546 000	2827.30	
546 001	-	547 000	2830.90	
547 001	-	548 000	2834.50	
548 001	-	549 000	2838.10	
549 001	-	550 000	2841.80	
550 001	-	551 000	2845.40	
551 001	-	552 000	2849.00	
552 001	-	553 000	2852.60	
553 001	-	554 000	2856.20	
554 001	-	555 000	2859.80	
555 001	-	556 000	2863.40	
556 001	-	557 000	2867.00	
557 001	-	558 000	2870.60	
558 001	-	559 000	2874.20	
559 001	-	560 000	2877.80	
560 001	-	561 000	2881.40	
561 001	-	562 000	2885.00	
562 001	-	563 000	2888.60	
563 001	-	564 000	2892.20	
564 001	-	565 000	2895.80	

Maximum take-off mass (MTOM in kg)			Charges CHF	VFR training flights CHF <sub>(1)</sub>
565 001	-	566 000	2899.40	
566 001	-	567 000	2903.00	
567 001	-	568 000	2906.50	
568 001	-	569 000	2910.10	
569 001	-	570 000	2913.70	
570 001	-	571 000	2917.30	
571 001	-	572 000	2920.90	
572 001	-	573 000	2924.40	
573 001	-	574 000	2928.00	
574 001	-	575 000	2931.60	
575 001	-	576 000	2935.10	
576 001	-	577 000	2938.70	
577 001	-	578 000	2942.30	
578 001	-	579 000	2945.80	
579 001	-	580 000	2949.40	
580 001	-	581 000	2952.90	
581 001	-	582 000	2956.50	
582 001	-	583 000	2960.10	
583 001	-	584 000	2963.60	
584 001	-	585 000	2967.20	
585 001	-	586 000	2970.70	
586 001	-	587 000	2974.30	
587 001	-	588 000	2977.80	
588 001	-	589 000	2981.40	
589 001	-	590 000	2984.90	
590 001	-	591 000	2988.40	
591 001	-	592 000	2992.00	
592 001	-	593 000	2995.50	
593 001	-	594 000	2999.00	
594 001	-	595 000	3002.60	
595 001	-	596 000	3006.10	
596 001	-	597 000	3009.60	
597 001	-	598 000	3013.20	
598 001	-	599 000	3016.70	
599 001	-	600 000	3020.20	



THIS PAGE INTENTIONALLY LEFT BLANK



THIS PAGE INTENTIONALLY LEFT BLANK



THIS PAGE INTENTIONALLY LEFT BLANK

**LSZR AD 2.13 DECLARED DISTANCES**

RWY Designator	TORA (m)	TODA (m)	ASDA (m)	LDA (m)	Remarks
1	2	3	4	5	6
10	1455	1515	1455	1380	Public roads behind RWY (outside airport area)
28	1455	1515	1455	1400	Public roads behind RWY (outside airport area)
10 GRASS	810	810	810	810	NIL
28 GRASS	810	810	810	810	NIL

**LSZR AD 2.14 APPROACH AND RUNWAY LIGHTING**

RWY Designator	ALS type, LEN, INTST	THR LGT colour, INTST, WBAR	VASIS type, PSN, MEHT	RTZL LEN, colour, INTST	RCLL LEN, spacing, colour, INTST	REDL LEN, spacing, colour, INTST	RENL colour, INTST	SWY LGT LEN, colour, INTST	RMK
1	2	3	4	5	6	7	8	9	10
10	RLLS Seq. FLG LGT, 300 m, W, LIH, no LED	RTHL G, LIH, WBAR, no LED; RTIL FLG W, no LED	PAPI 4.0°, L+R, 7.0 m, no LED	Simple TZL* 473 m FM THR 10, W, LIH, LED	NIL	75 m, 50 m, R, LIH; 930 m, 50 m, W, LIH; 450 m, 50 m, Y, LIH, All no LED	R, LIH, no LED	NIL	First RLLS LGT is 530 m FM THR10
28	NIL	RTHL G, LIH, WBAR, no LED	PAPI 4.0°, L, 8.5 m, no LED	Simple TZL* 473 m FM THR 28, W, LIH, LED	NIL	55 m, 50 m, R, LIH; 950 m, 50 m, W, LIH; 450 m, 50 m, Y, LIH, All no LED	R, LIH, LED	NIL	NIL

**TZL\*:** The purpose of simple touchdown zone lights is to provide pilots with enhanced situational awareness in all visibility conditions and to help enable pilots to decide whether to commence a go-around if the aircraft has not landed by a certain point on the runway.

**LSZR AD 2.15 OTHER LIGHTING, SECONDARY POWER SUPPLY**

1	ABN/IBN location, characteristics and hours of operation	NIL
2	LDI location and LGT Anemometer location and LGT	No LDI. Anemometer: RWY 10: 220 m E of THR 10, LGTD. RWY 28: 140 m W of THR 28, LGTD.
3	TWY edge and centre line lighting	Edge: TWY A and S partly. Turn pads 10 and 28. LIL, B, no LED. CL: NIL
4	Secondary power supply/switch-over time	AVBL / MAX 15 sec; DEP in VIS less than 800m MAX 1 sec.
5	Remarks	OBST: Marked and lighted (see <a href="#">LSZR AD 2.24.1 - 1</a> )

**LSZR AD 2.16 HELICOPTER LANDING AREA**

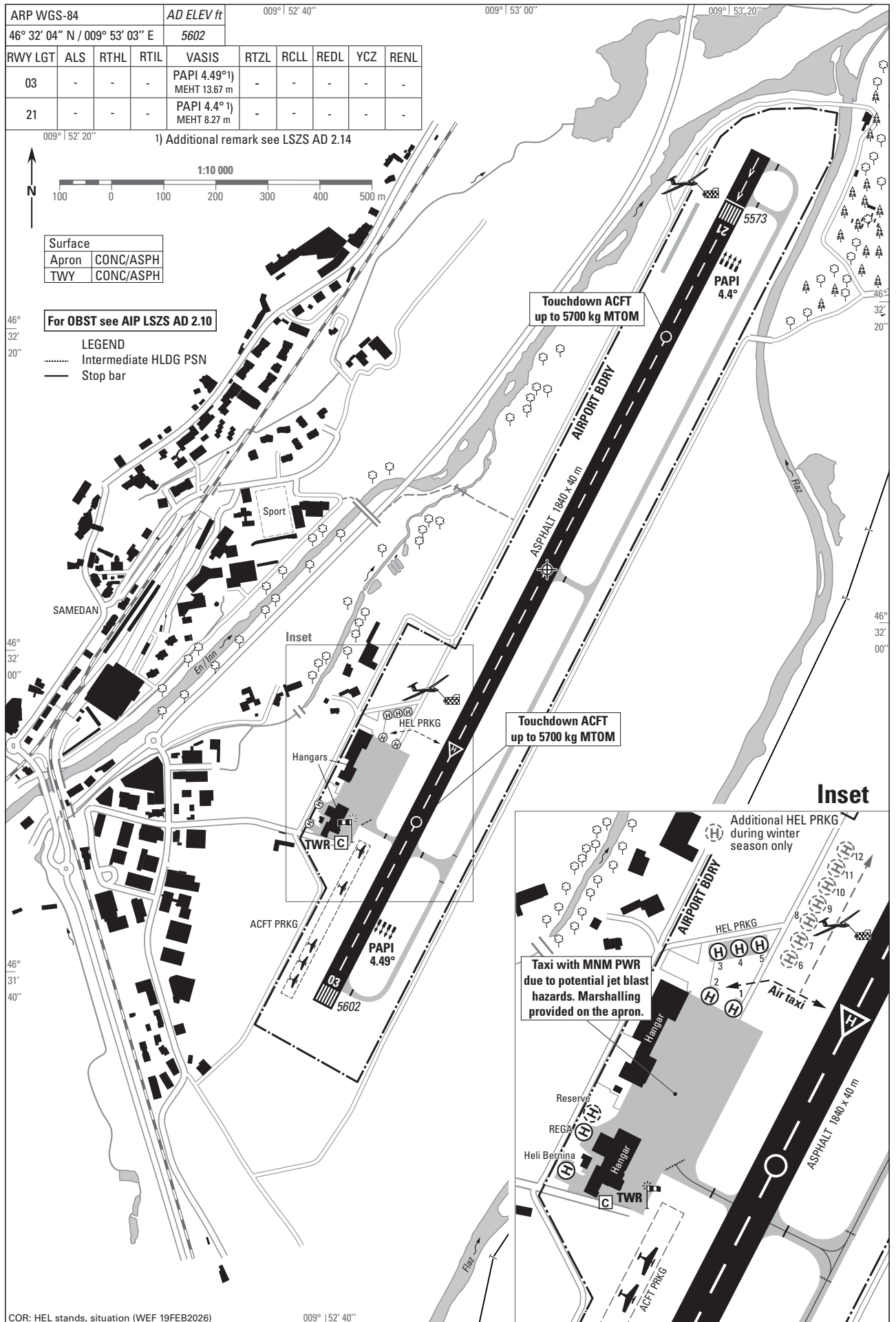
1	Coordinates TLOF or THR of FATO	TLOF: Main Apron: 47 29 13.87N / 009 33 10.73E TLOF: Hangar B2: 47 29 13.74N / 009 33 44.68E
	Geoid undulation	NIL
2	TLOF and/or FATO elevation	TLOF: Main Apron: 398 m / 1306 ft TLOF: Hangar B2: 398 m / 1306 ft
3	TLOF and FATO area dimensions, surface, strength, marking	TLOF: Main Apron: TLOF stand MAX OAL or OAW 15.6 m, ASPH, marked TLOF: Hangar B2: TLOF stand MAX OAL or OAW 13.0 m, ASPH, marked
4	True BRG of FATO	RWY 10: GRASS; 099° RWY 28: GRASS; 279°
5	Declared distance available	See: <a href="#">LSZR AD 2.13</a> for RWY 10-28 GRASS
6	APP and FATO lighting	NIL
7	Remarks	NIL

**LSZR AD 2.17 ATS AIRSPACE**

1	Designation and lateral limits	<b>St. Gallen CTR</b> 47 33 08 N 009 31 28 E - FIR SWITZERLAND/FIR MUNICH - 47 32 31 N 009 33 16 E - German/Austrian border - 47 31 31 N 009 37 50 E - arc of circle radius 1.90 NM on 47 29 40 N 009 37 08 E - 47 27 46 N 009 37 13 E - 47 28 40 N 009 23 09 E - 47 31 13 N 009 23 36 E - 47 33 29 N 009 26 51 E - 47 33 08 N 009 31 28 E
2	Vertical limits	5500 ft AMSL (1700 m)
3	Airspace classification	D
4	ATS unit call sign Language(s)	En; En and Ge for Non-Commercial VFR traffic.
5	Transition altitude	5000 ft AMSL
6	Remarks	ACT: HX - ATIS (monitoring compulsory)

**LSZR AD 2.18 ATS COMMUNICATION FACILITIES**

Service designation	Call sign	Frequency	Hours of Operation	Remarks
1	2	3	4	5
ATIS		123.780 MHz	H24	Phone Service: +41 (0) 43 488 19 55
APP	ALPS RADAR	119.925 MHz	H24	Language: En; Ge
TWR	St. Gallen Tower	135.430 MHz 119.700 MHz	HX	ALTN FREQ Language: En; En and Ge for Non-Commercial VFR traffic.
		121.500 MHz		EMERG
GND	St. Gallen Ground	121.805 MHz		According to ATIS INFO Language: En; En and Ge for Non-Commercial VFR traffic.



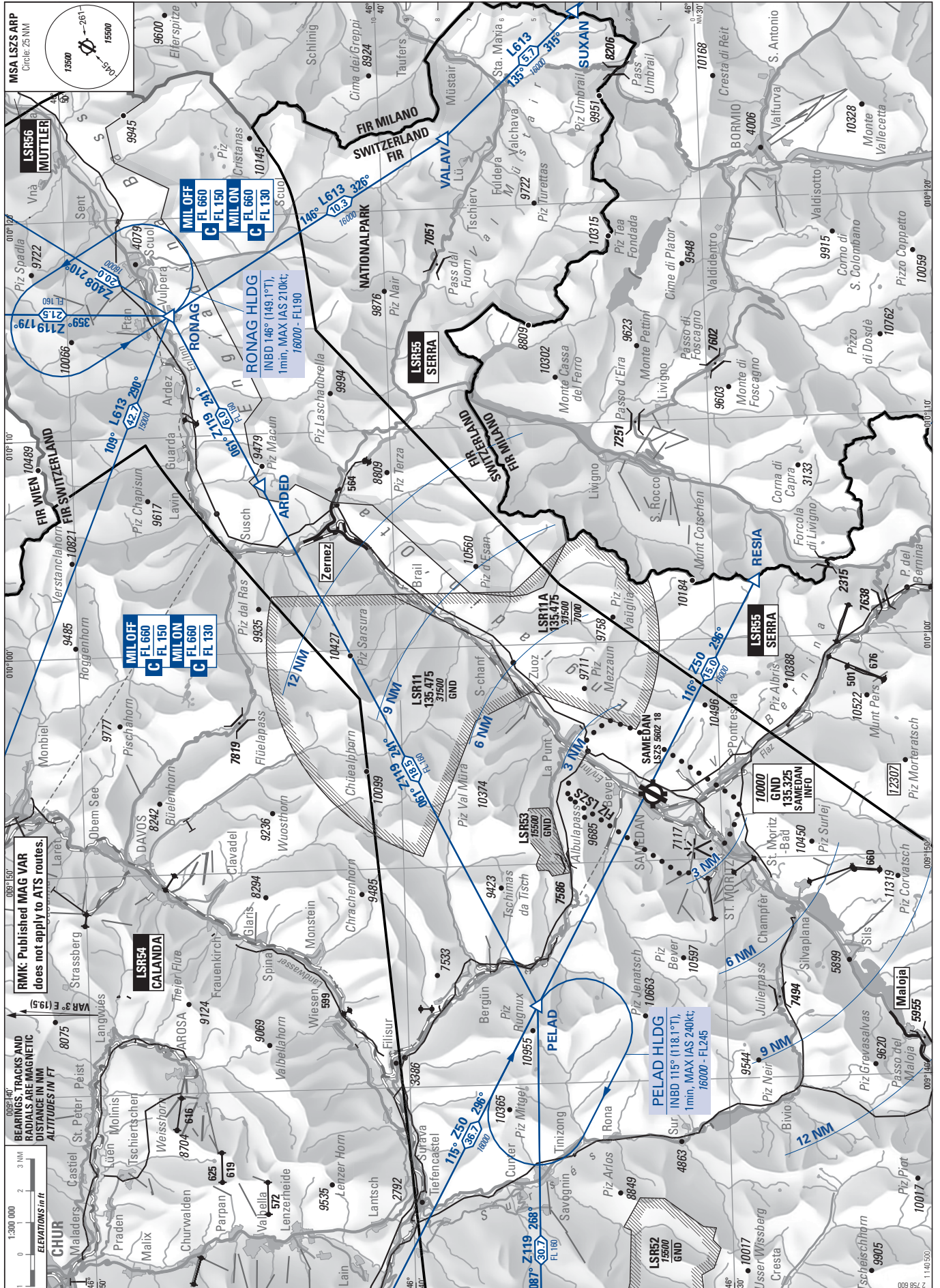
THIS PAGE INTENTIONALLY LEFT BLANK

VFR Area Chart for Y and Z ATC FPL

**MOUNTAINOUS AREA**  
ELEV 5602 ft (1708 m)

ATIS	136.600 HO
AFIS	135.325 HO
DELIVERY	121.880 HX

SAMEDAN (LSZS)



**RMK: Published MAG VAR does not apply to ATS routes.**

**BEARINGS, TRACKS AND RADIALS ARE MAGNETIC DISTANCE IN NM ALTITUDES IN FT**

COR: OBST (WEF 19FEB2026)

©swisstopo

THIS PAGE INTENTIONALLY LEFT BLANK

**LSGS AD 2.7 SEASONAL AVAILABILITY - CLEARING**

1	Type(s) of clearing equipment	4 snow blowers, 4 snow ploughs, 4 jet sweepers, 3 RWY de-icer, 1 aircraft de-icer
2	Clearance priorities	1. RWY and associated TWY to apron 2. Other TWY and ACFT stands
3	Remarks	Information on snow clearance published from NOV 01 - APR 30 in NOTAM (SNOWTAM) RWY 07/25 de-iced / anti-iced with betaine: BETA Frost (liquid) / NUTRISTIM (solid).

**LSGS AD 2.8 APRONS, TAXIWAYS AND CHECK LOCATIONS/POSITIONS DATA**

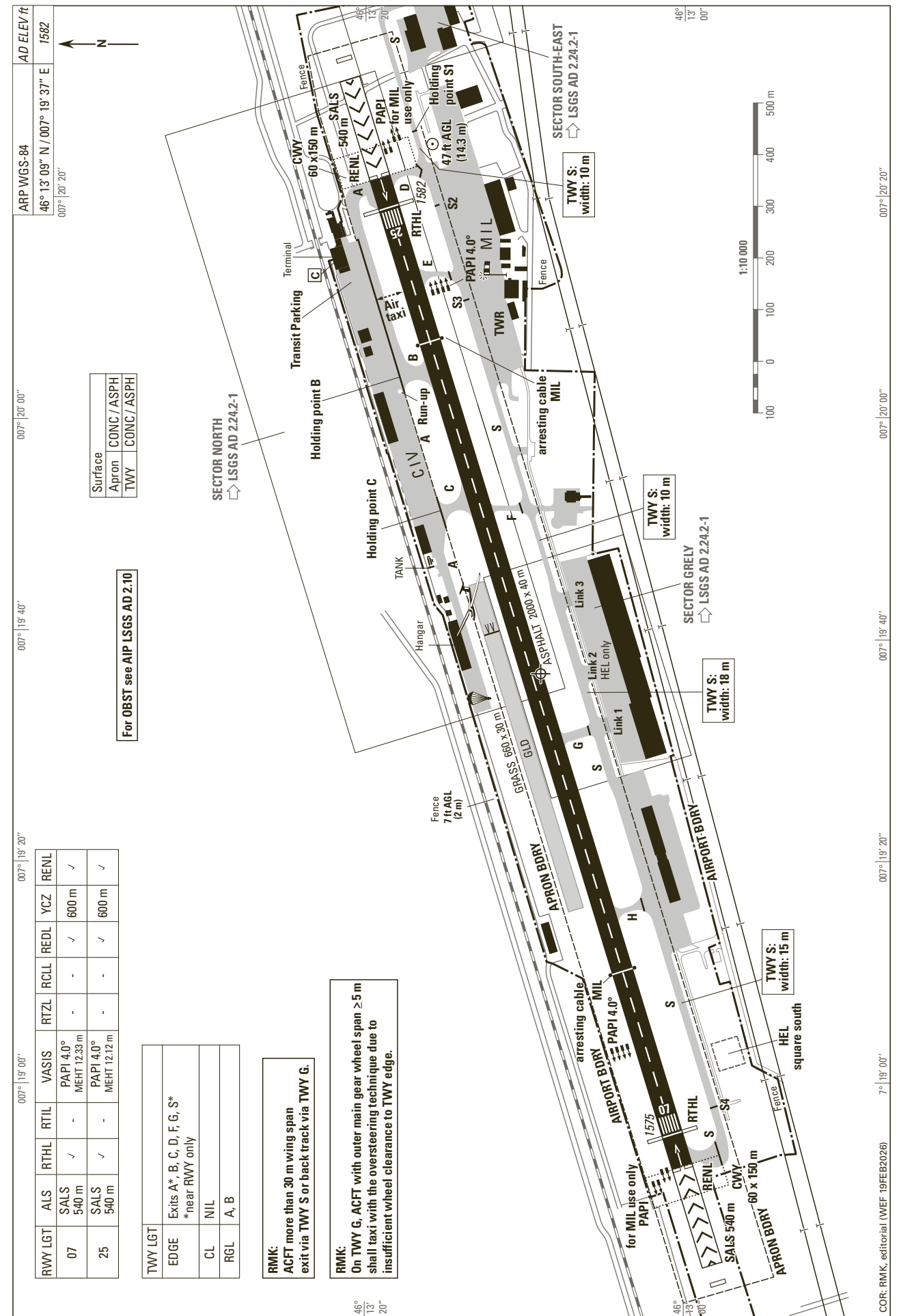
1	Designation, surface and strength of Aprons	CONC / ASPH PCR 377/F/B/X/U
2	Designation, width, surface and strength of Taxiways	15/20 m CONC / ASPH PCR 377/F/B/X/U Details: see <a href="#">LSGS AD 2.24</a> .
3	ACL location and elevation	No ACL markings
4	Location of VOR checkpoints	NIL
5	Location of INS checkpoints	NIL
6	Remarks	NIL

**LSGS AD 2.9 SURFACE MOVEMENT GUIDANCE, CONTROL SYSTEM AND MARKINGS**

1	Use of aircraft stand ID signs, TWY guide lines and visual docking/parking guidance system of aircraft stands	ACFT stand identification markings. Lead-in, stop and lead-out lines. Apron safety lines. Marshalling available on sectors North, Grély and South-East.
2	RWY/TWY markings and LGT	RWY markings: D-THR, designation, centre line and pre-THR area, side stripe. RWY LGT: see <a href="#">LSGS AD 2.14</a> TWY markings: Centre line, intermediate holding positions, runway holding position and mandatory instruction at all intersections with RWY. TWY LGT: see <a href="#">LSGS AD 2.15</a> Mandatory instruction signs at all RWY holding positions. Information signs on the movement area.
3	Stop bars and RWY guard lights	Stop bars: NIL RWY guard lights: on TWY A and B
4	Other RWY protection measures	NIL
5	Remarks	The portion of TWY A east of TWY B is located within the runway strip. No use without ATC instructions.

LSGS AD 2.10 AERODROME OBSTACLES

In approach/TKOF areas				In circling area and at aerodrome			
1				2			3
RWY/Area affected	Obstacle type Elevation Markings/LGT	Co-ordinates		Obstacle type Elevation Markings/LGT	Co-ordinates		RMK
a	b	c		a	b	c	
		ft			ft		
AOC 07 (1)	Enclosure	1591	46 13 22 N 007 20 23 E	Power line	85m AGL	46 15 47 N 007 14 30 E 46 15 27 N 007 14 14 E	B0060/02
AOC 07 (2)	Pole	1592	46 13 23 N 007 20 24 E	Building	1677	46 13 31 N 007 21 26 E	
AOC 07 (3)	Tree/Trees	1611	46 13 24 N 007 20 31 E	Antenna marked	4216	46 11 30 N 007 20 04 E	
AOC 07 (3a)	Tree/Trees	1628	46 13 22 N 007 20 43 E	Building LGTD	1624	46 13 29 N 007 20 53 E	
AOC 07 (3b)	Tree/Trees	1645	46 13 32 N 007 20 56 E	Tree/trees	1804	46 13 04 N 007 18 26 E	
AOC 07 (4)	Tree/Trees	1681	46 13 33 N 007 20 59 E	Tree/trees	1844	46 13 11 N 007 18 44 E	
AOC 07 (5)	Tree/Trees	1689	46 13 33 N 007 20 59 E	Crane/cranes	1686	46 12 55 N 007 17 53 E	B0032/04
AOC 07 (6)	Tree/Trees	1711	46 13 37 N 007 21 14 E	Tower/Mast marked	1693	46 12 51 N 007 18 41 E	
AOC 07 (7)	Tempo crane	1754	46 13 42 N 007 21 39 E	Building	1614	46 13 20 N 007 20 08 E	
AOC 07 (8)	Power line	1920	46 14 03 N 007 24 46 E	Building	1670	46 13 29 N 007 20 36 E	
AOC 07 (9)	Tree/Trees	1940	46 14 05 N 007 24 52 E	Building	1690	46 13 21 N 007 19 54 E	
AOC 07 (10)	Tree/Trees	2081	46 14 05 N 007 24 57 E	Tree/trees	1634	46 13 15 N 007 19 43 E	
AOC 07 (11)	Tree/Trees	2200	46 14 07 N 007 25 04 E	Power line	90 m AGL	46 13 13 N 007 14 50 E 46 13 20 N 007 14 43 E 46 13 28 N 007 14 43 E	B0059/02
AOC 07 (12)	Tree/Trees	2337	46 14 09 N 007 25 09 E	Building LGTD	1611	46 13 19 N 007 20 01 E	B0391/14
AOC 07 (13)	Tree/Trees	2501	46 14 10 N 007 25 15 E	Crane/cranes marked/LGTD	1670	46 13 12 N 007 20 19 E	B0411/05
AOC 07 (14)	Tree/Trees	2590	46 14 12 N 007 25 24 E	Crane/cranes marked	1690	46 13 28 N 007 20 19 E	B0322/22
AOC 07 (15)	Tree/Trees	2735	46 14 14 N 007 25 30 E	Aerial railway marked	3649	46 10 16 N 007 13 17 E 46 09 52 N 007 14 39 E	B0360/09
AOC 07 (16)	Tree/Trees	2865	46 14 21 N 007 25 50 E				
AOC 25 (1)	Enclosure	1585	46 13 01 N 007 18 49 E	Antenna	1697	46 13 40 N 007 21 32 E	B0512/06
AOC 25 (2)	Tree/Trees	1590	46 13 01 N 007 18 49 E	Crane marked/LGTD	1664	46 12 52 N 007 17 43 E	B1102/07
AOC 25 (3)	Tree/Trees	1591	46 13 01 N 007 18 44 E	Antenna LGTD	1631	46 13 11 N 007 19 12 E	B0488/08



THIS PAGE INTENTIONALLY LEFT BLANK



THIS PAGE INTENTIONALLY LEFT BLANK