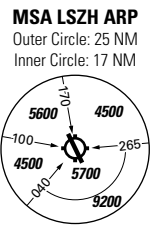
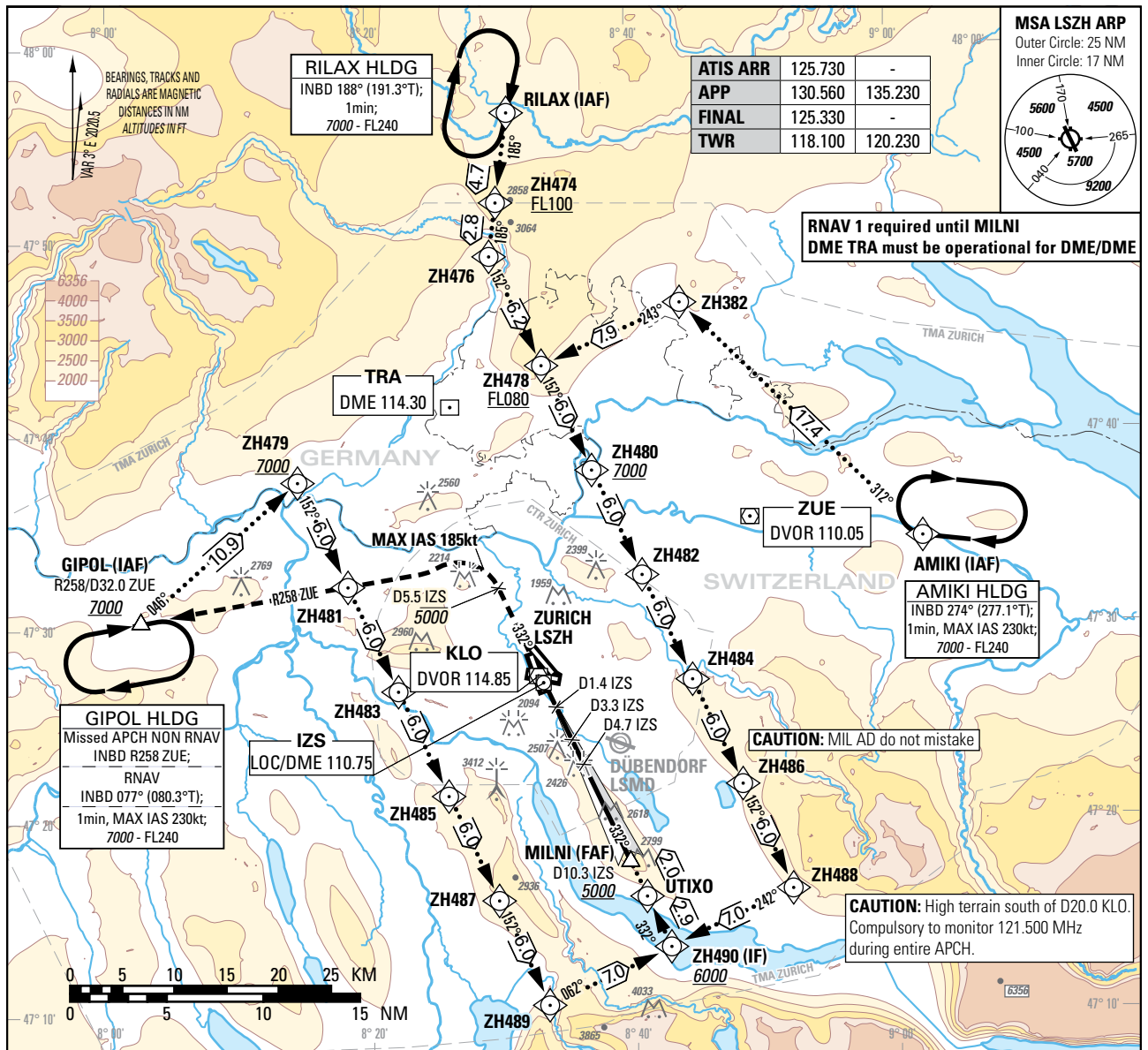


Instrument Approach Chart  
(IAC) - ICAO

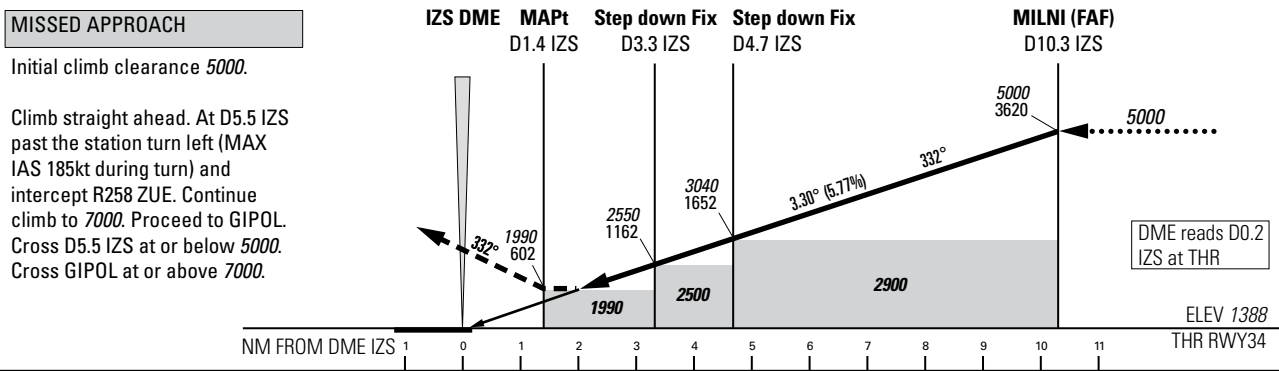
AD ELEV 1417ft

TRANSITION LEVEL by ATC  
TRANSITION ALTITUDE 7000

ZURICH (LSZH)  
LOC RWY 34



RNAV 1 required until MILNI  
DME TRA must be operational for DME/DME



OBSTACLE CLEARANCE ALTITUDE (HEIGHT)	A	B	C	D					
STRAIGHT-IN APPROACH	1990 (602)								
IZS DME	2	3	4	5	6	7	8	9	10
RECOMMENDED CROSSING ALTITUDE (HEIGHT)	2090 (702)	2440 (1052)	2790 (1402)	3140 (1752)	3490 (2102)	3840 (2452)	4190 (2802)	4540 (3152)	4890 (3502)

ROD	GS kt	90	110	130	150
	FT/MIN	526	642	759	876

NOTE	
Level assignments will be issued by ATC.	

COR: completely revised (WEF 19FEB2026)

THIS PAGE INTENTIONALLY LEFT BLANK