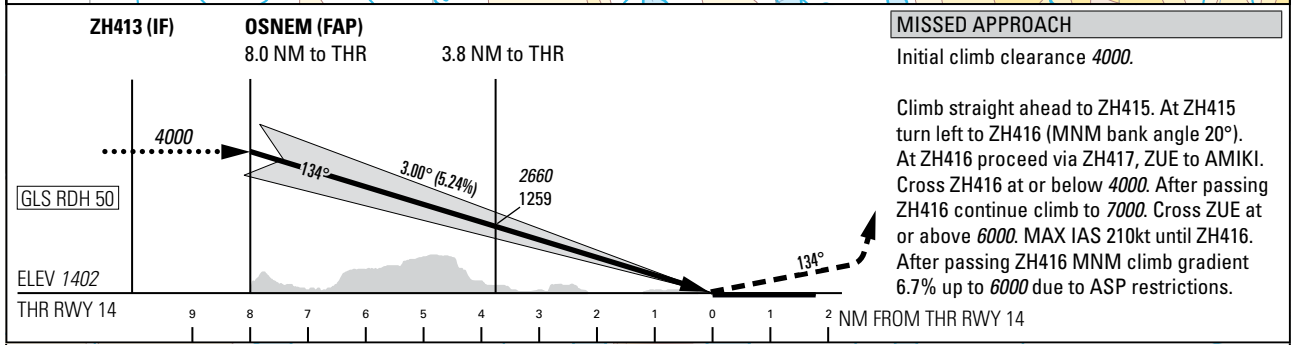
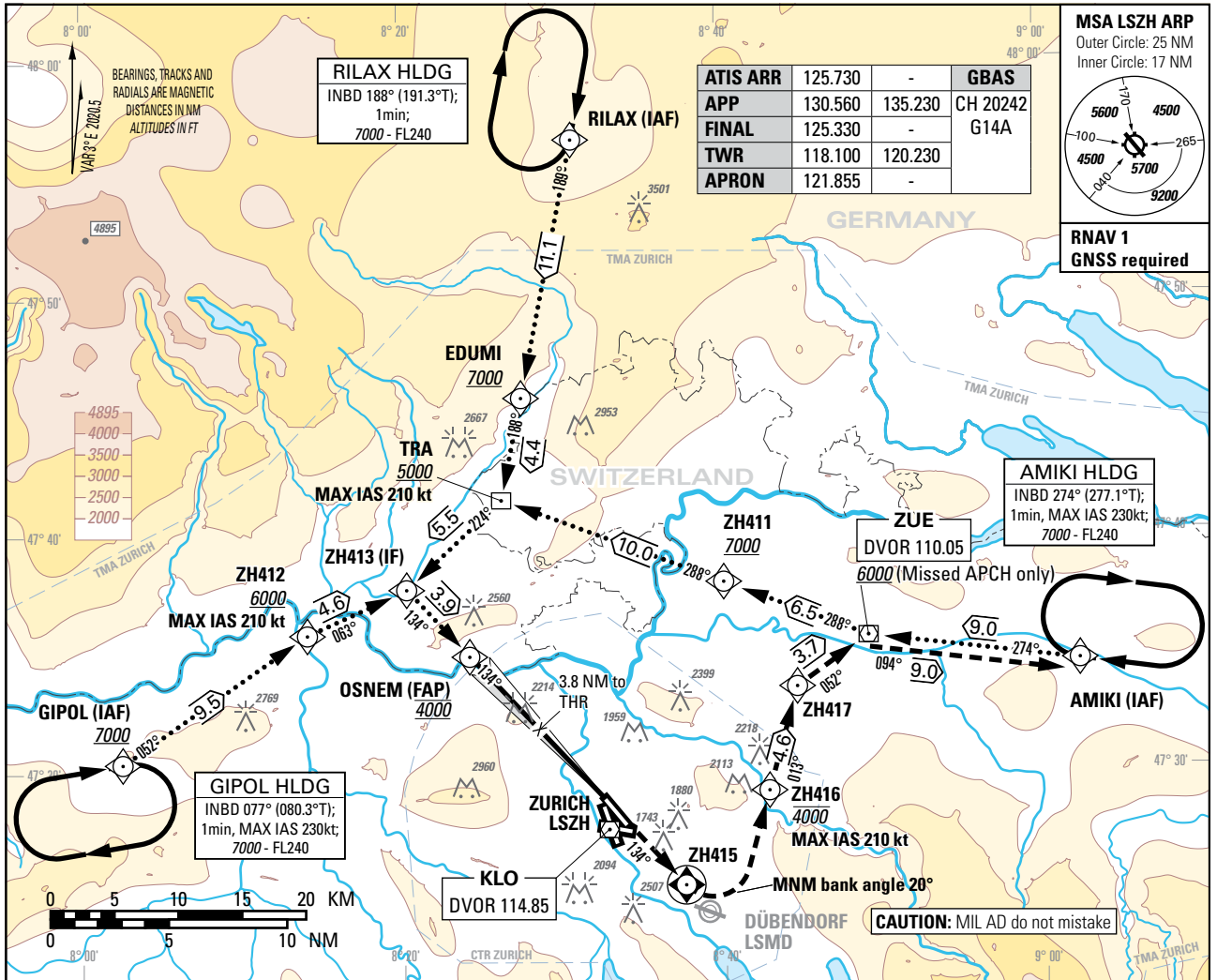


Instrument Approach Chart
(IAC) - ICAO

AD ELEV 1417ft

TRANSITION LEVEL by ATC
TRANSITION ALTITUDE 7000

ZURICH (LSZH)
GLS RWY 14



DIST THR	8	7	6	5	4	3	2	1
recommended CROSSING ALT	4000	3680	3360	3040	2730	2410	2090	1770
recommended CROSSING HGT	2600	2280	1960	1640	1320	1000	690	370

ROD	GS kt	90	110	130	150
	FT/MIN	478	584	690	796

Missed APCH climb gradient requirement	STRAIGHT-IN APPROACH					
	OBSTACLE CLEARANCE ALTITUDE (HEIGHT)					
	To Altitude	A	B	C	D	D_L
2.5%	N/A	1553 (151)	1562 (160)	1573 (171)	1586 (184)	1593 (191)
		DECISION ALTITUDE (HEIGHT)				
2.5%	N/A	1602 (200)				

COR: CTR & TMA LSZH, PBN box, editorial (WEF 20MAR2025)

THIS PAGE INTENTIONALLY LEFT BLANK