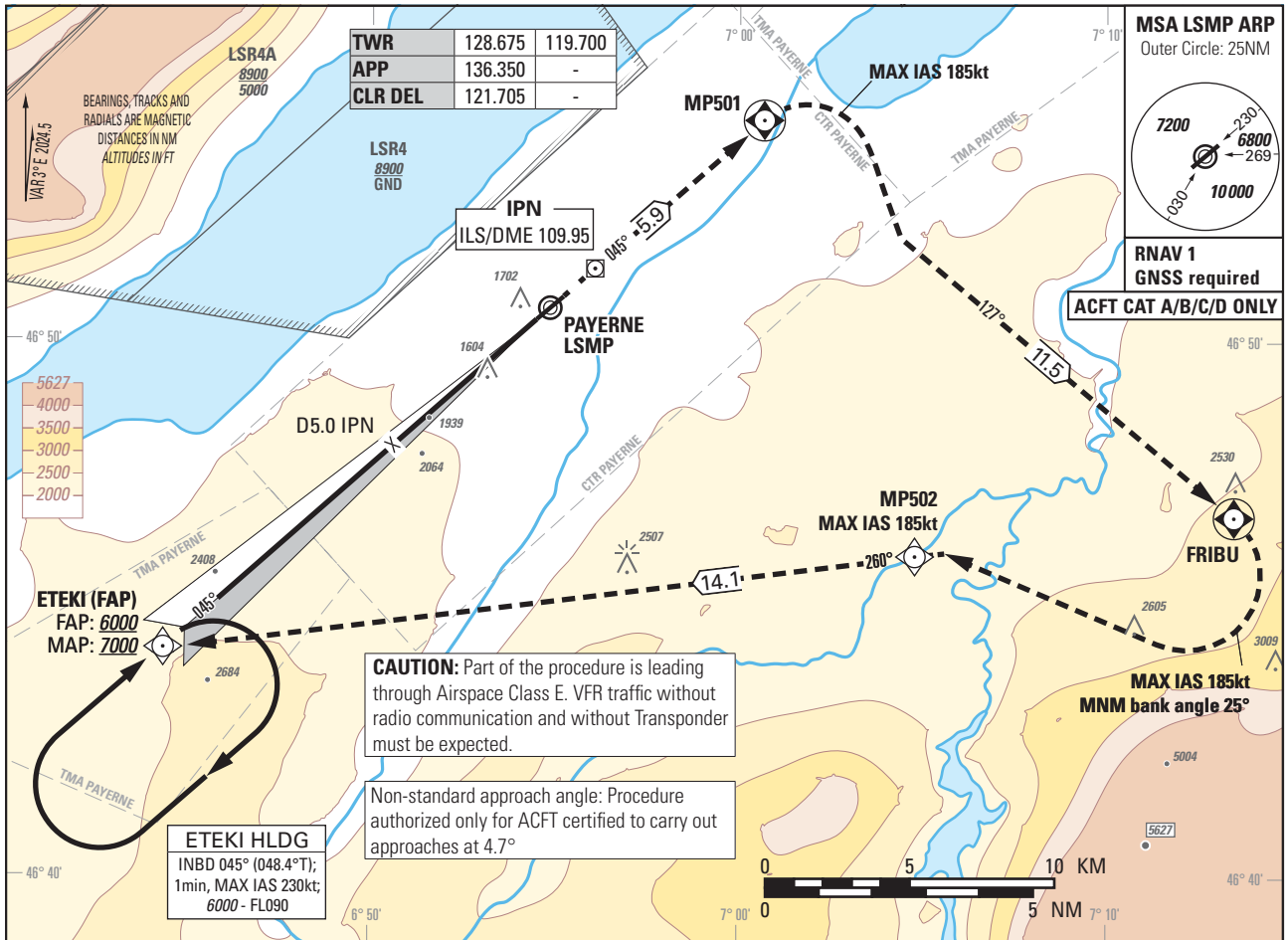


Instrument Approach Chart (IAC) - ICAO

AD ELEV 1466ft

TRANSITION LEVEL by ATC
TRANSITION ALTITUDE 6000

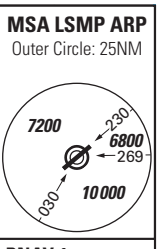
PAYERNE (LSMP)
ILS RWY 05



CAUTION: Part of the procedure is leading through Airspace Class E. VFR traffic without radio communication and without Transponder must be expected.

Non-standard approach angle: Procedure authorized only for ACFT certified to carry out approaches at 4.7°

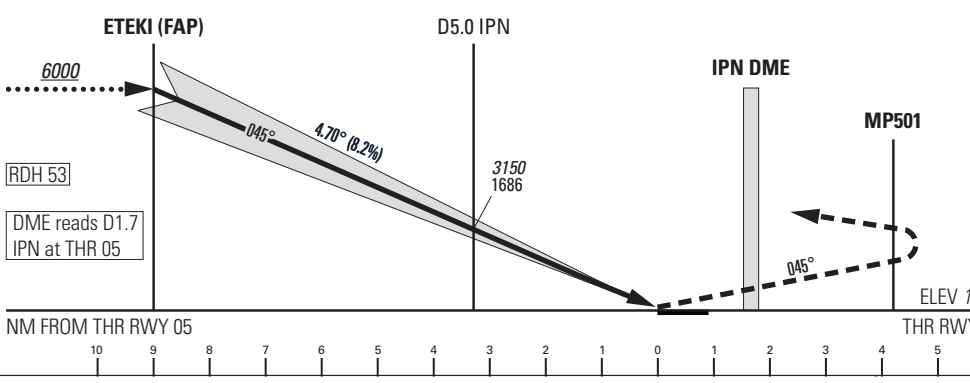
ETEKI HLDG
INBD 045° (048.4°T);
1min, MAX IAS 230kt;
6000 - FL090



RNAV 1
GNSS required
ACFT CAT A/B/C/D ONLY

MISSED APPROACH

Climb to 7000. Straight ahead to MP501 then turn right (MAX IAS 185kt) to FRIBU. At FRIBU turn right (MAX IAS 185kt, MNM bank angle 25°) direct to MP502 and continue to ETEKI.



| Missed APCH climb gradient requirement | STRAIGHT-IN APPROACH | | | |
|--|--------------------------------------|-------------|-------------|-------------|
| | A | B | C | D |
| | OBSTACLE CLEARANCE ALTITUDE (HEIGHT) | | | |
| 2.5% | 2999 (1535) | 3022 (1558) | 3042 (1578) | 3062 (1598) |
| 4.1% to 5900 | 1730 (266) | 1753 (289) | 1772 (308) | 1792 (328) |
| | DECISION ALTITUDE (HEIGHT) | | | |
| 4.1% to 5900 | 1867 (403) | | | |
| CIRCLING ¹⁾ | A | B | C | D |
| OCA(H) | 2120 (654) | 2460 (994) | 2790 (1324) | 2830 (1364) |

| IPN DME | 10.7 | 10.0 | 9.0 | 8.0 | 7.0 | 6.0 | 5.0 |
|-----------------------------|------|------|------|------|------|------|------|
| recommended CROSSING ALT | 6000 | 5640 | 5140 | 4640 | 4140 | 3650 | 3150 |

NOTE
¹⁾ Circling north of RWY only. Circling must remain inside CTR at all time. Remain SE of Lake Neuchatel. MAX distance parallel of RWY for all ACFT Cat: 2NM.

REMARK
- Uncategorized ILS APCH RWY 05 due to OBST limitation and restriction according to non-instrument RWY criteria.
- ILS05 signal fulfills ICAO Annex 10, CAT I specifications.

| ROD | GS kt | 90 | 110 | 130 | 150 |
|-----|--------|-----|-----|------|------|
| | FT/MIN | 749 | 916 | 1082 | 1249 |

COR: chart renaming, PBN box (WEF 23JAN2025)

THIS PAGE INTENTIONALLY LEFT BLANK