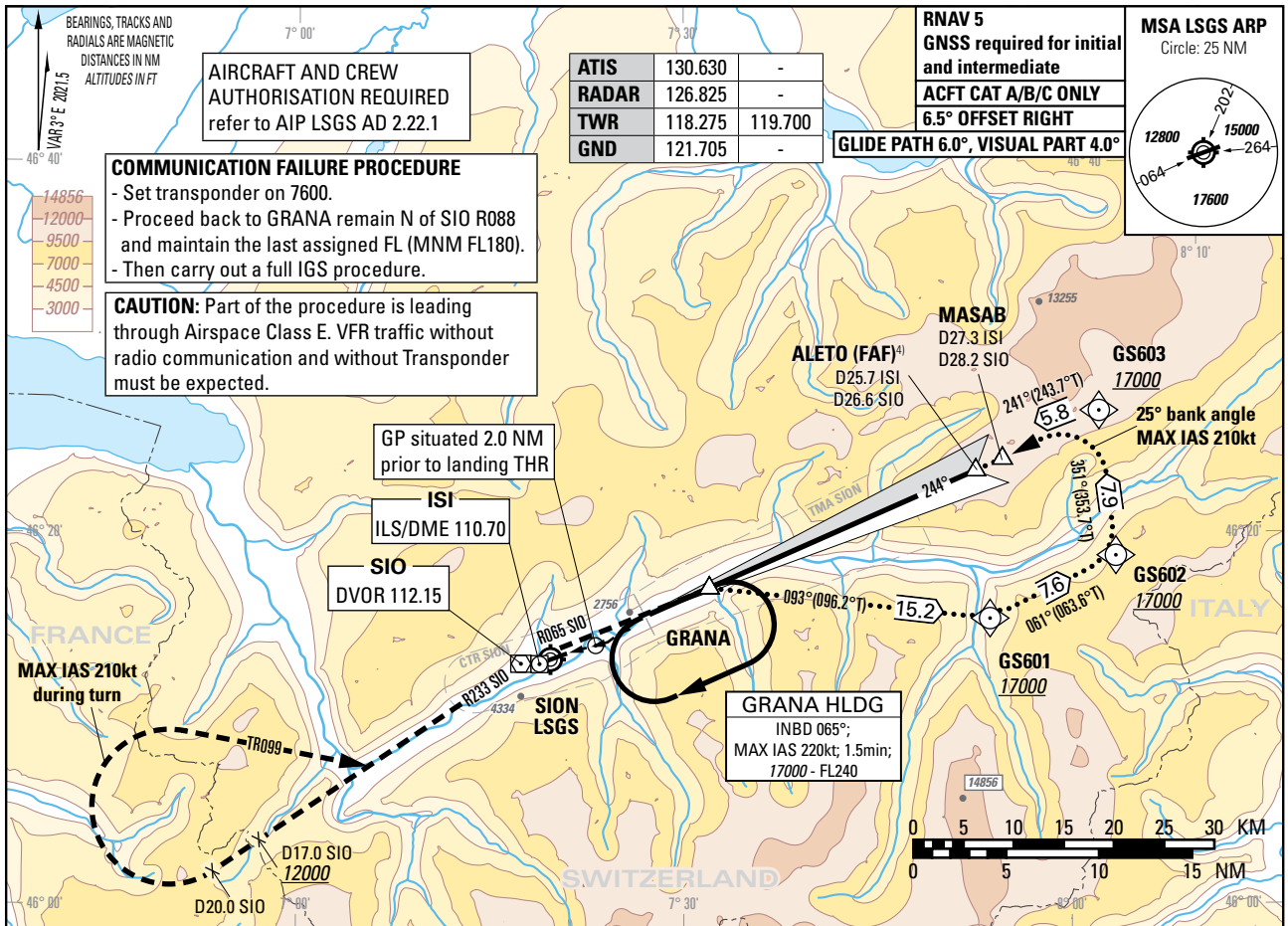


Instrument Approach Chart
(IAC) - ICAO
(IGS instruction: see LSGS AD 2.22)

AD ELEV 1582ft

TRANSITION LEVEL by ATC
TRANSITION ALTITUDE 17000

SION (LSGS)
IGS RWY 25



REMARK
 - APCH PROHIBITED IF GP U/S.
 - Table for temperature deviation from ISA. See LSGS AD 2.23.2.
 - Final APCH offset 6.5° from RCL.
 - If unable to comply with MAX HLDG speed, inform ATC.

CAUTION
 - This is not a standard APCH angle.

NOTE
¹⁾ Special training required. ²⁾ Night circling prohibited. ⁴⁾ At ALETO, GP 15970.
³⁾ ACFT categories A, B with speed limit of 125kt.

COR: chart renaming, PBN box (WEF 23JAN2025)

THIS PAGE INTENTIONALLY LEFT BLANK