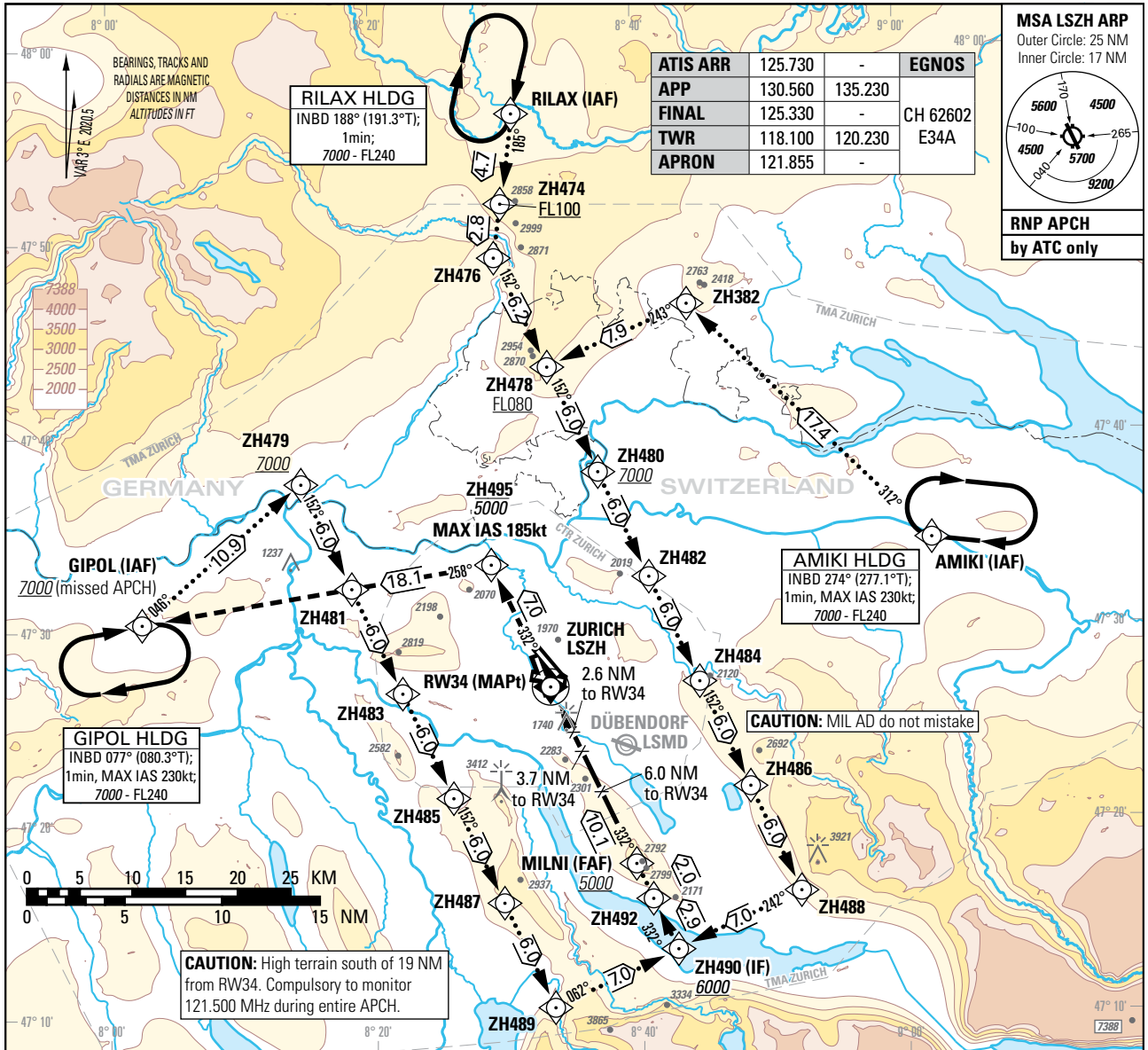


Instrument Approach Chart  
(IAC) - ICAO

AD ELEV 1417ft

TRANSITION LEVEL by ATC  
TRANSITION ALTITUDE 7000

ZURICH (LSZH)  
RNP RWY 34

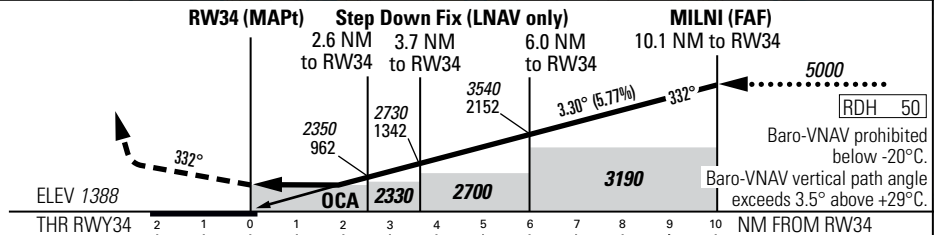


ATIS ARR	125.730	-	EGNOS
APP	130.560	135.230	CH 62602
FINAL	125.330	-	E34A
TWR	118.100	120.230	
APRON	121.855	-	

**MSA LSZH ARP**  
Outer Circle: 25 NM  
Inner Circle: 17 NM

**RNP APCH**  
by ATC only

**MISSED APPROACH**  
Initial climb clearance 5000.  
Climb straight ahead to ZH495.  
Proceed to GIPOL.  
Continue climb to 7000.  
MAX IAS 185kt to ZH495.  
Cross ZH495 at or below 5000.  
Cross GIPOL at or above 7000.



Missed APCH climb gradient requirement	STRAIGHT-IN APPROACH				
	OBSTACLE CLEARANCE ALTITUDE (HEIGHT)				
	A	B	C	D	D <sub>L</sub>
LNAV	1990 (610)				
LNAV/VNAV	1789 (401)	1799 (411)	1812 (424)	1821 (433)	
2.7% to 2100	1542 (154)	1552 (164)	1561 (173)	1574 (186)	1580 (192)
2.5%	1588 (200)	1598 (210)	1609 (221)	1619 (231)	
	DECISION ALTITUDE (HEIGHT)				
2.7% to 2100	1588 (200)				

ROD	GS kt	90	110	130	150
	FT/MIN	526	642	759	876
<b>CAUTION</b> LNAV only: VSS penetrated by buildings up to 1530ft AMSL on the right-hand side of the final approach shortly before THR34.					
<b>NOTE</b> Level assignments will be issued by ATC.					

DIST RWY34	2	3	4	5	6	7	8	9	10	11	12	13
recommended CROSSING ALT	2140	2490	2840	3190	3540	3900	4250	4600	4950	5300	5650	6000
recommended CROSSING HGT	760	1110	1460	1810	2160	2510	2860	3210	3560	3910	4260	4610

COR: CTR & TMA LSZH, PBN box (WEEF 20/MAR2025)

Input data

Operation Type	0
SBAS Provider	1 (EGNOS)
Airport Identifier	LSZH
Runway	34
Runway Letter	0 (None)
Approach Performance Designator	0
Route Indicator	
Reference Path Data Selector	0
Reference Path Identifier	E34A
LTP/FTP Latitude	472657.3930N
LTP/FTP Longitude	0083314.9145E
LTP/FTP Ellipsoidal Height (metres)	470.2
FPAP Latitude	472835.6520N
Delta FPAP Latitude (seconds)	98.2590
FPAP Longitude	0083207.2645E
Delta FPAP Longitude (seconds)	-67.6500
Threshold Crossing Height	50.0
TCH Units Selector	0 (feet)
Glidepath Angle (degrees)	3.30
Course Width (metres)	105.00
Length Offset (metres)	104
HAL (metres)	40.0
VAL (metres)	35.0

Output data

Data Block	10 08 1A 13 0C 22 00 00 01 34 33 05 E2 EE 5C 14 45 C9 AB 03 5E 26 A6 FF 02 7C EF FD F4 01 4A 01 64 0D C8 AF 08 C8 EF 22
Calculated CRC Value	08C8EF22

Required Additional Data

ICAO Code	LS
LTP/FTP Orthometric Height (metres)	423.0