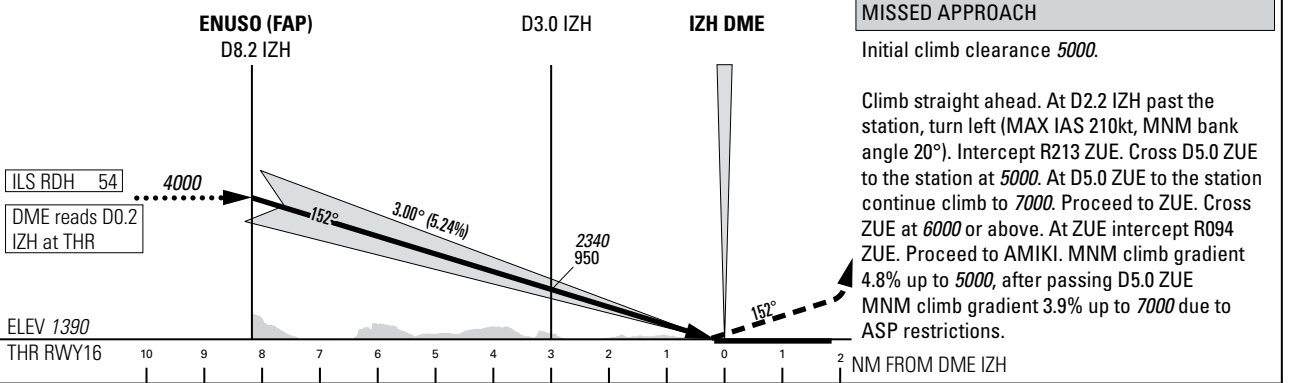
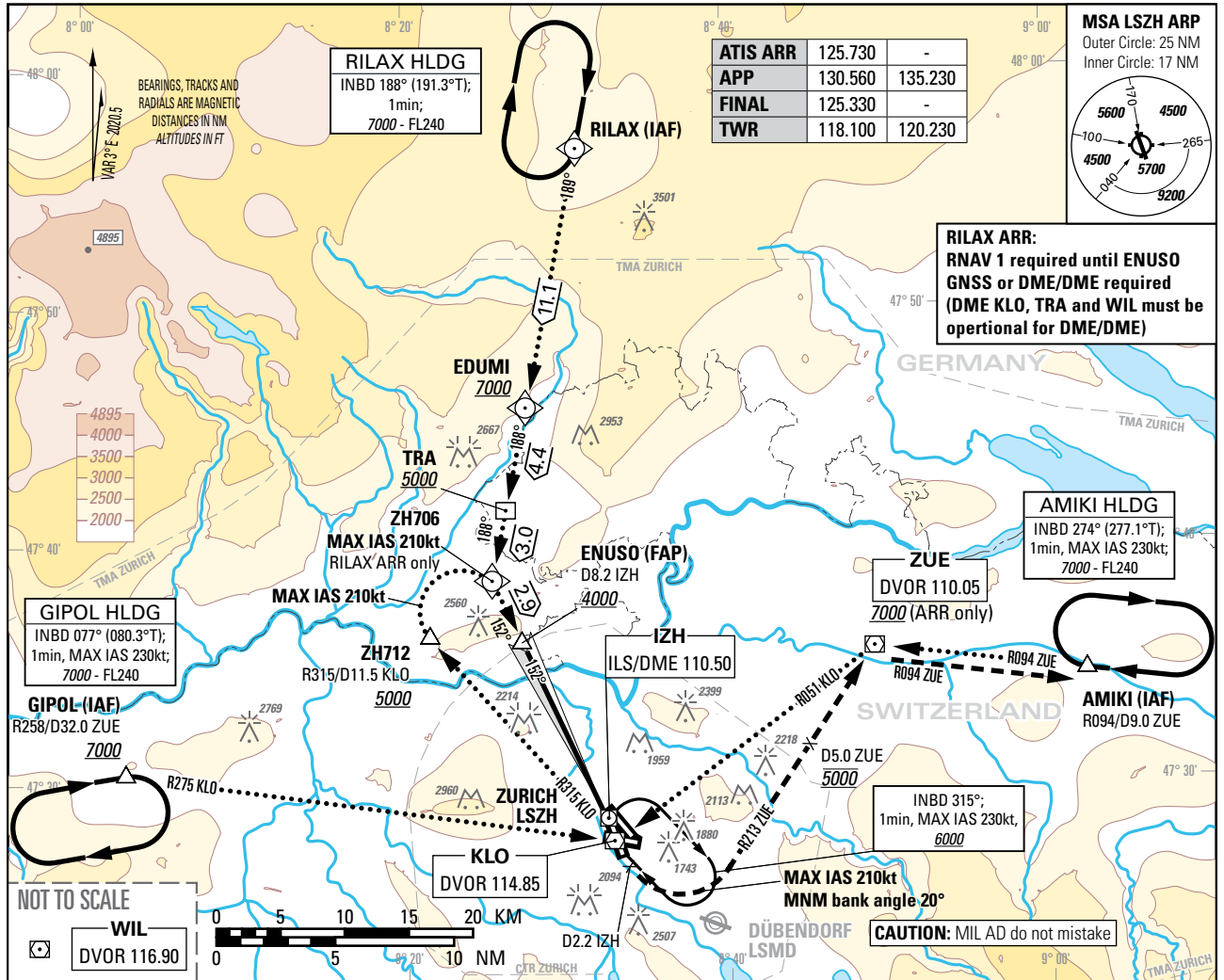


Instrument Approach Chart
(IAC) - ICAO

AD ELEV 1417ft

TRANSITION LEVEL by ATC
TRANSITION ALTITUDE 7000

ZURICH (LSZH)
ILS RWY 16
CAT II & III



| OBSTACLE CLEARANCE ALTITUDE (HEIGHT) | | M/A climb gradient | A | B | C | D | D _L | |
|--|-------------------------------|--------------------|------------|------------|------------|------------|----------------|--|
| CAT | altimeter | | | | | | | |
| CAT I | pressure altimeter | 2.5% | 1803 (413) | 1813 (423) | 1823 (433) | 1832 (442) | | |
| CAT I | pressure altimeter | | | | | | | |
| CAT II | radio altimeter | 4.0% to 2300 | 1446 (56) | 1457 (67) | 1470 (80) | 1488 (98) | 1487 (97) | |
| | radio altimeter and autopilot | | | | | | | |
| DECISION ALTITUDE (HEIGHT) ¹⁾ | | | | | | | | |
| CAT I | pressure altimeter | 2.5% | 1803 (413) | 1813 (423) | 1823 (433) | 1832 (442) | | |
| CAT I | pressure altimeter | | | | | | | |
| CAT II | radio altimeter | 4.0% to 2300 | 1590 (200) | | | | | |
| | radio altimeter and autopilot | | 1490 (100) | | | | | |

| ROD | GS kt | 90 | 110 | 130 | 150 |
|-----|--------|-----|-----|-----|-----|
| | FT/MIN | 478 | 584 | 690 | 796 |

NOTE
¹⁾ Radio altimeter reading at CAT I DH 187ft, at CAT II DH 93ft, for lower minima PPR FOCA.
- Due to GP signal disturbance RWY16, PIC might be REQ by ATC to change APCH Type to LOC or VIS APCH, MET permitting.

COR: CTR & TMA LSZH, PBN box (WEF 20MAR2025)

THIS PAGE INTENTIONALLY LEFT BLANK