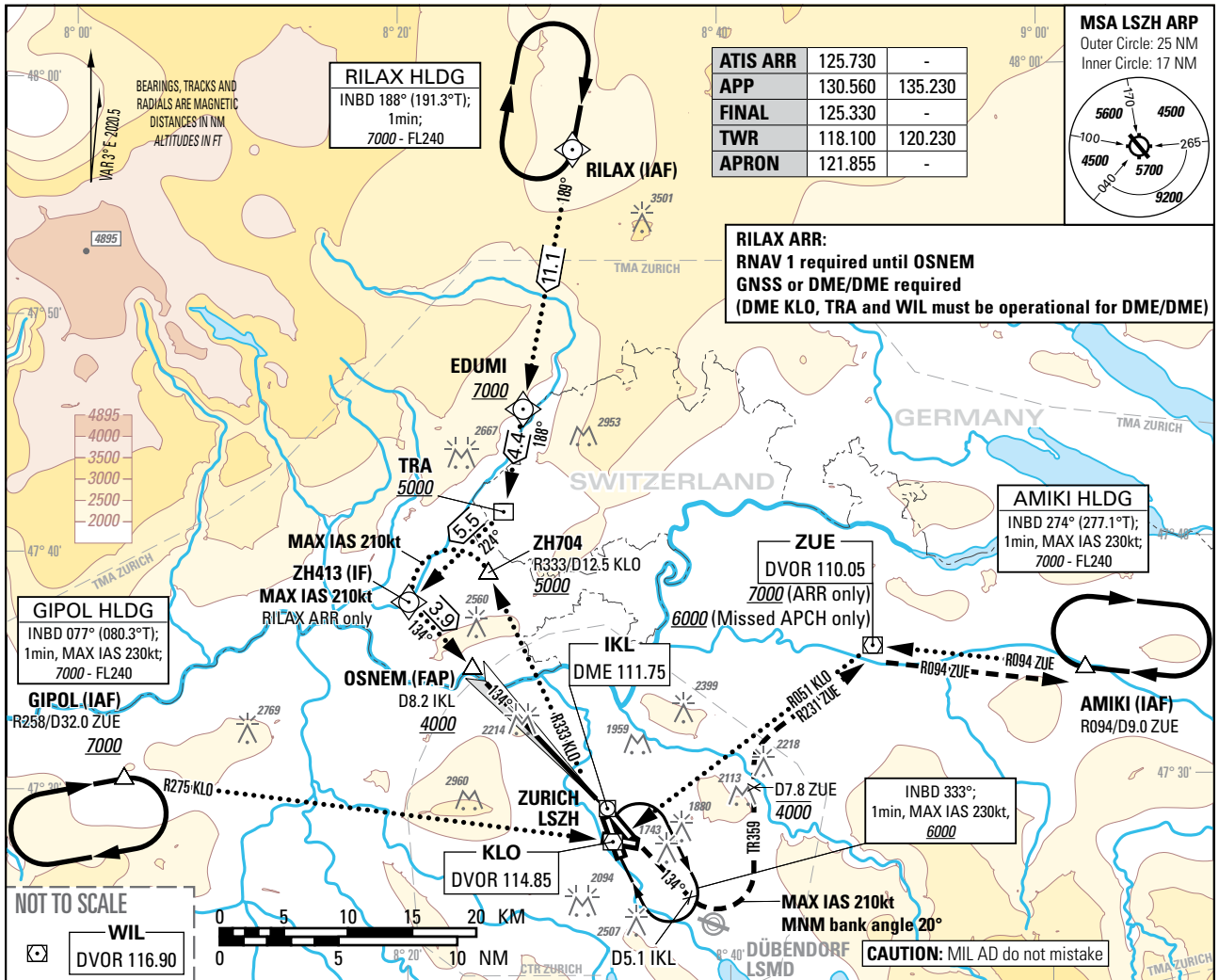


Instrument Approach Chart  
(IAC) - ICAO

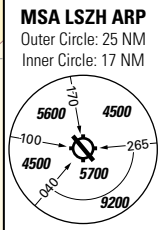
AD ELEV 1417ft

TRANSITION LEVEL by ATC  
TRANSITION ALTITUDE 7000

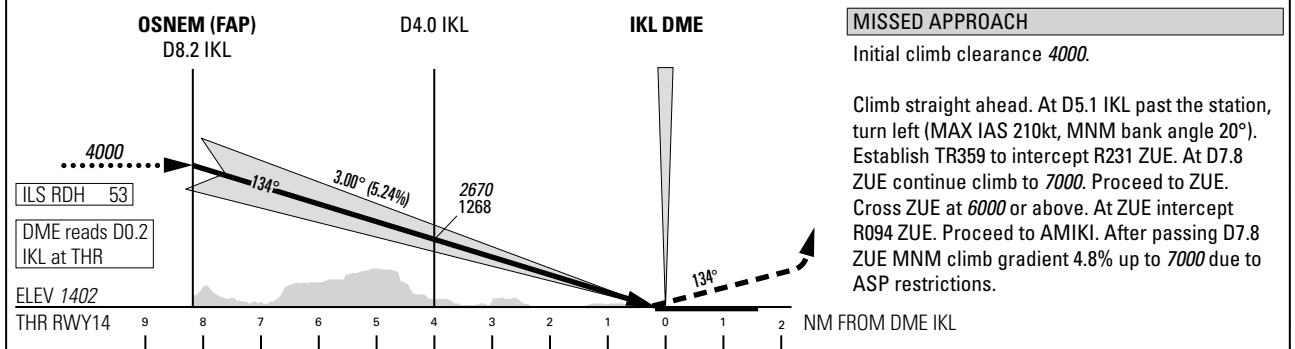
ZURICH (LSZH)  
ILS RWY 14  
CAT II & III



<b>ATIS ARR</b>	125.730	-
<b>APP</b>	130.560	135.230
<b>FINAL</b>	125.330	-
<b>TWR</b>	118.100	120.230
<b>APRON</b>	121.855	-



**RILAX ARR:**  
RNAV 1 required until OSNEM  
GNSS or DME/DME required  
(DME KLO, TRA and WIL must be operational for DME/DME)



OBSTACLE CLEARANCE ALTITUDE (HEIGHT)						
STRAIGHT-IN APPROACH						
	A	B	C	D	D <sub>L</sub>	
CAT I	pressure altimeter	1553 (151)	1562 (160)	1573 (171)	1586 (184)	1593 (191)
CAT II	radio altimeter	1454 (52)	1465 (63)	1477 (75)	1492 (90)	1502 (100)
	radio altimeter and autopilot	1452 (50)	1463 (61)	1477 (75)	1491 (89)	1499 (97)
DECISION ALTITUDE (HEIGHT) <sup>1)</sup>						
CAT I	pressure altimeter	1602 (200)				
CAT II	radio altimeter and autopilot	1502 (100)				

ROD	GS kt	90	110	130	150
	FT/MIN	478	584	690	796

**NOTE**  
<sup>1)</sup> Radio altimeter reading at CAT I DH 187ft, at CAT II DH 95ft, for lower minima PPR FOCA.

COR: CTR & TMA LSZH, PBN box, editorial (WEF 20MAR2025)

THIS PAGE INTENTIONALLY LEFT BLANK