

# SWITZERLAND

**TEL:** +41 (0) 43 931 61 68

Telegraphic address:

**AFTN:** LSSAYOYX

**E-mail:** aip@skyguide.ch

**skyguide**

**AIP Services**  
**CH-8602 WANGEN**  
**BEI DÜBENDORF**

**AIP**

**AMDT 010 2025**

**Effective Date 02 OCT 2025**

## RMK

Filing instruction: Insert this AMDT into AIP after inserting AIRAC AMDT of same effective date, if issued.

### 1. Insert the following pages:

GEN 0.2 - 11/12  
GEN 0.3 - 1/2  
GEN 0.4 - 1/2  
GEN 0.4 - 3/4  
GEN 0.4 - 5/6  
GEN 0.4 - 7/8  
GEN 2.7 - 1/2  
GEN 2.7 - 3/4  
GEN 2.7 - 5/6  
GEN 3.1 - 3/4  
LSZC AD 2.24.10 - 3/4  
LSMP AD 2 - 3/4  
LSMP AD 2 - 7/8  
LSMP AD 2 - 9/10  
LSMP AD 2 -15/16  
LSMP AD 2.24.1 - 1/2

### Destroy the following pages:

02 OCT 2025	GEN 0.2 - 11/12	04 SEP 2025
02 OCT 2025	GEN 0.3 - 1/2	07 AUG 2025
02 OCT 2025	GEN 0.4 - 1/2	04 SEP 2025
02 OCT 2025	GEN 0.4 - 3/4	04 SEP 2025
02 OCT 2025	GEN 0.4 - 5/6	04 SEP 2025
02 OCT 2025	GEN 0.4 - 7/8	04 SEP 2025
02 OCT 2025	GEN 2.7 - 1/2	03 OCT 2024
02 OCT 2025	GEN 2.7 - 3/4	03 OCT 2024
02 OCT 2025	GEN 2.7 - 5/6	03 OCT 2024
02 OCT 2025	GEN 3.1 - 3/4	20 MAR 2025
02 OCT 2025	LSZC AD 2.24.10 - 3/4	04 SEP 2025
02 OCT 2025	LSMP AD 2 - 3/4	28 NOV 2024
02 OCT 2025	LSMP AD 2 - 7/8	20 MAR 2025
02 OCT 2025	LSMP AD 2 - 9/10	AIRAC 21 MAR 2024
02 OCT 2025	LSMP AD 2 -15/16	17 APR 2025
02 OCT 2025	LSMP AD 2.24.1 - 1/2	23 JAN 2025

### 2. Record entry of amendment on page GEN 0.2

### 3. This AIP AMDT incorporates information contained in the following publications:

NOTAM: NIL

AIP SUP: NIL

AIC: NIL

Enroute chart: NIL

### 4. Following SUP and AIRAC SUP are still in force:

Checklist SUP: 003/2024, 008/2024, 002/2025, 003/2025, 004/2025, 005/2025

Checklist AIRAC SUP: NIL

---

THIS PAGE INTENTIONALLY LEFT BLANK

<b>AIP Amendment</b>			
NR/Year	Effective date	Date inserted	Inserted by
006/2021	17-Jun-2021	17-Jun-2021	
007/2021	15-Jul-2021	15-Jul-2021	
008/2021	12-Aug-2021	12-Aug-2021	
009/2021	09-Sep-2021	09-Sep-2021	
010/2021	07-Oct-2021	07-Oct-2021	
011/2021	04-Nov-2021	04-Nov-2021	
012/2021	02-Dec-2021	02-Dec-2021	
013/2021	30-Dec-2021	30-Dec-2021	
001/2022	27-Jan-2022	27-Jan-2022	
002/2022	24-Feb-2022	24-Feb-2022	
003/2022	24-Mar-2022	24-Mar-2022	
004/2022	21-Apr-2022	21-Apr-2022	
005/2022	19-May-2022	19-May-2022	
006/2022	16-Jun-2022	16-Jun-2022	
007/2022	14-Jul-2022	14-Jul-2022	
008/2022	11-Aug-2022	11-Aug-2022	
009/2022	08-Sep-2022	08-Sep-2022	
010/2022	06-Oct-2022	06-Oct-2022	
011/2022	03-Nov-2022	03-Nov-2022	
012/2022	01-Dec-2022	01-Dec-2022	
013/2022	29-Dec-2022	29-Dec-2022	
001/2023	26-Jan-2023	26-Jan-2023	
002/2023	23-Feb-2023	23-Feb-2023	
003/2023	23-Mar-2023	23-Mar-2023	
004/2023	20-Apr-2023	20-Apr-2023	
005/2023	18-May-2023	18-May-2023	
006/2023	15-Jun-2023	15-Jun-2023	
007/2023	13-Jul-2023	13-Jul-2023	
008/2023	10-Aug-2023	10-Aug-2023	
009/2023	07-Sep-2023	07-Sep-2023	
010/2023	05-Oct-2023	05-Oct-2023	
011/2023	02-Nov-2023	02-Nov-2023	
012/2023	30-Nov-2023	30-Nov-2023	
013/2023	28-Dec-2023	28-Dec-2023	
001/2024	25-Jan-2024	25-Jan-2024	
002/2024	22-Feb-2024	22-Feb-2024	
003/2024	21-Mar-2024	21-Mar-2024	
004/2024	18-Apr-2024	18-Apr-2024	
005/2024	16-May-2024	16-May-2024	

<b>AIP Amendment</b>			
NR/Year	Effective date	Date inserted	Inserted by
006/2024	13-Jun-2024	13-Jun-2024	
007/2024	11-Jul-2024	11-Jul-2024	
008/2024	08-Aug-2024	08-Aug-2024	
009/2024	05-Sep-2024	05-Sep-2024	
010/2024	03-Oct-2024	03-Oct-2024	
011/2024	31-Oct-2024	31-Oct-2024	
012/2024	28-Nov-2024	28-Nov-2024	
013/2024	26-Dec-2024	26-Dec-2024	
001/2025	23-Jan-2025	23-Jan-2025	
002/2025	20-Feb-2025	20-Feb-2025	
003/2025	20-Mar-2025	20-Mar-2025	
004/2025	17-Apr-2025	17-Apr-2025	
005/2025	15-May-2025	15-May-2025	
006/2025	12-Jun-2025	12-Jun-2025	
007/2025	10-Jul-2025	10-Jul-2025	
008/2025	07-Aug-2025	07-Aug-2025	
009/2025	04-Sep-2025	04-Sep-2025	
010/2025	02-Oct-2025	02-Oct-2025	

**GEN 0.3 RECORD OF SUPPLEMENTS**

NR/Year	Subject	AIP Section(s) Affected	Period of Validity	Cancellation Record
003/2024	Zurich Airport (LSZH) - Project Reconstruction Apron South - Phase B1 - INNER	LSZH	13-JUN-2024 - 22-DEC-2025	-
008/2024	LSGG Temporary crane in AOC - Type A - RWY 22	LSGG	26-DEC-2024 - UFN	-
002/2025	Zurich Airport (LSZH): Project - Reconstruction Apron South - B1 - TWY-E7 Phase I-III	LSZH	12-JUN-2025 - UFN	-
003/2025	Zurich Airport (LSZH): RWY 14 GLS APCH NOT AVBL	LSZH	10-JUL-2025 - UFN	-
004/2025	Bern-Belp Airport (LSZB): Reduced GLD RWY length	LSZB	07-AUG-2025 - UFN	-
005/2025	Payerne Airport (LSMP): Revised Minimas RWY 23	LSMP	02-OCT-2025 - 01-JUN-2027	-

THIS PAGE INTENTIONALLY LEFT BLANK

## GEN 0.4 CHECKLIST OF AIP PAGES

Page	Date	Page	Date	Page	Date
<b>PART 1 - GENERAL (GEN)</b>					
		GEN 1.7 - 16	07 AUG 2025	GEN 3.3 - 5	AIRAC 13 JUN 2024
		GEN 1.7 - 17	07 AUG 2025	GEN 3.3 - 6	AIRAC 13 JUN 2024
		GEN 1.7 - 18	07 AUG 2025	GEN 3.3 - 7	AIRAC 13 JUN 2024
		GEN 1.7 - 19	07 AUG 2025	GEN 3.3 - 8	AIRAC 13 JUN 2024
GEN 0.1 - 1	10 AUG 2023	GEN 1.7 - 20	07 AUG 2025	GEN 3.4 - 1	02 DEC 2021
GEN 0.1 - 2	10 AUG 2023	GEN 1.7 - 21	07 AUG 2025	GEN 3.4 - 2	02 DEC 2021
GEN 0.1 - 3	15 MAY 2025	GEN 1.7 - 22	07 AUG 2025	GEN 3.4 - 3	21 MAR 2024
GEN 0.1 - 4	15 MAY 2025	GEN 1.7 - 23	16 MAY 2024	GEN 3.4 - 4	21 MAR 2024
GEN 0.2 - 1	AIRAC 26 MAY 2016	GEN 1.7 - 24	16 MAY 2024	GEN 3.4 - 5	AIRAC 20 MAY 2021
GEN 0.2 - 2	AIRAC 26 MAY 2016	GEN 1.7 - 25	20 APR 2023	GEN 3.4 - 6	AIRAC 20 MAY 2021
GEN 0.2 - 3	AIRAC 02 NOV 2023	GEN 1.7 - 26	20 APR 2023	GEN 3.4 - 7	AIRAC 20 MAY 2021
GEN 0.2 - 4	AIRAC 02 NOV 2023	GEN 2.1 - 1	10 AUG 2023	GEN 3.4 - 8	AIRAC 20 MAY 2021
GEN 0.2 - 5	AIRAC 04 SEP 2025	GEN 2.1 - 2	10 AUG 2023	GEN 3.5 - 1	14 JUL 2022
GEN 0.2 - 6	AIRAC 04 SEP 2025	GEN 2.1 - 3	21 JUL 2016	GEN 3.5 - 2	14 JUL 2022
GEN 0.2 - 7	AIRAC 30 NOV 2023	GEN 2.1 - 4	21 JUL 2016	GEN 3.5 - 3	23 APR 2020
GEN 0.2 - 8	AIRAC 30 NOV 2023	GEN 2.2 - 1	28 NOV 2024	GEN 3.5 - 4	23 APR 2020
GEN 0.2 - 9	AIRAC 30 NOV 2023	GEN 2.2 - 2	28 NOV 2024	GEN 3.5 - 5	23 APR 2020
GEN 0.2 - 10	AIRAC 30 NOV 2023	GEN 2.2 - 3	11 JUL 2024	GEN 3.5 - 6	23 APR 2020
GEN 0.2 - 11	02 OCT 2025	GEN 2.2 - 4	11 JUL 2024	GEN 3.5 - 7	17 APR 2025
GEN 0.2 - 12	02 OCT 2025	GEN 2.2 - 5	AIRAC 20 FEB 2025	GEN 3.5 - 8	17 APR 2025
GEN 0.3 - 1	02 OCT 2025	GEN 2.2 - 6	AIRAC 20 FEB 2025	GEN 3.5 - 9	17 APR 2025
GEN 0.3 - 2	02 OCT 2025	GEN 2.2 - 7	AIRAC 20 FEB 2025	GEN 3.5 - 10	17 APR 2025
GEN 0.4 - 1	02 OCT 2025	GEN 2.2 - 8	AIRAC 20 FEB 2025	GEN 3.5 - 11	17 APR 2025
GEN 0.4 - 2	02 OCT 2025	GEN 2.2 - 9	AIRAC 20 FEB 2025	GEN 3.5 - 12	17 APR 2025
GEN 0.4 - 3	02 OCT 2025	GEN 2.2 - 10	AIRAC 20 FEB 2025	GEN 3.6 - 1	16 JUN 2022
GEN 0.4 - 4	02 OCT 2025	GEN 2.3 - 1	17 APR 2025	GEN 3.6 - 2	16 JUN 2022
GEN 0.4 - 5	02 OCT 2025	GEN 2.3 - 2	17 APR 2025	GEN 3.6 - 3	13 JUN 2024
GEN 0.4 - 6	02 OCT 2025	GEN 2.3 - 3	17 APR 2025	GEN 3.6 - 4	13 JUN 2024
GEN 0.4 - 7	02 OCT 2025	GEN 2.3 - 4	17 APR 2025	GEN 3.6 - 5	15 MAY 2025
GEN 0.4 - 8	02 OCT 2025	GEN 2.3 - 5	17 APR 2025	GEN 3.6 - 6	15 MAY 2025
GEN 0.5 - 1	11 AUG 2022	GEN 2.3 - 6	17 APR 2025	GEN 4.1 - 1	26 DEC 2024
GEN 0.5 - 2	11 AUG 2022	GEN 2.3 - 7	17 APR 2025	GEN 4.1 - 2	26 DEC 2024
GEN 0.6 - 1	26 DEC 2024	GEN 2.3 - 8	17 APR 2025	GEN 4.1 - 3	07 SEP 2023
GEN 0.6 - 2	26 DEC 2024	GEN 2.4 - 1	AIRAC 25 JAN 2024	GEN 4.1 - 4	07 SEP 2023
GEN 0.6 - 3	26 DEC 2024	GEN 2.4 - 2	AIRAC 25 JAN 2024	GEN 4.1 - 5	15 MAY 2025
GEN 0.6 - 4	26 DEC 2024	GEN 2.4 - 3	AIRAC 10 JUL 2025	GEN 4.1 - 6	15 MAY 2025
GEN 1.1 - 1	17 JUN 2021	GEN 2.4 - 4	AIRAC 10 JUL 2025	GEN 4.1 - 7	15 MAY 2025
GEN 1.1 - 2	17 JUN 2021	GEN 2.4 - 5	AIRAC 10 JUL 2025	GEN 4.1 - 8	15 MAY 2025
GEN 1.2 - 1	28 NOV 2024	GEN 2.4 - 6	AIRAC 10 JUL 2025	GEN 4.1 - 9	07 SEP 2023
GEN 1.2 - 2	28 NOV 2024	GEN 2.4 - 7	AIRAC 10 JUL 2025	GEN 4.1 - 10	07 SEP 2023
GEN 1.2 - 3	28 NOV 2024	GEN 2.4 - 8	AIRAC 10 JUL 2025	GEN 4.1 - 11	13 JUN 2024
GEN 1.2 - 4	28 NOV 2024	GEN 2.5 - 1	AIRAC 20 MAR 2025	GEN 4.1 - 12	13 JUN 2024
GEN 1.2 - 5	15 MAY 2025	GEN 2.5 - 2	AIRAC 20 MAR 2025	GEN 4.1 - 13	13 JUN 2024
GEN 1.2 - 6	15 MAY 2025	GEN 2.6 - 1	10 AUG 2023	GEN 4.1 - 14	13 JUN 2024
GEN 1.2 - 7	28 NOV 2024	GEN 2.6 - 2	10 AUG 2023	GEN 4.1 - 15	26 DEC 2024
GEN 1.2 - 8	28 NOV 2024	GEN 2.6 - 3	10 DEC 2015	GEN 4.1 - 16	26 DEC 2024
GEN 1.2 - 9	14 JUL 2022	GEN 2.6 - 4	10 DEC 2015	GEN 4.1 - 17	26 DEC 2024
GEN 1.2 - 10	14 JUL 2022	GEN 2.7 - 1	02 OCT 2025	GEN 4.1 - 18	26 DEC 2024
GEN 1.3 - 1	11 DEC 2014	GEN 2.7 - 2	02 OCT 2025	GEN 4.1 - 19	26 DEC 2024
GEN 1.3 - 2	11 DEC 2014	GEN 2.7 - 3	02 OCT 2025	GEN 4.1 - 20	26 DEC 2024
GEN 1.4 - 1	11 DEC 2014	GEN 2.7 - 4	02 OCT 2025	GEN 4.1 - 21	26 DEC 2024
GEN 1.4 - 2	11 DEC 2014	GEN 2.7 - 5	02 OCT 2025	GEN 4.1 - 22	26 DEC 2024
GEN 1.5 - 1	08 AUG 2024	GEN 2.7 - 6	02 OCT 2025	GEN 4.1 - 23	15 MAY 2025
GEN 1.5 - 2	08 AUG 2024	GEN 3.1 - 1	10 AUG 2023	GEN 4.1 - 24	15 MAY 2025
GEN 1.6 - 1	25 MAR 2021	GEN 3.1 - 2	10 AUG 2023	GEN 4.1 - 25	26 DEC 2024
GEN 1.6 - 2	25 MAR 2021	GEN 3.1 - 3	02 OCT 2025	GEN 4.1 - 26	26 DEC 2024
GEN 1.7 - 1	07 AUG 2025	GEN 3.1 - 4	02 OCT 2025	GEN 4.1 - 27	26 DEC 2024
GEN 1.7 - 2	07 AUG 2025	GEN 3.1 - 5	18 APR 2024	GEN 4.1 - 28	26 DEC 2024
GEN 1.7 - 3	07 AUG 2025	GEN 3.1 - 6	18 APR 2024	GEN 4.1 - 29	26 DEC 2024
GEN 1.7 - 4	07 AUG 2025	GEN 3.1 - 7	18 APR 2024	GEN 4.1 - 30	26 DEC 2024
GEN 1.7 - 5	07 AUG 2025	GEN 3.1 - 8	18 APR 2024	GEN 4.1 - 31	26 DEC 2024
GEN 1.7 - 6	07 AUG 2025	GEN 3.2 - 1	AIRAC 01 DEC 2022	GEN 4.1 - 32	26 DEC 2024
GEN 1.7 - 7	07 AUG 2025	GEN 3.2 - 2	AIRAC 01 DEC 2022	GEN 4.1 - 33	26 DEC 2024
GEN 1.7 - 8	07 AUG 2025	GEN 3.2 - 3	11 DEC 2014	GEN 4.1 - 34	26 DEC 2024
GEN 1.7 - 9	07 AUG 2025	GEN 3.2 - 4	11 DEC 2014	GEN 4.1 - 35	26 DEC 2024
GEN 1.7 - 10	07 AUG 2025	GEN 3.3 - 1	AIRAC 29 DEC 2022	GEN 4.1 - 36	26 DEC 2024
GEN 1.7 - 11	07 AUG 2025	GEN 3.3 - 2	AIRAC 29 DEC 2022	GEN 4.1 - 37	26 DEC 2024
GEN 1.7 - 12	07 AUG 2025	GEN 3.3 - 3	09 SEP 2021	GEN 4.1 - 38	26 DEC 2024
GEN 1.7 - 13	07 AUG 2025	GEN 3.3 - 4	09 SEP 2021	GEN 4.1 - 39	10 JUL 2025
GEN 1.7 - 14	07 AUG 2025				
GEN 1.7 - 15	07 AUG 2025				

Page	Date	Page	Date	Page	Date
GEN 4.1 - 40	10 JUL 2025	GEN 4.2 - 17	20 FEB 2025	ENR 1.12 - 2	28 MAY 2015
GEN 4.1 - 41	10 JUL 2025	GEN 4.2 - 18	20 FEB 2025	ENR 1.12 - 3	28 MAY 2015
GEN 4.1 - 42	10 JUL 2025	GEN 4.2 - 19	30 MAR 2017	ENR 1.12 - 4	28 MAY 2015
GEN 4.1 - 43	10 JUL 2025	GEN 4.2 - 20	30 MAR 2017	ENR 1.13 - 1	28 MAY 2015
GEN 4.1 - 44	10 JUL 2025	GEN 4.2 - 21	30 MAR 2017	ENR 1.13 - 2	28 MAY 2015
GEN 4.1 - 45	10 JUL 2025	GEN 4.2 - 22	30 MAR 2017	ENR 1.14 - 1	10 AUG 2023
GEN 4.1 - 46	10 JUL 2025			ENR 1.14 - 2	10 AUG 2023
GEN 4.1 - 47	10 JUL 2025			ENR 2.1 - 1	AIRAC 20 FEB 2025
GEN 4.1 - 48	10 JUL 2025	<b>PART 2 - EN-ROUTE (ENR)</b>		ENR 2.1 - 2	AIRAC 20 FEB 2025
GEN 4.1 - 49	26 DEC 2024			ENR 2.1 - 3	AIRAC 20 MAR 2025
GEN 4.1 - 50	26 DEC 2024	ENR 0.1 - 1	10 AUG 2023	ENR 2.1 - 4	AIRAC 20 MAR 2025
GEN 4.1 - 51	26 DEC 2024	ENR 0.1 - 2	10 AUG 2023	ENR 2.1 - 5	AIRAC 20 MAR 2025
GEN 4.1 - 52	26 DEC 2024	ENR 0.2 - 1	26 JAN 2023	ENR 2.1 - 6	AIRAC 20 MAR 2025
GEN 4.1 - 53	26 DEC 2024	ENR 0.2 - 2	26 JAN 2023	ENR 2.1 - 7	AIRAC 20 MAR 2025
GEN 4.1 - 54	26 DEC 2024	ENR 0.3 - 1	26 JAN 2023	ENR 2.1 - 8	AIRAC 20 MAR 2025
GEN 4.1 - 55	26 DEC 2024	ENR 0.3 - 2	26 JAN 2023	ENR 2.1 - 9	AIRAC 20 MAR 2025
GEN 4.1 - 56	26 DEC 2024	ENR 0.4 - 1	26 JAN 2023	ENR 2.1 - 10	AIRAC 20 MAR 2025
GEN 4.1 - 57	26 DEC 2024	ENR 0.4 - 2	26 JAN 2023	ENR 2.1 - 11	AIRAC 20 MAR 2025
GEN 4.1 - 58	26 DEC 2024	ENR 0.5 - 1	26 JAN 2023	ENR 2.1 - 12	AIRAC 20 MAR 2025
GEN 4.1 - 59	26 DEC 2024	ENR 0.5 - 2	26 JAN 2023	ENR 2.1 - 13	17 APR 2025
GEN 4.1 - 60	26 DEC 2024	ENR 0.6 - 1	15 MAY 2025	ENR 2.1 - 14	17 APR 2025
GEN 4.1 - 61	26 DEC 2024	ENR 0.6 - 2	15 MAY 2025	ENR 2.1 - 15	AIRAC 25 MAR 2021
GEN 4.1 - 62	26 DEC 2024	ENR 0.6 - 3	15 MAY 2025	ENR 2.1 - 16	AIRAC 25 MAR 2021
GEN 4.1 - 63	26 DEC 2024	ENR 0.6 - 4	15 MAY 2025	ENR 2.1 - 17	AIRAC 25 MAR 2021
GEN 4.1 - 64	26 DEC 2024	ENR 1.1 - 1	AIRAC 31 OCT 2024	ENR 2.1 - 18	AIRAC 25 MAR 2021
GEN 4.1 - 65	26 DEC 2024	ENR 1.1 - 2	AIRAC 31 OCT 2024	ENR 2.1 - 19	AIRAC 20 MAR 2025
GEN 4.1 - 66	26 DEC 2024	ENR 1.1 - 3	15 MAY 2025	ENR 2.1 - 20	AIRAC 20 MAR 2025
GEN 4.1 - 67	26 DEC 2024	ENR 1.1 - 4	15 MAY 2025	ENR 2.1 - 21	AIRAC 21 MAR 2024
GEN 4.1 - 68	26 DEC 2024	ENR 1.2 - 1	20 AUG 2015	ENR 2.1 - 22	AIRAC 21 MAR 2024
GEN 4.1 - 69	26 DEC 2024	ENR 1.2 - 2	20 AUG 2015	ENR 2.1 - 23	AIRAC 20 MAR 2025
GEN 4.1 - 70	26 DEC 2024	ENR 1.3 - 1	15 MAY 2025	ENR 2.1 - 24	AIRAC 20 MAR 2025
GEN 4.1 - 71	26 DEC 2024	ENR 1.3 - 2	15 MAY 2025	ENR 2.1 - 25	AIRAC 20 MAR 2025
GEN 4.1 - 72	26 DEC 2024	ENR 1.3 - 3	15 MAY 2025	ENR 2.1 - 26	AIRAC 20 MAR 2025
GEN 4.1 - 73	26 DEC 2024	ENR 1.3 - 4	15 MAY 2025	ENR 2.2 - 1	AIRAC 20 FEB 2025
GEN 4.1 - 74	26 DEC 2024	ENR 1.4 - 1	AIRAC 20 MAR 2025	ENR 2.2 - 2	AIRAC 20 FEB 2025
GEN 4.1 - 75	26 DEC 2024	ENR 1.4 - 2	AIRAC 20 MAR 2025	ENR 2.2 - 3	20 MAR 2025
GEN 4.1 - 76	26 DEC 2024	ENR 1.4 - 3	11 JUL 2024	ENR 2.2 - 4	20 MAR 2025
GEN 4.1 - 77	26 DEC 2024	ENR 1.4 - 4	11 JUL 2024	ENR 2.2 - 5	20 MAR 2025
GEN 4.1 - 78	26 DEC 2024	ENR 1.4 - 5	10 JUL 2025	ENR 2.2 - 6	20 MAR 2025
GEN 4.1 - 79	26 DEC 2024	ENR 1.4 - 6	10 JUL 2025	ENR 3.1 - 1	13 JUN 2024
GEN 4.1 - 80	26 DEC 2024	ENR 1.5 - 1	20 FEB 2025	ENR 3.1 - 2	13 JUN 2024
GEN 4.1 - 81	26 DEC 2024	ENR 1.5 - 2	20 FEB 2025	ENR 3.2 - 1	23 JAN 2025
GEN 4.1 - 82	26 DEC 2024	ENR 1.5 - 3	23 APR 2020	ENR 3.2 - 2	23 JAN 2025
GEN 4.1 - 83	15 MAY 2025	ENR 1.5 - 4	23 APR 2020	ENR 3.2 - 3	23 JAN 2025
GEN 4.1 - 84	15 MAY 2025	ENR 1.6 - 1	15 MAY 2025	ENR 3.2 - 4	23 JAN 2025
GEN 4.1 - 85	26 DEC 2024	ENR 1.6 - 2	15 MAY 2025	ENR 3.2 - 5	23 JAN 2025
GEN 4.1 - 86	26 DEC 2024	ENR 1.6 - 3	15 MAY 2025	ENR 3.2 - 6	23 JAN 2025
GEN 4.1 - 87	26 DEC 2024	ENR 1.6 - 4	15 MAY 2025	ENR 3.2 - 7	23 JAN 2025
GEN 4.1 - 88	26 DEC 2024	ENR 1.7 - 1	15 MAY 2025	ENR 3.2 - 8	23 JAN 2025
GEN 4.1 - 89	26 DEC 2024	ENR 1.7 - 2	15 MAY 2025	ENR 3.2 - 9	23 JAN 2025
GEN 4.1 - 90	26 DEC 2024	ENR 1.7 - 3	AIRAC 22 APR 2021	ENR 3.2 - 10	23 JAN 2025
GEN 4.1 - 91	26 DEC 2024	ENR 1.7 - 4	AIRAC 22 APR 2021	ENR 3.2 - 11	23 JAN 2025
GEN 4.1 - 92	26 DEC 2024	ENR 1.7 - 5	15 MAY 2025	ENR 3.2 - 12	23 JAN 2025
GEN 4.1 - 93	10 JUL 2025	ENR 1.7 - 6	15 MAY 2025	ENR 3.2 - 13	23 JAN 2025
GEN 4.1 - 94	10 JUL 2025	ENR 1.8 - 1	08 AUG 2024	ENR 3.2 - 14	23 JAN 2025
GEN 4.2 - 1	20 FEB 2025	ENR 1.8 - 2	08 AUG 2024	ENR 3.2 - 15	23 JAN 2025
GEN 4.2 - 2	20 FEB 2025	ENR 1.9 - 1	AIRAC 22 FEB 2024	ENR 3.2 - 16	23 JAN 2025
GEN 4.2 - 3	30 MAR 2017	ENR 1.9 - 2	AIRAC 22 FEB 2024	ENR 3.2 - 17	AIRAC 04 SEP 2025
GEN 4.2 - 4	30 MAR 2017	ENR 1.9 - 3	10 JUL 2025	ENR 3.2 - 18	AIRAC 04 SEP 2025
GEN 4.2 - 5	30 MAR 2017	ENR 1.9 - 4	10 JUL 2025	ENR 3.2 - 19	AIRAC 04 SEP 2025
GEN 4.2 - 6	30 MAR 2017	ENR 1.10 - 1	AIRAC 20 FEB 2025	ENR 3.2 - 20	AIRAC 04 SEP 2025
GEN 4.2 - 7	30 MAR 2017	ENR 1.10 - 2	AIRAC 20 FEB 2025	ENR 3.2 - 21	AIRAC 04 SEP 2025
GEN 4.2 - 8	30 MAR 2017	ENR 1.10 - 3	21 APR 2022	ENR 3.2 - 22	AIRAC 04 SEP 2025
GEN 4.2 - 9	30 MAR 2017	ENR 1.10 - 4	21 APR 2022	ENR 3.2 - 23	23 JAN 2025
GEN 4.2 - 10	30 MAR 2017	ENR 1.10 - 5	20 MAR 2025	ENR 3.2 - 24	23 JAN 2025
GEN 4.2 - 11	20 FEB 2025	ENR 1.10 - 6	20 MAR 2025	ENR 3.2 - 25	23 JAN 2025
GEN 4.2 - 12	20 FEB 2025	ENR 1.11 - 1	AIRAC 31 OCT 2024	ENR 3.2 - 26	23 JAN 2025
GEN 4.2 - 13	20 FEB 2025	ENR 1.11 - 2	AIRAC 31 OCT 2024	ENR 3.2 - 27	AIRAC 04 SEP 2025
GEN 4.2 - 14	20 FEB 2025	ENR 1.11 - 3	28 MAY 2015	ENR 3.2 - 28	AIRAC 04 SEP 2025
GEN 4.2 - 15	20 FEB 2025	ENR 1.11 - 4	28 MAY 2015	ENR 3.2 - 29	23 JAN 2025
GEN 4.2 - 16	20 FEB 2025	ENR 1.12 - 1	28 MAY 2015	ENR 3.2 - 30	23 JAN 2025

Page	Date	Page	Date	Page	Date
ENR 3.2 - 31	23 JAN 2025	ENR 3.3 - 14	AIRAC 15 MAY 2025	ENR 5.2 - 23	AIRAC 21 MAR 2024
ENR 3.2 - 32	23 JAN 2025	ENR 3.3 - 15	AIRAC 15 MAY 2025	ENR 5.2 - 24	AIRAC 21 MAR 2024
ENR 3.2 - 33	23 JAN 2025	ENR 3.3 - 16	AIRAC 15 MAY 2025	ENR 5.2 - 25	AIRAC 21 MAR 2024
ENR 3.2 - 34	23 JAN 2025	ENR 3.3 - 17	AIRAC 15 MAY 2025	ENR 5.2 - 26	AIRAC 21 MAR 2024
ENR 3.2 - 35	23 JAN 2025	ENR 3.3 - 18	AIRAC 15 MAY 2025	ENR 5.2 - 27	AIRAC 21 MAR 2024
ENR 3.2 - 36	23 JAN 2025	ENR 3.4 - 1	13 JUN 2024	ENR 5.2 - 28	AIRAC 21 MAR 2024
ENR 3.2 - 37	23 JAN 2025	ENR 3.4 - 2	13 JUN 2024	ENR 5.2 - 29	AIRAC 21 MAR 2024
ENR 3.2 - 38	23 JAN 2025	ENR 4.1 - 1	AIRAC 20 MAR 2025	ENR 5.2 - 30	AIRAC 21 MAR 2024
ENR 3.2 - 39	23 JAN 2025	ENR 4.1 - 2	AIRAC 20 MAR 2025	ENR 5.2 - 31	AIRAC 10 JUL 2025
ENR 3.2 - 40	23 JAN 2025	ENR 4.2 - 1	26 JAN 2023	ENR 5.2 - 32	AIRAC 10 JUL 2025
ENR 3.2 - 41	23 JAN 2025	ENR 4.2 - 2	26 JAN 2023	ENR 5.2 - 33	AIRAC 23 MAR 2023
ENR 3.2 - 42	23 JAN 2025	ENR 4.3 - 1	15 JUL 2021	ENR 5.2 - 34	AIRAC 23 MAR 2023
ENR 3.2 - 43	AIRAC 15 MAY 2025	ENR 4.3 - 2	15 JUL 2021	ENR 5.2 - 35	AIRAC 23 MAR 2023
ENR 3.2 - 44	AIRAC 15 MAY 2025	ENR 4.4 - 1	AIRAC 13 JUN 2024	ENR 5.2 - 36	AIRAC 23 MAR 2023
ENR 3.2 - 45	23 JAN 2025	ENR 4.4 - 2	AIRAC 13 JUN 2024	ENR 5.2 - 37	AIRAC 21 MAR 2024
ENR 3.2 - 46	23 JAN 2025	ENR 4.4 - 3	AIRAC 31 OCT 2024	ENR 5.2 - 38	AIRAC 21 MAR 2024
ENR 3.2 - 47	23 JAN 2025	ENR 4.4 - 4	AIRAC 31 OCT 2024	ENR 5.2 - 39	20 MAR 2025
ENR 3.2 - 48	23 JAN 2025	ENR 4.4 - 5	AIRAC 31 OCT 2024	ENR 5.2 - 40	20 MAR 2025
ENR 3.2 - 49	23 JAN 2025	ENR 4.4 - 6	AIRAC 31 OCT 2024	ENR 5.2 - 41	20 MAR 2025
ENR 3.2 - 50	23 JAN 2025	ENR 4.4 - 7	AIRAC 31 OCT 2024	ENR 5.2 - 42	20 MAR 2025
ENR 3.2 - 51	AIRAC 04 SEP 2025	ENR 4.4 - 8	AIRAC 31 OCT 2024	ENR 5.3 - 1	15 MAY 2025
ENR 3.2 - 52	AIRAC 04 SEP 2025	ENR 4.4 - 9	AIRAC 31 OCT 2024	ENR 5.3 - 2	15 MAY 2025
ENR 3.2 - 53	AIRAC 04 SEP 2025	ENR 4.4 - 10	AIRAC 31 OCT 2024	ENR 5.4 - 1	18 APR 2024
ENR 3.2 - 54	AIRAC 04 SEP 2025	ENR 4.4 - 11	AIRAC 31 OCT 2024	ENR 5.4 - 2	18 APR 2024
ENR 3.2 - 55	23 JAN 2025	ENR 4.4 - 12	AIRAC 31 OCT 2024	ENR 5.5 - 1	AIRAC 21 MAR 2024
ENR 3.2 - 56	23 JAN 2025	ENR 4.4 - 13	AIRAC 23 JAN 2025	ENR 5.5 - 2	AIRAC 21 MAR 2024
ENR 3.2 - 57	23 JAN 2025	ENR 4.4 - 14	AIRAC 23 JAN 2025	ENR 5.5 - 3	AIRAC 21 MAR 2024
ENR 3.2 - 58	23 JAN 2025	ENR 4.5 - 1	26 JAN 2023	ENR 5.5 - 4	AIRAC 21 MAR 2024
ENR 3.2 - 59	23 JAN 2025	ENR 4.5 - 2	26 JAN 2023	ENR 5.5 - 5	AIRAC 24 MAR 2022
ENR 3.2 - 60	23 JAN 2025	ENR 5.1 - 1	AIRAC 21 MAR 2024	ENR 5.5 - 6	AIRAC 24 MAR 2022
ENR 3.2 - 61	AIRAC 15 MAY 2025	ENR 5.1 - 2	AIRAC 21 MAR 2024	ENR 5.5 - 7	AIRAC 24 MAR 2022
ENR 3.2 - 62	AIRAC 15 MAY 2025	ENR 5.1 - 3	AIRAC 21 MAR 2024	ENR 5.5 - 8	AIRAC 24 MAR 2022
ENR 3.2 - 63	23 JAN 2025	ENR 5.1 - 4	AIRAC 21 MAR 2024	ENR 5.5 - 9	AIRAC 21 MAR 2024
ENR 3.2 - 64	23 JAN 2025	ENR 5.1 - 5	AIRAC 21 MAR 2024	ENR 5.5 - 10	AIRAC 21 MAR 2024
ENR 3.2 - 65	23 JAN 2025	ENR 5.1 - 6	AIRAC 21 MAR 2024	ENR 5.5 - 11	17 APR 2025
ENR 3.2 - 66	23 JAN 2025	ENR 5.1 - 7	AIRAC 21 MAR 2024	ENR 5.5 - 12	17 APR 2025
ENR 3.2 - 67	23 JAN 2025	ENR 5.1 - 8	AIRAC 21 MAR 2024	ENR 5.5 - 13	AIRAC 20 MAR 2025
ENR 3.2 - 68	23 JAN 2025	ENR 5.1 - 9	16 MAY 2024	ENR 5.5 - 14	AIRAC 20 MAR 2025
ENR 3.2 - 69	23 JAN 2025	ENR 5.1 - 10	16 MAY 2024	ENR 5.5 - 15	AIRAC 20 MAR 2025
ENR 3.2 - 70	23 JAN 2025	ENR 5.1 - 11	AIRAC 21 MAR 2024	ENR 5.5 - 16	AIRAC 20 MAR 2025
ENR 3.2 - 71	AIRAC 04 SEP 2025	ENR 5.1 - 12	AIRAC 21 MAR 2024	ENR 5.5 - 17	17 APR 2025
ENR 3.2 - 72	AIRAC 04 SEP 2025	ENR 5.1 - 13	AIRAC 21 MAR 2024	ENR 5.5 - 18	17 APR 2025
ENR 3.2 - 73	23 JAN 2025	ENR 5.1 - 14	AIRAC 21 MAR 2024	ENR 5.5 - 19	15 MAY 2025
ENR 3.2 - 74	23 JAN 2025	ENR 5.1 - 15	AIRAC 20 MAR 2025	ENR 5.5 - 20	15 MAY 2025
ENR 3.2 - 75	23 JAN 2025	ENR 5.1 - 16	AIRAC 20 MAR 2025	ENR 5.6 - 1	15 OCT 2015
ENR 3.2 - 76	23 JAN 2025	ENR 5.1 - 17	AIRAC 20 MAR 2025	ENR 5.6 - 2	15 OCT 2015
ENR 3.2 - 77	23 JAN 2025	ENR 5.1 - 18	AIRAC 20 MAR 2025	ENR 5.6 - 3	15 MAY 2025
ENR 3.2 - 78	23 JAN 2025	ENR 5.1 - 19	AIRAC 21 MAR 2024	ENR 5.6 - 4	15 MAY 2025
ENR 3.2 - 79	AIRAC 10 JUL 2025	ENR 5.1 - 20	AIRAC 21 MAR 2024	ENR 5.6 - 5	15 MAY 2025
ENR 3.2 - 80	AIRAC 10 JUL 2025	ENR 5.2 - 1	AIRAC 21 MAR 2024	ENR 5.6 - 6	15 MAY 2025
ENR 3.2 - 81	23 JAN 2025	ENR 5.2 - 2	AIRAC 21 MAR 2024	ENR 5.6 - 7	15 MAY 2025
ENR 3.2 - 82	23 JAN 2025	ENR 5.2 - 3	AIRAC 21 MAR 2024	ENR 5.6 - 8	15 MAY 2025
ENR 3.2 - 83	23 JAN 2025	ENR 5.2 - 4	AIRAC 21 MAR 2024	ENR 6 - 1	18 MAY 2023
ENR 3.2 - 84	23 JAN 2025	ENR 5.2 - 5	AIRAC 21 MAR 2024	ENR 6 - 2	18 MAY 2023
ENR 3.2 - 85	AIRAC 15 MAY 2025	ENR 5.2 - 6	AIRAC 21 MAR 2024	ENR 6.1 - 1	12 JUN 2025
ENR 3.2 - 86	AIRAC 15 MAY 2025	ENR 5.2 - 7	AIRAC 21 MAR 2024	ENR 6.1 - 2	12 JUN 2025
ENR 3.2 - 87	23 JAN 2025	ENR 5.2 - 8	AIRAC 21 MAR 2024	ENR 6.3 - 1	AIRAC 20 MAR 2025
ENR 3.2 - 88	23 JAN 2025	ENR 5.2 - 9	AIRAC 21 MAR 2024	ENR 6.3 - 2	AIRAC 20 MAR 2025
ENR 3.3 - 1	AIRAC 15 MAY 2025	ENR 5.2 - 10	AIRAC 21 MAR 2024	ENR 6.4 - 1	AIRAC 20 MAR 2025
ENR 3.3 - 2	AIRAC 15 MAY 2025	ENR 5.2 - 11	AIRAC 21 MAR 2024	ENR 6.4 - 2	AIRAC 20 MAR 2025
ENR 3.3 - 3	AIRAC 15 MAY 2025	ENR 5.2 - 12	AIRAC 21 MAR 2024	ENR 6.5 - 1	20 MAR 2025
ENR 3.3 - 4	AIRAC 15 MAY 2025	ENR 5.2 - 13	AIRAC 21 MAR 2024	ENR 6.5 - 2	20 MAR 2025
ENR 3.3 - 5	AIRAC 15 MAY 2025	ENR 5.2 - 14	AIRAC 21 MAR 2024	ENR 6.7 - 1	20 MAR 2025
ENR 3.3 - 6	AIRAC 15 MAY 2025	ENR 5.2 - 15	AIRAC 21 MAR 2024	ENR 6.7 - 2	20 MAR 2025
ENR 3.3 - 7	AIRAC 15 MAY 2025	ENR 5.2 - 16	AIRAC 21 MAR 2024		
ENR 3.3 - 8	AIRAC 15 MAY 2025	ENR 5.2 - 17	AIRAC 21 MAR 2024		
ENR 3.3 - 9	AIRAC 15 MAY 2025	ENR 5.2 - 18	AIRAC 21 MAR 2024		
ENR 3.3 - 10	AIRAC 15 MAY 2025	ENR 5.2 - 19	AIRAC 21 MAR 2024		
ENR 3.3 - 11	AIRAC 15 MAY 2025	ENR 5.2 - 20	AIRAC 21 MAR 2024		
ENR 3.3 - 12	AIRAC 15 MAY 2025	ENR 5.2 - 21	AIRAC 21 MAR 2024		
ENR 3.3 - 13	AIRAC 15 MAY 2025	ENR 5.2 - 22	AIRAC 21 MAR 2024		

**PART 3 - AERODROMES (AD)**

AD 0.1 - 1	26 JAN 2023
AD 0.1 - 2	26 JAN 2023
AD 0.2 - 1	26 JAN 2023

Page	Date	Page	Date	Page	Date
AD 0.2 - 2	26 JAN 2023	LSZB AD 2.24.7 - 1	AIRAC 20 FEB 2025	LSGC AD 2.24.9 - 2	23 JAN 2025
AD 0.3 - 1	26 JAN 2023	LSZB AD 2.24.7 - 2	AIRAC 20 FEB 2025	LSGC AD 2.24.9 - 3	23 JAN 2025
AD 0.3 - 2	26 JAN 2023	LSZB AD 2.24.7 - 3	AIRAC 20 FEB 2025	LSGC AD 2.24.9 - 4	23 JAN 2025
AD 0.4 - 1	26 JAN 2023	LSZB AD 2.24.7 - 4	AIRAC 20 FEB 2025	LSGC AD 2.24.10 - 1	20 MAR 2025
AD 0.4 - 2	26 JAN 2023	LSZB AD 2.24.9 - 1	AIRAC 20 FEB 2025	LSGC AD 2.24.10 - 2	20 MAR 2025
AD 0.5 - 1	26 JAN 2023	LSZB AD 2.24.9 - 2	AIRAC 20 FEB 2025	LSGC AD 2.24.10 - 3	23 JAN 2025
AD 0.5 - 2	26 JAN 2023	LSZB AD 2.24.10 - 1	AIRAC 20 FEB 2025	LSGC AD 2.24.10 - 4	23 JAN 2025
AD 0.6 - 1	04 SEP 2025	LSZB AD 2.24.10 - 2	AIRAC 20 FEB 2025	LSGG AD 2 - 1	20 FEB 2025
AD 0.6 - 2	04 SEP 2025	LSZB AD 2.24.10 - 3	AIRAC 20 FEB 2025	LSGG AD 2 - 2	20 FEB 2025
AD 0.6 - 3	04 SEP 2025	LSZB AD 2.24.10 - 4	AIRAC 20 FEB 2025	LSGG AD 2 - 3	07 AUG 2025
AD 0.6 - 4	04 SEP 2025	LSZB AD 2.24.10 - 5	AIRAC 20 FEB 2025	LSGG AD 2 - 4	07 AUG 2025
AD 0.6 - 5	04 SEP 2025	LSZB AD 2.24.10 - 6	AIRAC 20 FEB 2025	LSGG AD 2 - 5	07 AUG 2025
AD 0.6 - 6	04 SEP 2025	LSZB AD 2.24.10 - 7	10 JUL 2025	LSGG AD 2 - 6	07 AUG 2025
AD 0.6 - 7	04 SEP 2025	LSZB AD 2.24.10 - 8	10 JUL 2025	LSGG AD 2 - 7	07 AUG 2025
AD 0.6 - 8	04 SEP 2025	LSZB AD 2.24.10 - 9	10 JUL 2025	LSGG AD 2 - 8	07 AUG 2025
AD 0.6 - 9	04 SEP 2025	LSZB AD 2.24.10 - 10	10 JUL 2025	LSGG AD 2 - 9	07 AUG 2025
AD 0.6 - 10	04 SEP 2025	LSZB AD 2.24.10 - 11	AIRAC 20 FEB 2025	LSGG AD 2 - 10	07 AUG 2025
AD 0.6 - 11	04 SEP 2025	LSZB AD 2.24.10 - 12	AIRAC 20 FEB 2025	LSGG AD 2 - 11	07 AUG 2025
AD 0.6 - 12	04 SEP 2025	LSZB AD 2.24.13 - 1	AIRAC 20 FEB 2025	LSGG AD 2 - 12	07 AUG 2025
AD 0.6 - 13	04 SEP 2025	LSZB AD 2.24.13 - 2	AIRAC 20 FEB 2025	LSGG AD 2 - 13	07 AUG 2025
AD 0.6 - 14	04 SEP 2025	LSZB AD 2.24.13 - 3	20 FEB 2025	LSGG AD 2 - 14	07 AUG 2025
AD 1.1 - 1	19 MAY 2022	LSZB AD 2.24.13 - 4	20 FEB 2025	LSGG AD 2 - 15	07 AUG 2025
AD 1.1 - 2	19 MAY 2022	LSZC AD 2 - 1	20 MAR 2025	LSGG AD 2 - 16	07 AUG 2025
AD 1.1 - 3	28 NOV 2024	LSZC AD 2 - 2	20 MAR 2025	LSGG AD 2 - 17	07 AUG 2025
AD 1.1 - 4	28 NOV 2024	LSZC AD 2 - 3	20 MAR 2025	LSGG AD 2 - 18	07 AUG 2025
AD 1.1 - 5	15 MAY 2025	LSZC AD 2 - 4	20 MAR 2025	LSGG AD 2 - 19	07 AUG 2025
AD 1.1 - 6	15 MAY 2025	LSZC AD 2 - 5	15 MAY 2025	LSGG AD 2 - 20	07 AUG 2025
AD 1.2 - 1	28 DEC 2023	LSZC AD 2 - 6	15 MAY 2025	LSGG AD 2 - 21	07 AUG 2025
AD 1.2 - 2	28 DEC 2023	LSZC AD 2 - 7	15 MAY 2025	LSGG AD 2 - 22	07 AUG 2025
AD 1.2 - 3	19 MAY 2022	LSZC AD 2 - 8	15 MAY 2025	LSGG AD 2 - 23	07 AUG 2025
AD 1.2 - 4	19 MAY 2022	LSZC AD 2 - 9	17 APR 2025	LSGG AD 2 - 24	07 AUG 2025
AD 1.3 - 1	04 SEP 2025	LSZC AD 2 - 10	17 APR 2025	LSGG AD 2 - 25	07 AUG 2025
AD 1.3 - 2	04 SEP 2025	LSZC AD 2.24.1 - 1	15 MAY 2025	LSGG AD 2 - 26	07 AUG 2025
AD 1.3 - 3	04 SEP 2025	LSZC AD 2.24.1 - 2	15 MAY 2025	LSGG AD 2 - 27	07 AUG 2025
AD 1.3 - 4	04 SEP 2025	LSZC AD 2.24.4 - 1	20 MAR 2025	LSGG AD 2 - 28	07 AUG 2025
AD 1.3 - 5	04 SEP 2025	LSZC AD 2.24.4 - 2	20 MAR 2025	LSGG AD 2 - 29	07 AUG 2025
AD 1.3 - 6	04 SEP 2025	LSZC AD 2.24.7 - 1	26 DEC 2024	LSGG AD 2 - 30	07 AUG 2025
AD 1.4 - 1	19 MAY 2022	LSZC AD 2.24.7 - 2	26 DEC 2024	LSGG AD 2 - 31	07 AUG 2025
AD 1.4 - 2	19 MAY 2022	LSZC AD 2.24.9 - 1	26 DEC 2024	LSGG AD 2 - 32	07 AUG 2025
AD 1.5 - 1	19 MAY 2022	LSZC AD 2.24.9 - 2	26 DEC 2024	LSGG AD 2 - 33	07 AUG 2025
AD 1.5 - 2	19 MAY 2022	LSZC AD 2.24.10 - 1	AIRAC 20 MAR 2025	LSGG AD 2 - 34	07 AUG 2025
LSZB AD 2 - 1	12 JUN 2025	LSZC AD 2.24.10 - 2	AIRAC 20 MAR 2025	LSGG AD 2 - 35	07 AUG 2025
LSZB AD 2 - 2	12 JUN 2025	LSZC AD 2.24.10 - 3	02 OCT 2025	LSGG AD 2 - 36	07 AUG 2025
LSZB AD 2 - 3	04 SEP 2025	LSZC AD 2.24.10 - 4	02 OCT 2025	LSGG AD 2 - 37	07 AUG 2025
LSZB AD 2 - 4	04 SEP 2025	LSGC AD 2 - 1	12 JUN 2025	LSGG AD 2 - 38	07 AUG 2025
LSZB AD 2 - 5	17 APR 2025	LSGC AD 2 - 2	12 JUN 2025	LSGG AD 2 - 39	07 AUG 2025
LSZB AD 2 - 6	17 APR 2025	LSGC AD 2 - 3	18 APR 2024	LSGG AD 2 - 40	07 AUG 2025
LSZB AD 2 - 7	17 APR 2025	LSGC AD 2 - 4	18 APR 2024	LSGG AD 2 - 41	07 AUG 2025
LSZB AD 2 - 8	17 APR 2025	LSGC AD 2 - 5	20 MAR 2025	LSGG AD 2 - 42	07 AUG 2025
LSZB AD 2 - 9	AIRAC 08 AUG 2024	LSGC AD 2 - 6	20 MAR 2025	LSGG AD 2 - 43	07 AUG 2025
LSZB AD 2 - 10	AIRAC 08 AUG 2024	LSGC AD 2 - 7	AIRAC 31 OCT 2024	LSGG AD 2 - 44	07 AUG 2025
LSZB AD 2 - 11	AIRAC 08 AUG 2024	LSGC AD 2 - 8	AIRAC 31 OCT 2024	LSGG AD 2 - 45	07 AUG 2025
LSZB AD 2 - 12	AIRAC 08 AUG 2024	LSGC AD 2 - 9	AIRAC 31 OCT 2024	LSGG AD 2 - 46	07 AUG 2025
LSZB AD 2 - 13	09 SEP 2021	LSGC AD 2 - 10	AIRAC 31 OCT 2024	LSGG AD 2 - 47	07 AUG 2025
LSZB AD 2 - 14	09 SEP 2021	LSGC AD 2 - 11	AIRAC 31 OCT 2024	LSGG AD 2 - 48	07 AUG 2025
LSZB AD 2 - 15	AIRAC 31 OCT 2024	LSGC AD 2 - 12	AIRAC 31 OCT 2024	LSGG AD 2 - 49	07 AUG 2025
LSZB AD 2 - 16	AIRAC 31 OCT 2024	LSGC AD 2 - 13	28 DEC 2023	LSGG AD 2 - 50	07 AUG 2025
LSZB AD 2 - 17	AIRAC 31 OCT 2024	LSGC AD 2 - 14	28 DEC 2023	LSGG AD 2 - 51	07 AUG 2025
LSZB AD 2 - 18	AIRAC 31 OCT 2024	LSGC AD 2 - 15	17 APR 2025	LSGG AD 2 - 52	07 AUG 2025
LSZB AD 2 - 19	17 APR 2025	LSGC AD 2 - 16	17 APR 2025	LSGG AD 2.24.1 - 1	AIRAC 07 AUG 2025
LSZB AD 2 - 20	17 APR 2025	LSGC AD 2.24.1 - 1	23 JAN 2025	LSGG AD 2.24.1 - 2	AIRAC 07 AUG 2025
LSZB AD 2.24.1 - 1	17 APR 2025	LSGC AD 2.24.1 - 2	23 JAN 2025	LSGG AD 2.24.2 - 1	AIRAC 07 AUG 2025
LSZB AD 2.24.1 - 2	17 APR 2025	LSGC AD 2.24.2 - 1	23 JAN 2025	LSGG AD 2.24.2 - 2	AIRAC 07 AUG 2025
LSZB AD 2.24.2 - 1	AIRAC 20 FEB 2025	LSGC AD 2.24.2 - 2	23 JAN 2025	LSGG AD 2.24.3 - 1	20 FEB 2025
LSZB AD 2.24.2 - 2	AIRAC 20 FEB 2025	LSGC AD 2.24.4 - 1	23 JAN 2025	LSGG AD 2.24.3 - 2	20 FEB 2025
LSZB AD 2.24.4 - 1	17 APR 2025	LSGC AD 2.24.4 - 2	23 JAN 2025	LSGG AD 2.24.3 - 3	12 JUN 2025
LSZB AD 2.24.4 - 2	17 APR 2025	LSGC AD 2.24.7 - 1	23 JAN 2025	LSGG AD 2.24.3 - 4	12 JUN 2025
LSZB AD 2.24.4 - 3	AIRAC 20 FEB 2025	LSGC AD 2.24.7 - 2	23 JAN 2025	LSGG AD 2.24.4 - 1	20 FEB 2025
LSZB AD 2.24.4 - 4	AIRAC 20 FEB 2025	LSGC AD 2.24.7 - 3	23 JAN 2025	LSGG AD 2.24.4 - 2	20 FEB 2025
LSZB AD 2.24.6 - 1	AIRAC 20 FEB 2025	LSGC AD 2.24.7 - 4	23 JAN 2025	LSGG AD 2.24.4 - 3	20 FEB 2025
LSZB AD 2.24.6 - 2	AIRAC 20 FEB 2025	LSGC AD 2.24.9 - 1	23 JAN 2025	LSGG AD 2.24.4 - 4	20 FEB 2025

Page	Date	Page	Date	Page	Date
LSGG AD 2.24.5 - 1	20 FEB 2025	LSZG AD 2.24.7 - 8	AIRAC 12 JUN 2025	LSMP AD 2.24.7 - 1	23 JAN 2025
LSGG AD 2.24.5 - 2	20 FEB 2025	LSZG AD 2.24.10 - 1	AIRAC 12 JUN 2025	LSMP AD 2.24.7 - 2	23 JAN 2025
LSGG AD 2.24.6 - 1	20 FEB 2025	LSZG AD 2.24.10 - 2	AIRAC 12 JUN 2025	LSMP AD 2.24.9 - 1	23 JAN 2025
LSGG AD 2.24.6 - 2	20 FEB 2025	LSZA AD 2 - 1	12 JUN 2025	LSMP AD 2.24.9 - 2	23 JAN 2025
LSGG AD 2.24.6 - 3	20 FEB 2025	LSZA AD 2 - 2	12 JUN 2025	LSMP AD 2.24.10 - 1	23 JAN 2025
LSGG AD 2.24.6 - 4	20 FEB 2025	LSZA AD 2 - 3	28 NOV 2024	LSMP AD 2.24.10 - 2	23 JAN 2025
LSGG AD 2.24.7 - 1	20 FEB 2025	LSZA AD 2 - 4	28 NOV 2024	LSMP AD 2.24.10 - 3	23 JAN 2025
LSGG AD 2.24.7 - 2	20 FEB 2025	LSZA AD 2 - 5	20 MAR 2025	LSMP AD 2.24.10 - 4	23 JAN 2025
LSGG AD 2.24.7 - 3	20 FEB 2025	LSZA AD 2 - 6	20 MAR 2025	LSMP AD 2.24.10 - 5	23 JAN 2025
LSGG AD 2.24.7 - 4	20 FEB 2025	LSZA AD 2 - 7	20 MAR 2025	LSMP AD 2.24.10 - 6	23 JAN 2025
LSGG AD 2.24.7 - 5	20 FEB 2025	LSZA AD 2 - 8	20 MAR 2025	LSZR AD 2 - 1	07 AUG 2025
LSGG AD 2.24.7 - 6	20 FEB 2025	LSZA AD 2 - 9	15 MAY 2025	LSZR AD 2 - 2	07 AUG 2025
LSGG AD 2.24.7 - 7	20 FEB 2025	LSZA AD 2 - 10	15 MAY 2025	LSZR AD 2 - 3	07 AUG 2025
LSGG AD 2.24.7 - 8	20 FEB 2025	LSZA AD 2 - 11	15 MAY 2025	LSZR AD 2 - 4	07 AUG 2025
LSGG AD 2.24.9 - 1	20 FEB 2025	LSZA AD 2 - 12	15 MAY 2025	LSZR AD 2 - 5	28 NOV 2024
LSGG AD 2.24.9 - 2	20 FEB 2025	LSZA AD 2 - 13	AIRAC 08 AUG 2024	LSZR AD 2 - 6	28 NOV 2024
LSGG AD 2.24.9 - 3	20 FEB 2025	LSZA AD 2 - 14	AIRAC 08 AUG 2024	LSZR AD 2 - 7	20 MAR 2025
LSGG AD 2.24.9 - 4	20 FEB 2025	LSZA AD 2 - 15	12 JUN 2025	LSZR AD 2 - 8	20 MAR 2025
LSGG AD 2.24.9 - 5	20 FEB 2025	LSZA AD 2 - 16	12 JUN 2025	LSZR AD 2 - 9	AIRAC 08 AUG 2024
LSGG AD 2.24.9 - 6	20 FEB 2025	LSZA AD 2 - 17	12 JUN 2025	LSZR AD 2 - 10	AIRAC 08 AUG 2024
LSGG AD 2.24.9 - 7	20 FEB 2025	LSZA AD 2 - 18	12 JUN 2025	LSZR AD 2 - 11	20 MAY 2021
LSGG AD 2.24.9 - 8	20 FEB 2025	LSZA AD 2 - 19	12 JUN 2025	LSZR AD 2 - 12	20 MAY 2021
LSGG AD 2.24.9 - 9	20 FEB 2025	LSZA AD 2 - 20	12 JUN 2025	LSZR AD 2 - 13	20 MAY 2021
LSGG AD 2.24.9 - 10	20 FEB 2025	LSZA AD 2 - 21	17 APR 2025	LSZR AD 2 - 14	20 MAY 2021
LSGG AD 2.24.9 - 11	20 FEB 2025	LSZA AD 2 - 22	17 APR 2025	LSZR AD 2 - 15	20 MAY 2021
LSGG AD 2.24.9 - 12	20 FEB 2025	LSZA AD 2.24.1 - 1	23 JAN 2025	LSZR AD 2 - 16	20 MAY 2021
LSGG AD 2.24.10 - 1	20 FEB 2025	LSZA AD 2.24.1 - 2	23 JAN 2025	LSZR AD 2 - 17	AIRAC 05 OCT 2023
LSGG AD 2.24.10 - 2	20 FEB 2025	LSZA AD 2.24.2 - 1	07 AUG 2025	LSZR AD 2 - 18	AIRAC 05 OCT 2023
LSGG AD 2.24.10 - 3	20 FEB 2025	LSZA AD 2.24.2 - 2	07 AUG 2025	LSZR AD 2 - 19	17 APR 2025
LSGG AD 2.24.10 - 4	20 FEB 2025	LSZA AD 2.24.4 - 1	23 JAN 2025	LSZR AD 2 - 20	17 APR 2025
LSGG AD 2.24.10 - 5	20 FEB 2025	LSZA AD 2.24.4 - 2	23 JAN 2025	LSZR AD 2.24.1 - 1	07 AUG 2025
LSGG AD 2.24.10 - 6	20 FEB 2025	LSZA AD 2.24.4 - 3	23 JAN 2025	LSZR AD 2.24.1 - 2	07 AUG 2025
LSGG AD 2.24.10 - 7	20 FEB 2025	LSZA AD 2.24.4 - 4	23 JAN 2025	LSZR AD 2.24.4 - 1	26 DEC 2024
LSGG AD 2.24.10 - 8	20 FEB 2025	LSZA AD 2.24.7 - 1	23 JAN 2025	LSZR AD 2.24.4 - 2	26 DEC 2024
LSGG AD 2.24.13 - 1	20 FEB 2025	LSZA AD 2.24.7 - 2	23 JAN 2025	LSZR AD 2.24.7 - 1	26 DEC 2024
LSGG AD 2.24.13 - 2	20 FEB 2025	LSZA AD 2.24.7 - 3	23 JAN 2025	LSZR AD 2.24.7 - 2	26 DEC 2024
LSGG AD 2.24.13 - 3	20 FEB 2025	LSZA AD 2.24.7 - 4	23 JAN 2025	LSZR AD 2.24.7 - 3	26 DEC 2024
LSGG AD 2.24.13 - 4	20 FEB 2025	LSZA AD 2.24.7 - 5	23 JAN 2025	LSZR AD 2.24.7 - 4	26 DEC 2024
LSZG AD 2 - 1	AIRAC 12 JUN 2025	LSZA AD 2.24.7 - 6	23 JAN 2025	LSZR AD 2.24.7 - 5	23 JAN 2025
LSZG AD 2 - 2	AIRAC 12 JUN 2025	LSZA AD 2.24.9 - 1	23 JAN 2025	LSZR AD 2.24.7 - 6	23 JAN 2025
LSZG AD 2 - 3	AIRAC 12 JUN 2025	LSZA AD 2.24.9 - 2	23 JAN 2025	LSZR AD 2.24.7 - 7	26 DEC 2024
LSZG AD 2 - 4	AIRAC 12 JUN 2025	LSZA AD 2.24.10 - 1	23 JAN 2025	LSZR AD 2.24.7 - 8	26 DEC 2024
LSZG AD 2 - 5	20 MAR 2025	LSZA AD 2.24.10 - 2	23 JAN 2025	LSZR AD 2.24.7 - 9	26 DEC 2024
LSZG AD 2 - 6	20 MAR 2025	LSZA AD 2.24.10 - 3	23 JAN 2025	LSZR AD 2.24.7 - 10	26 DEC 2024
LSZG AD 2 - 7	12 JUN 2025	LSZA AD 2.24.10 - 4	23 JAN 2025	LSZR AD 2.24.7 - 11	26 DEC 2024
LSZG AD 2 - 8	12 JUN 2025	LSZA AD 2.24.10 - 5	04 SEP 2025	LSZR AD 2.24.7 - 12	26 DEC 2024
LSZG AD 2 - 9	AIRAC 12 JUN 2025	LSZA AD 2.24.10 - 6	04 SEP 2025	LSZR AD 2.24.9 - 1	26 DEC 2024
LSZG AD 2 - 10	AIRAC 12 JUN 2025	LSZA AD 2.24.10 - 7	04 SEP 2025	LSZR AD 2.24.9 - 2	26 DEC 2024
LSZG AD 2 - 11	AIRAC 12 JUN 2025	LSZA AD 2.24.10 - 8	04 SEP 2025	LSZR AD 2.24.9 - 3	26 DEC 2024
LSZG AD 2 - 12	AIRAC 12 JUN 2025	LSMP AD 2 - 1	26 DEC 2024	LSZR AD 2.24.9 - 4	26 DEC 2024
LSZG AD 2 - 13	AIRAC 12 JUN 2025	LSMP AD 2 - 2	26 DEC 2024	LSZR AD 2.24.9 - 5	26 DEC 2024
LSZG AD 2 - 14	AIRAC 12 JUN 2025	LSMP AD 2 - 3	02 OCT 2025	LSZR AD 2.24.9 - 6	26 DEC 2024
LSZG AD 2 - 15	17 APR 2025	LSMP AD 2 - 4	02 OCT 2025	LSZR AD 2.24.10 - 1	23 JAN 2025
LSZG AD 2 - 16	17 APR 2025	LSMP AD 2 - 5	14 JUL 2022	LSZR AD 2.24.10 - 2	23 JAN 2025
LSZG AD 2.24.1 - 1	17 APR 2025	LSMP AD 2 - 6	14 JUL 2022	LSZR AD 2.24.10 - 3	23 JAN 2025
LSZG AD 2.24.1 - 2	17 APR 2025	LSMP AD 2 - 7	02 OCT 2025	LSZR AD 2.24.10 - 4	23 JAN 2025
LSZG AD 2.24.1 - 3	17 APR 2025	LSMP AD 2 - 8	02 OCT 2025	LSZR AD 2.24.10 - 5	23 JAN 2025
LSZG AD 2.24.1 - 4	17 APR 2025	LSMP AD 2 - 9	02 OCT 2025	LSZR AD 2.24.10 - 6	23 JAN 2025
LSZG AD 2.24.2 - 1	17 APR 2025	LSMP AD 2 - 10	02 OCT 2025	LSZR AD 2.24.13 - 1	AIRAC 20 MAR 2025
LSZG AD 2.24.2 - 2	17 APR 2025	LSMP AD 2 - 11	AIRAC 31 OCT 2024	LSZR AD 2.24.13 - 2	AIRAC 20 MAR 2025
LSZG AD 2.24.2 - 3	17 APR 2025	LSMP AD 2 - 12	AIRAC 31 OCT 2024	LSZS AD 2 - 1	05 SEP 2024
LSZG AD 2.24.2 - 4	17 APR 2025	LSMP AD 2 - 13	AIRAC 31 OCT 2024	LSZS AD 2 - 2	05 SEP 2024
LSZG AD 2.24.4 - 1	AIRAC 12 JUN 2025	LSMP AD 2 - 14	AIRAC 31 OCT 2024	LSZS AD 2 - 3	28 NOV 2024
LSZG AD 2.24.4 - 2	AIRAC 12 JUN 2025	LSMP AD 2 - 15	02 OCT 2025	LSZS AD 2 - 4	28 NOV 2024
LSZG AD 2.24.7 - 1	AIRAC 12 JUN 2025	LSMP AD 2 - 16	02 OCT 2025	LSZS AD 2 - 5	20 MAR 2025
LSZG AD 2.24.7 - 2	AIRAC 12 JUN 2025	LSMP AD 2.24.1 - 1	02 OCT 2025	LSZS AD 2 - 6	20 MAR 2025
LSZG AD 2.24.7 - 3	AIRAC 12 JUN 2025	LSMP AD 2.24.1 - 2	02 OCT 2025	LSZS AD 2 - 7	05 SEP 2024
LSZG AD 2.24.7 - 4	AIRAC 12 JUN 2025	LSMP AD 2.24.4 - 1	23 JAN 2025	LSZS AD 2 - 8	05 SEP 2024
LSZG AD 2.24.7 - 5	AIRAC 12 JUN 2025	LSMP AD 2.24.4 - 2	23 JAN 2025	LSZS AD 2 - 9	AIRAC 23 JAN 2025
LSZG AD 2.24.7 - 6	AIRAC 12 JUN 2025	LSMP AD 2.24.4 - 3	23 JAN 2025	LSZS AD 2 - 10	AIRAC 23 JAN 2025
LSZG AD 2.24.7 - 7	AIRAC 12 JUN 2025	LSMP AD 2.24.4 - 4	23 JAN 2025	LSZS AD 2 - 11	28 DEC 2023



Page	Date	Page	Date	Page	Date
LSZH AD 2.24.7.5 - 7	AIRAC 12 JUN 2025				
LSZH AD 2.24.7.5 - 8	AIRAC 12 JUN 2025				
LSZH AD 2.24.7.5 - 9	AIRAC 12 JUN 2025				
LSZH AD 2.24.7.5 - 10	AIRAC 12 JUN 2025				
LSZH AD 2.24.7.6 - 1	AIRAC 20 MAR 2025				
LSZH AD 2.24.7.6 - 2	AIRAC 20 MAR 2025				
LSZH AD 2.24.9.1 - 1	AIRAC 20 MAR 2025				
LSZH AD 2.24.9.1 - 2	AIRAC 20 MAR 2025				
LSZH AD 2.24.9.2 - 1	AIRAC 20 MAR 2025				
LSZH AD 2.24.9.2 - 2	AIRAC 20 MAR 2025				
LSZH AD 2.24.9.3 - 1	AIRAC 20 MAR 2025				
LSZH AD 2.24.9.3 - 2	AIRAC 20 MAR 2025				
LSZH AD 2.24.10.1 - 1	AIRAC 20 MAR 2025				
LSZH AD 2.24.10.1 - 2	AIRAC 20 MAR 2025				
LSZH AD 2.24.10.1 - 3	AIRAC 20 MAR 2025				
LSZH AD 2.24.10.1 - 4	AIRAC 20 MAR 2025				
LSZH AD 2.24.10.1 - 5	AIRAC 20 MAR 2025				
LSZH AD 2.24.10.1 - 6	AIRAC 20 MAR 2025				
LSZH AD 2.24.10.1 - 7	AIRAC 20 MAR 2025				
LSZH AD 2.24.10.1 - 8	AIRAC 20 MAR 2025				
LSZH AD 2.24.10.1 - 9	AIRAC 20 MAR 2025				
LSZH AD 2.24.10.1 - 10	AIRAC 20 MAR 2025				
LSZH AD 2.24.10.2 - 1	AIRAC 20 MAR 2025				
LSZH AD 2.24.10.2 - 2	AIRAC 20 MAR 2025				
LSZH AD 2.24.10.2 - 3	AIRAC 20 MAR 2025				
LSZH AD 2.24.10.2 - 4	AIRAC 20 MAR 2025				
LSZH AD 2.24.10.2 - 5	AIRAC 20 MAR 2025				
LSZH AD 2.24.10.2 - 6	AIRAC 20 MAR 2025				
LSZH AD 2.24.10.3 - 1	AIRAC 20 MAR 2025				
LSZH AD 2.24.10.3 - 2	AIRAC 20 MAR 2025				
LSZH AD 2.24.10.3 - 3	AIRAC 20 MAR 2025				
LSZH AD 2.24.10.3 - 4	AIRAC 20 MAR 2025				
LSZH AD 2.24.10.3 - 5	AIRAC 20 MAR 2025				
LSZH AD 2.24.10.3 - 6	AIRAC 20 MAR 2025				
LSZH AD 2.24.10.3 - 7	AIRAC 20 MAR 2025				
LSZH AD 2.24.10.3 - 8	AIRAC 20 MAR 2025				
LSZH AD 2.24.10.4 - 1	AIRAC 20 MAR 2025				
LSZH AD 2.24.10.4 - 2	AIRAC 20 MAR 2025				
LSZH AD 2.24.10.4 - 3	AIRAC 20 MAR 2025				
LSZH AD 2.24.10.4 - 4	AIRAC 20 MAR 2025				
LSZH AD 2.24.10.4 - 5	AIRAC 20 MAR 2025				
LSZH AD 2.24.10.4 - 6	AIRAC 20 MAR 2025				
LSZH AD 2.24.10.4 - 7	AIRAC 20 MAR 2025				
LSZH AD 2.24.10.4 - 8	AIRAC 20 MAR 2025				
LSZH AD 2.24.13 - 1	AIRAC 20 MAR 2025				
LSZH AD 2.24.13 - 2	AIRAC 20 MAR 2025				

THIS PAGE INTENTIONALLY LEFT BLANK

**GEN 2.7 SUNRISE/SUNSET****General****Day and night limits**

The stated times are expressed in LT and are applicable throughout the FIR Switzerland. The reference point for the time calculation is Berne observatory; 46°57' N / 007°26' E.

Morning civil twilight begins and evening civil twilight ends when the centre of the sun is 6° below the astronomical horizon.

Night, and night FLTs, respectively, apply to the period between the end of evening civil twilight and the beginning of morning civil twilight.

Summer time (ETE; UTC+2) **comes into force on the last SUN of MAR.**

Summer time **ends on the last SUN of OCT.**

The time indications in the columns signify:

Col 1: BCMT - time for the beginning of morning civil twilight (HRH\*)

Col 2: time for sunrise (SR)

Col 3: time for sunset (SS)

Col 4: ECET - time for the end of evening civil twilight (HRH\*)

in Central European time (CET; UTC+1)

■ The tables are calculated for 2025 / 2026.

2025	FIR SWITZERLAND (LT)											
Day	OCT				NOV				DEC			
	1	2	3	4	1	2	3	4	1	2	3	4
1	0659	0729	1910	1940	0641	0713	1714	1746	0721	0755	1643	1718
2	0700	0731	1908	1938	0643	0714	1713	1744	0722	0756	1643	1718
3	0702	0732	1906	1936	0644	0716	1711	1743	0723	0758	1642	1717
4	0703	0733	1904	1934	0645	0717	1710	1742	0724	0759	1642	1717
5	0704	0735	1902	1932	0647	0719	1708	1740	0725	0800	1642	1717
6	0706	0736	1900	1930	0648	0720	1707	1739	0726	0801	1642	1717
7	0707	0737	1858	1928	0650	0722	1705	1738	0727	0802	1641	1716
8	0708	0739	1856	1926	0651	0723	1704	1737	0728	0803	1641	1716
9	0710	0740	1854	1925	0652	0725	1703	1735	0729	0804	1641	1716
10	0711	0741	1852	1923	0654	0726	1702	1734	0730	0805	1641	1716
11	0712	0743	1850	1921	0655	0728	1700	1733	0731	0806	1641	1716
12	0714	0744	1848	1919	0656	0729	1659	1732	0731	0807	1641	1717
13	0715	0746	1847	1917	0658	0731	1658	1731	0732	0808	1641	1717
14	0716	0747	1845	1915	0659	0732	1657	1730	0733	0808	1641	1717
15	0718	0748	1843	1913	0700	0734	1656	1729	0734	0809	1642	1717
16	0719	0750	1841	1912	0702	0735	1655	1728	0734	0810	1642	1717
17	0720	0751	1839	1910	0703	0736	1654	1727	0735	0811	1642	1718
18	0722	0753	1837	1908	0704	0738	1653	1726	0736	0811	1643	1718
19	0723	0754	1836	1906	0706	0739	1652	1725	0736	0812	1643	1718
20	0725	0755	1834	1905	0707	0741	1651	1724	0737	0812	1643	1719
21	0726	0757	1832	1903	0708	0742	1650	1723	0737	0813	1644	1719
22	0727	0758	1830	1901	0710	0744	1649	1723	0738	0813	1644	1720
23	0729	0800	1829	1900	0711	0745	1648	1722	0738	0814	1645	1720
24	0730	0801	1827	1858	0712	0746	1647	1721	0739	0814	1646	1721
25	0731	0803	1825	1856	0713	0748	1647	1721	0739	0815	1646	1722
26	0633	0704	1724	1755	0715	0749	1646	1720	0740	0815	1647	1722
27	0634	0706	1722	1753	0716	0750	1645	1720	0740	0815	1648	1723
28	0636	0707	1720	1752	0717	0751	1645	1719	0740	0815	1648	1724
29	0637	0709	1719	1750	0718	0753	1644	1719	0740	0816	1649	1725
30	0638	0710	1717	1749	0719	0754	1644	1718	0740	0816	1650	1725
31	0640	0712	1716	1747					0741	0816	1651	1726

2026	FIR SWITZERLAND (LT)												
	Day	JAN				FEB				MAR			
		1	2	3	4	1	2	3	4	1	2	3	4
1	0741	0816	1652	1727	0723	0755	1733	1806	0640	0710	1816	1846	
2	0741	0816	1653	1728	0721	0754	1735	1807	0638	0708	1817	1848	
3	0741	0816	1654	1729	0720	0753	1736	1808	0636	0707	1818	1849	
4	0741	0816	1655	1730	0719	0751	1738	1810	0634	0705	1820	1850	
5	0741	0816	1656	1731	0718	0750	1739	1811	0632	0703	1821	1852	
6	0740	0815	1657	1732	0716	0749	1741	1813	0631	0701	1823	1853	
7	0740	0815	1658	1733	0715	0747	1742	1814	0629	0659	1824	1855	
8	0740	0815	1659	1734	0714	0746	1744	1816	0627	0657	1826	1856	
9	0740	0814	1701	1735	0712	0744	1745	1817	0625	0655	1827	1857	
10	0739	0814	1702	1736	0711	0743	1747	1819	0623	0653	1829	1859	
11	0739	0814	1703	1738	0709	0741	1748	1820	0621	0651	1830	1900	
12	0739	0813	1704	1739	0708	0740	1750	1821	0619	0649	1831	1902	
13	0738	0813	1705	1740	0707	0738	1751	1823	0617	0647	1833	1903	
14	0738	0812	1707	1741	0705	0736	1753	1824	0615	0645	1834	1905	
15	0737	0811	1708	1742	0704	0735	1754	1826	0613	0643	1836	1906	
16	0737	0811	1710	1744	0702	0733	1756	1827	0611	0641	1837	1907	
17	0736	0810	1711	1745	0700	0732	1758	1829	0609	0639	1838	1909	
18	0735	0809	1712	1746	0659	0730	1759	1830	0607	0637	1840	1910	
19	0735	0809	1714	1748	0657	0728	1801	1832	0605	0635	1841	1912	
20	0734	0808	1715	1749	0655	0726	1802	1833	0603	0634	1843	1913	
21	0733	0807	1717	1750	0654	0725	1804	1835	0601	0632	1844	1915	
22	0733	0806	1718	1752	0652	0723	1805	1836	0559	0630	1846	1916	
23	0732	0805	1719	1753	0650	0721	1807	1837	0557	0628	1847	1917	
24	0731	0804	1721	1754	0649	0719	1808	1839	0555	0626	1848	1919	
25	0730	0803	1722	1756	0647	0718	1810	1840	0553	0624	1850	1920	
26	0729	0802	1724	1757	0645	0716	1811	1842	0551	0622	1851	1922	
27	0728	0801	1725	1758	0643	0714	1813	1843	0549	0620	1852	1923	
28	0727	0800	1727	1800	0642	0712	1814	1845	0547	0618	1854	1924	
29	0726	0759	1728	1801					0645	0716	1955	2026	
30	0725	0758	1730	1803					0643	0714	1957	2027	
31	0724	0756	1731	1804					0641	0712	1958	2029	

2026	FIR SWITZERLAND (LT)											
Day	APR				MAY				JUN			
	1	2	3	4	1	2	3	4	1	2	3	4
1	0639	0710	1959	2030	0541	0615	2040	2114	0501	0539	2117	2156
2	0637	0708	2001	2032	0540	0613	2042	2116	0500	0539	2118	2157
3	0635	0706	2002	2033	0538	0612	2043	2117	0500	0538	2119	2158
4	0633	0704	2004	2035	0536	0610	2045	2119	0459	0538	2120	2159
5	0631	0702	2005	2036	0535	0609	2046	2120	0458	0537	2121	2200
6	0629	0700	2006	2037	0533	0607	2047	2122	0458	0537	2121	2201
7	0627	0658	2008	2039	0531	0606	2048	2123	0457	0536	2122	2201
8	0625	0656	2009	2040	0530	0605	2050	2125	0457	0536	2123	2202
9	0623	0654	2010	2042	0528	0603	2051	2126	0456	0536	2124	2203
10	0621	0652	2012	2043	0527	0602	2052	2128	0456	0535	2124	2204
11	0619	0650	2013	2045	0525	0600	2054	2129	0456	0535	2125	2204
12	0617	0648	2014	2046	0524	0559	2055	2131	0456	0535	2125	2205
13	0615	0647	2016	2048	0522	0558	2056	2132	0455	0535	2126	2206
14	0613	0645	2017	2049	0521	0556	2057	2133	0455	0535	2126	2206
15	0611	0643	2019	2051	0519	0555	2059	2135	0455	0535	2127	2207
16	0609	0641	2020	2052	0518	0554	2100	2136	0455	0535	2127	2207
17	0607	0639	2021	2054	0517	0553	2101	2138	0455	0535	2128	2207
18	0605	0637	2023	2055	0515	0552	2102	2139	0455	0535	2128	2208
19	0603	0635	2024	2057	0514	0551	2104	2140	0455	0535	2128	2208
20	0601	0634	2025	2058	0513	0550	2105	2142	0455	0535	2129	2208
21	0559	0632	2027	2100	0512	0549	2106	2143	0455	0535	2129	2209
22	0558	0630	2028	2101	0510	0547	2107	2144	0456	0536	2129	2209
23	0556	0628	2030	2103	0509	0547	2108	2146	0456	0536	2129	2209
24	0554	0627	2031	2104	0508	0546	2109	2147	0456	0536	2129	2209
25	0552	0625	2032	2105	0507	0545	2110	2148	0457	0536	2129	2209
26	0550	0623	2034	2107	0506	0544	2111	2149	0457	0537	2129	2209
27	0548	0622	2035	2108	0505	0543	2112	2150	0458	0537	2129	2209
28	0547	0620	2036	2110	0504	0542	2113	2152	0458	0538	2129	2209
29	0545	0618	2038	2111	0503	0541	2114	2153	0459	0538	2129	2209
30	0543	0617	2039	2113	0503	0541	2115	2154	0459	0539	2129	2208
31					0502	0540	2116	2155				

2026	FIR SWITZERLAND (LT)												
	Day	JUL				AUG				SEP			
		1	2	3	4	1	2	3	4	1	2	3	4
1	0500	0539	2129	2208	0534	0610	2103	2138	0618	0650	2010	2042	
2	0501	0540	2128	2208	0536	0611	2101	2137	0619	0651	2008	2039	
3	0501	0541	2128	2207	0537	0612	2100	2135	0621	0652	2006	2037	
4	0502	0541	2128	2207	0538	0613	2059	2133	0622	0653	2004	2035	
5	0503	0542	2127	2207	0540	0615	2057	2132	0623	0655	2002	2033	
6	0504	0543	2127	2206	0541	0616	2056	2130	0625	0656	2000	2031	
7	0504	0543	2127	2205	0543	0617	2054	2129	0626	0657	1958	2029	
8	0505	0544	2126	2205	0544	0618	2053	2127	0628	0659	1956	2027	
9	0506	0545	2126	2204	0545	0620	2051	2125	0629	0700	1954	2025	
10	0507	0546	2125	2204	0547	0621	2049	2123	0630	0701	1952	2023	
11	0508	0547	2124	2203	0548	0622	2048	2122	0632	0703	1950	2021	
12	0509	0548	2124	2202	0550	0624	2046	2120	0633	0704	1948	2019	
13	0510	0549	2123	2201	0551	0625	2045	2118	0634	0705	1946	2017	
14	0511	0550	2122	2200	0553	0626	2043	2116	0636	0706	1944	2015	
15	0512	0550	2121	2159	0554	0627	2041	2114	0637	0708	1942	2013	
16	0514	0551	2121	2158	0555	0629	2039	2113	0638	0709	1940	2011	
17	0515	0552	2120	2157	0557	0630	2038	2111	0640	0710	1938	2009	
18	0516	0554	2119	2156	0558	0631	2036	2109	0641	0712	1936	2007	
19	0517	0555	2118	2155	0600	0633	2034	2107	0642	0713	1934	2005	
20	0518	0556	2117	2154	0601	0634	2033	2105	0644	0714	1932	2003	
21	0520	0557	2116	2153	0603	0635	2031	2103	0645	0716	1930	2001	
22	0521	0558	2115	2152	0604	0637	2029	2101	0647	0717	1928	1959	
23	0522	0559	2114	2151	0605	0638	2027	2059	0648	0718	1926	1957	
24	0523	0600	2113	2149	0607	0639	2025	2057	0649	0720	1924	1954	
25	0525	0601	2112	2148	0608	0640	2023	2055	0650	0721	1922	1952	
26	0526	0602	2110	2147	0610	0642	2022	2053	0652	0722	1920	1950	
27	0527	0604	2109	2145	0611	0643	2020	2052	0653	0723	1918	1948	
28	0529	0605	2108	2144	0612	0644	2018	2050	0654	0725	1916	1946	
29	0530	0606	2107	2143	0614	0646	2016	2048	0656	0726	1914	1944	
30	0531	0607	2105	2141	0615	0647	2014	2046	0657	0727	1912	1942	
31	0533	0608	2104	2140	0617	0648	2012	2044					

2026	FIR SWITZERLAND (LT)											
Day	OCT				NOV				DEC			
	1	2	3	4	1	2	3	4	1	2	3	4
1	0658	0729	1910	1940	0641	0713	1714	1746	0720	0755	1643	1718
2	0700	0730	1908	1938	0642	0714	1713	1745	0721	0756	1643	1718
3	0701	0732	1906	1937	0644	0716	1711	1743	0722	0757	1643	1717
4	0703	0733	1904	1935	0645	0717	1710	1742	0724	0758	1642	1717
5	0704	0734	1902	1933	0646	0719	1709	1741	0725	0800	1642	1717
6	0705	0736	1900	1931	0648	0720	1707	1739	0726	0801	1642	1717
7	0707	0737	1858	1929	0649	0721	1706	1738	0727	0802	1641	1717
8	0708	0738	1856	1927	0651	0723	1704	1737	0728	0803	1641	1716
9	0709	0740	1855	1925	0652	0724	1703	1736	0729	0804	1641	1716
10	0711	0741	1853	1923	0653	0726	1702	1734	0729	0805	1641	1716
11	0712	0742	1851	1921	0655	0727	1701	1733	0730	0806	1641	1716
12	0713	0744	1849	1919	0656	0729	1659	1732	0731	0806	1641	1717
13	0715	0745	1847	1918	0657	0730	1658	1731	0732	0807	1641	1717
14	0716	0747	1845	1916	0659	0732	1657	1730	0733	0808	1641	1717
15	0717	0748	1843	1914	0700	0733	1656	1729	0734	0809	1642	1717
16	0719	0749	1841	1912	0702	0735	1655	1728	0734	0810	1642	1717
17	0720	0751	1840	1910	0703	0736	1654	1727	0735	0810	1642	1718
18	0721	0752	1838	1909	0704	0738	1653	1726	0736	0811	1643	1718
19	0723	0754	1836	1907	0705	0739	1652	1725	0736	0812	1643	1718
20	0724	0755	1834	1905	0707	0740	1651	1724	0737	0812	1643	1719
21	0726	0757	1832	1903	0708	0742	1650	1724	0737	0813	1644	1719
22	0727	0758	1831	1902	0709	0743	1649	1723	0738	0813	1644	1720
23	0728	0759	1829	1900	0711	0745	1648	1722	0738	0814	1645	1720
24	0730	0801	1827	1858	0712	0746	1648	1722	0739	0814	1645	1721
25	0631	0702	1726	1757	0713	0747	1647	1721	0739	0815	1646	1721
26	0633	0704	1724	1755	0714	0749	1646	1720	0739	0815	1647	1722
27	0634	0705	1722	1754	0716	0750	1645	1720	0740	0815	1647	1723
28	0635	0707	1721	1752	0717	0751	1645	1719	0740	0815	1648	1724
29	0637	0708	1719	1751	0718	0752	1644	1719	0740	0816	1649	1724
30	0638	0710	1718	1749	0719	0754	1644	1718	0740	0816	1650	1725
31	0639	0711	1716	1748					0741	0816	1651	1726

**3.7 Skybriefing Products**  
<http://www.skybriefing.com>

Designation and reference		Type	Code	Rate CHF incl. VAT
<b>1 Yearly subscription</b>				
1.1	electronic AIP on skybriefing	IFR	eaip	92.50
1.2	electronic VFR Manual on skybriefing	VFR	evfr	53.30
1.3	VFR Manual - electronic GEN / AGA / COM / RAC / MAP / COR	VFR		free of charge
<b>2 Charts</b>				
	REF <a href="#">GEN-3.2</a> , REF VFR Manual, VFR MAP 2, § 1			

**4. AIRAC system**

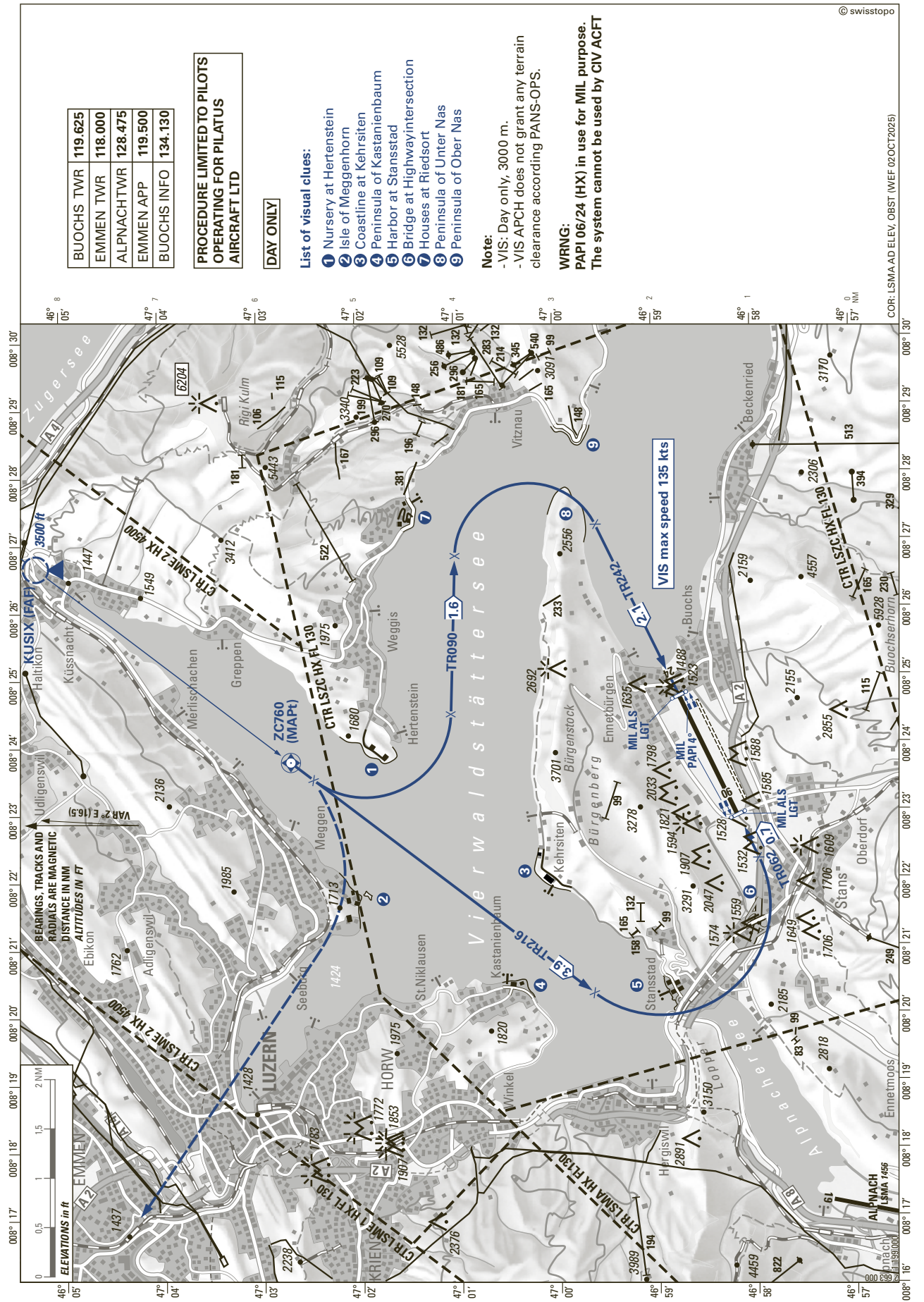
**4.1 AIRAC predetermined dates**

In order to control and regulate the operationally significant changes requiring amendments to charts, route manuals etc., such changes, whenever possible, will be issued on predetermined dates according to the AIRAC System. This type of information will be published as an AIRAC AIP AMDT or an AIRAC AIP SUP. If an AIRAC AMDT or SUP cannot be produced due to lack of time, NOTAM clearly marked AIRAC will be issued. Such NOTAM will immediately be followed by an AMDT or SUP. The table below indicates AIRAC effective dates for the coming years.

(Ensuing dates listed in AIS Manual, ICAO Doc 8126, Chapter 2.6.4, Table 2-1). Where no information has been submitted to AIS for publication on the selected date, a NIL notification will be originated.

<b>Schedule of AIRAC effective dates 2025</b>		<b>Schedule of AIRAC effective dates 2026</b>	
<b>Publication dates</b>	<b>Effective dates</b>	<b>Publication dates</b>	<b>Effective dates</b>
12 DEC 2024	<b>23 JAN 2025</b>	11 DEC 2025	<b>22 JAN 2026</b>
09 JAN 2025	<b>20 FEB 2025</b>	08 JAN 2026	<b>19 FEB 2026</b>
06 FEB 2025	<b>20 MAR 2025</b>	05 FEB 2026	<b>19 MAR 2026</b>
06 MAR 2025	<b>17 APR 2025</b>	05 MAR 2026	<b>16 APR 2026</b>
03 APR 2025	<b>15 MAY 2025</b>	02 APR 2026	<b>14 MAY 2026</b>
01 MAY 2025	<b>12 JUN 2025</b>	30 APR 2026	<b>11 JUN 2026</b>
29 MAY 2025	<b>10 JUL 2025</b>	28 MAY 2026	<b>09 JUL 2026</b>
26 JUN 2025	<b>07 AUG 2025</b>	25 JUN 2026	<b>06 AUG 2026</b>
24 JUL 2025	<b>04 SEP 2025</b>	23 JUL 2026	<b>03 SEP 2026</b>
21 AUG 2025	<b>02 OCT 2025</b>	20 AUG 2026	<b>01 OCT 2026</b>
18 SEP 2025	<b>30 OCT 2025</b>	17 SEP 2026	<b>29 OCT 2026</b>
16 OCT 2025	<b>27 NOV 2025</b>	15 OCT 2026	<b>26 NOV 2026</b>
13 NOV 2025	<b>25 DEC 2025</b>	12 NOV 2026	<b>24 DEC 2026</b>

<b>Schedule of AIRAC effective dates 2027</b>		<b>Schedule of AIRAC effective dates 2028</b>	
<b>Publication dates</b>	<b>Effective dates</b>	<b>Publication dates</b>	<b>Effective dates</b>
10 DEC 2026	<b>21 JAN 2027</b>	09 DEC 2027	<b>20 JAN 2028</b>
07 JAN 2027	<b>18 FEB 2027</b>	06 JAN 2028	<b>17 FEB 2028</b>
04 FEB 2027	<b>18 MAR 2027</b>	03 FEB 2028	<b>16 MAR 2028</b>
04 MAR 2027	<b>15 APR 2027</b>	02 MAR 2028	<b>13 APR 2028</b>
01 APR 2027	<b>13 MAY 2027</b>	30 MAR 2028	<b>11 MAY 2028</b>
29 APR 2027	<b>10 JUN 2027</b>	27 APR 2028	<b>08 JUN 2028</b>
27 MAY 2027	<b>08 JUL 2027</b>	25 MAY 2028	<b>06 JUL 2028</b>
24 JUN 2027	<b>05 AUG 2027</b>	22 JUN 2028	<b>03 AUG 2028</b>
22 JUL 2027	<b>02 SEP 2027</b>	20 JUL 2028	<b>31 AUG 2028</b>
19 AUG 2027	<b>30 SEP 2027</b>	17 AUG 2028	<b>28 SEP 2028</b>
16 SEP 2027	<b>28 OCT 2027</b>	14 SEP 2028	<b>26 OCT 2028</b>
14 OCT 2027	<b>25 NOV 2027</b>	12 OCT 2028	<b>23 NOV 2028</b>
11 NOV 2027	<b>23 DEC 2027</b>	09 NOV 2028	<b>21 DEC 2028</b>



BUOCHS TWR	119.625
EMMEN TWR	118.000
ALPNACHTWR	128.475
EMMEN APP	119.500
BUOCHS INFO	134.130

**PROCEDURE LIMITED TO PILOTS OPERATING FOR PILATUS AIRCRAFT LTD**

**DAY ONLY**

**List of visual clues:**

- 1 Nursery at Hertenstein
- 2 Isle of Meggenhorn
- 3 Coastline at Kehrsiten
- 4 Peninsula of Kastanienbaum
- 5 Harbor at Stansstad
- 6 Bridge at Highway intersection
- 7 Houses at Riedsort
- 8 Peninsula of Unter Nas
- 9 Peninsula of Ober Nas

**Note:**

- VIS: Day only, 3000 m.
- VIS APCH does not grant any terrain clearance according PANS-OPS.

**WRNG:**

**PAPI 06/24 (HX) in use for MIL purpose. The system cannot be used by CIV ACFT**

BEARINGS, TRACKS AND RADIALS ARE MAGNETIC DISTANCE IN NM ALTITUDES IN FT

ELEVATIONS in ft

THIS PAGE INTENTIONALLY LEFT BLANK

**LSMP AD 2.6 RESCUE AND FIRE FIGHTING SERVICES**

1	AD category for fire fighting	Category 5 during MIL AD OPR HR. Higher category up to 9 available O/R 48 HR before ETA/ETD.
2	Rescue equipment	One Ambulance
3	Capability for removal of disabled aircraft	During MIL AD OPR HR: Crane, tow-mat, lifting bags
4	Remarks	NIL

**LSMP AD 2.7 SEASONAL AVAILABILITY - CLEARING**

1	Type(s) of clearing equipment	Snow removal available
2	Clearance priorities	RWY, TWY, MIL apron, CIV apron
3	Remarks	Clearing done by MIL

**LSMP AD 2.8 APRONS, TAXIWAYS AND CHECK LOCATIONS/POSITIONS DATA**

1	Designation, surface and strength of Aprons	ASPH: PCR 400/F/C/X/U
2	Designation, width, surface and strength of Taxiways	ASPH: PCR 400/F/C/X/U Details: Ref to LSMP AD 2.24.1 - 1
3	ACL location and elevation	NIL
4	Location of VOR checkpoints	NIL
5	Location of INS checkpoints	NIL
6	Remarks	Parking: CIV apron

**LSMP AD 2.9 SURFACE MOVEMENT GUIDANCE, CONTROL SYSTEM AND MARKINGS**

1	Use of aircraft stand ID signs, TWY guide lines and visual docking/parking guidance system of aircraft stands	PRKG PSN 1 to 5: ACFT stand identification markings as well as lead-in, stop and lead-out lines.
2	RWY/TWY markings and LGT	RWY markings: DTHR, designation, aiming point, TDZ and centre line. TWY markings: Centre line and intermediate holding positions. Markings at all intersections with RWY: RWY holding position, mandatory instruction and enhanced TWY centre line. RWY LGT: See <a href="#">LSMP AD 2.14</a> TWY LGT: See <a href="#">LSMP AD 2.15</a>
3	Stop bars and RWY guard lights	Stop bars: NIL RGL: NIL
4	Other RWY protection measures	NIL
5	Remarks	RWY holding positions at TWY E, F and G are located 60 m from RWY 05/23 centre line and RWY holding position at TWY N is located 70 m from RWY 05/23 centre line (ICAO 75 m). Special operational procedures are in force to ensure RWY strip clearance. Mandatory instruction signs at all RWY holding positions. Information signs on the movement area.

LSMP AD 2.10 AERODROME OBSTACLES

In approach/TKOF areas				In circling area and at aerodrome		
1				2		
RWY/Area affected	Obstacle type Elevation Markings/LGT	Co-ordinates	Obstacle type Elevation Markings/LGT	Co-ordinates	RMK	
a	b	c	a	b	c	
		<i>ft</i>		<i>ft</i>		
AOC 05 (1)	Embankment	1471 46 51 08 N 006 55 41 E				
AOC 05 (2)	Pole	1475 46 51 09 N 006 55 54 E	Crane/Cranes marked/LGTD	1575 46 51 03 N 006 55 21 E	B0843/21	
AOC 05 (3)	Pole	1478 46 51 09 N 006 55 54 E	Crane/Cranes marked/LGTD	1551 46 50 34 N 006 55 13 E	B1231/21	
AOC 05 (4)	Pole	1483 46 51 14 N 006 55 53 E	Crane/Cranes marked/LGTD	1706 46 51 37 N 006 54 56 E	B1384/21	
AOC 05 (5)	Tree/Trees	1523 46 51 16 N 006 56 09 E				
AOC 23 (1)	Enclosure	1473 46 50 06 N 006 53 59 E				
AOC 23 (2)	Enclosure	1474 46 50 06 N 006 53 58 E				
AOC 23 (3)	Enclosure	1474 46 50 01 N 006 54 04 E				
AOC 23 (4)	Enclosure	1475 46 50 05 N 006 53 57 E				
AOC 23 (5)	Enclosure	1476 46 50 04 N 006 53 56 E				
AOC 23 (6)	Pole	1476 46 50 02 N 006 53 58 E				
AOC 23 (7)	Pole	1478 46 50 01 N 006 53 56 E				
AOC 23 (8)	Pole	1482 46 49 59 N 006 53 56 E				
AOC 23 (9)	Pole	1484 46 49 59 N 006 53 56 E				
AOC 23 (10)	Pole	1500 46 49 55 N 006 53 38 E				
AOC 23 (11)	Tree/Trees	1506 46 49 54 N 006 53 37 E				
AOC 23 (12)	Tree/Trees	1509 46 49 53 N 006 53 37 E				
AOC 23 (13)	Pole	1512 46 49 53 N 006 53 35 E				
AOC 23 (14)	Tree/Trees	1517 46 49 52 N 006 53 35 E				
AOC 23 (15)	Tree/Trees	1528 46 49 50 N 006 53 36 E				
AOC 23 (16)	Tree/Trees	1535 46 49 50 N 006 53 34 E				
AOC 23 (17)	Tree/Trees	1542 46 49 48 N 006 53 32 E				
AOC 23 (18)	Tree/Trees	1549 46 49 47 N 006 53 26 E				
AOC 23 (19)	Power line	1577 46 49 32 N 006 53 15 E				

## LSMP AD 2.12 RUNWAY PHYSICAL CHARACTERISTICS

Designations RWY NR	TRUE & MAG BRG	Dimensions of RWY (m)	Strength (PCR) and surface of RWY and SWY	THR COORD	THR elevation and highest elevation of TDZ of precision APP RWY	Slope of RWY-SWY
1	2	3	4	5	6	7
05	049/046	2791 x 40	PCR 400/F/C/X/U ASPH	46 50 07.73 N 006 54 07.73 E	1464 ft	-0.09%
23	229/226			46 51 03.10 N 006 55 39.02 E	1455 ft	+0.09%

Designations RWY NR	SWY dimensions (m)	CWY dimensions (m)	Strip dimensions (m)	OFZ	Remarks
1	8	9	10	11	12
05	NIL	60	2911 x 150	NIL	RWY 05 and 23 suitable for EFVS 200 operations. RWY strip and RESA dimensions according to non-instrument RWY criteria. CTN: MIL net barrier at end of RWY strip. RESA available after MIL net barrier. CWY only accountable if MIL net barrier lowered.
23	NIL	60			

## LSMP AD 2.13 DECLARED DISTANCES

RWY Designator	TORA (M)	TODA (M)	ASDA (M)	LDA (M)	Remarks
1	2	3	4	5	6
05	2433	2433	2433	2708	Max lengths with MIL net barrier raised
	2665	2725	2665	2708	Max lengths with MIL net barrier lowered
	2297	2297	2297	N/A	From turn pad intersection TWY S with MIL net barrier raised.
23	2364	2364	2364	2665	Max lengths with MIL net barrier raised
	2708	2768	2708	2665	Max lengths with MIL net barrier lowered
	2087	2087	2087	N/A	Intersection T/O KILO with net barrier raised

**LSMP AD 2.14 APPROACH AND RUNWAY LIGHTING**

RWY Designator	ALS type, LEN, INTST	THR LGT colour, INTST, WBAR	VASIS type, PSN, MEHT	RTZL LEN, colour, INTST	RCLL LEN, spacing, colour, INTST	REDL LEN, spacing, colour, INTST	RENL colour, INTST	SWY LGT LEN, colour, INTST	RMK
1	2	3	4	5	6	7	8	9	10
05	Calvert CAT I, 770 m, LIH, no LED	RTHL, G, LIH, WBAR, no LED; RTIL FLG W no LED	PAPI 4,7°, L, no LED (MIL use)	NIL	NIL	120 m, 60 m, R, LIH; 1986 m, 60 m, W, LIH; 685 m, 60 m, Y, LIH. All no LED	R, LIH, no LED	NIL	CIV RWY end 99 m before RENL
23	Calvert CAT I, 900 m, LIH, no LED		PAPI 3,7°, L, no LED (MIL use)	NIL	NIL	190 m, 60 m, R, LIH; 1933 m, 60 m, W, LIH; 668 m, 60 m, Y, LIH. All no LED	R, LIH, no LED		CIV RWY end 69 m before RENL

**LSMP AD 2.15 OTHER LIGHTING, SECONDARY POWER SUPPLY**

1	ABN/IBN location, characteristics and hours of operation	NIL
2	LDI location and LGT Anemometer location and LGT	No LDI. Anemometer: RWY 05: 220 m W of THR 05, LGTD. RWY 23: 275 m E of THR 23, LGTD.
3	TWY edge and centre line lighting	Edge: All TWY and apron area. LIL, B, LED. CL: NIL
4	Secondary power supply/switch-over time	AVBL / MAX 15 sec.
5	Remarks	MIL rotating beacon, 0.5 NM final and on both APCH centre lines. OBST: Marked and lighted (see LSMP AD 2.24.1 -1)

**LSMP AD 2.16 HELICOPTER LANDING AREA**

1	Coordinates TLOF or THR of FATO	NIL
	Geoid undulation	NIL
2	TLOF and/or FATO elevation	1460 ft
3	TLOF and FATO area dimensions, surface, strength, marking	FATO on main RWY: 05/23; 500 x 40 m, No specific marking
4	True BRG of FATO	049° / 229°
5	Declared distance available	See FATO dimensions
6	APP and FATO lighting	RWY LGT
7	Remarks	FATO on RWY between TWY M and P

## LSMP AD 2.17      ATS AIRSPACE

1	Designation and lateral limits	<b>Payerne CTR</b> 46 56 22 N 006 59 31 E - 46 52 33 N 007 04 35 E - 46 44 08 N 006 51 13 E - 46 47 56 N 006 46 09 E - 46 56 22 N 006 59 31 E
2	Vertical limits	FL 100
3	Airspace classification	D
4	ATS unit call sign Language(s)	Language: En; En and Fr for Non-Commercial VFR traffic.
5	Transition altitude	6000 ft AMSL
6	Remarks	NIL

## LSMP AD 2.18      ATS COMMUNICATION FACILITIES

Service designation	Call sign	Frequency	Hours of Operation	Remarks
1	2	3	4	5
APP	Payerne Approach	136.350	HX	Language: En
TWR	Payerne Tower	128.675 119.700	HX	Language: En; En and Fr for Non-Commercial VFR traffic ALTN FREQ
CLR DEL	Payerne Delivery	121.705	HX	

## LSMP AD 2.19      RADIO NAVIGATION AND LANDING AIDS

Type of aid, supported OPS, classification, MAG VAR, (declination)	ID	FREQ, CH NR, RPI	Hours of operation	Coordinates of transmitting antenna position	ELEV of DME antenna or GBAS; ELEV, ellipsoid HGT of reference point SBAS; ellipsoid HGT of LTP/FTP	SER volume radius from GBAS reference point	RMK
1	2	3	4	5	6	7	8
LOC 05, ILS CAT I, class I/C/2, VAR 2° E	IPN	109.95 MHz	H24	46 51 16.8N 006 56 01.6E	NIL	NIL	LOC PSN: 640 m FM THR 23. RWY 05: LOC course 046° MAG. Front course sector width 3.74°. Restricted coverage: at 17 NM +/- 15° from CL above 3700 ft AMSL linearly raising to at 17 NM +/- 35° from CL above 5500 ft AMSL; at 25 NM +/- 10° from CL above 5500 ft AMSL.
GP 05	--	333.65 MHz	H24	46 50 10.4N 006 54 17.4E	NIL	NIL	GP angle 4.7°. PSN: 207 m FM THR 05. GP HGT THR 05: 53 ft / 16.1 m.
DME 05	IPN	36Y	H24	46 51 18.1N 006 55 59.9E	1452 ft	NIL	DME co-located with LOC, reads D1.7 at THR 05 Restricted coverage: at 17 NM +/- 35° from CL above 5500 ft AMSL; at 25 NM +/- 10° from CL above 6500 ft AMSL.

Type of aid, supported OPS, classification, MAG VAR, (declination)	ID	FREQ, CH NR, RPI	Hours of operation	Coordinates of transmitting antenna position	ELEV of DME antenna or GBAS; ELEV, ellipsoid HGT of reference point SBAS; ellipsoid HGT of LTP/FTP	SER volume radius from GBAS reference point	RMK
1	2	3	4	5	6	7	8
LOC 23, ILS CAT I, class I/C/2, VAR 2° E	IPY	109.30 MHz	H24	46 50 00.1N 006 53 55.2E	NIL	NIL	LOC PSN: 355 m FM THR 05. RWY 23: LOC course 227° MAG. Front course sector width 4.1°. Restricted coverage: at 10 NM +/- 35° from CL above 3400 ft AMSL; at 18 NM +/- 10° from CL above 3400 ft AMSL.
GP 23	--	332.00 MHz	H24	46 50 55.8N 006 55 32.3E	NIL	NIL	GP angle 3.7°. PSN: 257 m FM THR 23. GP HGT THR 23: 54 ft / 16.5 m.
DME 23	IPY	30X	H24	46 49 59.1N 006 53 56.4E	1469 ft	NIL	DME co-located with LOC, reads D1.6 at THR 23 Restricted coverage: at 10 NM +/- 35° from CL above 3400 ft AMSL; at 18 NM +/- 10° from CL above 3400 ft AMSL.

## LSMP AD 2.20 LOCAL AERODROME REGULATIONS

### 1. Local flying and operational restrictions

1. PPR is mandatory for all CIV traffic.  
Procedures are published on the internet site of the civil operator [www.swissaeropole.com](http://www.swissaeropole.com).
2. Any flight to / from Payerne requires the filing of an ICAO flight plan. The PPR authorisation number must be shown in box 18 "other information".
3. SUN: AD CLSD
4. Special authorisation required:  
MON - FRI 1900 - 2100 (1800 - 2000)  
SAT 1600 - 2100 (1500 - 2000)  
HOL 0900 - 1100 (0800 - 1000), 1230 - 1900 (1130 - 1800)  
Following days are considered as holidays:
  - New Year's Day
  - 02 JAN
  - Good Friday
  - Easter Monday
  - Ascension
  - Whit Monday
  - 01 AUG
  - Monday after Federal Day of Prayer
  - Christmas Day
5. Following operations are prohibited unless duly justified:
  - Training flights
  - Aerodrome circuits (except unplanned go-around)
  - Non-commercial tourist and pure leisure flights.
6. AD closures for construction work and summer closures, are published by NOTAM.
7. GAT IFR Departure contact Payerne Delivery on 121.705 Mhz for IFR clearance and start-up.

**LSMP AD 2.23      ADDITIONAL INFORMATION****1.      List of significant points (Terminal)**

NAV point	COORD WGS84		Purpose
	N LAT	E LONG	
1	2		3
MP401	N 46 58 35.8	E 007 08 08.4	IAC LSMP
MP402	N 46 47 56.9	E 006 50 32.4	IAC LSMP
MP501	N 46 54 03.5	E 007 00 37.0	IAC LSMP
MP502	N 46 45 55.8	E 007 04 44.7	IAC LSMP
MP701	N 46 45 28.4	E 006 54 08.3	SID LSMP

**LSMP AD 2.24      AERONAUTICAL CHARTS RELATED TO AN AERODROME**

Name	Page
Aerodrome Chart	LSMP AD 2.24.1 - 1
Aerodrome Obstacle Chart - Type A - RWY 05	LSMP AD 2.24.4 - 1
Aerodrome Obstacle Chart - Type A - RWY 23	LSMP AD 2.24.4 - 3
SID RWY 05/23 - RNAV 1	LSMP AD 2.24.7 - 1
STAR RWY 05/23 - RNAV 1	LSMP AD 2.24.9 - 1
IAC ILS RWY 05 (CAT A/B/C/D)	LSMP AD 2.24.10 - 1
IAC ILS RWY 23 (CAT A/B/C/D)	LSMP AD 2.24.10 - 3
IAC RNP Z RWY 23 (CAT A/B/C/D)	LSMP AD 2.24.10 - 5

**LSMP AD 2.25      VISUAL SEGMENT SURFACE (VSS) PENETRATION**

The information on visual segment surface penetration is published on the respective instrument approach chart.  
See LSMP AD 2.24 for details.

THIS PAGE INTENTIONALLY LEFT BLANK



THIS PAGE INTENTIONALLY LEFT BLANK