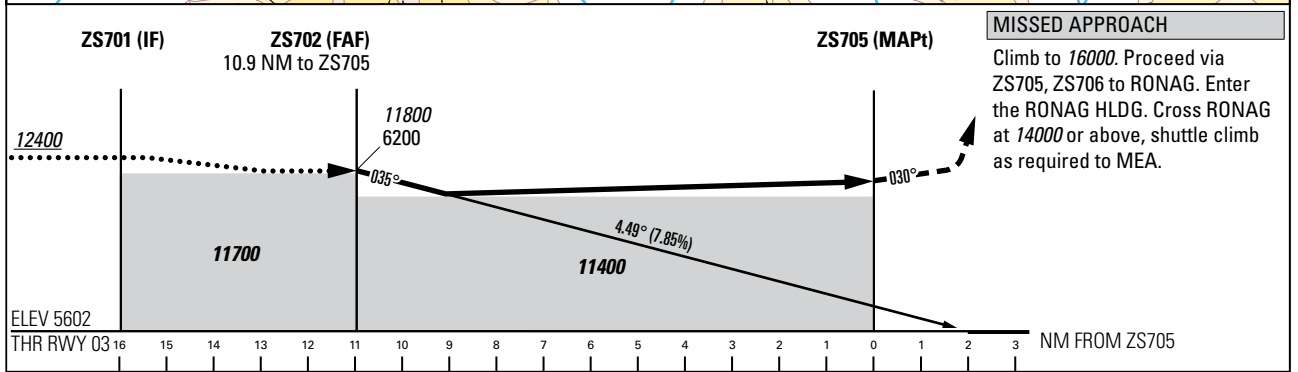
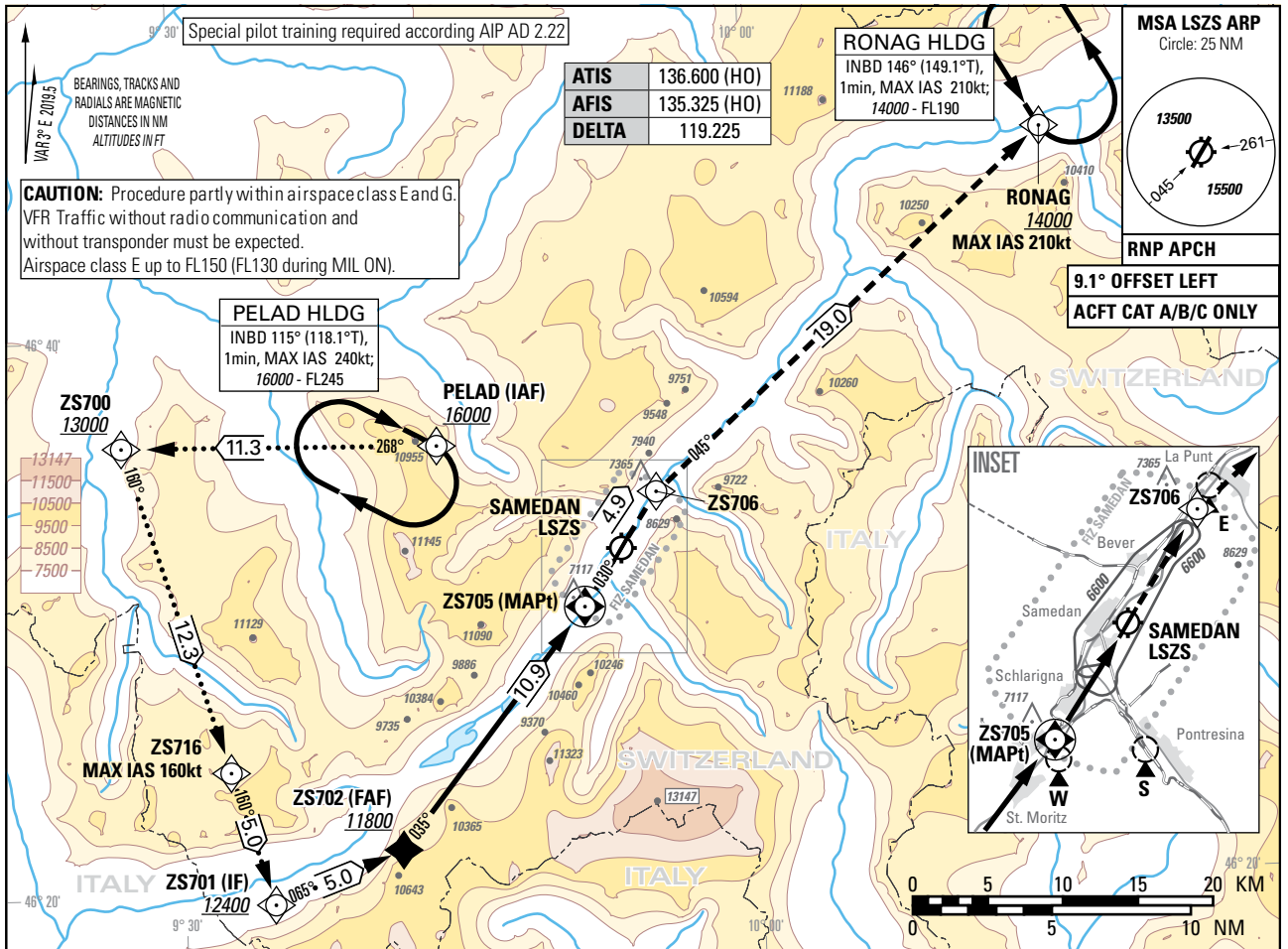


Instrument Approach Chart
(IAC)

AD ELEV 5602ft

TRANSITION LEVEL by ATC
TRANSITION ALTITUDE 16000

SAMEDAN (LSZS)
VISUAL APCH WITH RNP GUIDANCE RWY 03



MISSED APPROACH
Climb to 16000. Proceed via ZS705, ZS706 to RONAG. Enter the RONAG HLDG. Cross RONAG at 14000 or above, shuttle climb as required to MEA.

Missed APCH climb gradient requirement	NON-ALIGNED VISUAL APCH WITH RNP TRACK GUIDANCE			ROD	GS kt	80	100	120	140	160	180
	A	B	C		FT/MIN	636	795	954	1113	1272	1431
2.5%	MDA(H) 11400 (5798)			DIST ZS705	10.9	10	9	8	7	6	5
				DIST THR	12.9	12	11	10	9	8	7
				ALT FT	11800	11370	10890	10420	9940	9460	8980

COMMUNICATION FAILURE PROCEDURE
In case of communication failure after having passed the IAF:
- Set transponder on 7600.
- Continue approach.
- In case of missed approach perform two HLDG patterns at RONAG.
- If radio contact is not re-established, proceed to ALTN AD.

REMARK
- ROD 1000ft/min exceeded with GS > 125kt in final approach.
- Approach clearance includes the clearance to leave and re-enter controlled airspace.
- ICAO obstacle protection surface penetrated by a hill BTN ZS705 and THR 03.
- PAPI at 4.49°.

CAUTION
- Altitude adjustments for cold temperature conditions required by the flight crew.

COR: chart renaming, PBN box (WEF 20FEB2025)

THIS PAGE INTENTIONALLY LEFT BLANK