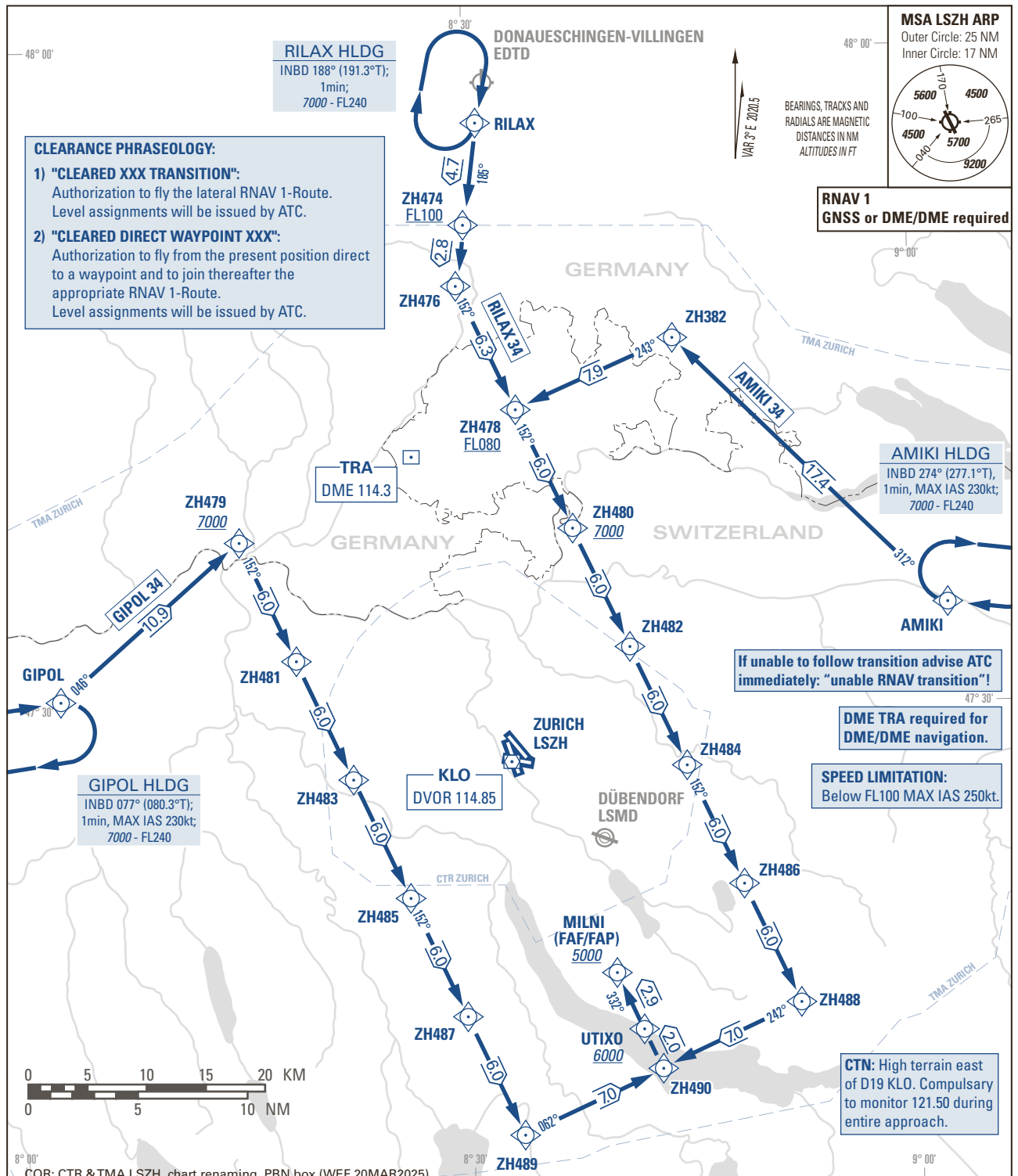


STANDARD ARRIVAL CHART -
INSTRUMENT (STAR) - ICAO

TRANSITION TO FINAL APPROACH

ZURICH (LSZH)
RNAV RWY 34

AMIKI 34 GIPOL 34 RILAX 34



COMMUNICATION FAILURE PROCEDURE:

- Before reception of a "transition" CLR: Switch transponder code to 7600 and continue FLT in accordance with COM Failure PROC published on relevant STAR Chart.
- After reception of a "transition" CLR: Switch transponder code to 7600 and continue FLT in accordance with lateral description and with respect to the MCA of the PROC with subsequent final APCH of a conventional Standard Instrument Approach Procedure.
- After reception of a CLR direct to a WPT on a transition: Switch transponder code to 7600 and continue FLT direct to the cleared WPT, rejoin transition in accordance with lateral description and with respect to the MCA of the PROC with subsequent final APCH of a conventional Standard Instrument Approach Procedure.
- When being Radar Vektored to a WPT on a transition: Switch transponder code to 7600 and resume own navigation to rejoin transition in the most direct way and proceed in accordance with lateral description and with respect to the MCA of the PROC with subsequent final APCH of a conventional Standard Instrument Approach Procedure.

THIS PAGE INTENTIONALLY LEFT BLANK