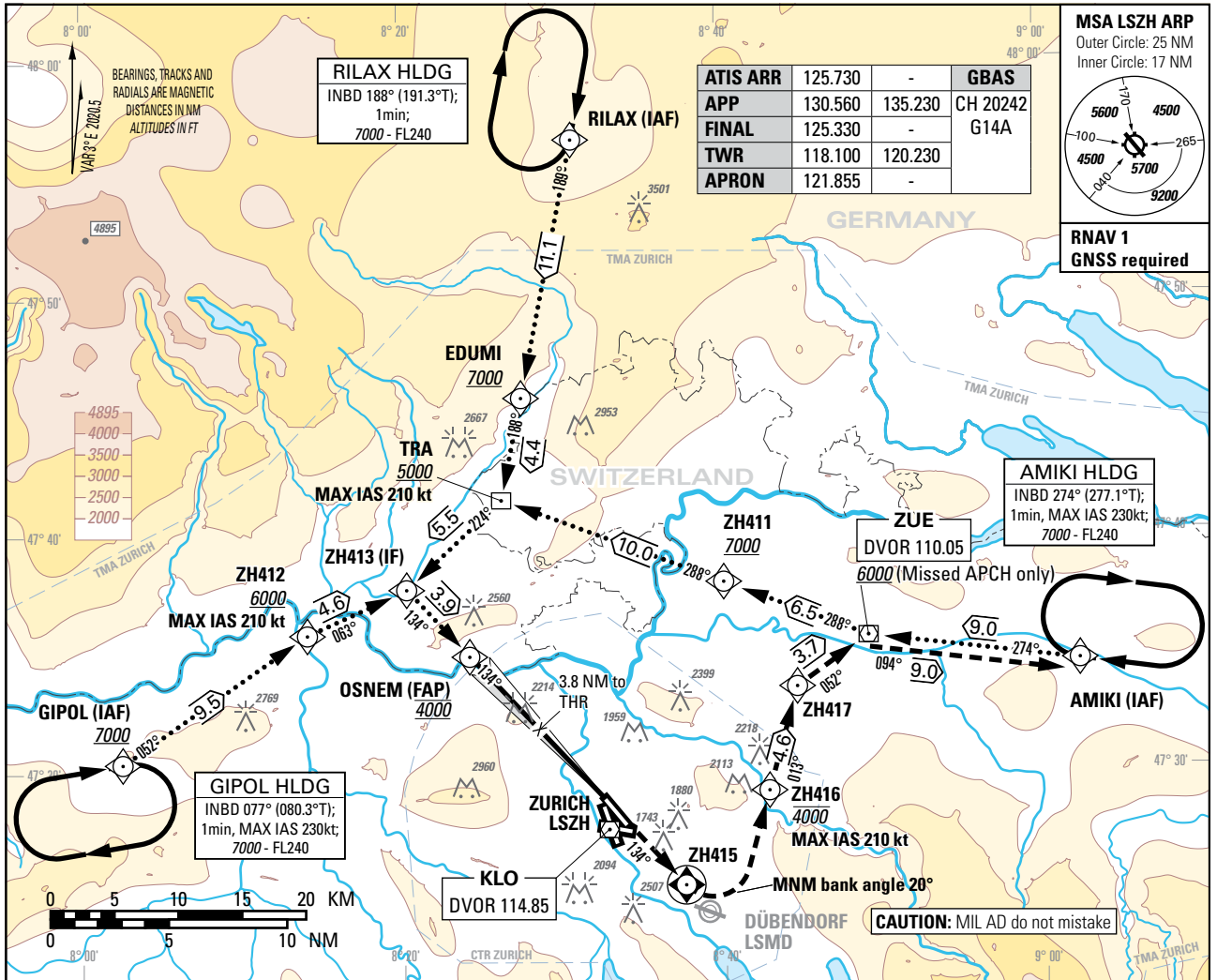


Instrument Approach Chart
(IAC) - ICAO

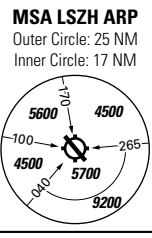
AD ELEV 1417ft

TRANSITION LEVEL by ATC
TRANSITION ALTITUDE 7000

ZURICH (LSZH)
GLS RWY 14



ATIS ARR	125.730	-	GBAS
APP	130.560	135.230	CH 20242
FINAL	125.330	-	G14A
TWR	118.100	120.230	
APRON	121.855	-	

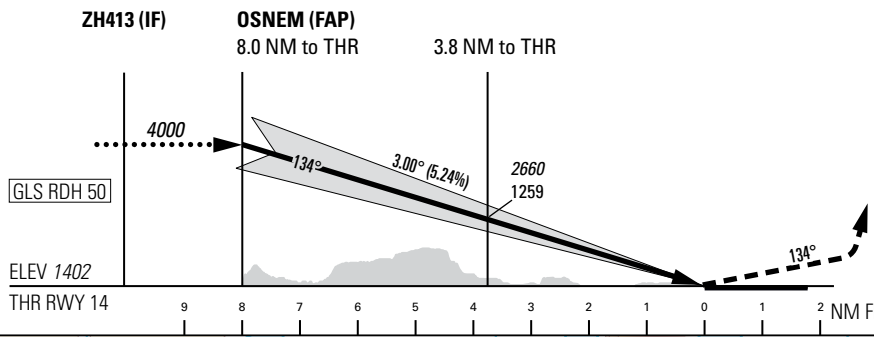


RNAV 1
GNSS required

AMIKI HLDG
INBD 274° (277.1°T);
1min, MAX IAS 230kt;
7000 - FL240

GIPOL HLDG
INBD 077° (080.3°T);
1min, MAX IAS 230kt;
7000 - FL240

RILAX HLDG
INBD 188° (191.3°T);
1min;
7000 - FL240



MISSED APPROACH
Initial climb clearance 4000.

Climb straight ahead to ZH415. At ZH415 turn left to ZH416 (MNM bank angle 20°). At ZH416 proceed via ZH417, ZUE to AMIKI. Cross ZH416 at or below 4000. After passing ZH416 continue climb to 7000. Cross ZUE at or above 6000. MAX IAS 210kt until ZH416. After passing ZH416 MNM climb gradient 6.7% up to 6000 due to ASP restrictions.

DIST THR	8	7	6	5	4	3	2	1
recommended CROSSING ALT	4000	3680	3360	3040	2730	2410	2090	1770
recommended CROSSING HGT	2600	2280	1960	1640	1320	1000	690	370

ROD	GS kt	90	110	130	150
	FT/MIN	478	584	690	796

Missed APCH climb gradient requirement	STRAIGHT-IN APPROACH					
	OBSTACLE CLEARANCE ALTITUDE (HEIGHT)					
To Altitude	A	B	C	D	D _L	
2.5%	N/A	1553 (151)	1562 (160)	1573 (171)	1586 (184)	1593 (191)
DECISION ALTITUDE (HEIGHT)						
2.5%	N/A	1602 (200)				

COR: CTR & TMA LSZH, PBN box, editorial (WEF 20MAR2025)

THIS PAGE INTENTIONALLY LEFT BLANK