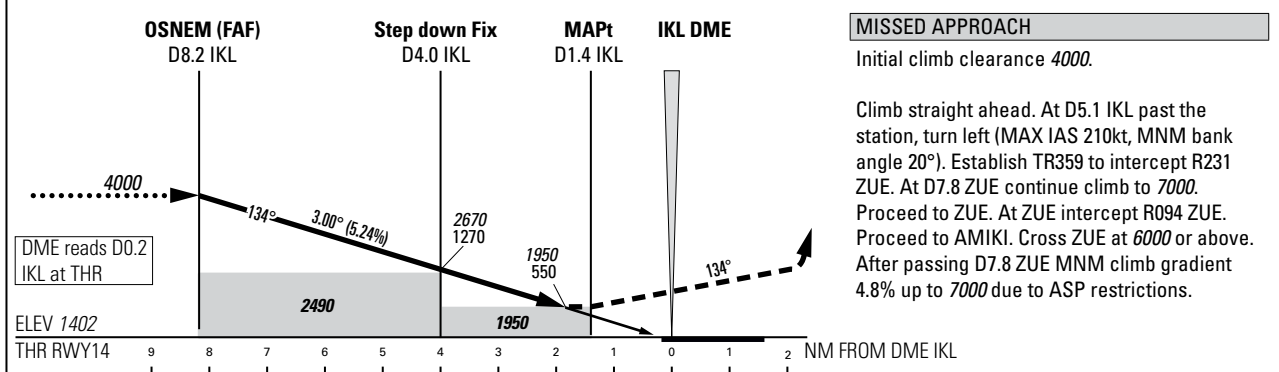
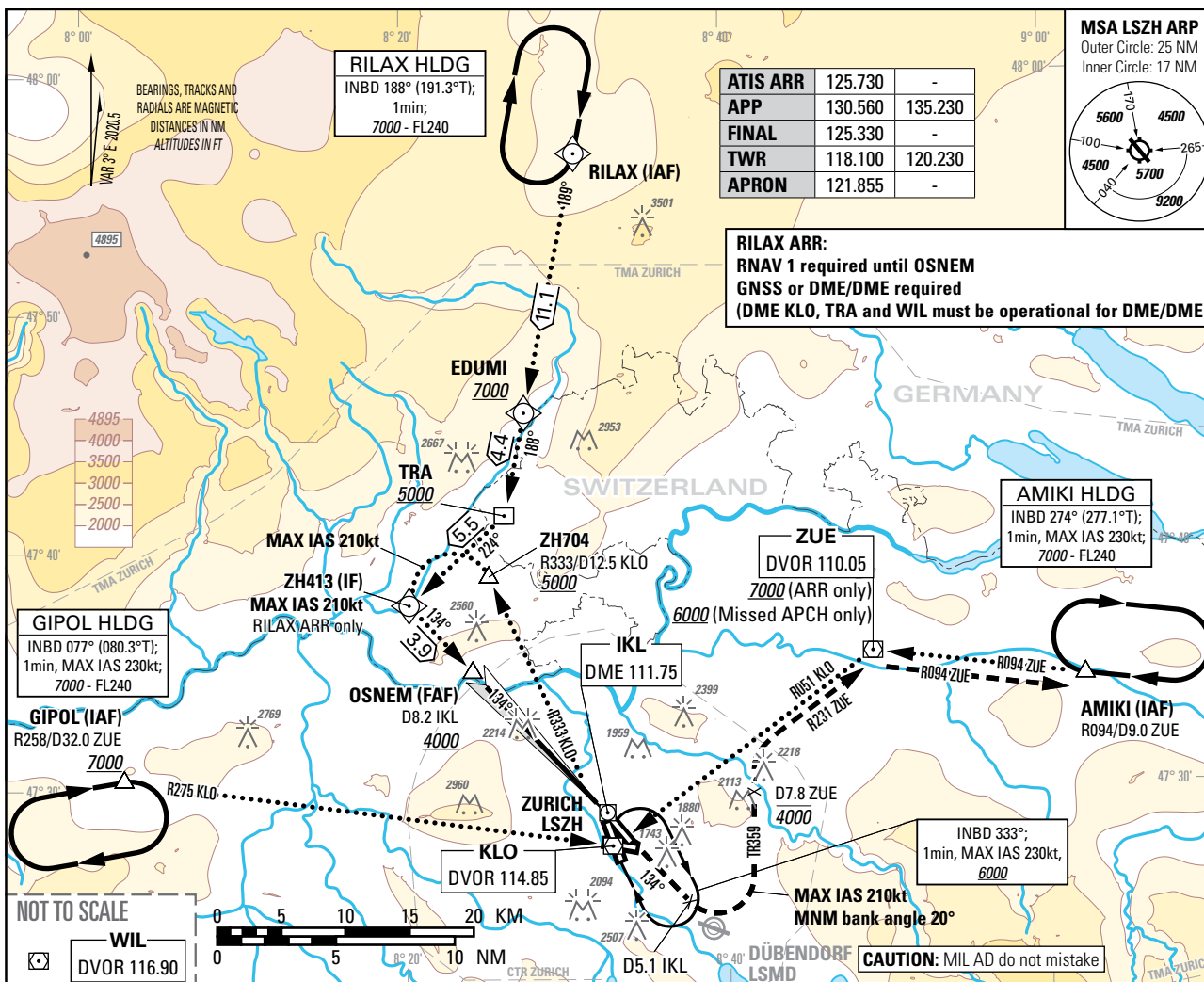


Instrument Approach Chart  
(IAC) - ICAO

AD ELEV 1417ft

TRANSITION LEVEL by ATC  
TRANSITION ALTITUDE 7000

ZURICH (LSZH)  
LOC RWY 14



DIST THR	8	7	6	5	4	3	2
recommended CROSSING ALT	3940	3620	3300	2990	2670	2350	2030
recommended CROSSING HGT	2540	2220	1900	1580	1270	950	630

ROD	GS kt	90	110	130	150
	FT/MIN	478	584	690	796

OBSTACLE CLERANCE ALTITUDE (HEIGHT)	A	B	C	D	D <sub>L</sub>
STRAIGHT-IN APPROACH	1950 (550)				

COR: CTR & TMA LSZH, editorial (WEF 20MAR2025)

THIS PAGE INTENTIONALLY LEFT BLANK