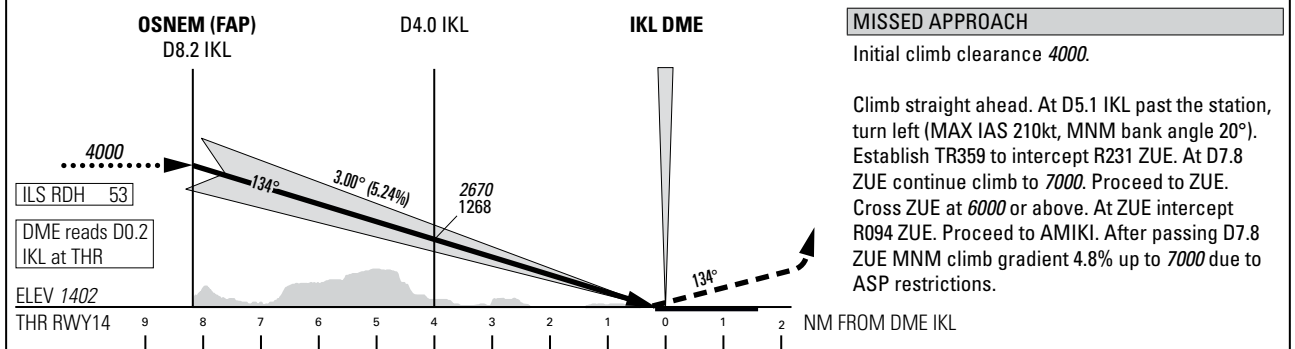
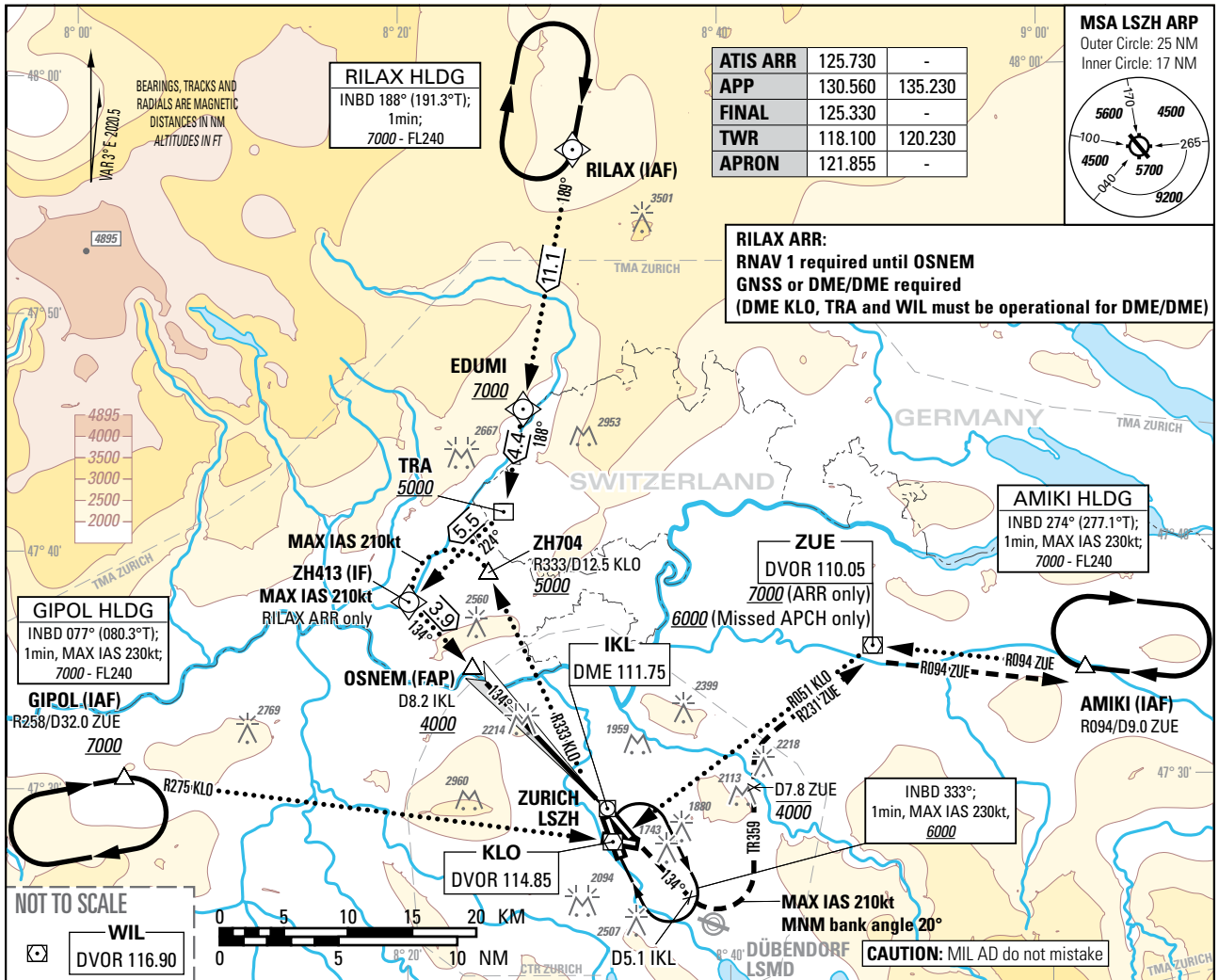


Instrument Approach Chart
(IAC) - ICAO

AD ELEV 1417ft

TRANSITION LEVEL by ATC
TRANSITION ALTITUDE 7000

ZURICH (LSZH)
ILS RWY 14
CAT II & III



OBSTACLE CLEARANCE ALTITUDE (HEIGHT)						
STRAIGHT-IN APPROACH		A	B	C	D	D _L
CAT I	pressure altimeter	1553 (151)	1562 (160)	1573 (171)	1586 (184)	1593 (191)
	radio altimeter	1454 (52)	1465 (63)	1477 (75)	1492 (90)	1502 (100)
CAT II	radio altimeter and autopilot	1452 (50)	1463 (61)	1477 (75)	1491 (89)	1499 (97)
	DECISION ALTITUDE (HEIGHT) ¹⁾	A	B	C	D	D _L
CAT I	pressure altimeter	1602 (200)				
	radio altimeter and autopilot	1502 (100)				

ROD	GS kt	90	110	130	150
	FT/MIN	478	584	690	796

NOTE
¹⁾ Radio altimeter reading at CAT I DH 187ft, at CAT II DH 95ft, for lower minima PPR FOCA.

COR: CTR & TMA LSZH, PBN box, editorial (WEF 20MAR2025)

THIS PAGE INTENTIONALLY LEFT BLANK