

SWITZERLAND

TEL: +41 (0) 43 931 61 68

Telegraphic address:

AFTN: LSSAYOYX

E-mail: aip@skyguide.ch

skyguide

AIP Services
CH-8602 WANGEN
BEI DÜBENDORF

AIP

AMDT 009 2025

Effective Date 04 SEP 2025

RMK

Filing instruction: Insert this AMDT into AIP after inserting AIRAC AMDT of same effective date, if issued.

1. Insert the following pages:

GEN 0.2 - 11/12
GEN 0.4 - 1/2
GEN 0.4 - 3/4
GEN 0.4 - 5/6
GEN 0.4 - 7/8
AD 0.6 - 1/2
AD 0.6 - 3/4
AD 0.6 - 5/6
AD 0.6 - 7/8
AD 0.6 - 9/10
AD 0.6 - 11/12
AD 0.6 - 13/14
AD 1.3 - 1/2
AD 1.3 - 3/4
AD 1.3 - 5/6
LSZB AD 2 - 3/4
LSZC AD 2.24.10 - 3/4
LSZA AD 2.24.10 - 5/6
LSZA AD 2.25.10 - 7/8
LSZS AD 2.24.11 - 1/2

Destroy the following pages:

04 SEP 2025	GEN 0.2 - 11/12	07 AUG 2025
04 SEP 2025	GEN 0.4 - 1/2	AIRAC 04 SEP 2025
04 SEP 2025	GEN 0.4 - 3/4	AIRAC 04 SEP 2025
04 SEP 2025	GEN 0.4 - 5/6	AIRAC 04 SEP 2025
04 SEP 2025	GEN 0.4 - 7/8	AIRAC 04 SEP 2025
04 SEP 2025	AD 0.6 - 1/2	15 MAY 2025
04 SEP 2025	AD 0.6 - 3/4	15 MAY 2025
04 SEP 2025	AD 0.6 - 5/6	15 MAY 2025
04 SEP 2025	AD 0.6 - 7/8	15 MAY 2025
04 SEP 2025	AD 0.6 - 9/10	15 MAY 2025
04 SEP 2025	AD 0.6 - 11/12	15 MAY 2025
04 SEP 2025	AD 0.6 - 13/14	15 MAY 2025
04 SEP 2025	AD 1.3 - 1/2	AIRAC 25 JAN 2024
04 SEP 2025	AD 1.3 - 3/4	15 MAY 2025
04 SEP 2025	AD 1.3 - 5/6	AIRAC 10 JUL 2025
04 SEP 2025	LSZB AD 2 - 3/4	12 JUN 2025
04 SEP 2025	LSZC AD 2.24.10 - 3/4	07 AUG 2025
04 SEP 2025	LSZA AD 2.24.10 - 5/6	07 AUG 2025
04 SEP 2025	LSZA AD 2.25.10 - 7/8	07 AUG 2025
04 SEP 2025	LSZS AD 2.24.11 - 1/2	07 AUG 2025

2. Record entry of amendment on page GEN 0.2

3. This AIP AMDT incorporates information contained in the following publications:

NOTAM: NIL

AIP SUP: NIL

AIC: NIL

Enroute chart: NIL

4. Following SUP and AIRAC SUP are still in force:

Checklist SUP: 003/2024, 008/2024, 002/2025, 003/2025, 004/2025

Checklist AIRAC SUP: NIL

Insert the following pages:

LSZH AD 2 - 33/34

Destroy the following pages:

04 SEP 2025 LSZH AD 2 - 33/34

07 AUG 2025

AIP Amendment			
NR/Year	Effective date	Date inserted	Inserted by
006/2021	17-Jun-2021	17-Jun-2021	
007/2021	15-Jul-2021	15-Jul-2021	
008/2021	12-Aug-2021	12-Aug-2021	
009/2021	09-Sep-2021	09-Sep-2021	
010/2021	07-Oct-2021	07-Oct-2021	
011/2021	04-Nov-2021	04-Nov-2021	
012/2021	02-Dec-2021	02-Dec-2021	
013/2021	30-Dec-2021	30-Dec-2021	
001/2022	27-Jan-2022	27-Jan-2022	
002/2022	24-Feb-2022	24-Feb-2022	
003/2022	24-Mar-2022	24-Mar-2022	
004/2022	21-Apr-2022	21-Apr-2022	
005/2022	19-May-2022	19-May-2022	
006/2022	16-Jun-2022	16-Jun-2022	
007/2022	14-Jul-2022	14-Jul-2022	
008/2022	11-Aug-2022	11-Aug-2022	
009/2022	08-Sep-2022	08-Sep-2022	
010/2022	06-Oct-2022	06-Oct-2022	
011/2022	03-Nov-2022	03-Nov-2022	
012/2022	01-Dec-2022	01-Dec-2022	
013/2022	29-Dec-2022	29-Dec-2022	
001/2023	26-Jan-2023	26-Jan-2023	
002/2023	23-Feb-2023	23-Feb-2023	
003/2023	23-Mar-2023	23-Mar-2023	
004/2023	20-Apr-2023	20-Apr-2023	
005/2023	18-May-2023	18-May-2023	
006/2023	15-Jun-2023	15-Jun-2023	
007/2023	13-Jul-2023	13-Jul-2023	
008/2023	10-Aug-2023	10-Aug-2023	
009/2023	07-Sep-2023	07-Sep-2023	
010/2023	05-Oct-2023	05-Oct-2023	
011/2023	02-Nov-2023	02-Nov-2023	
012/2023	30-Nov-2023	30-Nov-2023	
013/2023	28-Dec-2023	28-Dec-2023	
001/2024	25-Jan-2024	25-Jan-2024	
002/2024	22-Feb-2024	22-Feb-2024	
003/2024	21-Mar-2024	21-Mar-2024	
004/2024	18-Apr-2024	18-Apr-2024	
005/2024	16-May-2024	16-May-2024	

AIP Amendment			
NR/Year	Effective date	Date inserted	Inserted by
006/2024	13-Jun-2024	13-Jun-2024	
007/2024	11-Jul-2024	11-Jul-2024	
008/2024	08-Aug-2024	08-Aug-2024	
009/2024	05-Sep-2024	05-Sep-2024	
010/2024	03-Oct-2024	03-Oct-2024	
011/2024	31-Oct-2024	31-Oct-2024	
012/2024	28-Nov-2024	28-Nov-2024	
013/2024	26-Dec-2024	26-Dec-2024	
001/2025	23-Jan-2025	23-Jan-2025	
002/2025	20-Feb-2025	20-Feb-2025	
003/2025	20-Mar-2025	20-Mar-2025	
004/2025	17-Apr-2025	17-Apr-2025	
005/2025	15-May-2025	15-May-2025	
006/2025	12-Jun-2025	12-Jun-2025	
007/2025	10-Jul-2025	10-Jul-2025	
008/2025	07-Aug-2025	07-Aug-2025	
009/2025	04-Sep-2025	04-Sep-2025	

GEN 0.4 CHECKLIST OF AIP PAGES

Page	Date	Page	Date	Page	Date
PART 1 - GENERAL (GEN)					
		GEN 1.7 - 16	07 AUG 2025	GEN 3.3 - 5	AIRAC 13 JUN 2024
		GEN 1.7 - 17	07 AUG 2025	GEN 3.3 - 6	AIRAC 13 JUN 2024
		GEN 1.7 - 18	07 AUG 2025	GEN 3.3 - 7	AIRAC 13 JUN 2024
GEN 0.1 - 1	10 AUG 2023	GEN 1.7 - 19	07 AUG 2025	GEN 3.3 - 8	AIRAC 13 JUN 2024
GEN 0.1 - 2	10 AUG 2023	GEN 1.7 - 20	07 AUG 2025	GEN 3.4 - 1	02 DEC 2021
GEN 0.1 - 3	15 MAY 2025	GEN 1.7 - 21	07 AUG 2025	GEN 3.4 - 2	02 DEC 2021
GEN 0.1 - 4	15 MAY 2025	GEN 1.7 - 22	07 AUG 2025	GEN 3.4 - 3	21 MAR 2024
GEN 0.2 - 1	AIRAC 26 MAY 2016	GEN 1.7 - 23	16 MAY 2024	GEN 3.4 - 4	21 MAR 2024
GEN 0.2 - 2	AIRAC 26 MAY 2016	GEN 1.7 - 24	16 MAY 2024	GEN 3.4 - 5	AIRAC 20 MAY 2021
GEN 0.2 - 3	AIRAC 02 NOV 2023	GEN 1.7 - 25	20 APR 2023	GEN 3.4 - 6	AIRAC 20 MAY 2021
GEN 0.2 - 4	AIRAC 02 NOV 2023	GEN 1.7 - 26	20 APR 2023	GEN 3.4 - 7	AIRAC 20 MAY 2021
GEN 0.2 - 5	AIRAC 04 SEP 2025	GEN 2.1 - 1	10 AUG 2023	GEN 3.4 - 8	AIRAC 20 MAY 2021
GEN 0.2 - 6	AIRAC 04 SEP 2025	GEN 2.1 - 2	10 AUG 2023	GEN 3.5 - 1	14 JUL 2022
GEN 0.2 - 7	AIRAC 30 NOV 2023	GEN 2.1 - 3	21 JUL 2016	GEN 3.5 - 2	14 JUL 2022
GEN 0.2 - 8	AIRAC 30 NOV 2023	GEN 2.1 - 4	21 JUL 2016	GEN 3.5 - 3	23 APR 2020
GEN 0.2 - 9	AIRAC 30 NOV 2023	GEN 2.2 - 1	28 NOV 2024	GEN 3.5 - 4	23 APR 2020
GEN 0.2 - 10	AIRAC 30 NOV 2023	GEN 2.2 - 2	28 NOV 2024	GEN 3.5 - 5	23 APR 2020
GEN 0.2 - 11	04 SEP 2025	GEN 2.2 - 3	11 JUL 2024	GEN 3.5 - 6	23 APR 2020
GEN 0.2 - 12	04 SEP 2025	GEN 2.2 - 4	11 JUL 2024	GEN 3.5 - 7	17 APR 2025
GEN 0.3 - 1	07 AUG 2025	GEN 2.2 - 5	AIRAC 20 FEB 2025	GEN 3.5 - 8	17 APR 2025
GEN 0.3 - 2	07 AUG 2025	GEN 2.2 - 6	AIRAC 20 FEB 2025	GEN 3.5 - 9	17 APR 2025
GEN 0.4 - 1	04 SEP 2025	GEN 2.2 - 7	AIRAC 20 FEB 2025	GEN 3.5 - 10	17 APR 2025
GEN 0.4 - 2	04 SEP 2025	GEN 2.2 - 8	AIRAC 20 FEB 2025	GEN 3.5 - 11	17 APR 2025
GEN 0.4 - 3	04 SEP 2025	GEN 2.2 - 9	AIRAC 20 FEB 2025	GEN 3.5 - 12	17 APR 2025
GEN 0.4 - 4	04 SEP 2025	GEN 2.2 - 10	AIRAC 20 FEB 2025	GEN 3.6 - 1	16 JUN 2022
GEN 0.4 - 5	04 SEP 2025	GEN 2.3 - 1	17 APR 2025	GEN 3.6 - 2	16 JUN 2022
GEN 0.4 - 6	04 SEP 2025	GEN 2.3 - 2	17 APR 2025	GEN 3.6 - 3	13 JUN 2024
GEN 0.4 - 7	04 SEP 2025	GEN 2.3 - 3	17 APR 2025	GEN 3.6 - 4	13 JUN 2024
GEN 0.4 - 8	04 SEP 2025	GEN 2.3 - 4	17 APR 2025	GEN 3.6 - 5	15 MAY 2025
GEN 0.5 - 1	11 AUG 2022	GEN 2.3 - 5	17 APR 2025	GEN 3.6 - 6	15 MAY 2025
GEN 0.5 - 2	11 AUG 2022	GEN 2.3 - 6	17 APR 2025	GEN 4.1 - 1	26 DEC 2024
GEN 0.6 - 1	26 DEC 2024	GEN 2.3 - 7	17 APR 2025	GEN 4.1 - 2	26 DEC 2024
GEN 0.6 - 2	26 DEC 2024	GEN 2.3 - 8	17 APR 2025	GEN 4.1 - 3	07 SEP 2023
GEN 0.6 - 3	26 DEC 2024	GEN 2.4 - 1	AIRAC 25 JAN 2024	GEN 4.1 - 4	07 SEP 2023
GEN 0.6 - 4	26 DEC 2024	GEN 2.4 - 2	AIRAC 25 JAN 2024	GEN 4.1 - 5	15 MAY 2025
GEN 1.1 - 1	17 JUN 2021	GEN 2.4 - 3	AIRAC 10 JUL 2025	GEN 4.1 - 6	15 MAY 2025
GEN 1.1 - 2	17 JUN 2021	GEN 2.4 - 4	AIRAC 10 JUL 2025	GEN 4.1 - 7	15 MAY 2025
GEN 1.2 - 1	28 NOV 2024	GEN 2.4 - 5	AIRAC 10 JUL 2025	GEN 4.1 - 8	15 MAY 2025
GEN 1.2 - 2	28 NOV 2024	GEN 2.4 - 6	AIRAC 10 JUL 2025	GEN 4.1 - 9	07 SEP 2023
GEN 1.2 - 3	28 NOV 2024	GEN 2.4 - 7	AIRAC 10 JUL 2025	GEN 4.1 - 10	07 SEP 2023
GEN 1.2 - 4	28 NOV 2024	GEN 2.4 - 8	AIRAC 10 JUL 2025	GEN 4.1 - 11	13 JUN 2024
GEN 1.2 - 5	15 MAY 2025	GEN 2.5 - 1	AIRAC 20 MAR 2025	GEN 4.1 - 12	13 JUN 2024
GEN 1.2 - 6	15 MAY 2025	GEN 2.5 - 2	AIRAC 20 MAR 2025	GEN 4.1 - 13	13 JUN 2024
GEN 1.2 - 7	28 NOV 2024	GEN 2.6 - 1	10 AUG 2023	GEN 4.1 - 14	13 JUN 2024
GEN 1.2 - 8	28 NOV 2024	GEN 2.6 - 2	10 AUG 2023	GEN 4.1 - 15	26 DEC 2024
GEN 1.2 - 9	14 JUL 2022	GEN 2.6 - 3	10 DEC 2015	GEN 4.1 - 16	26 DEC 2024
GEN 1.2 - 10	14 JUL 2022	GEN 2.6 - 4	10 DEC 2015	GEN 4.1 - 17	26 DEC 2024
GEN 1.3 - 1	11 DEC 2014	GEN 2.7 - 1	03 OCT 2024	GEN 4.1 - 18	26 DEC 2024
GEN 1.3 - 2	11 DEC 2014	GEN 2.7 - 2	03 OCT 2024	GEN 4.1 - 19	26 DEC 2024
GEN 1.4 - 1	11 DEC 2014	GEN 2.7 - 3	03 OCT 2024	GEN 4.1 - 20	26 DEC 2024
GEN 1.4 - 2	11 DEC 2014	GEN 2.7 - 4	03 OCT 2024	GEN 4.1 - 21	26 DEC 2024
GEN 1.5 - 1	08 AUG 2024	GEN 2.7 - 5	03 OCT 2024	GEN 4.1 - 22	26 DEC 2024
GEN 1.5 - 2	08 AUG 2024	GEN 2.7 - 6	03 OCT 2024	GEN 4.1 - 23	15 MAY 2025
GEN 1.6 - 1	25 MAR 2021	GEN 3.1 - 1	10 AUG 2023	GEN 4.1 - 24	15 MAY 2025
GEN 1.6 - 2	25 MAR 2021	GEN 3.1 - 2	10 AUG 2023	GEN 4.1 - 25	26 DEC 2024
GEN 1.7 - 1	07 AUG 2025	GEN 3.1 - 3	20 MAR 2025	GEN 4.1 - 26	26 DEC 2024
GEN 1.7 - 2	07 AUG 2025	GEN 3.1 - 4	20 MAR 2025	GEN 4.1 - 27	26 DEC 2024
GEN 1.7 - 3	07 AUG 2025	GEN 3.1 - 5	18 APR 2024	GEN 4.1 - 28	26 DEC 2024
GEN 1.7 - 4	07 AUG 2025	GEN 3.1 - 6	18 APR 2024	GEN 4.1 - 29	26 DEC 2024
GEN 1.7 - 5	07 AUG 2025	GEN 3.1 - 7	18 APR 2024	GEN 4.1 - 30	26 DEC 2024
GEN 1.7 - 6	07 AUG 2025	GEN 3.1 - 8	18 APR 2024	GEN 4.1 - 31	26 DEC 2024
GEN 1.7 - 7	07 AUG 2025	GEN 3.2 - 1	AIRAC 01 DEC 2022	GEN 4.1 - 32	26 DEC 2024
GEN 1.7 - 8	07 AUG 2025	GEN 3.2 - 2	AIRAC 01 DEC 2022	GEN 4.1 - 33	26 DEC 2024
GEN 1.7 - 9	07 AUG 2025	GEN 3.2 - 3	11 DEC 2014	GEN 4.1 - 34	26 DEC 2024
GEN 1.7 - 10	07 AUG 2025	GEN 3.2 - 4	11 DEC 2014	GEN 4.1 - 35	26 DEC 2024
GEN 1.7 - 11	07 AUG 2025	GEN 3.3 - 1	AIRAC 29 DEC 2022	GEN 4.1 - 36	26 DEC 2024
GEN 1.7 - 12	07 AUG 2025	GEN 3.3 - 2	AIRAC 29 DEC 2022	GEN 4.1 - 37	26 DEC 2024
GEN 1.7 - 13	07 AUG 2025	GEN 3.3 - 3	09 SEP 2021	GEN 4.1 - 38	26 DEC 2024
GEN 1.7 - 14	07 AUG 2025	GEN 3.3 - 4	09 SEP 2021	GEN 4.1 - 39	10 JUL 2025
GEN 1.7 - 15	07 AUG 2025				

Page	Date	Page	Date	Page	Date
GEN 4.1 - 40	10 JUL 2025	GEN 4.2 - 17	20 FEB 2025	ENR 1.12 - 2	28 MAY 2015
GEN 4.1 - 41	10 JUL 2025	GEN 4.2 - 18	20 FEB 2025	ENR 1.12 - 3	28 MAY 2015
GEN 4.1 - 42	10 JUL 2025	GEN 4.2 - 19	30 MAR 2017	ENR 1.12 - 4	28 MAY 2015
GEN 4.1 - 43	10 JUL 2025	GEN 4.2 - 20	30 MAR 2017	ENR 1.13 - 1	28 MAY 2015
GEN 4.1 - 44	10 JUL 2025	GEN 4.2 - 21	30 MAR 2017	ENR 1.13 - 2	28 MAY 2015
GEN 4.1 - 45	10 JUL 2025	GEN 4.2 - 22	30 MAR 2017	ENR 1.14 - 1	10 AUG 2023
GEN 4.1 - 46	10 JUL 2025			ENR 1.14 - 2	10 AUG 2023
GEN 4.1 - 47	10 JUL 2025			ENR 2.1 - 1	AIRAC 20 FEB 2025
GEN 4.1 - 48	10 JUL 2025	PART 2 - EN-ROUTE (ENR)		ENR 2.1 - 2	AIRAC 20 FEB 2025
GEN 4.1 - 49	26 DEC 2024			ENR 2.1 - 3	AIRAC 20 MAR 2025
GEN 4.1 - 50	26 DEC 2024	ENR 0.1 - 1	10 AUG 2023	ENR 2.1 - 4	AIRAC 20 MAR 2025
GEN 4.1 - 51	26 DEC 2024	ENR 0.1 - 2	10 AUG 2023	ENR 2.1 - 5	AIRAC 20 MAR 2025
GEN 4.1 - 52	26 DEC 2024	ENR 0.2 - 1	26 JAN 2023	ENR 2.1 - 6	AIRAC 20 MAR 2025
GEN 4.1 - 53	26 DEC 2024	ENR 0.2 - 2	26 JAN 2023	ENR 2.1 - 7	AIRAC 20 MAR 2025
GEN 4.1 - 54	26 DEC 2024	ENR 0.3 - 1	26 JAN 2023	ENR 2.1 - 8	AIRAC 20 MAR 2025
GEN 4.1 - 55	26 DEC 2024	ENR 0.3 - 2	26 JAN 2023	ENR 2.1 - 9	AIRAC 20 MAR 2025
GEN 4.1 - 56	26 DEC 2024	ENR 0.4 - 1	26 JAN 2023	ENR 2.1 - 10	AIRAC 20 MAR 2025
GEN 4.1 - 57	26 DEC 2024	ENR 0.4 - 2	26 JAN 2023	ENR 2.1 - 11	AIRAC 20 MAR 2025
GEN 4.1 - 58	26 DEC 2024	ENR 0.5 - 1	26 JAN 2023	ENR 2.1 - 12	AIRAC 20 MAR 2025
GEN 4.1 - 59	26 DEC 2024	ENR 0.5 - 2	26 JAN 2023	ENR 2.1 - 13	17 APR 2025
GEN 4.1 - 60	26 DEC 2024	ENR 0.6 - 1	15 MAY 2025	ENR 2.1 - 14	17 APR 2025
GEN 4.1 - 61	26 DEC 2024	ENR 0.6 - 2	15 MAY 2025	ENR 2.1 - 15	AIRAC 25 MAR 2021
GEN 4.1 - 62	26 DEC 2024	ENR 0.6 - 3	15 MAY 2025	ENR 2.1 - 16	AIRAC 25 MAR 2021
GEN 4.1 - 63	26 DEC 2024	ENR 0.6 - 4	15 MAY 2025	ENR 2.1 - 17	AIRAC 25 MAR 2021
GEN 4.1 - 64	26 DEC 2024	ENR 1.1 - 1	AIRAC 31 OCT 2024	ENR 2.1 - 18	AIRAC 25 MAR 2021
GEN 4.1 - 65	26 DEC 2024	ENR 1.1 - 2	AIRAC 31 OCT 2024	ENR 2.1 - 19	AIRAC 20 MAR 2025
GEN 4.1 - 66	26 DEC 2024	ENR 1.1 - 3	15 MAY 2025	ENR 2.1 - 20	AIRAC 20 MAR 2025
GEN 4.1 - 67	26 DEC 2024	ENR 1.1 - 4	15 MAY 2025	ENR 2.1 - 21	AIRAC 21 MAR 2024
GEN 4.1 - 68	26 DEC 2024	ENR 1.2 - 1	20 AUG 2015	ENR 2.1 - 22	AIRAC 21 MAR 2024
GEN 4.1 - 69	26 DEC 2024	ENR 1.2 - 2	20 AUG 2015	ENR 2.1 - 23	AIRAC 20 MAR 2025
GEN 4.1 - 70	26 DEC 2024	ENR 1.3 - 1	15 MAY 2025	ENR 2.1 - 24	AIRAC 20 MAR 2025
GEN 4.1 - 71	26 DEC 2024	ENR 1.3 - 2	15 MAY 2025	ENR 2.1 - 25	AIRAC 20 MAR 2025
GEN 4.1 - 72	26 DEC 2024	ENR 1.3 - 3	15 MAY 2025	ENR 2.1 - 26	AIRAC 20 MAR 2025
GEN 4.1 - 73	26 DEC 2024	ENR 1.3 - 4	15 MAY 2025	ENR 2.2 - 1	AIRAC 20 FEB 2025
GEN 4.1 - 74	26 DEC 2024	ENR 1.4 - 1	AIRAC 20 MAR 2025	ENR 2.2 - 2	AIRAC 20 FEB 2025
GEN 4.1 - 75	26 DEC 2024	ENR 1.4 - 2	AIRAC 20 MAR 2025	ENR 2.2 - 3	20 MAR 2025
GEN 4.1 - 76	26 DEC 2024	ENR 1.4 - 3	11 JUL 2024	ENR 2.2 - 4	20 MAR 2025
GEN 4.1 - 77	26 DEC 2024	ENR 1.4 - 4	11 JUL 2024	ENR 2.2 - 5	20 MAR 2025
GEN 4.1 - 78	26 DEC 2024	ENR 1.4 - 5	10 JUL 2025	ENR 2.2 - 6	20 MAR 2025
GEN 4.1 - 79	26 DEC 2024	ENR 1.4 - 6	10 JUL 2025	ENR 3.1 - 1	13 JUN 2024
GEN 4.1 - 80	26 DEC 2024	ENR 1.5 - 1	20 FEB 2025	ENR 3.1 - 2	13 JUN 2024
GEN 4.1 - 81	26 DEC 2024	ENR 1.5 - 2	20 FEB 2025	ENR 3.2 - 1	23 JAN 2025
GEN 4.1 - 82	26 DEC 2024	ENR 1.5 - 3	23 APR 2020	ENR 3.2 - 2	23 JAN 2025
GEN 4.1 - 83	15 MAY 2025	ENR 1.5 - 4	23 APR 2020	ENR 3.2 - 3	23 JAN 2025
GEN 4.1 - 84	15 MAY 2025	ENR 1.6 - 1	15 MAY 2025	ENR 3.2 - 4	23 JAN 2025
GEN 4.1 - 85	26 DEC 2024	ENR 1.6 - 2	15 MAY 2025	ENR 3.2 - 5	23 JAN 2025
GEN 4.1 - 86	26 DEC 2024	ENR 1.6 - 3	15 MAY 2025	ENR 3.2 - 6	23 JAN 2025
GEN 4.1 - 87	26 DEC 2024	ENR 1.6 - 4	15 MAY 2025	ENR 3.2 - 7	23 JAN 2025
GEN 4.1 - 88	26 DEC 2024	ENR 1.7 - 1	15 MAY 2025	ENR 3.2 - 8	23 JAN 2025
GEN 4.1 - 89	26 DEC 2024	ENR 1.7 - 2	15 MAY 2025	ENR 3.2 - 9	23 JAN 2025
GEN 4.1 - 90	26 DEC 2024	ENR 1.7 - 3	AIRAC 22 APR 2021	ENR 3.2 - 10	23 JAN 2025
GEN 4.1 - 91	26 DEC 2024	ENR 1.7 - 4	AIRAC 22 APR 2021	ENR 3.2 - 11	23 JAN 2025
GEN 4.1 - 92	26 DEC 2024	ENR 1.7 - 5	15 MAY 2025	ENR 3.2 - 12	23 JAN 2025
GEN 4.1 - 93	10 JUL 2025	ENR 1.7 - 6	15 MAY 2025	ENR 3.2 - 13	23 JAN 2025
GEN 4.1 - 94	10 JUL 2025	ENR 1.8 - 1	08 AUG 2024	ENR 3.2 - 14	23 JAN 2025
GEN 4.2 - 1	20 FEB 2025	ENR 1.8 - 2	08 AUG 2024	ENR 3.2 - 15	23 JAN 2025
GEN 4.2 - 2	20 FEB 2025	ENR 1.9 - 1	AIRAC 22 FEB 2024	ENR 3.2 - 16	23 JAN 2025
GEN 4.2 - 3	30 MAR 2017	ENR 1.9 - 2	AIRAC 22 FEB 2024	ENR 3.2 - 17	AIRAC 04 SEP 2025
GEN 4.2 - 4	30 MAR 2017	ENR 1.9 - 3	10 JUL 2025	ENR 3.2 - 18	AIRAC 04 SEP 2025
GEN 4.2 - 5	30 MAR 2017	ENR 1.9 - 4	10 JUL 2025	ENR 3.2 - 19	AIRAC 04 SEP 2025
GEN 4.2 - 6	30 MAR 2017	ENR 1.10 - 1	AIRAC 20 FEB 2025	ENR 3.2 - 20	AIRAC 04 SEP 2025
GEN 4.2 - 7	30 MAR 2017	ENR 1.10 - 2	AIRAC 20 FEB 2025	ENR 3.2 - 21	AIRAC 04 SEP 2025
GEN 4.2 - 8	30 MAR 2017	ENR 1.10 - 3	21 APR 2022	ENR 3.2 - 22	AIRAC 04 SEP 2025
GEN 4.2 - 9	30 MAR 2017	ENR 1.10 - 4	21 APR 2022	ENR 3.2 - 23	23 JAN 2025
GEN 4.2 - 10	30 MAR 2017	ENR 1.10 - 5	20 MAR 2025	ENR 3.2 - 24	23 JAN 2025
GEN 4.2 - 11	20 FEB 2025	ENR 1.10 - 6	20 MAR 2025	ENR 3.2 - 25	23 JAN 2025
GEN 4.2 - 12	20 FEB 2025	ENR 1.11 - 1	AIRAC 31 OCT 2024	ENR 3.2 - 26	23 JAN 2025
GEN 4.2 - 13	20 FEB 2025	ENR 1.11 - 2	AIRAC 31 OCT 2024	ENR 3.2 - 27	AIRAC 04 SEP 2025
GEN 4.2 - 14	20 FEB 2025	ENR 1.11 - 3	28 MAY 2015	ENR 3.2 - 28	AIRAC 04 SEP 2025
GEN 4.2 - 15	20 FEB 2025	ENR 1.11 - 4	28 MAY 2015	ENR 3.2 - 29	23 JAN 2025
GEN 4.2 - 16	20 FEB 2025	ENR 1.12 - 1	28 MAY 2015	ENR 3.2 - 30	23 JAN 2025

Page	Date	Page	Date	Page	Date
ENR 3.2 - 31	23 JAN 2025	ENR 3.3 - 14	AIRAC 15 MAY 2025	ENR 5.2 - 23	AIRAC 21 MAR 2024
ENR 3.2 - 32	23 JAN 2025	ENR 3.3 - 15	AIRAC 15 MAY 2025	ENR 5.2 - 24	AIRAC 21 MAR 2024
ENR 3.2 - 33	23 JAN 2025	ENR 3.3 - 16	AIRAC 15 MAY 2025	ENR 5.2 - 25	AIRAC 21 MAR 2024
ENR 3.2 - 34	23 JAN 2025	ENR 3.3 - 17	AIRAC 15 MAY 2025	ENR 5.2 - 26	AIRAC 21 MAR 2024
ENR 3.2 - 35	23 JAN 2025	ENR 3.3 - 18	AIRAC 15 MAY 2025	ENR 5.2 - 27	AIRAC 21 MAR 2024
ENR 3.2 - 36	23 JAN 2025	ENR 3.4 - 1	13 JUN 2024	ENR 5.2 - 28	AIRAC 21 MAR 2024
ENR 3.2 - 37	23 JAN 2025	ENR 3.4 - 2	13 JUN 2024	ENR 5.2 - 29	AIRAC 21 MAR 2024
ENR 3.2 - 38	23 JAN 2025	ENR 4.1 - 1	AIRAC 20 MAR 2025	ENR 5.2 - 30	AIRAC 21 MAR 2024
ENR 3.2 - 39	23 JAN 2025	ENR 4.1 - 2	AIRAC 20 MAR 2025	ENR 5.2 - 31	AIRAC 10 JUL 2025
ENR 3.2 - 40	23 JAN 2025	ENR 4.2 - 1	26 JAN 2023	ENR 5.2 - 32	AIRAC 10 JUL 2025
ENR 3.2 - 41	23 JAN 2025	ENR 4.2 - 2	26 JAN 2023	ENR 5.2 - 33	AIRAC 23 MAR 2023
ENR 3.2 - 42	23 JAN 2025	ENR 4.3 - 1	15 JUL 2021	ENR 5.2 - 34	AIRAC 23 MAR 2023
ENR 3.2 - 43	AIRAC 15 MAY 2025	ENR 4.3 - 2	15 JUL 2021	ENR 5.2 - 35	AIRAC 23 MAR 2023
ENR 3.2 - 44	AIRAC 15 MAY 2025	ENR 4.4 - 1	AIRAC 13 JUN 2024	ENR 5.2 - 36	AIRAC 23 MAR 2023
ENR 3.2 - 45	23 JAN 2025	ENR 4.4 - 2	AIRAC 13 JUN 2024	ENR 5.2 - 37	AIRAC 21 MAR 2024
ENR 3.2 - 46	23 JAN 2025	ENR 4.4 - 3	AIRAC 31 OCT 2024	ENR 5.2 - 38	AIRAC 21 MAR 2024
ENR 3.2 - 47	23 JAN 2025	ENR 4.4 - 4	AIRAC 31 OCT 2024	ENR 5.2 - 39	20 MAR 2025
ENR 3.2 - 48	23 JAN 2025	ENR 4.4 - 5	AIRAC 31 OCT 2024	ENR 5.2 - 40	20 MAR 2025
ENR 3.2 - 49	23 JAN 2025	ENR 4.4 - 6	AIRAC 31 OCT 2024	ENR 5.2 - 41	20 MAR 2025
ENR 3.2 - 50	23 JAN 2025	ENR 4.4 - 7	AIRAC 31 OCT 2024	ENR 5.2 - 42	20 MAR 2025
ENR 3.2 - 51	AIRAC 04 SEP 2025	ENR 4.4 - 8	AIRAC 31 OCT 2024	ENR 5.3 - 1	15 MAY 2025
ENR 3.2 - 52	AIRAC 04 SEP 2025	ENR 4.4 - 9	AIRAC 31 OCT 2024	ENR 5.3 - 2	15 MAY 2025
ENR 3.2 - 53	AIRAC 04 SEP 2025	ENR 4.4 - 10	AIRAC 31 OCT 2024	ENR 5.4 - 1	18 APR 2024
ENR 3.2 - 54	AIRAC 04 SEP 2025	ENR 4.4 - 11	AIRAC 31 OCT 2024	ENR 5.4 - 2	18 APR 2024
ENR 3.2 - 55	23 JAN 2025	ENR 4.4 - 12	AIRAC 31 OCT 2024	ENR 5.5 - 1	AIRAC 21 MAR 2024
ENR 3.2 - 56	23 JAN 2025	ENR 4.4 - 13	AIRAC 23 JAN 2025	ENR 5.5 - 2	AIRAC 21 MAR 2024
ENR 3.2 - 57	23 JAN 2025	ENR 4.4 - 14	AIRAC 23 JAN 2025	ENR 5.5 - 3	AIRAC 21 MAR 2024
ENR 3.2 - 58	23 JAN 2025	ENR 4.5 - 1	26 JAN 2023	ENR 5.5 - 4	AIRAC 21 MAR 2024
ENR 3.2 - 59	23 JAN 2025	ENR 4.5 - 2	26 JAN 2023	ENR 5.5 - 5	AIRAC 24 MAR 2022
ENR 3.2 - 60	23 JAN 2025	ENR 5.1 - 1	AIRAC 21 MAR 2024	ENR 5.5 - 6	AIRAC 24 MAR 2022
ENR 3.2 - 61	AIRAC 15 MAY 2025	ENR 5.1 - 2	AIRAC 21 MAR 2024	ENR 5.5 - 7	AIRAC 24 MAR 2022
ENR 3.2 - 62	AIRAC 15 MAY 2025	ENR 5.1 - 3	AIRAC 21 MAR 2024	ENR 5.5 - 8	AIRAC 24 MAR 2022
ENR 3.2 - 63	23 JAN 2025	ENR 5.1 - 4	AIRAC 21 MAR 2024	ENR 5.5 - 9	AIRAC 21 MAR 2024
ENR 3.2 - 64	23 JAN 2025	ENR 5.1 - 5	AIRAC 21 MAR 2024	ENR 5.5 - 10	AIRAC 21 MAR 2024
ENR 3.2 - 65	23 JAN 2025	ENR 5.1 - 6	AIRAC 21 MAR 2024	ENR 5.5 - 11	17 APR 2025
ENR 3.2 - 66	23 JAN 2025	ENR 5.1 - 7	AIRAC 21 MAR 2024	ENR 5.5 - 12	17 APR 2025
ENR 3.2 - 67	23 JAN 2025	ENR 5.1 - 8	AIRAC 21 MAR 2024	ENR 5.5 - 13	AIRAC 20 MAR 2025
ENR 3.2 - 68	23 JAN 2025	ENR 5.1 - 9	16 MAY 2024	ENR 5.5 - 14	AIRAC 20 MAR 2025
ENR 3.2 - 69	23 JAN 2025	ENR 5.1 - 10	16 MAY 2024	ENR 5.5 - 15	AIRAC 20 MAR 2025
ENR 3.2 - 70	23 JAN 2025	ENR 5.1 - 11	AIRAC 21 MAR 2024	ENR 5.5 - 16	AIRAC 20 MAR 2025
ENR 3.2 - 71	AIRAC 04 SEP 2025	ENR 5.1 - 12	AIRAC 21 MAR 2024	ENR 5.5 - 17	17 APR 2025
ENR 3.2 - 72	AIRAC 04 SEP 2025	ENR 5.1 - 13	AIRAC 21 MAR 2024	ENR 5.5 - 18	17 APR 2025
ENR 3.2 - 73	23 JAN 2025	ENR 5.1 - 14	AIRAC 21 MAR 2024	ENR 5.5 - 19	15 MAY 2025
ENR 3.2 - 74	23 JAN 2025	ENR 5.1 - 15	AIRAC 20 MAR 2025	ENR 5.5 - 20	15 MAY 2025
ENR 3.2 - 75	23 JAN 2025	ENR 5.1 - 16	AIRAC 20 MAR 2025	ENR 5.6 - 1	15 OCT 2015
ENR 3.2 - 76	23 JAN 2025	ENR 5.1 - 17	AIRAC 20 MAR 2025	ENR 5.6 - 2	15 OCT 2015
ENR 3.2 - 77	23 JAN 2025	ENR 5.1 - 18	AIRAC 20 MAR 2025	ENR 5.6 - 3	15 MAY 2025
ENR 3.2 - 78	23 JAN 2025	ENR 5.1 - 19	AIRAC 21 MAR 2024	ENR 5.6 - 4	15 MAY 2025
ENR 3.2 - 79	AIRAC 10 JUL 2025	ENR 5.1 - 20	AIRAC 21 MAR 2024	ENR 5.6 - 5	15 MAY 2025
ENR 3.2 - 80	AIRAC 10 JUL 2025	ENR 5.2 - 1	AIRAC 21 MAR 2024	ENR 5.6 - 6	15 MAY 2025
ENR 3.2 - 81	23 JAN 2025	ENR 5.2 - 2	AIRAC 21 MAR 2024	ENR 5.6 - 7	15 MAY 2025
ENR 3.2 - 82	23 JAN 2025	ENR 5.2 - 3	AIRAC 21 MAR 2024	ENR 5.6 - 8	15 MAY 2025
ENR 3.2 - 83	23 JAN 2025	ENR 5.2 - 4	AIRAC 21 MAR 2024	ENR 6 - 1	18 MAY 2023
ENR 3.2 - 84	23 JAN 2025	ENR 5.2 - 5	AIRAC 21 MAR 2024	ENR 6 - 2	18 MAY 2023
ENR 3.2 - 85	AIRAC 15 MAY 2025	ENR 5.2 - 6	AIRAC 21 MAR 2024	ENR 6.1 - 1	12 JUN 2025
ENR 3.2 - 86	AIRAC 15 MAY 2025	ENR 5.2 - 7	AIRAC 21 MAR 2024	ENR 6.1 - 2	12 JUN 2025
ENR 3.2 - 87	23 JAN 2025	ENR 5.2 - 8	AIRAC 21 MAR 2024	ENR 6.3 - 1	AIRAC 20 MAR 2025
ENR 3.2 - 88	23 JAN 2025	ENR 5.2 - 9	AIRAC 21 MAR 2024	ENR 6.3 - 2	AIRAC 20 MAR 2025
ENR 3.3 - 1	AIRAC 15 MAY 2025	ENR 5.2 - 10	AIRAC 21 MAR 2024	ENR 6.4 - 1	AIRAC 20 MAR 2025
ENR 3.3 - 2	AIRAC 15 MAY 2025	ENR 5.2 - 11	AIRAC 21 MAR 2024	ENR 6.4 - 2	AIRAC 20 MAR 2025
ENR 3.3 - 3	AIRAC 15 MAY 2025	ENR 5.2 - 12	AIRAC 21 MAR 2024	ENR 6.5 - 1	20 MAR 2025
ENR 3.3 - 4	AIRAC 15 MAY 2025	ENR 5.2 - 13	AIRAC 21 MAR 2024	ENR 6.5 - 2	20 MAR 2025
ENR 3.3 - 5	AIRAC 15 MAY 2025	ENR 5.2 - 14	AIRAC 21 MAR 2024	ENR 6.7 - 1	20 MAR 2025
ENR 3.3 - 6	AIRAC 15 MAY 2025	ENR 5.2 - 15	AIRAC 21 MAR 2024	ENR 6.7 - 2	20 MAR 2025
ENR 3.3 - 7	AIRAC 15 MAY 2025	ENR 5.2 - 16	AIRAC 21 MAR 2024		
ENR 3.3 - 8	AIRAC 15 MAY 2025	ENR 5.2 - 17	AIRAC 21 MAR 2024		
ENR 3.3 - 9	AIRAC 15 MAY 2025	ENR 5.2 - 18	AIRAC 21 MAR 2024		
ENR 3.3 - 10	AIRAC 15 MAY 2025	ENR 5.2 - 19	AIRAC 21 MAR 2024		
ENR 3.3 - 11	AIRAC 15 MAY 2025	ENR 5.2 - 20	AIRAC 21 MAR 2024		
ENR 3.3 - 12	AIRAC 15 MAY 2025	ENR 5.2 - 21	AIRAC 21 MAR 2024		
ENR 3.3 - 13	AIRAC 15 MAY 2025	ENR 5.2 - 22	AIRAC 21 MAR 2024		

PART 3 - AERODROMES (AD)

AD 0.1 - 1	26 JAN 2023
AD 0.1 - 2	26 JAN 2023
AD 0.2 - 1	26 JAN 2023

Page	Date	Page	Date	Page	Date
AD 0.2 - 2	26 JAN 2023	LSZB AD 2.24.7 - 1	AIRAC 20 FEB 2025	LSGC AD 2.24.9 - 2	23 JAN 2025
AD 0.3 - 1	26 JAN 2023	LSZB AD 2.24.7 - 2	AIRAC 20 FEB 2025	LSGC AD 2.24.9 - 3	23 JAN 2025
AD 0.3 - 2	26 JAN 2023	LSZB AD 2.24.7 - 3	AIRAC 20 FEB 2025	LSGC AD 2.24.9 - 4	23 JAN 2025
AD 0.4 - 1	26 JAN 2023	LSZB AD 2.24.7 - 4	AIRAC 20 FEB 2025	LSGC AD 2.24.10 - 1	20 MAR 2025
AD 0.4 - 2	26 JAN 2023	LSZB AD 2.24.9 - 1	AIRAC 20 FEB 2025	LSGC AD 2.24.10 - 2	20 MAR 2025
AD 0.5 - 1	26 JAN 2023	LSZB AD 2.24.9 - 2	AIRAC 20 FEB 2025	LSGC AD 2.24.10 - 3	23 JAN 2025
AD 0.5 - 2	26 JAN 2023	LSZB AD 2.24.10 - 1	AIRAC 20 FEB 2025	LSGC AD 2.24.10 - 4	23 JAN 2025
AD 0.6 - 1	04 SEP 2025	LSZB AD 2.24.10 - 2	AIRAC 20 FEB 2025	LSGG AD 2 - 1	20 FEB 2025
AD 0.6 - 2	04 SEP 2025	LSZB AD 2.24.10 - 3	AIRAC 20 FEB 2025	LSGG AD 2 - 2	20 FEB 2025
AD 0.6 - 3	04 SEP 2025	LSZB AD 2.24.10 - 4	AIRAC 20 FEB 2025	LSGG AD 2 - 3	07 AUG 2025
AD 0.6 - 4	04 SEP 2025	LSZB AD 2.24.10 - 5	AIRAC 20 FEB 2025	LSGG AD 2 - 4	07 AUG 2025
AD 0.6 - 5	04 SEP 2025	LSZB AD 2.24.10 - 6	AIRAC 20 FEB 2025	LSGG AD 2 - 5	07 AUG 2025
AD 0.6 - 6	04 SEP 2025	LSZB AD 2.24.10 - 7	10 JUL 2025	LSGG AD 2 - 6	07 AUG 2025
AD 0.6 - 7	04 SEP 2025	LSZB AD 2.24.10 - 8	10 JUL 2025	LSGG AD 2 - 7	07 AUG 2025
AD 0.6 - 8	04 SEP 2025	LSZB AD 2.24.10 - 9	10 JUL 2025	LSGG AD 2 - 8	07 AUG 2025
AD 0.6 - 9	04 SEP 2025	LSZB AD 2.24.10 - 10	10 JUL 2025	LSGG AD 2 - 9	07 AUG 2025
AD 0.6 - 10	04 SEP 2025	LSZB AD 2.24.10 - 11	AIRAC 20 FEB 2025	LSGG AD 2 - 10	07 AUG 2025
AD 0.6 - 11	04 SEP 2025	LSZB AD 2.24.10 - 12	AIRAC 20 FEB 2025	LSGG AD 2 - 11	07 AUG 2025
AD 0.6 - 12	04 SEP 2025	LSZB AD 2.24.13 - 1	AIRAC 20 FEB 2025	LSGG AD 2 - 12	07 AUG 2025
AD 0.6 - 13	04 SEP 2025	LSZB AD 2.24.13 - 2	AIRAC 20 FEB 2025	LSGG AD 2 - 13	07 AUG 2025
AD 0.6 - 14	04 SEP 2025	LSZB AD 2.24.13 - 3	20 FEB 2025	LSGG AD 2 - 14	07 AUG 2025
AD 1.1 - 1	19 MAY 2022	LSZB AD 2.24.13 - 4	20 FEB 2025	LSGG AD 2 - 15	07 AUG 2025
AD 1.1 - 2	19 MAY 2022	LSZC AD 2 - 1	20 MAR 2025	LSGG AD 2 - 16	07 AUG 2025
AD 1.1 - 3	28 NOV 2024	LSZC AD 2 - 2	20 MAR 2025	LSGG AD 2 - 17	07 AUG 2025
AD 1.1 - 4	28 NOV 2024	LSZC AD 2 - 3	20 MAR 2025	LSGG AD 2 - 18	07 AUG 2025
AD 1.1 - 5	15 MAY 2025	LSZC AD 2 - 4	20 MAR 2025	LSGG AD 2 - 19	07 AUG 2025
AD 1.1 - 6	15 MAY 2025	LSZC AD 2 - 5	15 MAY 2025	LSGG AD 2 - 20	07 AUG 2025
AD 1.2 - 1	28 DEC 2023	LSZC AD 2 - 6	15 MAY 2025	LSGG AD 2 - 21	07 AUG 2025
AD 1.2 - 2	28 DEC 2023	LSZC AD 2 - 7	15 MAY 2025	LSGG AD 2 - 22	07 AUG 2025
AD 1.2 - 3	19 MAY 2022	LSZC AD 2 - 8	15 MAY 2025	LSGG AD 2 - 23	07 AUG 2025
AD 1.2 - 4	19 MAY 2022	LSZC AD 2 - 9	17 APR 2025	LSGG AD 2 - 24	07 AUG 2025
AD 1.3 - 1	04 SEP 2025	LSZC AD 2 - 10	17 APR 2025	LSGG AD 2 - 25	07 AUG 2025
AD 1.3 - 2	04 SEP 2025	LSZC AD 2.24.1 - 1	15 MAY 2025	LSGG AD 2 - 26	07 AUG 2025
AD 1.3 - 3	04 SEP 2025	LSZC AD 2.24.1 - 2	15 MAY 2025	LSGG AD 2 - 27	07 AUG 2025
AD 1.3 - 4	04 SEP 2025	LSZC AD 2.24.4 - 1	20 MAR 2025	LSGG AD 2 - 28	07 AUG 2025
AD 1.3 - 5	04 SEP 2025	LSZC AD 2.24.4 - 2	20 MAR 2025	LSGG AD 2 - 29	07 AUG 2025
AD 1.3 - 6	04 SEP 2025	LSZC AD 2.24.7 - 1	26 DEC 2024	LSGG AD 2 - 30	07 AUG 2025
AD 1.4 - 1	19 MAY 2022	LSZC AD 2.24.7 - 2	26 DEC 2024	LSGG AD 2 - 31	07 AUG 2025
AD 1.4 - 2	19 MAY 2022	LSZC AD 2.24.9 - 1	26 DEC 2024	LSGG AD 2 - 32	07 AUG 2025
AD 1.5 - 1	19 MAY 2022	LSZC AD 2.24.9 - 2	26 DEC 2024	LSGG AD 2 - 33	07 AUG 2025
AD 1.5 - 2	19 MAY 2022	LSZC AD 2.24.10 - 1	AIRAC 20 MAR 2025	LSGG AD 2 - 34	07 AUG 2025
LSZB AD 2 - 1	12 JUN 2025	LSZC AD 2.24.10 - 2	AIRAC 20 MAR 2025	LSGG AD 2 - 35	07 AUG 2025
LSZB AD 2 - 2	12 JUN 2025	LSZC AD 2.24.10 - 3	04 SEP 2025	LSGG AD 2 - 36	07 AUG 2025
LSZB AD 2 - 3	04 SEP 2025	LSZC AD 2.24.10 - 4	04 SEP 2025	LSGG AD 2 - 37	07 AUG 2025
LSZB AD 2 - 4	04 SEP 2025	LSGC AD 2 - 1	12 JUN 2025	LSGG AD 2 - 38	07 AUG 2025
LSZB AD 2 - 5	17 APR 2025	LSGC AD 2 - 2	12 JUN 2025	LSGG AD 2 - 39	07 AUG 2025
LSZB AD 2 - 6	17 APR 2025	LSGC AD 2 - 3	18 APR 2024	LSGG AD 2 - 40	07 AUG 2025
LSZB AD 2 - 7	17 APR 2025	LSGC AD 2 - 4	18 APR 2024	LSGG AD 2 - 41	07 AUG 2025
LSZB AD 2 - 8	17 APR 2025	LSGC AD 2 - 5	20 MAR 2025	LSGG AD 2 - 42	07 AUG 2025
LSZB AD 2 - 9	AIRAC 08 AUG 2024	LSGC AD 2 - 6	20 MAR 2025	LSGG AD 2 - 43	07 AUG 2025
LSZB AD 2 - 10	AIRAC 08 AUG 2024	LSGC AD 2 - 7	AIRAC 31 OCT 2024	LSGG AD 2 - 44	07 AUG 2025
LSZB AD 2 - 11	AIRAC 08 AUG 2024	LSGC AD 2 - 8	AIRAC 31 OCT 2024	LSGG AD 2 - 45	07 AUG 2025
LSZB AD 2 - 12	AIRAC 08 AUG 2024	LSGC AD 2 - 9	AIRAC 31 OCT 2024	LSGG AD 2 - 46	07 AUG 2025
LSZB AD 2 - 13	09 SEP 2021	LSGC AD 2 - 10	AIRAC 31 OCT 2024	LSGG AD 2 - 47	07 AUG 2025
LSZB AD 2 - 14	09 SEP 2021	LSGC AD 2 - 11	AIRAC 31 OCT 2024	LSGG AD 2 - 48	07 AUG 2025
LSZB AD 2 - 15	AIRAC 31 OCT 2024	LSGC AD 2 - 12	AIRAC 31 OCT 2024	LSGG AD 2 - 49	07 AUG 2025
LSZB AD 2 - 16	AIRAC 31 OCT 2024	LSGC AD 2 - 13	28 DEC 2023	LSGG AD 2 - 50	07 AUG 2025
LSZB AD 2 - 17	AIRAC 31 OCT 2024	LSGC AD 2 - 14	28 DEC 2023	LSGG AD 2 - 51	07 AUG 2025
LSZB AD 2 - 18	AIRAC 31 OCT 2024	LSGC AD 2 - 15	17 APR 2025	LSGG AD 2 - 52	07 AUG 2025
LSZB AD 2 - 19	17 APR 2025	LSGC AD 2 - 16	17 APR 2025	LSGG AD 2.24.1 - 1	AIRAC 07 AUG 2025
LSZB AD 2 - 20	17 APR 2025	LSGC AD 2.24.1 - 1	23 JAN 2025	LSGG AD 2.24.1 - 2	AIRAC 07 AUG 2025
LSZB AD 2.24.1 - 1	17 APR 2025	LSGC AD 2.24.1 - 2	23 JAN 2025	LSGG AD 2.24.2 - 1	AIRAC 07 AUG 2025
LSZB AD 2.24.1 - 2	17 APR 2025	LSGC AD 2.24.2 - 1	23 JAN 2025	LSGG AD 2.24.2 - 2	AIRAC 07 AUG 2025
LSZB AD 2.24.2 - 1	AIRAC 20 FEB 2025	LSGC AD 2.24.2 - 2	23 JAN 2025	LSGG AD 2.24.3 - 1	20 FEB 2025
LSZB AD 2.24.2 - 2	AIRAC 20 FEB 2025	LSGC AD 2.24.4 - 1	23 JAN 2025	LSGG AD 2.24.3 - 2	20 FEB 2025
LSZB AD 2.24.4 - 1	17 APR 2025	LSGC AD 2.24.4 - 2	23 JAN 2025	LSGG AD 2.24.3 - 3	12 JUN 2025
LSZB AD 2.24.4 - 2	17 APR 2025	LSGC AD 2.24.7 - 1	23 JAN 2025	LSGG AD 2.24.3 - 4	12 JUN 2025
LSZB AD 2.24.4 - 3	AIRAC 20 FEB 2025	LSGC AD 2.24.7 - 2	23 JAN 2025	LSGG AD 2.24.4 - 1	20 FEB 2025
LSZB AD 2.24.4 - 4	AIRAC 20 FEB 2025	LSGC AD 2.24.7 - 3	23 JAN 2025	LSGG AD 2.24.4 - 2	20 FEB 2025
LSZB AD 2.24.6 - 1	AIRAC 20 FEB 2025	LSGC AD 2.24.7 - 4	23 JAN 2025	LSGG AD 2.24.4 - 3	20 FEB 2025
LSZB AD 2.24.6 - 2	AIRAC 20 FEB 2025	LSGC AD 2.24.9 - 1	23 JAN 2025	LSGG AD 2.24.4 - 4	20 FEB 2025

Page	Date	Page	Date	Page	Date
LSGG AD 2.24.5 - 1	20 FEB 2025	LSZG AD 2.24.7 - 8	AIRAC 12 JUN 2025	LSMP AD 2.24.7 - 1	23 JAN 2025
LSGG AD 2.24.5 - 2	20 FEB 2025	LSZG AD 2.24.10 - 1	AIRAC 12 JUN 2025	LSMP AD 2.24.7 - 2	23 JAN 2025
LSGG AD 2.24.6 - 1	20 FEB 2025	LSZG AD 2.24.10 - 2	AIRAC 12 JUN 2025	LSMP AD 2.24.9 - 1	23 JAN 2025
LSGG AD 2.24.6 - 2	20 FEB 2025	LSZA AD 2 - 1	12 JUN 2025	LSMP AD 2.24.9 - 2	23 JAN 2025
LSGG AD 2.24.6 - 3	20 FEB 2025	LSZA AD 2 - 2	12 JUN 2025	LSMP AD 2.24.10 - 1	23 JAN 2025
LSGG AD 2.24.6 - 4	20 FEB 2025	LSZA AD 2 - 3	28 NOV 2024	LSMP AD 2.24.10 - 2	23 JAN 2025
LSGG AD 2.24.7 - 1	20 FEB 2025	LSZA AD 2 - 4	28 NOV 2024	LSMP AD 2.24.10 - 3	23 JAN 2025
LSGG AD 2.24.7 - 2	20 FEB 2025	LSZA AD 2 - 5	20 MAR 2025	LSMP AD 2.24.10 - 4	23 JAN 2025
LSGG AD 2.24.7 - 3	20 FEB 2025	LSZA AD 2 - 6	20 MAR 2025	LSMP AD 2.24.10 - 5	23 JAN 2025
LSGG AD 2.24.7 - 4	20 FEB 2025	LSZA AD 2 - 7	20 MAR 2025	LSMP AD 2.24.10 - 6	23 JAN 2025
LSGG AD 2.24.7 - 5	20 FEB 2025	LSZA AD 2 - 8	20 MAR 2025	LSZR AD 2 - 1	07 AUG 2025
LSGG AD 2.24.7 - 6	20 FEB 2025	LSZA AD 2 - 9	15 MAY 2025	LSZR AD 2 - 2	07 AUG 2025
LSGG AD 2.24.7 - 7	20 FEB 2025	LSZA AD 2 - 10	15 MAY 2025	LSZR AD 2 - 3	07 AUG 2025
LSGG AD 2.24.7 - 8	20 FEB 2025	LSZA AD 2 - 11	15 MAY 2025	LSZR AD 2 - 4	07 AUG 2025
LSGG AD 2.24.9 - 1	20 FEB 2025	LSZA AD 2 - 12	15 MAY 2025	LSZR AD 2 - 5	28 NOV 2024
LSGG AD 2.24.9 - 2	20 FEB 2025	LSZA AD 2 - 13	AIRAC 08 AUG 2024	LSZR AD 2 - 6	28 NOV 2024
LSGG AD 2.24.9 - 3	20 FEB 2025	LSZA AD 2 - 14	AIRAC 08 AUG 2024	LSZR AD 2 - 7	20 MAR 2025
LSGG AD 2.24.9 - 4	20 FEB 2025	LSZA AD 2 - 15	12 JUN 2025	LSZR AD 2 - 8	20 MAR 2025
LSGG AD 2.24.9 - 5	20 FEB 2025	LSZA AD 2 - 16	12 JUN 2025	LSZR AD 2 - 9	AIRAC 08 AUG 2024
LSGG AD 2.24.9 - 6	20 FEB 2025	LSZA AD 2 - 17	12 JUN 2025	LSZR AD 2 - 10	AIRAC 08 AUG 2024
LSGG AD 2.24.9 - 7	20 FEB 2025	LSZA AD 2 - 18	12 JUN 2025	LSZR AD 2 - 11	20 MAY 2021
LSGG AD 2.24.9 - 8	20 FEB 2025	LSZA AD 2 - 19	12 JUN 2025	LSZR AD 2 - 12	20 MAY 2021
LSGG AD 2.24.9 - 9	20 FEB 2025	LSZA AD 2 - 20	12 JUN 2025	LSZR AD 2 - 13	20 MAY 2021
LSGG AD 2.24.9 - 10	20 FEB 2025	LSZA AD 2 - 21	17 APR 2025	LSZR AD 2 - 14	20 MAY 2021
LSGG AD 2.24.9 - 11	20 FEB 2025	LSZA AD 2 - 22	17 APR 2025	LSZR AD 2 - 15	20 MAY 2021
LSGG AD 2.24.9 - 12	20 FEB 2025	LSZA AD 2.24.1 - 1	23 JAN 2025	LSZR AD 2 - 16	20 MAY 2021
LSGG AD 2.24.10 - 1	20 FEB 2025	LSZA AD 2.24.1 - 2	23 JAN 2025	LSZR AD 2 - 17	AIRAC 05 OCT 2023
LSGG AD 2.24.10 - 2	20 FEB 2025	LSZA AD 2.24.2 - 1	07 AUG 2025	LSZR AD 2 - 18	AIRAC 05 OCT 2023
LSGG AD 2.24.10 - 3	20 FEB 2025	LSZA AD 2.24.2 - 2	07 AUG 2025	LSZR AD 2 - 19	17 APR 2025
LSGG AD 2.24.10 - 4	20 FEB 2025	LSZA AD 2.24.4 - 1	23 JAN 2025	LSZR AD 2 - 20	17 APR 2025
LSGG AD 2.24.10 - 5	20 FEB 2025	LSZA AD 2.24.4 - 2	23 JAN 2025	LSZR AD 2.24.1 - 1	07 AUG 2025
LSGG AD 2.24.10 - 6	20 FEB 2025	LSZA AD 2.24.4 - 3	23 JAN 2025	LSZR AD 2.24.1 - 2	07 AUG 2025
LSGG AD 2.24.10 - 7	20 FEB 2025	LSZA AD 2.24.4 - 4	23 JAN 2025	LSZR AD 2.24.4 - 1	26 DEC 2024
LSGG AD 2.24.10 - 8	20 FEB 2025	LSZA AD 2.24.7 - 1	23 JAN 2025	LSZR AD 2.24.4 - 2	26 DEC 2024
LSGG AD 2.24.13 - 1	20 FEB 2025	LSZA AD 2.24.7 - 2	23 JAN 2025	LSZR AD 2.24.7 - 1	26 DEC 2024
LSGG AD 2.24.13 - 2	20 FEB 2025	LSZA AD 2.24.7 - 3	23 JAN 2025	LSZR AD 2.24.7 - 2	26 DEC 2024
LSGG AD 2.24.13 - 3	20 FEB 2025	LSZA AD 2.24.7 - 4	23 JAN 2025	LSZR AD 2.24.7 - 3	26 DEC 2024
LSGG AD 2.24.13 - 4	20 FEB 2025	LSZA AD 2.24.7 - 5	23 JAN 2025	LSZR AD 2.24.7 - 4	26 DEC 2024
LSZG AD 2 - 1	AIRAC 12 JUN 2025	LSZA AD 2.24.7 - 6	23 JAN 2025	LSZR AD 2.24.7 - 5	23 JAN 2025
LSZG AD 2 - 2	AIRAC 12 JUN 2025	LSZA AD 2.24.9 - 1	23 JAN 2025	LSZR AD 2.24.7 - 6	23 JAN 2025
LSZG AD 2 - 3	AIRAC 12 JUN 2025	LSZA AD 2.24.9 - 2	23 JAN 2025	LSZR AD 2.24.7 - 7	26 DEC 2024
LSZG AD 2 - 4	AIRAC 12 JUN 2025	LSZA AD 2.24.10 - 1	23 JAN 2025	LSZR AD 2.24.7 - 8	26 DEC 2024
LSZG AD 2 - 5	20 MAR 2025	LSZA AD 2.24.10 - 2	23 JAN 2025	LSZR AD 2.24.7 - 9	26 DEC 2024
LSZG AD 2 - 6	20 MAR 2025	LSZA AD 2.24.10 - 3	23 JAN 2025	LSZR AD 2.24.7 - 10	26 DEC 2024
LSZG AD 2 - 7	12 JUN 2025	LSZA AD 2.24.10 - 4	23 JAN 2025	LSZR AD 2.24.7 - 11	26 DEC 2024
LSZG AD 2 - 8	12 JUN 2025	LSZA AD 2.24.10 - 5	04 SEP 2025	LSZR AD 2.24.7 - 12	26 DEC 2024
LSZG AD 2 - 9	AIRAC 12 JUN 2025	LSZA AD 2.24.10 - 6	04 SEP 2025	LSZR AD 2.24.9 - 1	26 DEC 2024
LSZG AD 2 - 10	AIRAC 12 JUN 2025	LSZA AD 2.24.10 - 7	04 SEP 2025	LSZR AD 2.24.9 - 2	26 DEC 2024
LSZG AD 2 - 11	AIRAC 12 JUN 2025	LSZA AD 2.24.10 - 8	04 SEP 2025	LSZR AD 2.24.9 - 3	26 DEC 2024
LSZG AD 2 - 12	AIRAC 12 JUN 2025	LSMP AD 2 - 1	26 DEC 2024	LSZR AD 2.24.9 - 4	26 DEC 2024
LSZG AD 2 - 13	AIRAC 12 JUN 2025	LSMP AD 2 - 2	26 DEC 2024	LSZR AD 2.24.9 - 5	26 DEC 2024
LSZG AD 2 - 14	AIRAC 12 JUN 2025	LSMP AD 2 - 3	28 NOV 2024	LSZR AD 2.24.9 - 6	26 DEC 2024
LSZG AD 2 - 15	17 APR 2025	LSMP AD 2 - 4	28 NOV 2024	LSZR AD 2.24.10 - 1	23 JAN 2025
LSZG AD 2 - 16	17 APR 2025	LSMP AD 2 - 5	14 JUL 2022	LSZR AD 2.24.10 - 2	23 JAN 2025
LSZG AD 2.24.1 - 1	17 APR 2025	LSMP AD 2 - 6	14 JUL 2022	LSZR AD 2.24.10 - 3	23 JAN 2025
LSZG AD 2.24.1 - 2	17 APR 2025	LSMP AD 2 - 7	20 MAR 2025	LSZR AD 2.24.10 - 4	23 JAN 2025
LSZG AD 2.24.1 - 3	17 APR 2025	LSMP AD 2 - 8	20 MAR 2025	LSZR AD 2.24.10 - 5	23 JAN 2025
LSZG AD 2.24.1 - 4	17 APR 2025	LSMP AD 2 - 9	AIRAC 21 MAR 2024	LSZR AD 2.24.10 - 6	23 JAN 2025
LSZG AD 2.24.2 - 1	17 APR 2025	LSMP AD 2 - 10	AIRAC 21 MAR 2024	LSZR AD 2.24.13 - 1	AIRAC 20 MAR 2025
LSZG AD 2.24.2 - 2	17 APR 2025	LSMP AD 2 - 11	AIRAC 31 OCT 2024	LSZR AD 2.24.13 - 2	AIRAC 20 MAR 2025
LSZG AD 2.24.2 - 3	17 APR 2025	LSMP AD 2 - 12	AIRAC 31 OCT 2024	LSZS AD 2 - 1	05 SEP 2024
LSZG AD 2.24.2 - 4	17 APR 2025	LSMP AD 2 - 13	AIRAC 31 OCT 2024	LSZS AD 2 - 2	05 SEP 2024
LSZG AD 2.24.4 - 1	AIRAC 12 JUN 2025	LSMP AD 2 - 14	AIRAC 31 OCT 2024	LSZS AD 2 - 3	28 NOV 2024
LSZG AD 2.24.4 - 2	AIRAC 12 JUN 2025	LSMP AD 2 - 15	17 APR 2025	LSZS AD 2 - 4	28 NOV 2024
LSZG AD 2.24.7 - 1	AIRAC 12 JUN 2025	LSMP AD 2 - 16	17 APR 2025	LSZS AD 2 - 5	20 MAR 2025
LSZG AD 2.24.7 - 2	AIRAC 12 JUN 2025	LSMP AD 2.24.1 - 1	23 JAN 2025	LSZS AD 2 - 6	20 MAR 2025
LSZG AD 2.24.7 - 3	AIRAC 12 JUN 2025	LSMP AD 2.24.1 - 2	23 JAN 2025	LSZS AD 2 - 7	05 SEP 2024
LSZG AD 2.24.7 - 4	AIRAC 12 JUN 2025	LSMP AD 2.24.4 - 1	23 JAN 2025	LSZS AD 2 - 8	05 SEP 2024
LSZG AD 2.24.7 - 5	AIRAC 12 JUN 2025	LSMP AD 2.24.4 - 2	23 JAN 2025	LSZS AD 2 - 9	AIRAC 23 JAN 2025
LSZG AD 2.24.7 - 6	AIRAC 12 JUN 2025	LSMP AD 2.24.4 - 3	23 JAN 2025	LSZS AD 2 - 10	AIRAC 23 JAN 2025
LSZG AD 2.24.7 - 7	AIRAC 12 JUN 2025	LSMP AD 2.24.4 - 4	23 JAN 2025	LSZS AD 2 - 11	28 DEC 2023

Page	Date	Page	Date	Page	Date
LSZH AD 2.24.7.5 - 7	AIRAC 12 JUN 2025				
LSZH AD 2.24.7.5 - 8	AIRAC 12 JUN 2025				
LSZH AD 2.24.7.5 - 9	AIRAC 12 JUN 2025				
LSZH AD 2.24.7.5 - 10	AIRAC 12 JUN 2025				
LSZH AD 2.24.7.6 - 1	AIRAC 20 MAR 2025				
LSZH AD 2.24.7.6 - 2	AIRAC 20 MAR 2025				
LSZH AD 2.24.9.1 - 1	AIRAC 20 MAR 2025				
LSZH AD 2.24.9.1 - 2	AIRAC 20 MAR 2025				
LSZH AD 2.24.9.2 - 1	AIRAC 20 MAR 2025				
LSZH AD 2.24.9.2 - 2	AIRAC 20 MAR 2025				
LSZH AD 2.24.9.3 - 1	AIRAC 20 MAR 2025				
LSZH AD 2.24.9.3 - 2	AIRAC 20 MAR 2025				
LSZH AD 2.24.10.1 - 1	AIRAC 20 MAR 2025				
LSZH AD 2.24.10.1 - 2	AIRAC 20 MAR 2025				
LSZH AD 2.24.10.1 - 3	AIRAC 20 MAR 2025				
LSZH AD 2.24.10.1 - 4	AIRAC 20 MAR 2025				
LSZH AD 2.24.10.1 - 5	AIRAC 20 MAR 2025				
LSZH AD 2.24.10.1 - 6	AIRAC 20 MAR 2025				
LSZH AD 2.24.10.1 - 7	AIRAC 20 MAR 2025				
LSZH AD 2.24.10.1 - 8	AIRAC 20 MAR 2025				
LSZH AD 2.24.10.1 - 9	AIRAC 20 MAR 2025				
LSZH AD 2.24.10.1 - 10	AIRAC 20 MAR 2025				
LSZH AD 2.24.10.2 - 1	AIRAC 20 MAR 2025				
LSZH AD 2.24.10.2 - 2	AIRAC 20 MAR 2025				
LSZH AD 2.24.10.2 - 3	AIRAC 20 MAR 2025				
LSZH AD 2.24.10.2 - 4	AIRAC 20 MAR 2025				
LSZH AD 2.24.10.2 - 5	AIRAC 20 MAR 2025				
LSZH AD 2.24.10.2 - 6	AIRAC 20 MAR 2025				
LSZH AD 2.24.10.3 - 1	AIRAC 20 MAR 2025				
LSZH AD 2.24.10.3 - 2	AIRAC 20 MAR 2025				
LSZH AD 2.24.10.3 - 3	AIRAC 20 MAR 2025				
LSZH AD 2.24.10.3 - 4	AIRAC 20 MAR 2025				
LSZH AD 2.24.10.3 - 5	AIRAC 20 MAR 2025				
LSZH AD 2.24.10.3 - 6	AIRAC 20 MAR 2025				
LSZH AD 2.24.10.3 - 7	AIRAC 20 MAR 2025				
LSZH AD 2.24.10.3 - 8	AIRAC 20 MAR 2025				
LSZH AD 2.24.10.4 - 1	AIRAC 20 MAR 2025				
LSZH AD 2.24.10.4 - 2	AIRAC 20 MAR 2025				
LSZH AD 2.24.10.4 - 3	AIRAC 20 MAR 2025				
LSZH AD 2.24.10.4 - 4	AIRAC 20 MAR 2025				
LSZH AD 2.24.10.4 - 5	AIRAC 20 MAR 2025				
LSZH AD 2.24.10.4 - 6	AIRAC 20 MAR 2025				
LSZH AD 2.24.10.4 - 7	AIRAC 20 MAR 2025				
LSZH AD 2.24.10.4 - 8	AIRAC 20 MAR 2025				
LSZH AD 2.24.13 - 1	AIRAC 20 MAR 2025				
LSZH AD 2.24.13 - 2	AIRAC 20 MAR 2025				

THIS PAGE INTENTIONALLY LEFT BLANK

AD 0.6 TABLE OF CONTENT TO PART 3**AD 0 PART 3 Aerodrome (AD)**

AD 0.1	PREFACE	AD 0.1 - 1
AD 0.2	RECORD OF AIP AMENDMENTS	AD 0.2 - 1
AD 0.3	RECORD OF AIP SUPPLEMENTS	AD 0.3 - 1
AD 0.4	CHECKLIST OF AIP PAGES	AD 0.4 - 1
AD 0.5	LIST OF HAND AMENDMENTS TO THE AIP	AD 0.5 - 1
AD 0.6	TABLE OF CONTENT TO PART 3	AD 0.6 - 1

AD 1 AERODROMES/HELIPORTS - INTRODUCTION

AD 1.1	AERODROME/HELIPORT AVAILABILITY AND CONDITIONS OF USE	AD 1.1 - 1
	1. General conditions	AD 1.1 - 1
	2. Use of military air bases	AD 1.1 - 1
	3. Low visibility procedures (LVP)	AD 1.1 - 1
	4. Aerodrome operating minima	AD 1.1 - 3
	5. Other information	AD 1.1 - 3
AD 1.2	RESCUE AND FIRE FIGHTING SERVICES (RFFSs) AND SNOW PLAN	AD 1.2 - 1
	1. Rescue and fire fighting services	AD 1.2 - 1
	2. Snow plan	AD 1.2 - 1
AD 1.3	INDEX OF AERODROMES AND HELIPORTS	AD 1.3 - 1
AD 1.4	GROUPING OF AERODROMES AND HELIPORTS	AD 1.4 - 1
AD 1.5	STATUS OF CERTIFICATION OF AERODROMES	AD 1.5 - 1

AD 2 AERODROMES

	LSZB - BERN - BELP	LSZB AD 2 - 1
LSZB AD 2.1	AERODROME LOCATION INDICATOR AND NAME	LSZB AD 2 - 1
LSZB AD 2.2	AERODROME GEOGRAPHICAL AND ADMINISTRATIVE DATA	LSZB AD 2 - 1
LSZB AD 2.3	OPERATIONAL HOURS	LSZB AD 2 - 1
LSZB AD 2.4	HANDLING SERVICES AND FACILITIES	LSZB AD 2 - 2
LSZB AD 2.5	PASSENGER FACILITIES	LSZB AD 2 - 3
LSZB AD 2.6	RESCUE AND FIRE FIGHTING SERVICES	LSZB AD 2 - 3
LSZB AD 2.7	SEASONAL AVAILABILITY - CLEARING	LSZB AD 2 - 3
LSZB AD 2.8	APRONS, TAXIWAYS AND CHECK LOCATIONS/POSITIONS DATA	LSZB AD 2 - 4
LSZB AD 2.9	SURFACE MOVEMENT GUIDANCE, CONTROL SYSTEM AND MARKINGS	LSZB AD 2 - 4

LSZB AD 2.10 AERODROME OBSTACLES	LSZB AD 2 - 5
LSZB AD 2.11 METEOROLOGICAL INFORMATION PROVIDED	LSZB AD 2 - 7
LSZB AD 2.12 RUNWAY PHYSICAL CHARACTERISTICS	LSZB AD 2 - 7
LSZB AD 2.13 DECLARED DISTANCES	LSZB AD 2 - 8
LSZB AD 2.14 APPROACH AND RUNWAY LIGHTING	LSZB AD 2 - 8
LSZB AD 2.15 OTHER LIGHTING, SECONDARY POWER SUPPLY	LSZB AD 2 - 8
LSZB AD 2.16 HELICOPTER LANDING AREA	LSZB AD 2 - 9
LSZB AD 2.17 ATS AIRSPACE	LSZB AD 2 - 9
LSZB AD 2.18 ATS COMMUNICATION FACILITIES	LSZB AD 2 - 9
LSZB AD 2.19 RADIO NAVIGATION AND LANDING AIDS	LSZB AD 2 - 10
LSZB AD 2.20 LOCAL AERODROME REGULATIONS	LSZB AD 2 - 11
1. Local flying restrictions and remarks	LSZB AD 2 - 11
2. Procedure for non based HEL	LSZB AD 2 - 11
3. Procedure for departure	LSZB AD 2 - 11
4. ACFT guidance on apron	LSZB AD 2 - 11
5. High-visibility jacket	LSZB AD 2 - 11
6. Fuelling	LSZB AD 2 - 11
7. De-icing	LSZB AD 2 - 11
LSZB AD 2.21 NOISE ABATEMENT PROCEDURES	LSZB AD 2 - 12
1. Measures for ACFT noise abatement	LSZB AD 2 - 12
2. Prescriptions and procedures	LSZB AD 2 - 12
LSZB AD 2.22 FLIGHT PROCEDURES	LSZB AD 2 - 13
1. Special regulations for Control Zone (CTR) and Terminal Control Area (TMA)	LSZB AD 2 - 13
2. Minima for IFR departures (TKOF minima)	LSZB AD 2 - 17
LSZB AD 2.23 ADDITIONAL INFORMATION	LSZB AD 2 - 18
1. List of significant points (Terminal)	LSZB AD 2 - 18
2. ILS 14 approach versus JAR-OPS 1	LSZB AD 2 - 18
LSZB AD 2.24 AERONAUTICAL CHARTS RELATED TO AN AERODROME	LSZB AD 2 - 19
LSZB AD 2.25 VISUAL SEGMENT SURFACE (VSS) PENETRATION	LSZB AD 2 - 19
LSZC - BUOCHS	LSZC AD 2 - 1
LSZC AD 2.1 AERODROME LOCATION INDICATOR AND NAME	LSZC AD 2 - 1
LSZC AD 2.2 AERODROME GEOGRAPHICAL AND ADMINISTRATIVE DATA	LSZC AD 2 - 1
LSZC AD 2.3 OPERATIONAL HOURS	LSZC AD 2 - 1
LSZC AD 2.4 HANDLING SERVICES AND FACILITIES	LSZC AD 2 - 1
LSZC AD 2.5 PASSENGER FACILITIES	LSZC AD 2 - 2
LSZC AD 2.6 RESCUE AND FIRE FIGHTING SERVICES	LSZC AD 2 - 2

LSZC AD 2.7 SEASONAL AVAILABILITY - CLEARING	LSZC AD 2 - 2
LSZC AD 2.8 APRONS, TAXIWAYS AND CHECK LOCATIONS/POSITIONS DATA	LSZC AD 2 - 2
LSZC AD 2.9 SURFACE MOVEMENT GUIDANCE AND CONTROL SYSTEM, MARKINGS	LSZC AD 2 - 3
LSZC AD 2.10 AERODROME OBSTACLES	LSZC AD 2 - 3
LSZC AD 2.11 METEOROLOGICAL INFORMATION PROVIDED	LSZC AD 2 - 4
LSZC AD 2.12 RUNWAY PHYSICAL CHARACTERISTICS	LSZC AD 2 - 4
LSZC AD 2.13 DECLARED DISTANCES	LSZC AD 2 - 4
LSZC AD 2.14 APPROACH AND RUNWAY LIGHTING	LSZC AD 2 - 5
LSZC AD 2.15 OTHER LIGHTING, SECONDARY POWER SUPPLY	LSZC AD 2 - 5
LSZC AD 2.16 HELICOPTER LANDING AREA	LSZC AD 2 - 5
LSZC AD 2.17 ATS AIRSPACE	LSZC AD 2 - 5
LSZC AD 2.18 ATS COMMUNICATION FACILITIES	LSZC AD 2 - 6
LSZC AD 2.19 RADIO NAVIGATION AND LANDING AIDS	LSZC AD 2 - 6
LSZC AD 2.20 LOCAL AERODROME REGULATIONS	LSZC AD 2 - 6
1. Customs	LSZC AD 2 - 6
2. Local flying restrictions	LSZC AD 2 - 6
3. ACFT guidance on apron	LSZC AD 2 - 7
4. Departure	LSZC AD 2 - 7
5. High-visibility jacket	LSZC AD 2 - 7
6. Traffic light to H10	LSZC AD 2 - 7
7. Barrier remote control RWY 06/24 (middle of the RWY) outside TWR OPR HR	LSZC AD 2 - 7
8. Traffic light to Pilatus Aircraft Ltd	LSZC AD 2 - 7
LSZC AD 2.21 NOISE ABATEMENT PROCEDURES	LSZC AD 2 - 8
1. Auxiliary Power Unit (APU)	LSZC AD 2 - 8
LSZC AD 2.22 FLIGHT PROCEDURES	LSZC AD 2 - 8
1. Special regulations for IFR approach and departure	LSZC AD 2 - 8
2. Minima for IFR departures (TKOF minima)	LSZC AD 2 - 9
LSZC AD 2.23 ADDITIONAL INFORMATION	LSZC AD 2 - 10
1. List of significant points (Terminal)	LSZC AD 2 - 10
2. Bird concentrations in the vicinity of the airport	LSZC AD 2 - 10
LSZC AD 2.24 AERONAUTICAL CHARTS RELATED TO AN AERODROME	LSZC AD 2 - 10
LSZC AD 2.25 VISUAL SEGMENT SURFACE (VSS) PENETRATION	LSZC AD 2 - 10
LSGC - LES ÉPLATURES	LSGC AD 2 - 1
LSGC AD 2.1 AERODROME LOCATION INDICATOR AND NAME	LSGC AD 2 - 1
LSGC AD 2.2 AERODROME GEOGRAPHICAL AND ADMINISTRATIVE DATA	LSGC AD 2 - 1
LSGC AD 2.3 OPERATIONAL HOURS	LSGC AD 2 - 1

LSGC AD 2.4 HANDLING SERVICES AND FACILITIES	LSGC AD 2 - 1
LSGC AD 2.5 PASSENGER FACILITIES	LSGC AD 2 - 2
LSGC AD 2.6 RESCUE AND FIRE FIGHTING SERVICES	LSGC AD 2 - 2
LSGC AD 2.7 SEASONAL AVAILABILITY - CLEARING	LSGC AD 2 - 2
LSGC AD 2.8 APRONS, TAXIWAYS AND CHECK LOCATIONS/POSITIONS DATA	LSGC AD 2 - 2
LSGC AD 2.9 SURFACE MOVEMENT GUIDANCE, CONTROL SYSTEM AND MARKINGS	LSGC AD 2 - 3
LSGC AD 2.10 AERODROME OBSTACLES	LSGC AD 2 - 3
LSGC AD 2.11 METEOROLOGICAL INFORMATION PROVIDED	LSGC AD 2 - 4
LSGC AD 2.12 RUNWAY PHYSICAL CHARACTERISTICS	LSGC AD 2 - 5
LSGC AD 2.13 DECLARED DISTANCES	LSGC AD 2 - 5
LSGC AD 2.14 APPROACH AND RUNWAY LIGHTING	LSGC AD 2 - 6
LSGC AD 2.15 OTHER LIGHTING, SECONDARY POWER SUPPLY	LSGC AD 2 - 6
LSGC AD 2.16 HELICOPTER LANDING AREA	LSGC AD 2 - 6
LSGC AD 2.17 ATS AIRSPACE	LSGC AD 2 - 6
LSGC AD 2.18 ATS COMMUNICATION FACILITIES	LSGC AD 2 - 7
LSGC AD 2.19 RADIO NAVIGATION AND LANDING AIDS	LSGC AD 2 - 7
LSGC AD 2.20 LOCAL AERODROME REGULATIONS	LSGC AD 2 - 7
1. Airport regulations	LSGC AD 2 - 7
2. ACFT taxi and parking	LSGC AD 2 - 7
3. Summer times	LSGC AD 2 - 7
4. Winter times	LSGC AD 2 - 7
5. School and training flights - technical test flights - use of runways	LSGC AD 2 - 7
6. HEL IFR APCH and DEP	LSGC AD 2 - 7
LSGC AD 2.21 NOISE ABATEMENT PROCEDURES	LSGC AD 2 - 7
1. General provisions	LSGC AD 2 - 7
2. Use of the runway system during the day period	LSGC AD 2 - 7
LSGC AD 2.22 FLIGHT PROCEDURES	LSGC AD 2 - 8
1. Minima for IFR departures (TKOF minima)	LSGC AD 2 - 8
2. STAR Descriptions	LSGC AD 2 - 11
LSGC AD 2.23 ADDITIONAL INFORMATION	LSGC AD 2 - 15
1. List of significant points (Terminal)	LSGC AD 2 - 15
LSGC AD 2.24 AERONAUTICAL CHARTS RELATED TO AN AERODROME	LSGC AD 2 - 15
LSGC AD 2.25 VISUAL SEGMENT SURFACE (VSS) PENETRATION	LSGC AD 2 - 15

LSGG - GENÈVE	LSGG AD 2 - 1
LSGG AD 2.1 AERODROME LOCATION INDICATOR AND NAME	LSGG AD 2 - 1
LSGG AD 2.2 AERODROME GEOGRAPHICAL AND ADMINISTRATIVE DATA	LSGG AD 2 - 1
LSGG AD 2.3 OPERATIONAL HOURS	LSGG AD 2 - 1
LSGG AD 2.4 HANDLING SERVICES AND FACILITIES	LSGG AD 2 - 2
LSGG AD 2.5 PASSENGER FACILITIES	LSGG AD 2 - 2
LSGG AD 2.6 RESCUE AND FIRE FIGHTING SERVICES	LSGG AD 2 - 2
LSGG AD 2.7 SEASONAL AVAILABILITY - CLEARING	LSGG AD 2 - 2
LSGG AD 2.8 APRONS, TAXIWAYS AND CHECK LOCATIONS/POSITIONS DATA	LSGG AD 2 - 3
LSGG AD 2.9 SURFACE MOVEMENT GUIDANCE AND CONTROL SYSTEM, MARKINGS	LSGG AD 2 - 6
LSGG AD 2.10 AERODROME OBSTACLES	LSGG AD 2 - 7
LSGG AD 2.11 METEOROLOGICAL INFORMATION PROVIDED	LSGG AD 2 - 9
LSGG AD 2.12 RUNWAY PHYSICAL CHARACTERISTICS	LSGG AD 2 - 10
LSGG AD 2.13 DECLARED DISTANCES	LSGG AD 2 - 10
LSGG AD 2.14 APPROACH AND RUNWAY LIGHTING	LSGG AD 2 - 11
LSGG AD 2.15 OTHER LIGHTING, SECONDARY POWER SUPPLY	LSGG AD 2 - 11
LSGG AD 2.16 HELICOPTER LANDING AREA	LSGG AD 2 - 12
LSGG AD 2.17 ATS AIRSPACE	LSGG AD 2 - 12
LSGG AD 2.18 ATS COMMUNICATION FACILITIES	LSGG AD 2 - 13
LSGG AD 2.19 RADIO NAVIGATION AND LANDING AIDS	LSGG AD 2 - 14
LSGG AD 2.20 LOCAL AERODROME REGULATIONS	LSGG AD 2 - 16
1. Local flying restrictions and remarks	LSGG AD 2 - 16
2. Night ban regulations	LSGG AD 2 - 17
3. Reporting of parking position at departure	LSGG AD 2 - 18
4. Ground handling agents	LSGG AD 2 - 19
5. Safety and Security	LSGG AD 2 - 20
6. Airport shuttle	LSGG AD 2 - 20
7. Parking	LSGG AD 2 - 20
8. ACFT guidance on apron	LSGG AD 2 - 21
9. Run-up	LSGG AD 2 - 24
10. Fuelling with passengers on board	LSGG AD 2 - 24
11. Code letter F aircraft	LSGG AD 2 - 24
LSGG AD 2.21 NOISE ABATEMENT PROCEDURES	LSGG AD 2 - 25
1. General	LSGG AD 2 - 25
2. Arrival	LSGG AD 2 - 25
3. Departure	LSGG AD 2 - 25
4. Visual circuit	LSGG AD 2 - 25
5. Auxiliary Power Unit (APU) and Brake Fan	LSGG AD 2 - 26

LSGG AD 2.22 FLIGHT PROCEDURES	LSGG AD 2 - 27
1. Special regulations for GENEVA TMA/CTR	LSGG AD 2 - 27
2. VFR procedures (Including non-radio ACFT)	LSGG AD 2 - 48
3. Minima for IFR departures (TKOF minima)	LSGG AD 2 - 48
LSGG AD 2.23 ADDITIONAL INFORMATION	LSGG AD 2 - 49
1. List of significant points (Terminal)	LSGG AD 2 - 49
2. Advanced Surface Movement Guidance and Control System A-SMGCS	LSGG AD 2 - 51
3. Bird Hazard and Wildlife Management Services	LSGG AD 2 - 51
LSGG AD 2.24 AERONAUTICAL CHARTS RELATED TO AN AERODROME	LSGG AD 2 - 52
LSGG AD 2.25 VISUAL SEGMENT SURFACE (VSS) PENETRATION	LSGG AD 2 - 52
LSZG - GRENCHEM	LSZG AD 2 - 1
LSZG AD 2.1 AERODROME LOCATION INDICATOR AND NAME	LSZG AD 2 - 1
LSZG AD 2.2 AERODROME GEOGRAPHICAL AND ADMINISTRATIVE DATA	LSZG AD 2 - 1
LSZG AD 2.3 OPERATIONAL HOURS	LSZG AD 2 - 1
LSZG AD 2.4 HANDLING SERVICES AND FACILITIES	LSZG AD 2 - 2
LSZG AD 2.5 PASSENGER FACILITIES	LSZG AD 2 - 2
LSZG AD 2.6 RESCUE AND FIRE FIGHTING SERVICES	LSZG AD 2 - 2
LSZG AD 2.7 SEASONAL AVAILABILITY - CLEARING	LSZG AD 2 - 2
LSZG AD 2.8 APRONS, TAXIWAYS AND CHECK LOCATIONS/POSITIONS DATA	LSZG AD 2 - 2
LSZG AD 2.9 SURFACE MOVEMENT GUIDANCE AND CONTROL SYSTEM, MARKINGS	LSZG AD 2 - 3
LSZG AD 2.10 AERODROME OBSTACLES	LSZG AD 2 - 3
LSZG AD 2.11 METEOROLOGICAL INFORMATION PROVIDED	LSZG AD 2 - 4
LSZG AD 2.12 RUNWAY PHYSICAL CHARACTERISTICS	LSZG AD 2 - 4
LSZG AD 2.13 DECLARED DISTANCES	LSZG AD 2 - 5
LSZG AD 2.14 APPROACH AND RUNWAY LIGHTING	LSZG AD 2 - 5
LSZG AD 2.15 OTHER LIGHTING, SECONDARY POWER SUPPLY	LSZG AD 2 - 5
LSZG AD 2.16 HELICOPTER LANDING AREA	LSZG AD 2 - 6
LSZG AD 2.17 ATS AIRSPACE	LSZG AD 2 - 6
LSZG AD 2.18 ATS COMMUNICATION FACILITIES	LSZG AD 2 - 7
LSZG AD 2.19 RADIO NAVIGATION AND LANDING AIDS	LSZG AD 2 - 7

LSZG AD 2.20 LOCAL AERODROME REGULATIONS	LSZG AD 2 - 7
1. Local flying restrictions	LSZG AD 2 - 7
2. Procedures applicable in the Control Zone	LSZG AD 2 - 8
3. Procedure applicable in the Radio Mandatory Zone	LSZG AD 2 - 8
4. Runway lighting and visual approach slope indicator for ASPH RWY 06/24	LSZG AD 2 - 9
5. High-visibility jacket	LSZG AD 2 - 9
LSZG AD 2.21 NOISE ABATEMENT PROCEDURES	LSZG AD 2 - 9
LSZG AD 2.22 FLIGHT PROCEDURES	LSZG AD 2 - 10
1. SID Description	LSZG AD 2 - 10
2. Minima for IFR departures (TKOF minima)	LSZG AD 2 - 14
LSZG AD 2.23 ADDITIONAL INFORMATION	LSZG AD 2 - 15
1. List of significant points (Terminal)	LSZG AD 2 - 15
LSZG AD 2.24 AERONAUTICAL CHARTS RELATED TO AN AERODROME	LSZG AD 2 - 15
LSZG AD 2.25 VISUAL SEGMENT SURFACE (VSS) PENETRATION	LSZG AD 2 - 15
LSZA - LUGANO	LSZA AD 2 - 1
LSZA AD 2.1 AERODROME LOCATION INDICATOR AND NAME	LSZA AD 2 - 1
LSZA AD 2.2 AERODROME GEOGRAPHICAL AND ADMINISTRATIVE DATA	LSZA AD 2 - 1
LSZA AD 2.3 OPERATIONAL HOURS	LSZA AD 2 - 1
LSZA AD 2.4 HANDLING SERVICES AND FACILITIES	LSZA AD 2 - 2
LSZA AD 2.5 PASSENGER FACILITIES	LSZA AD 2 - 2
LSZA AD 2.6 RESCUE AND FIRE FIGHTING SERVICES	LSZA AD 2 - 2
LSZA AD 2.7 SEASONAL AVAILABILITY - CLEARING	LSZA AD 2 - 3
LSZA AD 2.8 APRONS, TAXIWAYS AND CHECK LOCATIONS/POSITIONS DATA	LSZA AD 2 - 3
LSZA AD 2.9 SURFACE MOVEMENT GUIDANCE AND CONTROL SYSTEM, MARKINGS	LSZA AD 2 - 3
LSZA AD 2.10 AERODROME OBSTACLES	LSZA AD 2 - 4
LSZA AD 2.11 METEOROLOGICAL INFORMATION PROVIDED	LSZA AD 2 - 6
LSZA AD 2.12 RUNWAY PHYSICAL CHARACTERISTICS	LSZA AD 2 - 6
LSZA AD 2.13 DECLARED DISTANCES	LSZA AD 2 - 6
LSZA AD 2.14 APPROACH AND RUNWAY LIGHTING	LSZA AD 2 - 7
LSZA AD 2.15 OTHER LIGHTING, SECONDARY POWER SUPPLY	LSZA AD 2 - 7
LSZA AD 2.16 HELICOPTER LANDING AREA	LSZA AD 2 - 7
LSZA AD 2.17 ATS AIRSPACE	LSZA AD 2 - 8
LSZA AD 2.18 ATS COMMUNICATION FACILITIES	LSZA AD 2 - 8

LSZA AD 2.19 RADIO NAVIGATION AND LANDING AIDS	LSZA AD 2 - 9
LSZA AD 2.20 LOCAL AERODROME REGULATIONS	LSZA AD 2 - 10
1. Local flying restrictions and remarks	LSZA AD 2 - 10
2. Procedure for Deaparure	LSZA AD 2 - 10
3. De-icing	LSZA AD 2 - 10
LSZA AD 2.21 NOISE ABATEMENT PROCEDURES	LSZA AD 2 - 11
1. General	LSZA AD 2 - 11
2. Aircraft not admitted without a special authorisation	LSZA AD 2 - 11
3. Circling procedure RWY 19	LSZA AD 2 - 11
4. Reverse thrust	LSZA AD 2 - 11
5. Taxi and holding	LSZA AD 2 - 11
6. Auxiliary Power Units (APU)	LSZA AD 2 - 11
7. Instruction and qualification for IFR flights	LSZA AD 2 - 11
8. Engine tests	LSZA AD 2 - 11
LSZA AD 2.22 FLIGHT PROCEDURES	LSZA AD 2 - 12
1. Special regulations for IFR approach and departure	LSZA AD 2 - 12
LSZA AD 2.23 ADDITIONAL INFORMATION	LSZA AD 2 - 20
1. List of significant points	LSZA AD 2 - 20
LSZA AD 2.24 AERONAUTICAL CHARTS RELATED TO AN AERODROME	LSZA AD 2 - 21
LSZA AD 2.25 VISUAL SEGMENT SURFACE (VSS) PENETRATION	LSZA AD 2 - 21
LSMP - PAYERNE	LSMP AD 2 - 1
LSMP AD 2.1 AERODROME LOCATION INDICATOR AND NAME	LSMP AD 2 - 1
LSMP AD 2.2 AERODROME GEOGRAPHICAL AND ADMINISTRATIVE DATA	LSMP AD 2 - 1
LSMP AD 2.3 OPERATIONAL HOURS	LSMP AD 2 - 1
LSMP AD 2.4 HANDLING SERVICES AND FACILITIES	LSMP AD 2 - 2
LSMP AD 2.5 PASSENGER FACILITIES	LSMP AD 2 - 2
LSMP AD 2.6 RESCUE AND FIRE FIGHTING SERVICES	LSMP AD 2 - 3
LSMP AD 2.7 SEASONAL AVAILABILITY - CLEARING	LSMP AD 2 - 3
LSMP AD 2.8 APRONS, TAXIWAYS AND CHECK LOCATIONS/POSITIONS DATA	LSMP AD 2 - 3
LSMP AD 2.9 SURFACE MOVEMENT GUIDANCE, CONTROL SYSTEM AND MARKINGS	LSMP AD 2 - 3
LSMP AD 2.10 AERODROME OBSTACLES	LSMP AD 2 - 4
LSMP AD 2.11 METEOROLOGICAL INFORMATION PROVIDED	LSMP AD 2 - 6
LSMP AD 2.12 RUNWAY PHYSICAL CHARACTERISTICS	LSMP AD 2 - 7
LSMP AD 2.13 DECLARED DISTANCES	LSMP AD 2 - 7
LSMP AD 2.14 APPROACH AND RUNWAY LIGHTING	LSMP AD 2 - 8
LSMP AD 2.15 OTHER LIGHTING, SECONDARY POWER SUPPLY	LSMP AD 2 - 8

LSMP AD 2.16 HELICOPTER LANDING AREA	LSMP AD 2 - 8
LSMP AD 2.17 ATS AIRSPACE	LSMP AD 2 - 8
LSMP AD 2.18 ATS COMMUNICATION FACILITIES	LSMP AD 2 - 9
LSMP AD 2.19 RADIO NAVIGATION AND LANDING AIDS	LSMP AD 2 - 9
LSMP AD 2.20 LOCAL AERODROME REGULATIONS	LSMP AD 2 - 10
1. Local flying and operational restrictions	LSMP AD 2 - 10
2. Mixed CIV-MIL environment	LSMP AD 2 - 10
3. MIL equipment and restricted area	LSMP AD 2 - 10
4. Other characteristics and requirements	LSMP AD 2 - 10
LSMP AD 2.21 NOISE ABATEMENT PROCEDURES	LSMP AD 2 - 11
LSMP AD 2.22 FLIGHT PROCEDURES	LSMP AD 2 - 12
1. Minima for IFR departures (TKOF minima)	LSMP AD 2 - 12
LSMP AD 2.23 ADDITIONAL INFORMATION	LSMP AD 2 - 15
1. List of significant points (Terminal)	LSMP AD 2 - 15
LSMP AD 2.24 AERONAUTICAL CHARTS RELATED TO AN AERODROME	LSMP AD 2 - 15
LSMP AD 2.25 VISUAL SEGMENT SURFACE (VSS) PENETRATION	LSMP AD 2 - 15
LSZR - ST. GALLEN-ALTENRHEIN	
LSZR AD 2.1 AERODROME LOCATION INDICATOR AND NAME	LSZR AD 2 - 1
LSZR AD 2.2 AERODROME GEOGRAPHICAL AND ADMINISTRATIVE DATA	LSZR AD 2 - 1
LSZR AD 2.3 OPERATIONAL HOURS	LSZR AD 2 - 1
LSZR AD 2.4 HANDLING SERVICES AND FACILITIES	LSZR AD 2 - 2
LSZR AD 2.5 PASSENGER FACILITIES	LSZR AD 2 - 3
LSZR AD 2.6 RESCUE AND FIRE FIGHTING SERVICES	LSZR AD 2 - 3
LSZR AD 2.7 SEASONAL AVAILABILITY - CLEARING	LSZR AD 2 - 3
LSZR AD 2.8 APRONS, TAXIWAYS AND CHECK LOCATIONS/POSITIONS DATA	LSZR AD 2 - 4
LSZR AD 2.9 SURFACE MOVEMENT GUIDANCE, CONTROL SYSTEM AND MARKINGS	LSZR AD 2 - 4
LSZR AD 2.10 AERODROME OBSTACLES	LSZR AD 2 - 5
LSZR AD 2.11 METEOROLOGICAL INFORMATION PROVIDED	LSZR AD 2 - 6
LSZR AD 2.12 RUNWAY PHYSICAL CHARACTERISTICS	LSZR AD 2 - 6
LSZR AD 2.13 DECLARED DISTANCES	LSZR AD 2 - 7
LSZR AD 2.14 APPROACH AND RUNWAY LIGHTING	LSZR AD 2 - 7
LSZR AD 2.15 OTHER LIGHTING, SECONDARY POWER SUPPLY	LSZR AD 2 - 7

LSZR AD 2.16 HELICOPTER LANDING AREA	LSZR AD 2 - 8
LSZR AD 2.17 ATS AIRSPACE	LSZR AD 2 - 8
LSZR AD 2.18 ATS COMMUNICATION FACILITIES	LSZR AD 2 - 8
LSZR AD 2.19 RADIO NAVIGATION AND LANDING AIDS	LSZR AD 2 - 9
LSZR AD 2.20 LOCAL AERODROME REGULATIONS	LSZR AD 2 - 10
1. Local flying restrictions and remarks	LSZR AD 2 - 10
2. Transponder Mandatory Zone (TMZ NE)	LSZR AD 2 - 10
LSZR AD 2.21 NOISE ABATEMENT PROCEDURES	LSZR AD 2 - 10
1. Reverse thrust	LSZR AD 2 - 10
2. Taxi and holding	LSZR AD 2 - 10
3. Meteo condition	LSZR AD 2 - 10
LSZR AD 2.22 FLIGHT PROCEDURES	LSZR AD 2 - 11
1. Special regulations for IFR approach and departure	LSZR AD 2 - 11
2. Minima for IFR departures (TKOF minima)	LSZR AD 2 - 18
LSZR AD 2.23 ADDITIONAL INFORMATION	LSZR AD 2 - 19
1. List of significant points	LSZR AD 2 - 19
2. Classification of the Instrument Landing System (ILS)	LSZR AD 2 - 19
LSZR AD 2.24 AERONAUTICAL CHARTS RELATED TO AN AERODROME	LSZR AD 2 - 20
LSZR AD 2.25 VISUAL SEGMENT SURFACE (VSS) PENETRATION	LSZR AD 2 - 20
LSZS - SAMEDAN	LSZS AD 2 - 1
LSZS AD 2.1 AERODROME LOCATION INDICATOR AND NAME	LSZS AD 2 - 1
LSZS AD 2.2 AERODROME GEOGRAPHICAL AND ADMINISTRATIVE DATA	LSZS AD 2 - 1
LSZS AD 2.3 OPERATIONAL HOURS	LSZS AD 2 - 1
LSZS AD 2.4 HANDLING SERVICES AND FACILITIES	LSZS AD 2 - 2
LSZS AD 2.5 PASSENGER FACILITIES	LSZS AD 2 - 2
LSZS AD 2.6 RESCUE AND FIRE FIGHTING SERVICES	LSZS AD 2 - 2
LSZS AD 2.7 SEASONAL AVAILABILITY - CLEARING	LSZS AD 2 - 2
LSZS AD 2.8 APRONS, TAXIWAYS AND CHECK LOCATIONS/POSITIONS DATA	LSZS AD 2 - 3
LSZS AD 2.9 SURFACE MOVEMENT GUIDANCE, CONTROL SYSTEM AND MARKINGS	LSZS AD 2 - 3
LSZS AD 2.10 AERODROME OBSTACLES	LSZS AD 2 - 3
LSZS AD 2.11 METEOROLOGICAL INFORMATION PROVIDED	LSZS AD 2 - 5
LSZS AD 2.12 RUNWAY PHYSICAL CHARACTERISTICS	LSZS AD 2 - 5
LSZS AD 2.13 DECLARED DISTANCES	LSZS AD 2 - 5
LSZS AD 2.14 APPROACH AND RUNWAY LIGHTING	LSZS AD 2 - 6

LSZS AD 2.15 OTHER LIGHTING, SECONDARY POWER SUPPLY	LSZS AD 2 - 6
LSZS AD 2.16 HELICOPTER LANDING AREA	LSZS AD 2 - 6
LSZS AD 2.17 ATS AIRSPACE	LSZS AD 2 - 7
LSZS AD 2.18 ATS COMMUNICATION FACILITIES	LSZS AD 2 - 7
LSZS AD 2.19 RADIO NAVIGATION AND LANDING AIDS	LSZS AD 2 - 7
LSZS AD 2.20 LOCAL AERODROME REGULATIONS	LSZS AD 2 - 8
1. Local flying restrictions and remarks	LSZS AD 2 - 8
2. Procedure for taxiing ACFT	LSZS AD 2 - 8
LSZS AD 2.21 NOISE ABATEMENT PROCEDURES	LSZS AD 2 - 8
1. Jet and turbo-prop ACFT	LSZS AD 2 - 8
2. Propeller aeroplanes	LSZS AD 2 - 8
LSZS AD 2.22 FLIGHT PROCEDURES	LSZS AD 2 - 9
1. Special regulations for IFR approach and departure	LSZS AD 2 - 9
LSZS AD 2.23 ADDITIONAL INFORMATION	LSZS AD 2 - 13
1. List of significant points (Terminal)	LSZS AD 2 - 14
LSZS AD 2.24 AERONAUTICAL CHARTS RELATED TO AN AERODROME	LSZS AD 2 - 14
LSZS AD 2.25 VISUAL SEGMENT SURFACE (VSS) PENETRATION	LSZS AD 2 - 14
LSGS - SION	LSGS AD 2 - 1
LSGS AD 2.1 AERODROME LOCATION INDICATOR AND NAME	LSGS AD 2 - 1
LSGS AD 2.2 AERODROME GEOGRAPHICAL AND ADMINISTRATIVE DATA	LSGS AD 2 - 1
LSGS AD 2.3 OPERATIONAL HOURS	LSGS AD 2 - 1
LSGS AD 2.4 HANDLING SERVICES AND FACILITIES	LSGS AD 2 - 2
LSGS AD 2.5 PASSENGER FACILITIES	LSGS AD 2 - 2
LSGS AD 2.6 RESCUE AND FIRE FIGHTING SERVICES	LSGS AD 2 - 2
LSGS AD 2.7 SEASONAL AVAILABILITY - CLEARING	LSGS AD 2 - 3
LSGS AD 2.8 APRONS, TAXIWAYS AND CHECK LOCATIONS/POSITIONS DATA	LSGS AD 2 - 3
LSGS AD 2.9 SURFACE MOVEMENT GUIDANCE, CONTROL SYSTEM AND MARKINGS	LSGS AD 2 - 3
LSGS AD 2.10 AERODROME OBSTACLES	LSGS AD 2 - 4
LSGS AD 2.11 METEOROLOGICAL INFORMATION PROVIDED	LSGS AD 2 - 5
LSGS AD 2.12 RUNWAY PHYSICAL CHARACTERISTICS	LSGS AD 2 - 6
LSGS AD 2.13 DECLARED DISTANCES	LSGS AD 2 - 6
LSGS AD 2.14 APPROACH AND RUNWAY LIGHTING	LSGS AD 2 - 7

LSGS AD 2.15 OTHER LIGHTING, SECONDARY POWER SUPPLY	LSGS AD 2 - 7
LSGS AD 2.16 HELICOPTER LANDING AREA	LSGS AD 2 - 8
LSGS AD 2.17 ATS AIRSPACE	LSGS AD 2 - 9
LSGS AD 2.18 ATS COMMUNICATION FACILITIES	LSGS AD 2 - 9
LSGS AD 2.19 RADIO NAVIGATION AND LANDING AIDS	LSGS AD 2 - 9
LSGS AD 2.20 LOCAL AERODROME REGULATIONS	LSGS AD 2 - 10
1. Local flying restrictions and remarks	LSGS AD 2 - 10
2. MIL Equipment	LSGS AD 2 - 10
3. Airport regulation	LSGS AD 2 - 10
4. ACFT guidance on apron	LSGS AD 2 - 11
5. Aircraft parking SECTOR NORTH	LSGS AD 2 - 11
6. High-visibility equipment	LSGS AD 2 - 11
LSGS AD 2.21 NOISE ABATEMENT PROCEDURES	LSGS AD 2 - 11
1. Auxiliary Power Units (APU)	LSGS AD 2 - 11
LSGS AD 2.22 FLIGHT PROCEDURES	LSGS AD 2 - 12
1. Special regulations for IFR approach and departure	LSGS AD 2 - 12
2. VFR procedure	LSGS AD 2 - 19
3. Description of Instrument Guidance System (IGS)	LSGS AD 2 - 19
4. Minima for IFR departures (TKOF minima)	LSGS AD 2 - 20
LSGS AD 2.23 ADDITIONAL INFORMATION	LSGS AD 2 - 20
1. List of significant points (Terminal)	LSGS AD 2 - 20
2. Table for temperature deviation from ISA	LSGS AD 2 - 22
LSGS AD 2.24 AERONAUTICAL CHARTS RELATED TO AN AERODROME	LSGS AD 2 - 22
LSGS AD 2.25 VISUAL SEGMENT SURFACE (VSS) PENETRATION	LSGS AD 2 - 22
LSZH - ZURICH	LSZH AD 2 - 1
LSZH AD 2.1 AERODROME LOCATION INDICATOR AND NAME	LSZH AD 2 - 1
LSZH AD 2.2 AERODROME GEOGRAPHICAL AND ADMINISTRATIVE DATA	LSZH AD 2 - 1
LSZH AD 2.3 OPERATIONAL HOURS	LSZH AD 2 - 1
LSZH AD 2.4 HANDLING SERVICES AND FACILITIES	LSZH AD 2 - 1
LSZH AD 2.5 PASSENGER FACILITIES	LSZH AD 2 - 2
LSZH AD 2.6 RESCUE AND FIRE FIGHTING SERVICES	LSZH AD 2 - 3
LSZH AD 2.7 SEASONAL AVAILABILITY - CLEARING	LSZH AD 2 - 3
LSZH AD 2.8 APRONS, TAXIWAYS AND CHECK LOCATIONS/POSITIONS DATA	LSZH AD 2 - 3
LSZH AD 2.9 SURFACE MOVEMENT GUIDANCE AND CONTROL SYSTEM, MARKINGS	LSZH AD 2 - 6
LSZH AD 2.10 AERODROME OBSTACLES	LSZH AD 2 - 7
LSZH AD 2.11 METEOROLOGICAL INFORMATION PROVIDED	LSZH AD 2 - 13

LSZH AD 2.12 RUNWAY PHYSICAL CHARACTERISTICS	LSZH AD 2 - 13
LSZH AD 2.13 DECLARED DISTANCES	LSZH AD 2 - 14
LSZH AD 2.14 APPROACH AND RUNWAY LIGHTING	LSZH AD 2 - 15
LSZH AD 2.15 OTHER LIGHTING, SECONDARY POWER SUPPLY	LSZH AD 2 - 16
LSZH AD 2.16 HELICOPTER LANDING AREA	LSZH AD 2 - 16
LSZH AD 2.17 ATS AIRSPACE	LSZH AD 2 - 17
LSZH AD 2.18 ATS COMMUNICATION FACILITIES	LSZH AD 2 - 17
LSZH AD 2.19 RADIO NAVIGATION AND LANDING AIDS	LSZH AD 2 - 18
LSZH AD 2.20 LOCAL AERODROME REGULATIONS	LSZH AD 2 - 22
1. Local flying restrictions	LSZH AD 2 - 22
2. Airport slot permission request procedures	LSZH AD 2 - 23
3. Aircraft guidance and procedures on Apron and TWYs	LSZH AD 2 - 25
4. Ground handling	LSZH AD 2 - 29
5. ACFT De-icing	LSZH AD 2 - 31
6. IFR/VFR mixed operations	LSZH AD 2 - 32
7. IFR operations	LSZH AD 2 - 33
LSZH AD 2.21 NOISE ABATEMENT PROCEDURES	LSZH AD 2 - 34
1. General	LSZH AD 2 - 34
2. Approaches	LSZH AD 2 - 34
3. Departures	LSZH AD 2 - 36
4. Engine Tests	LSZH AD 2 - 36
LSZH AD 2.22 FLIGHT PROCEDURES	LSZH AD 2 - 37
1. SID Description	LSZH AD 2 - 37
2. STAR Description	LSZH AD 2 - 58
3. JAA minima for Zurich AP	LSZH AD 2 - 70
4. Minima for IFR departures (TKOF minima)	LSZH AD 2 - 71
LSZH AD 2.23 ADDITIONAL INFORMATION	LSZH AD 2 - 72
1. List of significant points (Terminal)	LSZH AD 2 - 72
LSZH AD 2.24 AERONAUTICAL CHARTS RELATED TO AN AERODROME	LSZH AD 2 - 76
LSZH AD 2.25 VISUAL SEGMENT SURFACE (VSS) PENETRATION	LSZH AD 2 - 77

THIS PAGE INTENTIONALLY LEFT BLANK

AD 1.3 INDEX OF AERODROMES AND HELIPORTS

Aerodrome/heliport name Location indicator	Type of traffic permitted to use the aerodrome/heliport			Reference to AD Section and remarks
	International - National (INTL - NTL)	IFR - VFR	S = Scheduled NS = Non- scheduled P = Private M = Military H = HEMS	
1	2	3	4	5
Aarau Kantonsspital (HEL) LSHA	NTL	IFR - VFR	H	IFR with FOCA permission only
Alpnach (MIL) LSMA	MIL	NIL	NIL	NIL
Ambri LSPM	NTL	VFR	P	VFR Manual, AD INFO
Amlikon (Restricted) LSPA	NTL	VFR	P	VFR Manual, AD INFO
Bad Ragaz LSZE	NTL	VFR	P	VFR Manual, AD INFO
Bâle Mulhouse LFSB	INTL - NTL	IFR - VFR	S - NS - P	see AIP FRANCE www.sia.aviation-civile.gouv.fr
Balzers (HEL) LSXB	NTL	VFR	P	VFR Manual, HEL AGA & AD INFO
Basel Universitaetsspital (HEL) LSHB	NTL	IFR - VFR	H	IFR with FOCA permission only
Bellechasse (Restricted) LSTB	NTL	VFR	P	VFR Manual, AD INFO
Bern-Belp LSZB	INTL - NTL	IFR - VFR	S - NS - P	AD 2 LSZB VFR Manual, AD INFO
Bern Inselspital (HEL) LSHI	NTL	IFR - VFR	H	IFR with FOCA permission only
Bern-Sand (HEL) LSNB	MIL	IFR - VFR	M	IFR with MAA permission only
Bex LSGB	NTL	VFR	P	VFR Manual, AD INFO
Biel-Kappelen LSZP	NTL	VFR	P	VFR Manual, AD INFO
Bière (HEL) LSNI	MIL	NIL	NIL	NIL
Birrfeld LSZF	INTL - NTL	VFR	NS - P	VFR Manual, AD INFO
Blumental (Winter AD) LSWB	NTL	VFR	P	VFR Manual, VFR AGA
Bressaucourt LSZQ	INTL - NTL	VFR	NS - P	VFR Manual, AD INFO
Buochs LSZC	INTL - NTL	VFR	P	AD 2 LSZC VFR Manual, AD INFO
Bure (HEL) LSNU	MIL	IFR - VFR	M - H	IFR with MAA permission only
Buttwil LSZU	NTL	VFR	P	VFR Manual, AD INFO
Chur (Graubunden Kantonsspital) (HEL) LSHC	NTL	IFR - VFR	H	IFR with FOCA permission only
Collombey-Muraz (HEL) (Restricted) LSEC	NTL	VFR	P	VFR Manual, HEL AGA
Courtelary LSZJ	NTL	VFR	P	VFR Manual, AD INFO
Davos Regionalspital (HEL) LSHD	NTL	IFR - VFR	H	IFR with FOCA permission only

Aerodrome/heliport name Location indicator	Type of traffic permitted to use the aerodrome/heliport			Reference to AD Section and remarks
	International - National (INTL - NTL)	IFR - VFR	S = Scheduled NS = Non- scheduled P = Private M = Military H = HEMS	
1	2	3	4	5
Delémont (Hôpital de Delémont) (HEL) LSKD	NTL	IFR - VFR	H	IFR with FOCA permission only
Dittingen (Restricted) LSPD	NTL	VFR	P	VFR Manual, AD INFO
Dübendorf (MIL) LSMD	MIL	IFR - VFR	NS - P - M - H	IFR with MAA permission only
Ecuwillens LSGE	INTL - NTL	VFR	NS - P	VFR Manual, AD INFO
Emmen (MIL) LSME	MIL	IFR - VFR	NS - P - M - H	IFR with MAA permission only
Erstfeld (HEL) (Restricted) LSXE	NTL	VFR	P	VFR Manual, HEL AGA
Frauenfeld (MIL) LSNF	MIL	IFR - VFR	M - H	IFR with MAA permission only
Fricktal-Schupfart LSZI	INTL - NTL	VFR	P	VFR Manual, AD INFO
Gampel (HEL) (Restricted) LSEG	INTL - NTL	VFR	P	VFR Manual, HEL AGA
Genève LSGG	INTL - NTL	IFR - VFR	S - NS - P	AD 2 LSGG VFR Manual, AD INFO
Genève HUG (HEL) LSHU	NTL	IFR - VFR	H	IFR with FOCA permission only
Gossau (HEL) (Restricted) LSXO	NTL	VFR	P - H	VFR Manual, HEL AGA & AD INFO
Gösgen (HEL) LSNO	MIL	NIL	NIL	NIL
Grenchen LSZG	INTL - NTL	IFR - VFR	NS - P	AD 2 LSZG VFR Manual, AD INFO
Gruyères LSGT	NTL	VFR	P	VFR Manual, AD INFO
Gstaad-Inn (Winter HEL) (Restricted) LSEA	NTL	VFR	P	VFR Manual, HEL AGA
Gsteigwiler (HEL) LSXG	NTL	VFR	P	VFR Manual, HEL AGA & AD INFO
Haltikon (HEL) LSXN	NTL	VFR	P	VFR Manual, HEL AGA
Hausen am Albis (Restricted) LSZN	NTL	VFR	P	VFR Manual, AD INFO
Holziken (HEL) LSXH	NTL	VFR	P	VFR Manual, HEL AGA
Interlaken (HEL) (Restricted) LSXI	NTL	VFR	P	VFR Manual, HEL AGA & AD INFO
Interlaken Spital (HEL) LSHK	NTL	IFR - VFR	H	IFR with FOCA permission only
Kägiswil (Restricted) LSPG	NTL	VFR	P	NIL
Lachen (Water AD) LSPW	NTL	VFR	P	VFR Manual, VFR AGA
La Côte LSGP	NTL	VFR	P	VFR Manual, AD INFO

Aerodrome/heliport name Location indicator	Type of traffic permitted to use the aerodrome/heliport			Reference to AD Section and remarks
	International - National (INTL - NTL)	IFR - VFR	S = Scheduled NS = Non- scheduled P = Private M = Military H = HEMS	
	1	2	3	
Langenthal LSPL	NTL	VFR	P	VFR Manual, AD INFO
Lauberhorn (Winter AD) LSWL	NTL	VFR	P	VFR Manual, VFR AGA
Lausanne-La Blécherette LSGL	INTL - NTL	VFR	NS - P	VFR Manual, AD INFO
Lausanne CHUV (HEL) LSHV	NTL	IFR - VFR	H	IFR with FOCA permission only
Lauterbrunnen (HEL) LSXL	NTL	VFR	P	VFR Manual, AD INFO & HEL AGA
Les Éplatures LSGC	INTL - NTL	IFR - VFR	NS - P	AD 2 LSGC VFR Manual, AD INFO
Leysin (HEL) LSEY	NTL	VFR	P	VFR Manual, HEL AGA & AD INFO
Locarno LSZL	INTL - NTL	VFR	NS - P	VFR Manual, AD INFO
Locarno (MIL) LSMO	MIL	IFR - VFR	M - H	IFR with MAA permission only
Lodrino LSPR	NTL	VFR	P	VFR Manual, AD INFO
Lommis LSZT	NTL	VFR	P	VFR Manual, AD INFO
Lugano LSZA	INTL - NTL	IFR - VFR	S - NS - P	AD 2 LSZA VFR Manual, AD INFO
Luzern-Beromünster LSZO	NTL	VFR	P	VFR Manual, AD INFO
Luzern Kantonsspital (HEL) LSHL	NTL	IFR - VFR	H	IFR with FOCA permission only
Männlichen (Winter AD) LSWM	NTL	VFR	P	VFR Manual, VFR AGA
Meiringen (MIL) LSMM	MIL	IFR - VFR	M - H	IFR with MAA permission only
Mollis LSZM	INTL - NTL	VFR	P	NIL
Montricher (Restricted) LSTR	NTL	VFR	P	VFR Manual, AD INFO
Môtiers LSTO	NTL	VFR	P	VFR Manual, AD INFO
Münster (Restricted) LSPU	NTL	VFR	P	VFR Manual, AD INFO
Neuchâtel LSGN	INTL - NTL	VFR	NS - P	VFR Manual, AD INFO
Nottwil SPZ (HEL) LSHH	NTL	IFR - VFR	H	IFR with FOCA permission only
Olten (Restricted) LSPO	NTL	VFR	P	VFR Manual, AD INFO
Payerne (MIL/CIV) LSMP	INTL - NTL	IFR - VFR	NS - P	AD 2 LSMP VFR Manual, AD INFO
Pfaffnau (HEL) (Restricted) LSXP	NTL	VFR	P	VFR Manual, HEL AGA

Aerodrome/heliport name Location indicator	Type of traffic permitted to use the aerodrome/heliport			Reference to AD Section and remarks
	International - National (INTL - NTL)	IFR - VFR	S = Scheduled NS = Non- scheduled P = Private M = Military H = HEMS	
1	2	3	4	5
Porrentruy (Hôpital du Jura) (HEL) LSKP	NTL	IFR - VFR	H	IFR with FOCA (and MAA) permission only
Raron (HEL) LSER	NTL	VFR	P	VFR Manual, HEL AGA & AD INFO
Raron LSTA	NTL	VFR	P	VFR Manual, AD INFO
Reichenbach LSGR	NTL	VFR	P	VFR Manual, AD INFO
Rennaz (HEL) LSNR	MIL	IFR - VFR	M - H	IFR with MAA permission only
Rennaz (Hôpital Riviera-Chablais) (HEL) LSCR	NTL	IFR - VFR	H	IFR with FOCA (and MAA) permission only
Saanen LSGK	INTL - NTL	VFR	NS - P	VFR Manual, AD INFO
Samedan LSZS	INTL - NTL	VFR	S - NS - P	AD 2 LSZS VFR Manual, AD INFO
San Vittore (HEL) LSXV	NTL	VFR	P	VFR Manual, HEL AGA & AD INFO
Schaffhausen LSPF	NTL	VFR	P	VFR Manual, AD INFO
Schänis (Restricted) LSZX	NTL	VFR	P	VFR Manual, AD INFO
Schattenhalb (HEL) LSXC	NTL	VFR	P	VFR Manual, HEL AGA
Schindellegi (HEL) LSXS	NTL	VFR	P	VFR Manual, HEL AGA & AD INFO
Schwarzsee (Winter AD) LSWS	NTL	VFR	P	VFR Manual, VFR AGA
Sion (MIL/CIV) LSGS	INTL - NTL	IFR - VFR	NS - P	AD 2 LSGS VFR Manual, AD INFO
Sion (Hôpital de Sion) (HEL) LSHS	NTL	IFR - VFR	H	IFR with FOCA permission only
Sitterdorf LSZV	NTL	VFR	P	VFR Manual, AD INFO
Speck-Fehraltorf LSZK	NTL	VFR	P	VFR Manual, AD INFO
St. Gallen-Altenrhein LSZR	INTL - NTL	IFR - VFR	S - NS - P	AD 2 LSZR VFR Manual, AD INFO
St. Gallen-Breitfeld (MIL) LSNG	MIL	IFR - VFR	M - H	IFR with MAA permission only
St. Gallen Kantonsspital (HEL) LSHG	NTL	IFR - VFR	H	IFR with FOCA permission only
St. Gallen Ostschweizer Kinderspital (HEL) LSHN	NTL	IFR - VFR	H	IFR (LSHG) with FOCA permission only
St. Moritz (Winter HEL) (Restricted) LSXM	NTL	VFR	P	VFR Manual, HEL AGA
St. Stephan (Restricted) LSTS	NTL	VFR	P	NIL
Tavanasa (HEL) LSXA	NTL	VFR	P	VFR Manual, HEL AGA & AD INFO

Aerodrome/heliport name Location indicator	Type of traffic permitted to use the aerodrome/heliport			Reference to AD Section and remarks
	International - National (INTL - NTL)	IFR - VFR	S = Scheduled NS = Non- scheduled P = Private M = Military H = HEMS	
	1	2	3	
Thun LSZW	NTL	VFR	P	VFR Manual, AD INFO
Triengen LSPN	NTL	VFR	P	VFR Manual, AD INFO
Trogen (HEL) (Restricted) LSXT	NTL	VFR	P	VFR Manual, HEL AGA & AD INFO
Untervaz (HEL) LSXU	NTL	VFR	P	VFR Manual, HEL AGA & AD INFO
Wangen-Lachen LSPV	NTL	VFR	P	VFR Manual, AD INFO
Winterthur (Restricted) LSPH	NTL	VFR	P	VFR Manual, AD INFO
Winterthur Kantonsspital (HEL) LSHW	NTL	IFR - VFR	H	IFR with FOCA permission only
Würenlingen (HEL) (Restricted) LSXW	NTL	VFR	P	VFR Manual, HEL AGA
Yverdon-les-Bains LSGY	NTL	VFR	P	VFR Manual, AD INFO
Zermatt (HEL) LSEZ	NTL	VFR	P	VFR Manual, HEL AGA & AD INFO
Zurich LSZH	INTL - NTL	IFR - VFR	S - NS - P	AD 2 LSZH VFR Manual, AD INFO
Zurich Kinderspital (HEL) LSHJ	NTL	IFR - VFR	H	IFR with FOCA permission only
Zurich Universitätsspital (HEL) LSHZ	NTL	IFR - VFR	H	IFR with FOCA permission only
Zweisimmen (Restricted) LSTZ	NTL	VFR	P	VFR Manual, AD INFO

THIS PAGE INTENTIONALLY LEFT BLANK

7	Remarks	<p>Ground handling agent and parking permission: compulsory for scheduled and charter FLTs and all taxi FLTs and non commercial air transport</p> <ul style="list-style-type: none"> • with ACFT above 3.5 tonnes MTOM to and from Schengen destinations • for all ACFT to and from Non-Schengen destinations <p>Ground Services Bern Phone: +41 (0) 31 960 21 31 Fax: +41 (0) 31 960 21 41 SITA: BRNKXXH FREQ: 131.410 MHz (Ground Services Bern) RTF: GROUND SERVICES BERN Email: groundservices@bernairport.ch</p>
---	---------	---

LSZB AD 2.5 PASSENGER FACILITIES

1	Hotels	At AD and in the city
2	Restaurants	At AD and in the city
3	Transportation	Buses, taxis and car rental from AD
4	Medical facilities	Ambulance O/R; hospital at Belp and in the city O/R
5	Bank and Post Office	Cash dispenser at AD, post office in the city
6	Tourist Office	<p>Tourist Office and Convention Bureau of Berne Post: main railway station P.O. Box 3001 Berne CH-3008 Berne Phone: +41 (0) 31 328 12 12 Fax: +41 (0) 31 328 12 77</p>
7	Remarks	<p>Inadmissible persons Due to limited infrastructure AVBL for the custody and care of inadmissible persons such passengers can stay at the facilities of the AP for a period of no longer than 24 hrs. In all circumstances, persons found inadmissible have to be removed by the operator the day after the ARR of such passengers using its own services or by alternate removal arrangements, at the latest. The operator will have to bear all costs in relation to such removal as apportioned to operators in accordance with applicable rules of public international and national law.</p>

LSZB AD 2.6 RESCUE AND FIRE FIGHTING SERVICES

1	AD category for fire fighting	<p>Category 3 0700 - 1800 (0600 - 1700) Category 2 MON - SUN 1800 - 2000 (1700 - 1900) Higher category: MAX CAT 7 O/R MNM 3 HR before ETA/ETD, by phone +41 (0) 31 960 21 31 for scheduled traffic category 4 or higher according to aircraft type, MAX CAT 7.</p>
2	Rescue equipment	4 fire engines, 1 ramp-control vehicle
3	Capability for removal of disabled aircraft	Lifting bags and electrical jacks available
4	Remarks	NIL

LSZB AD 2.7 SEASONAL AVAILABILITY - CLEARING

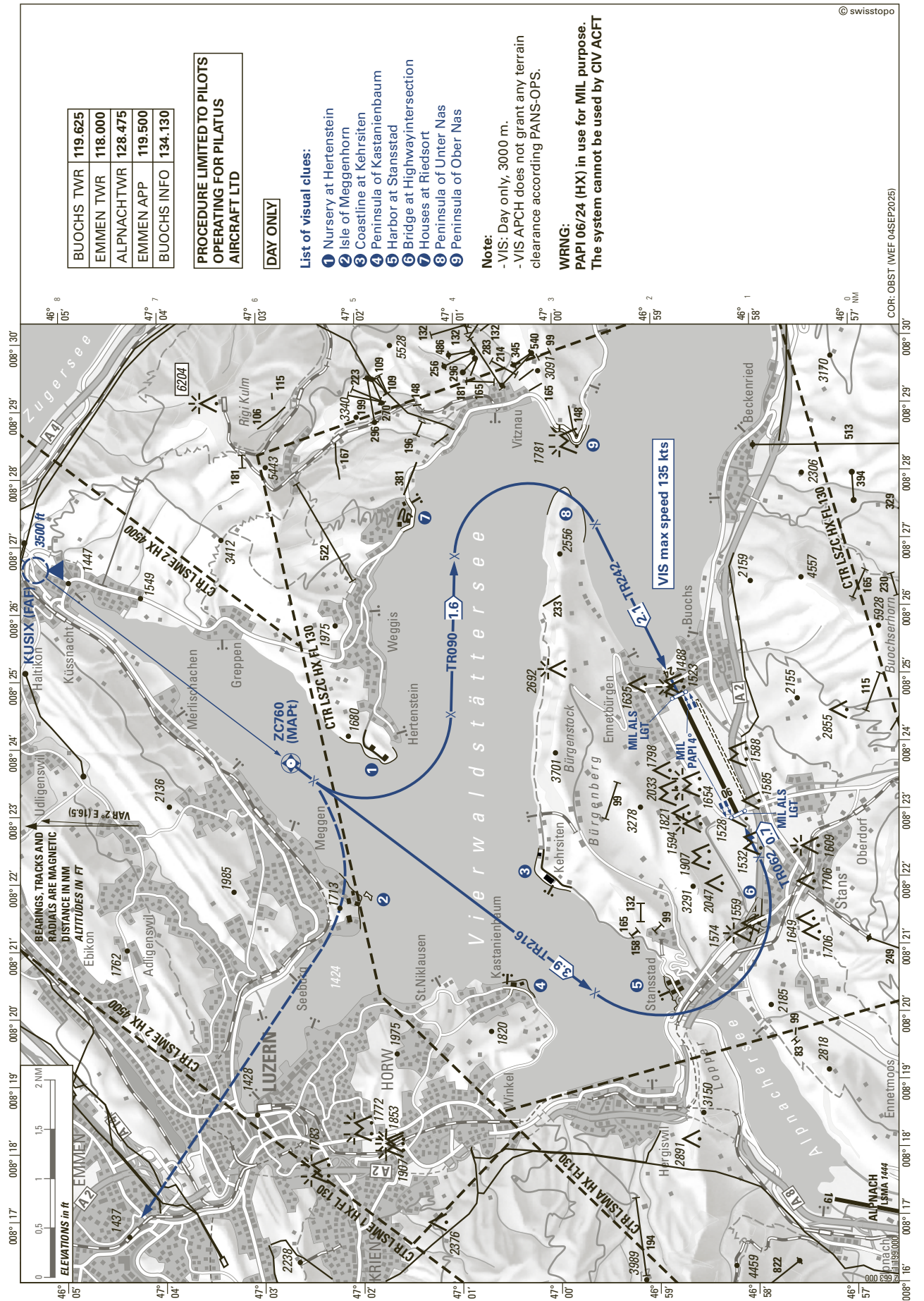
1	Type(s) of clearing equipment	2 snow ploughs / jet sweeper, 1 RWY de-icer, 2 ACFT de-icers
2	Clearance priorities	<ol style="list-style-type: none"> 1. RWY ASPH 2. TWY C 3. TWY K & F 4. TWY A, B, D 5. Apron 6. Other
3	Remarks	<p>RDF: Basic Solutions Runway De-icing Fluid GEN3 6-4 RWY 14/32 de-icing with GAC (glycerol/acetatbasic fluids)</p>

LSZB AD 2.8 APRONS, TAXIWAYS AND CHECK LOCATIONS/POSITIONS DATA

1	Designation, surface and strength of Aprons	ASPH - PCR 426/F/C/X/U GRASS - 0.25 MPa
2	Designation, width, surface and strength of Taxiways	Widths: TWY A: 7.5 m; TWY B: 15.5 m; TWY C: 18.0 m; TWY D: 10.0 m TWY E: 9.0 m; TWY F: 20.5 m; TWY G: 7.5 m TWY K: BTN TWY B and TWY C: 14.0 m; BTN TWY C and Stand Y7: 16.0 m BTN Stand Y7 and TWY E: 10.0 m; BTN TWY E and TWY F: 18.0 m. Surface: TWY A, B, C, D, F and K: ASPH, PCR 426/F/C/X/U. TWY E: GRASS, max. 5.7 t MTOM. TWY G: GRASS, 0.25 MPa MAX wingspan: TWY A: 13.0 m; TWY B, D: 21.5 m; TWY C, F: 36.0 m; TWY E, G: 15.0 m TWY K: 21.5 m except 34.3 m BTN stand Y3 and stand Y7. RMK: 36.0 m on stand Y3A as access/egress directly via TWY C. MAX outer main gear wheel span: TWY A, E, G: 4.5 m; TWY B: 9.0 m; TWY C: 10.0 m; TWY D: 5.5 m; TWY F: 12.5 m TWY K: BTN TWY B and TWY C: 8.0 m; BTN TWY C and Stand Y7: 9.3 m. BTN stand Y7 and TWY E: 5.5 m; BTN TWY E and TWY F: 10.0 m.
3	ACL location and elevation	At apron / 510 m / 1673 ft
4	Location of VOR checkpoints	NIL
5	Location of INS checkpoints	NIL
6	Remarks	Grass TWY A, C and G closed.

LSZB AD 2.9 SURFACE MOVEMENT GUIDANCE, CONTROL SYSTEM AND MARKINGS

1	Use of aircraft stand ID signs, TWY guide lines and visual docking/parking guidance system of aircraft stands	Sectors YELLOW and GREEN: ACFT stand identification markings as well as lead-in, stop and lead-out lines. Sector BLUE: Safety line only (box). Apron safety lines east of TWY A resp. TWY K. Marshalling available for sectors YELLOW, GREEN and BLUE. On the apron, wing tip clearance is guaranteed if the cockpit of the ACFT follows the CL markings. Restrictions: See ACFT PRKG Chart LSZB AD 2.24.2 - 1
2	RWY/TWY markings and LGT	Paved RWY markings: DTHR, THR, designation, aiming point and centre line. Grass RWY closed. Paved TWY markings: Centre line (including on turn pads) and intermediate holding position. Grass TWY markings / markers: Edge markers. Markings at paved intersections with RWY: RWY holding position, mandatory instruction and enhanced TWY centre line. Markings/markers at unpaved intersection with RWY: RWY holding position. RWY LGT: See LSZB AD 2.14 TWY LGT: See LSZB AD 2.15
3	Stop bars and RWY guard lights	Stop bars: NIL RGL: TWY A, B, C, D, E and F. LIH, Y, no LED.
4	Other RWY protection measures	NIL
5	Remarks	RWY holding positions at TWY B, C, D and E are located 65 m from RWY 14/32 centre line (EASA 75 m). Special operational procedures are in force to ensure RWY strip clearance. Mandatory instruction signs at all RWY holding positions. Information signs on the movement area.



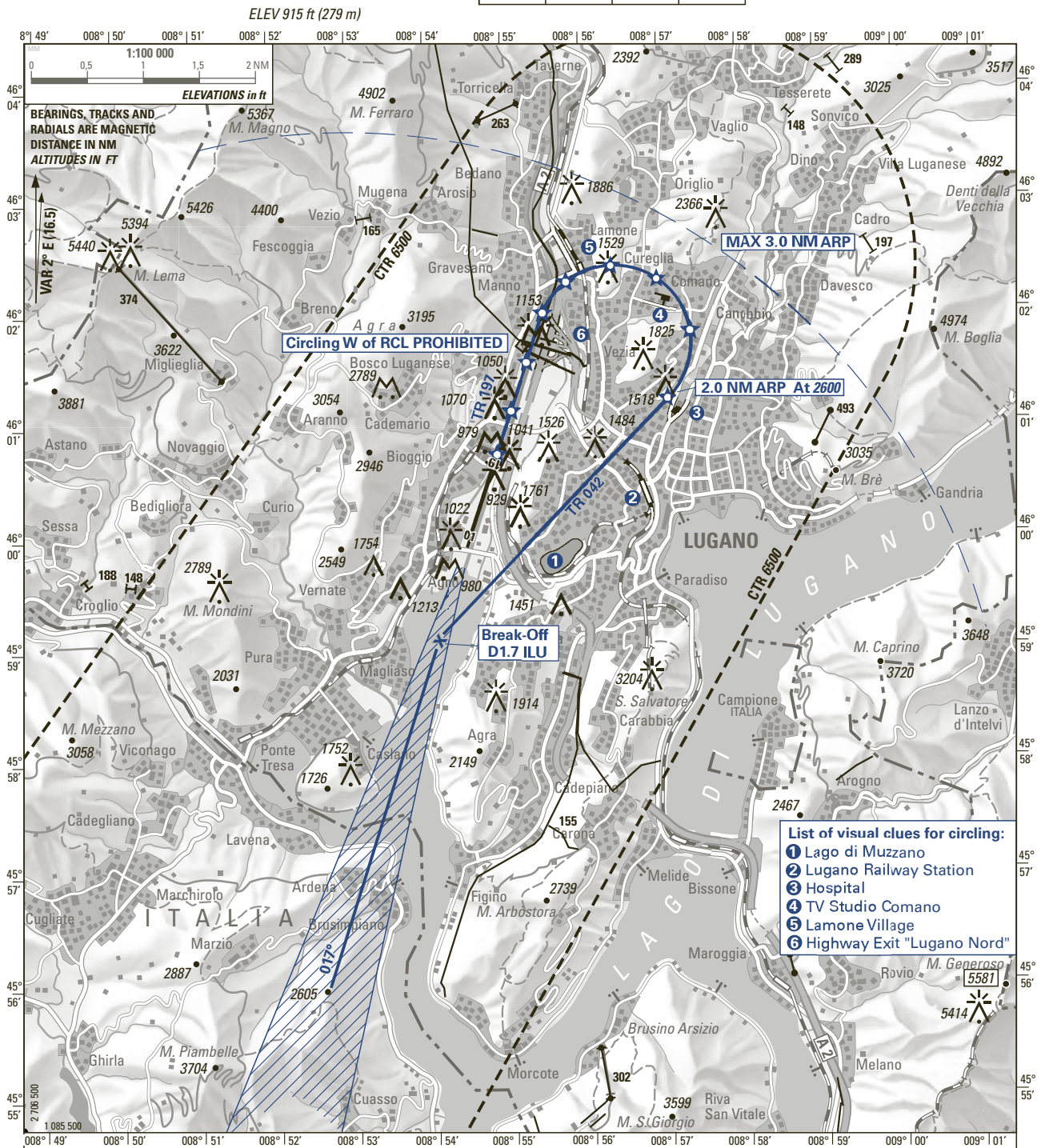
THIS PAGE INTENTIONALLY LEFT BLANK

THIS PAGE INTENTIONALLY LEFT BLANK

VISUAL APPROACH PROCEDURE

ATIS	121.175		
TWR	120.250	119.700	121.500
CLR DEL	121.780		

LUGANO (LSZA)
CHARLIE CIRCLING RWY 19



WARNING: Disregard PAPI RWY 01 information.
Use PAPI RWY 19 information only within 2 NM from THR

Descent to be arranged to maintain clean configuration as long as possible, safety and ATC requirement considered.

RLLS RWY 19:
- In case of failure of the RLLS 19, each concerned mast will be numbered on the published NOTAM. Numbering starts with (L1) at the end of the downwind leg and runs until (L9) for last pole before THR 19.
- HN: If RLLS RWY 19 u/s, then no clouds below 3000 ft QNH.

OBST ELEV: ft / HGT: ft
COR: OBST (WEF 04SEP2025)

OCA/H CIRCLING	1)
A & B	VIS m
1)	Day 3000
2600 (1685)	Night 5000

CIRCLING PROCEDURE
If visual contact is established at D2.2 ILU, continue straight ahead. At D1.7 ILU turn right on track 042° and continue descent visually to 2600 ft.
At 2 NM ARP start left turn onto base.

1) Only applicable by operators complying with the requirements of § 2.22.1.1.4.2 § 2b), otherwise the following minimum conditions must be observed:
VIS 5000 m and ceiling 3100 ft AAL, day only.

THIS PAGE INTENTIONALLY LEFT BLANK

THIS PAGE INTENTIONALLY LEFT BLANK

7. IFR operations

7.1 RNAV 1 requirement

All aircraft operating under IFR to and from Zurich Airport are required to be eligible for RNAV 1 operations. Aircraft operators shall be approved for RNAV 1 and flight crews shall be qualified accordingly. For exemptions refer to chapter 1.7.

7.2 iStream Procedure

7.2.1 Goal

iStream is a process concerning all IFR inbound flights to LSZH between 0500 and 0600 (0400 and 0500). It aims at an early pre-planning of an optimized approach sequence in order to:

- Prevent holding delay due to night curfew regulations
- Reduce fuel consumption

7.2.2 Participation

The participation to the process is mandatory for flights expected to arrive between 0500 and 0600 (0400 and 0500) and having a flying time of 5 hours or more, and is recommended for all other flights arriving during this period.

7.2.3 Process

7.2.3.1 Strategic Phase

Skyguide will generate a strategic sequence for all flights with a scheduled time of arrival (STA) between 0500 and 0600 (0400 and 0500) and will provide a strategic planning time frame for each flight, within which the landing time can be expected. The Operational Flight Plan shall take into account this Strategic Landing Time.

7.2.3.2 Tactical Phase

Aircraft operators of flights expected to arrive between 0500 and 0600 (0400 and 0500) shall provide the estimated time over (ETO) of the last waypoint of the FPL before 0030 (2330). Skyguide will generate a provisional approach sequence and provide target times over (TTO) for all flights to the aircraft operators before 0100 (0000). The aircraft operators shall forward the information to the flight crews for the purpose of adapting their flight speed.

7.2.4 Further information

Aircraft operators planning flights with an arrival time during the above mentioned time frame shall contact istream.support@skyguide.ch for information and guidance on the process.

7.3 Restrictions on VEBIT SIDs RWY 16

7.3.1 Suspension of VEBIT SIDs RWY 16 during main arrival peak hours

Due to capacity constraints, the following restrictions apply daily between 0930 and 1045 (0830 and 0945): VEBIT SIDs RWY 16 are suspended. Aircraft requiring a VEBIT SID shall be ready and report to CLR DEL on 121.930 MHz before 0930 (0830) to depart from RWY 16 during the restricted time frame. If ready later, earliest start-up will be issued at 1045 (0945). Tactical re-routings after departure will not be granted and non-standard flight plans are not accepted.

7.3.2 VEBIT 1T SID RWY 16 not available for Boeing 777 aircraft

SID VEBIT 1T RWY 16 is not available for Boeing 777 aircraft. In case of VEBIT 4S is also not available, Boeing 777 with DEP on RWY 16 shall refile the flight plan via exit fix DEGES.

LSZH AD 2.21 NOISE ABATEMENT PROCEDURES

1. General

1.1 The following regulations are in force to avoid excessive aircraft noise in the populated areas in the vicinity of Zurich AP

Departures of subsonic aircraft not certified according to the noise standards of ICAO Annex 16, Volume 1, Part 2, Chapter 3 and of supersonic aircraft are not permitted. Exceptions may be granted by the airport authority.

DEV from published routes and procedures are only permitted if the safety of the ACFT is affected; subject to Art. 27 of the ordinance concerning the aviation infrastructure (OAI).

ACFT operators that are unable to comply with these regulations and procedures shall submit alternative procedures to Zurich Airport Authority.

1.2 Auxiliary Power Units (APU)

1.2.1 All stands

Primarily, the stationary airport pneumatic and electrical service units shall be used. Alternatively, mobile units shall be used.

1.2.2 The APU shall only be started:

- to start engine, but no earlier than 10 MIN before the target off-block time (TOBT).
- if the stationary or mobile units are not available or unserviceable for specific aircraft types. In that case, the APU shall be started no earlier than:
 - 50 minutes before off-block time for aircraft Codes B and C
 - 70 minutes before off-block time for aircraft Codes D, E and F
 - 30 minutes before off-block time for GA sector 1
 and kept in operation no more than 20 minutes after the on-block time.
- if maintenance work on the ACFT makes it unavoidable; in that case the service period shall be kept as short as possible.
Exceptions have to be permitted by the Airport Authority.

2. Approaches

2.1 ILS/GLS approach:

The descent shall be arranged so as to maintain ENR configuration for as long as possible taking safety and ATC requirements into consideration. Speed reduction and extension of LDG gear and high lift devices are to be planned in such a way that the LDG configuration is established and the correct APP speed is reached shortly prior to or at 4 miles final.

2.2 Other approaches:

Visual circuits shall be flown at 3000 ft AMSL or HYR whenever visibility and BASE permits. Overflying of densely populated areas shall be avoided as far as possible.

2.3 German ordinance

2.3.1 Application:

MON - FRI: 0000 - 0600 and 2000 - 2359 (2300 - 0500 and 1900 - 2259)

SAT, SUN and German public HOL: 0000 - 0800 and 1900 - 2359 (2300 - 0700 and 1800 - 2259)

Remark: LDGs before 0500 (0400) are not allowed.

German Public Holidays	2025	2026	2027	2028	2029	2030
New Year	JAN 01	JAN 01	JAN 01	JAN 01	JAN 01	JAN 01
6th January	JAN 06	JAN 06	JAN 06	JAN 06	JAN 06	JAN 06
Good Friday	APR 18	APR 03	MAR 26	APR 14	MAR 30	APR 19
Easter Monday	APR 21	APR 06	MAR 29	APR 17	APR 02	APR 22
1st May	MAY 01	MAY 01	MAY 01	MAY 01	MAY 01	MAY 01
Ascension Day	MAY 29	MAY 14	MAY 06	MAY 25	MAY 10	MAY 30
Whit Monday	JUN 09	MAY 25	MAY 17	JUN 05	MAY 21	JUN 10
Corpus Christi Day	JUN 19	JUN 04	MAY 27	JUN 15	MAY 31	JUN 20
Day of German Unity	OCT 03	OCT 03	OCT 03	OCT 03	OCT 03	OCT 03
All Saints' Day	NOV 01	NOV 01	NOV 01	NOV 01	NOV 01	NOV 01
Christmas Day	DEC 25	DEC 25	DEC 25	DEC 25	DEC 25	DEC 25
Boxing Day	DEC 26	DEC 26	DEC 26	DEC 26	DEC 26	DEC 26