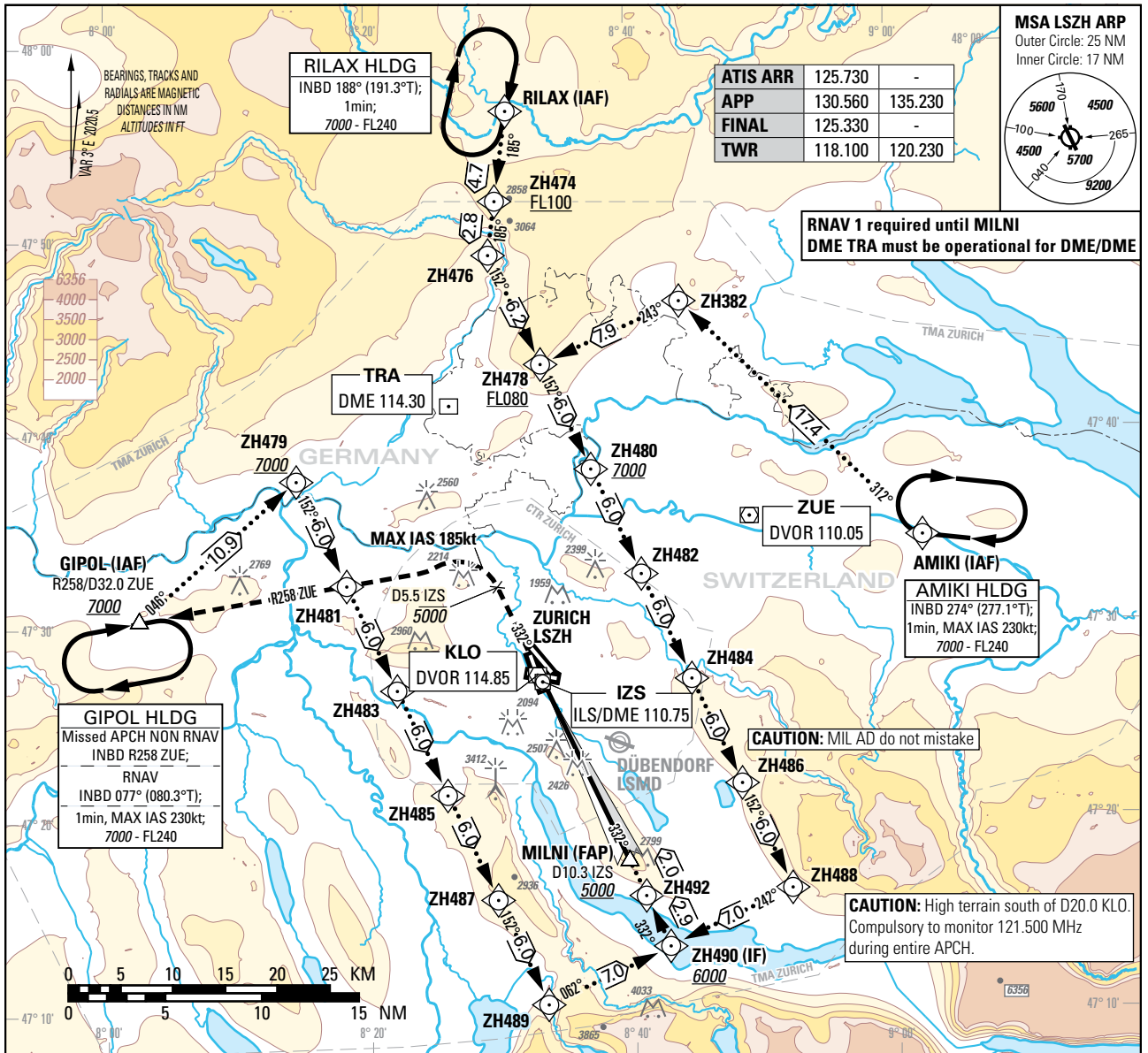


Instrument Approach Chart
(IAC) - ICAO

AD ELEV 1417ft

TRANSITION LEVEL by ATC
TRANSITION ALTITUDE 7000

ZURICH (LSZH)
ILS RWY 34

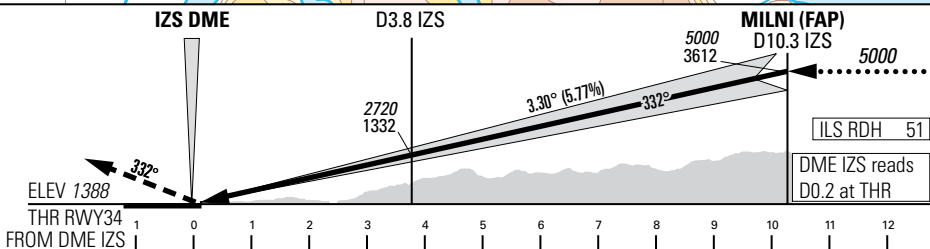


MSA LSZH ARP
Outer Circle: 25 NM
Inner Circle: 17 NM

ATIS ARR	125.730	-
APP	130.560	135.230
FINAL	125.330	-
TWR	118.100	120.230

RNAV 1 required until MILNI
DME TRA must be operational for DME/DME

MISSED APPROACH
Initial climb clearance 5000.
Climb straight ahead. At D5.5 IZS past the station turn left (MAX IAS 185kt during turn) and intercept R258 ZUE. Continue climb to 7000. Proceed to GIPOL.
Cross D5.5 IZS at or below 5000.
Cross GIPOL at or above 7000.



Missed APCH climb gradient requirement	STRAIGHT-IN APPROACH								
	A	B	C	D	D _L				
OBSTACLE CLEARANCE ALTITUDE (HEIGHT)									
2.5%	1592 (204)	1602 (214)	1615 (227)	1625 (237)					
2.8% to 2200	1543 (155)	1552 (164)	1560 (172)	1571 (183)	1572 (184)				
DECISION ALTITUDE (HEIGHT)									
2.8% to 2200	1588 (200)								
IZS DME	2	3	4	5	6	7	8	9	10
RECOMMENDED CROSSING ALTITUDE (HEIGHT)	2090 (700)	2440 (1050)	2790 (1400)	3140 (1750)	3490 (2100)	3840 (2450)	4190 (2800)	4540 (3150)	4890 (3500)

ROD	GS kt	90	110	130	150
	FT/MIN	526	642	759	876
NOTE Level assignments will be issued by ATC.					

COR: CTR & TMA LSZH, PBN box, editorial (WEF 20MAR2025)

THIS PAGE INTENTIONALLY LEFT BLANK