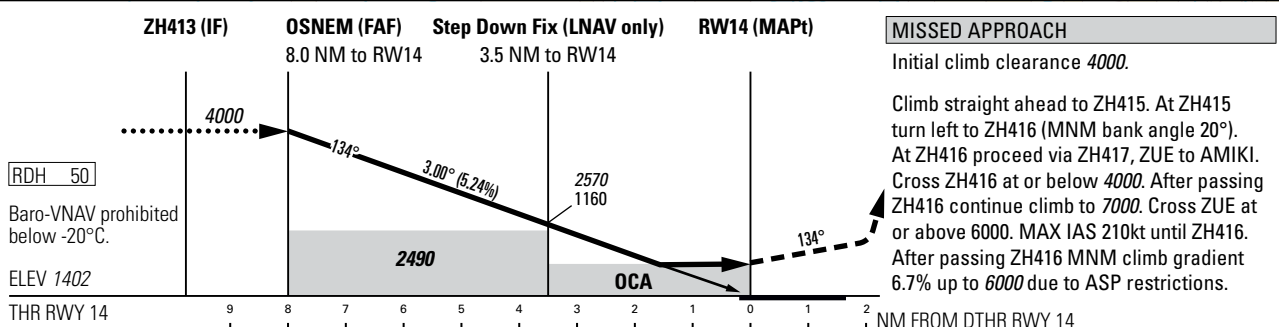
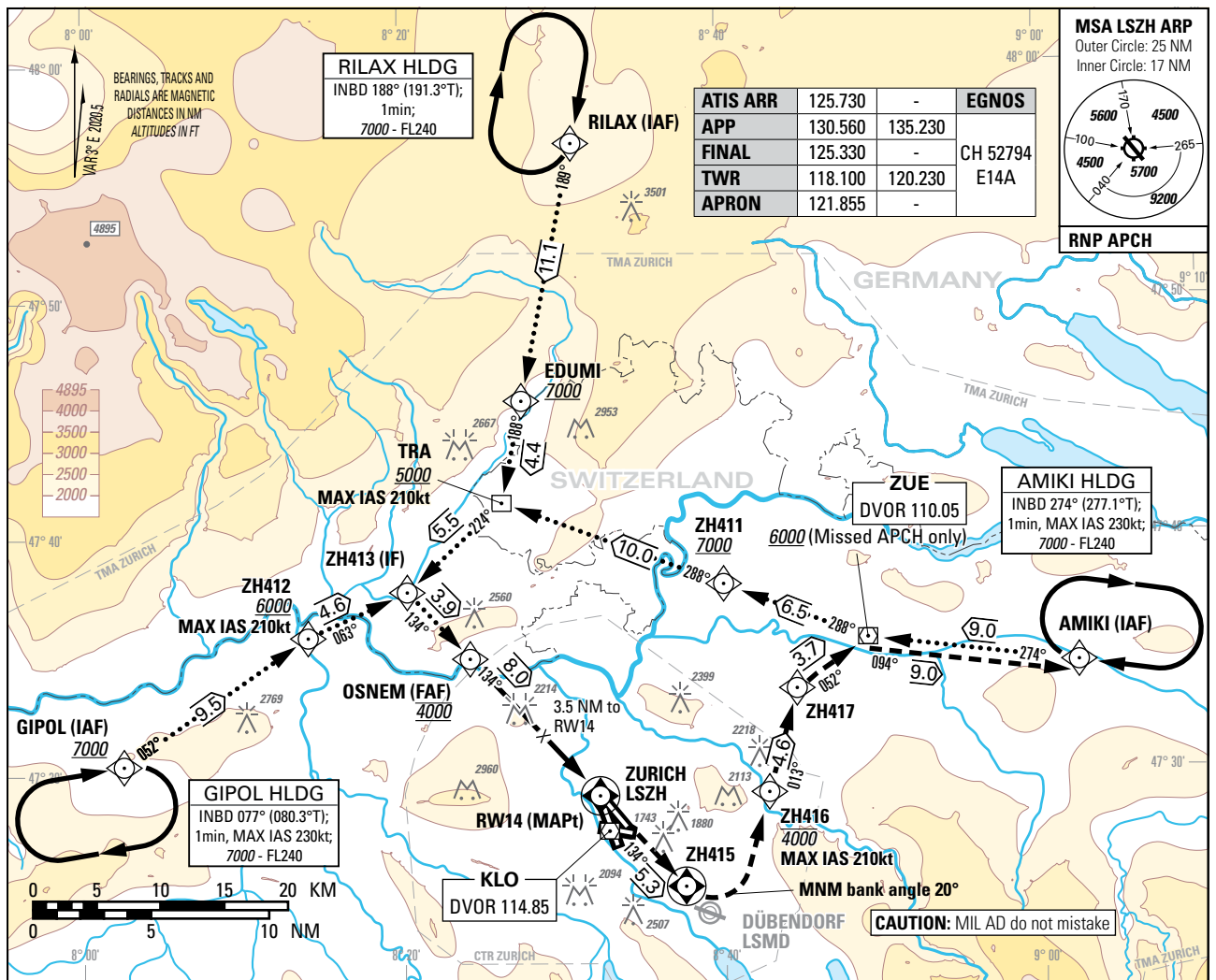


Instrument Approach Chart
(IAC) - ICAO

AD ELEV 1417ft

TRANSITION LEVEL by ATC
TRANSITION ALTITUDE 7000

ZURICH (LSZH)
RNP RWY 14



OBSTACLE CLEARANCE ALTITUDE (HEIGHT)		A	B	C	D				
STRAIGHT-IN	LNAV	2010 (610)							
	LNAV/VNAV	1880 (480)	1890 (490)	1910 (510)	1940 (540)				
	LPV CAT I	1553 (151)	1562 (160)	1573 (171)	1586 (184)				
DECISION ALTITUDE (HEIGHT)		A	B	C	D				
STRAIGHT-IN	LPV CAT I	1602 (200)							
DIST THR		8	7	6	5	4	3	2	1
recommended CROSSING ALT		4000	3680	3360	3040	2730	2410	2090	1770
recommended CROSSING HGT		2600	2280	1960	1640	1320	1000	690	370

ROD	GS kt	90	110	130	150
	FT/MIN	478	584	690	796

CAUTION
From 1.0 NM before THR 14 Visual Segment Surface (VSS) penetrated by trees up to 1600ft AMSL (LNAV & LNAV/VNAV only).

Input data

Operation Type	0
SBAS Provider	1 (EGNOS)
Airport Identifier	LSZH
Runway	14
Runway Letter	0 (None)
Approach Performance Designator	0
Route Indicator	
Reference Path Data Selector	0
Reference Path Identifier	E14A
LTP/FTP Latitude	472855.5305N
LTP/FTP Longitude	0083209.8680E
LTP/FTP Ellipsoidal Height (metres)	474.7
FPAP Latitude	472740.6480N
Delta FPAP Latitude (seconds)	-74.8825
FPAP Longitude	0083352.0595E
Delta FPAP Longitude (seconds)	102.1915
Threshold Crossing Height	15.0
TCH Units Selector	1 (meters)
Glidepath Angle (degrees)	3.00
Course Width (metres)	105.00
Length Offset (metres)	0
HAL (metres)	40.0
VAL (metres)	35.0

Output data

Data Block	10 08 1A 13 0C 0E 00 00 01 34 31 05 D5 89 60 14 18 CD A9 03 8B 26 FB B6 FD 5F 1E 03 2C 81 2C 01 64 00 C8 AF 60 6A BC CE
Calculated CRC Value	606ABCCE
Supplied CRC Value	606ABCCE
Comparison Result	OK