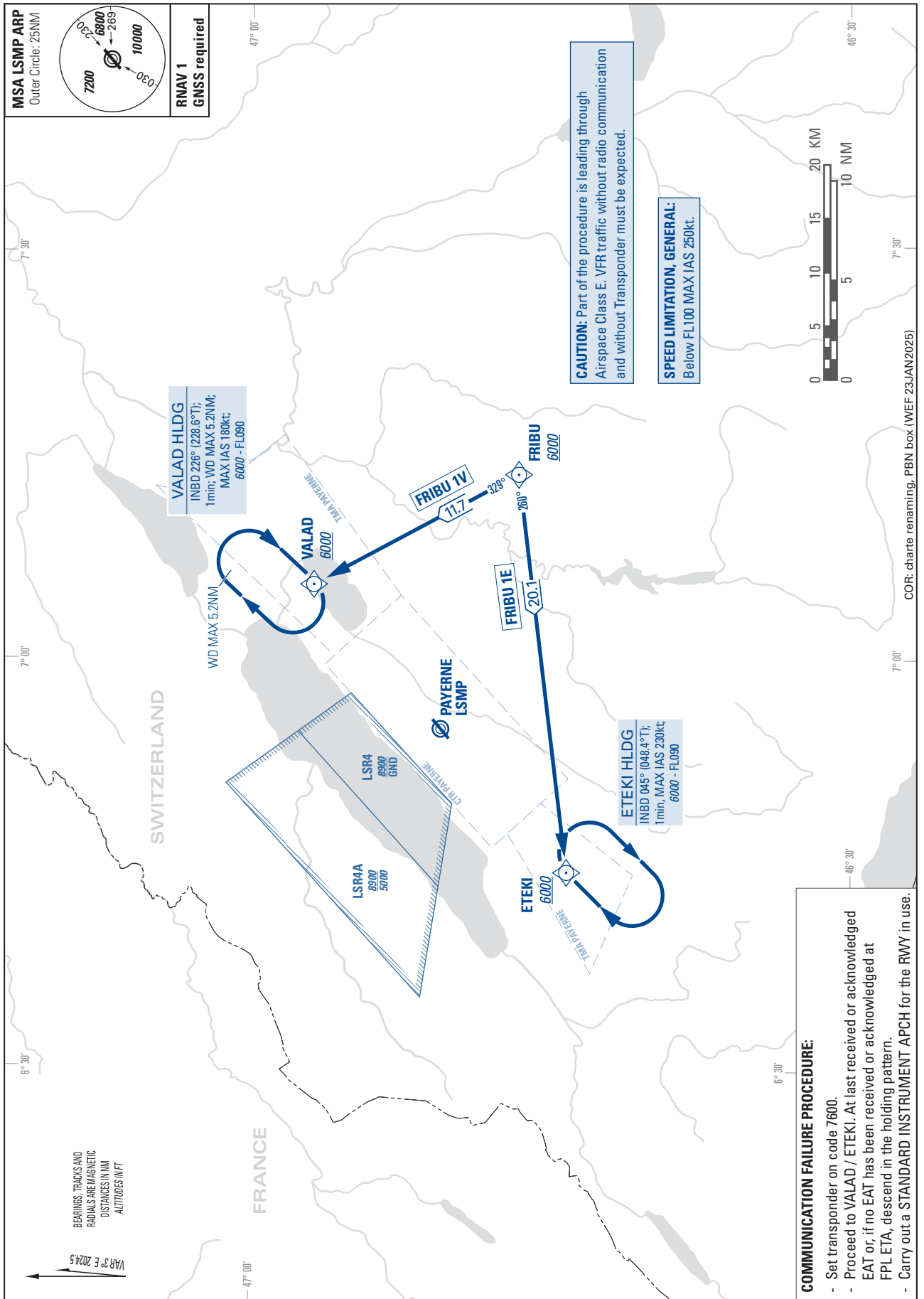


STANDARD ARRIVAL CHART -
INSTRUMENT (STAR) - ICAO

TRANSITION LEVEL by ATC
TRANSITION ALTITUDE 6000

PAYERNE (LSMP)
RNAV RWY 05/23

FRIBU 1E FRIBU 1V



THIS PAGE INTENTIONALLY LEFT BLANK