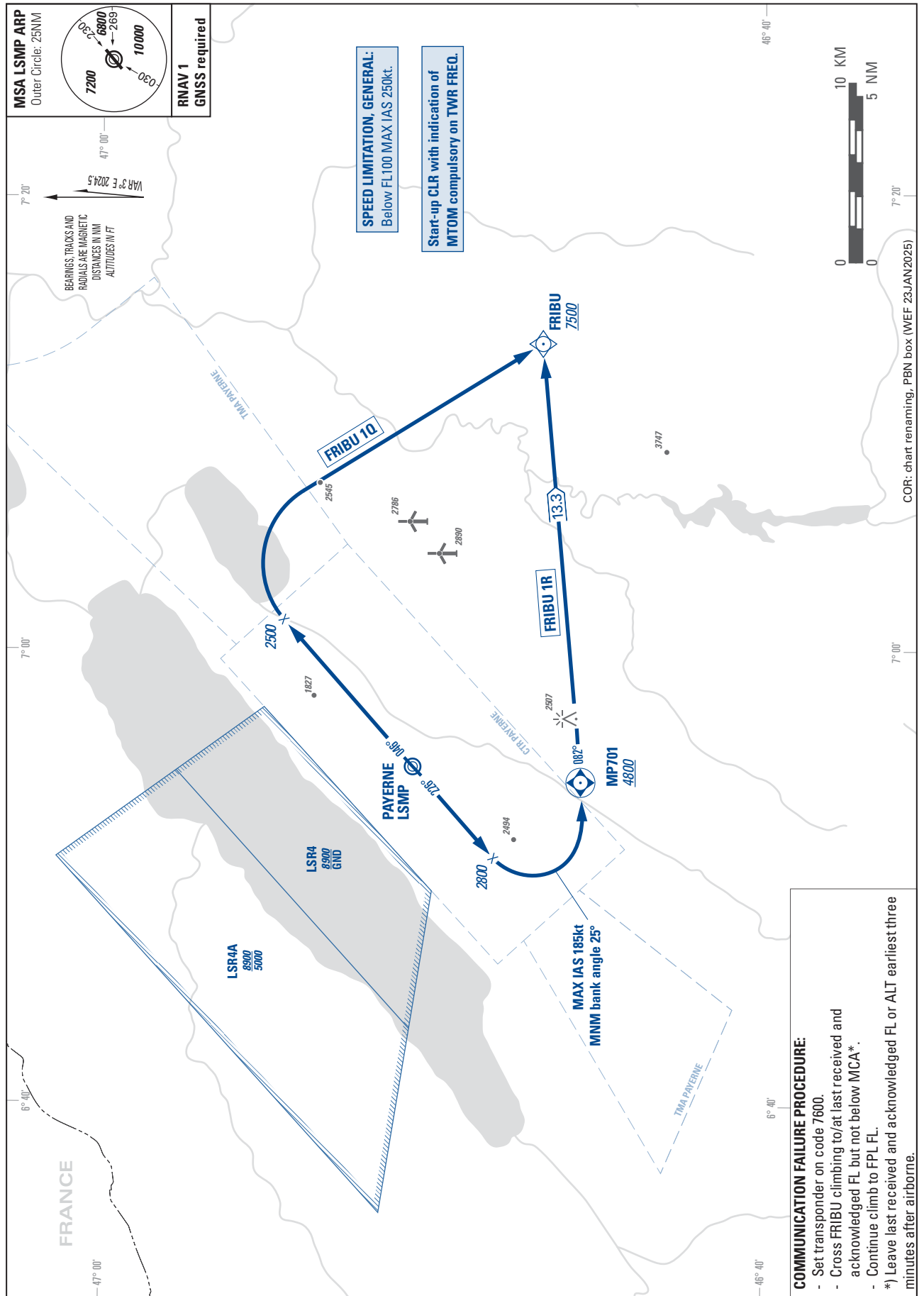


STANDARD DEPARTURE CHART -
INSTRUMENT (SID) - ICAO

TRANSITION LEVEL by ATC
TRANSITION ALTITUDE 6000

PAYERNE (LSMP)
RNAV RWY 05/23
FRIBU 1Q FRIBU 1R



MSA LSMP ARP
Outer Circle: 25NM

7200
6800
2689
10000

RNAV 1
GNSS required

SPEED LIMITATION, GENERAL:
Below FL100 MAX IAS 250kt.

Start-up CLR with indication of
MTOM compulsory on TWR FREQ.

COMMUNICATION FAILURE PROCEDURE:

- Set transponder on code 7600.
- Cross FRIBU climbing to/at last received and acknowledged FL but not below MCA*.
- Continue climb to FPL FL.
- Leave last received and acknowledged FL or ALT earliest three minutes after airborne.

THIS PAGE INTENTIONALLY LEFT BLANK