

STANDARD ARRIVAL CHART -
INSTRUMENT (STAR) - ICAO

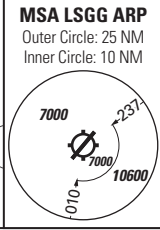
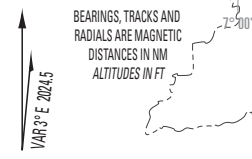
TRANSITION LEVEL by ATC
TRANSITION ALTITUDE 7000

GENEVA (LSGG)
RNAV RWY 04

BENOT 1N BENOT 1P FRIBU 1P ULMES 1N ULMES 1P

COMMUNICATION FAILURE PROCEDURE

- Set transponder on code 7600.
- If on final intercept or cleared for the approach, continue as instructed and follow the IAC.
- In any other case, proceed direct to GEVEA at last assigned and acknowledged FL.
- When in the GEVEA HLDG pattern descend or climb to FL100.
- If RWY 04 is in use, leave GEVEA HLDG at FL100 and proceed via PITOM, GG502 (MAX IAS 220kt) to INDIS and carry out an instrument approach according to IAC. Cross PITOM at or above FL080, GG502 at or above 7000.
- If RWY 22 is in use, leave GEVEA HLDG at FL100 and proceed via GG525, GG512 (MAX IAS 220kt) to SAPRE and carry out an instrument approach according to IAC. Cross GG525 at or above FL080, GG512 at or above 7000.
- For ACFT equipped with onboard telephone, dial +41 22 798 7600 and mention last RTF channel used.



RNAV 1
GNSS or DME/DME/IRU required.

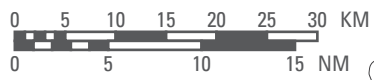
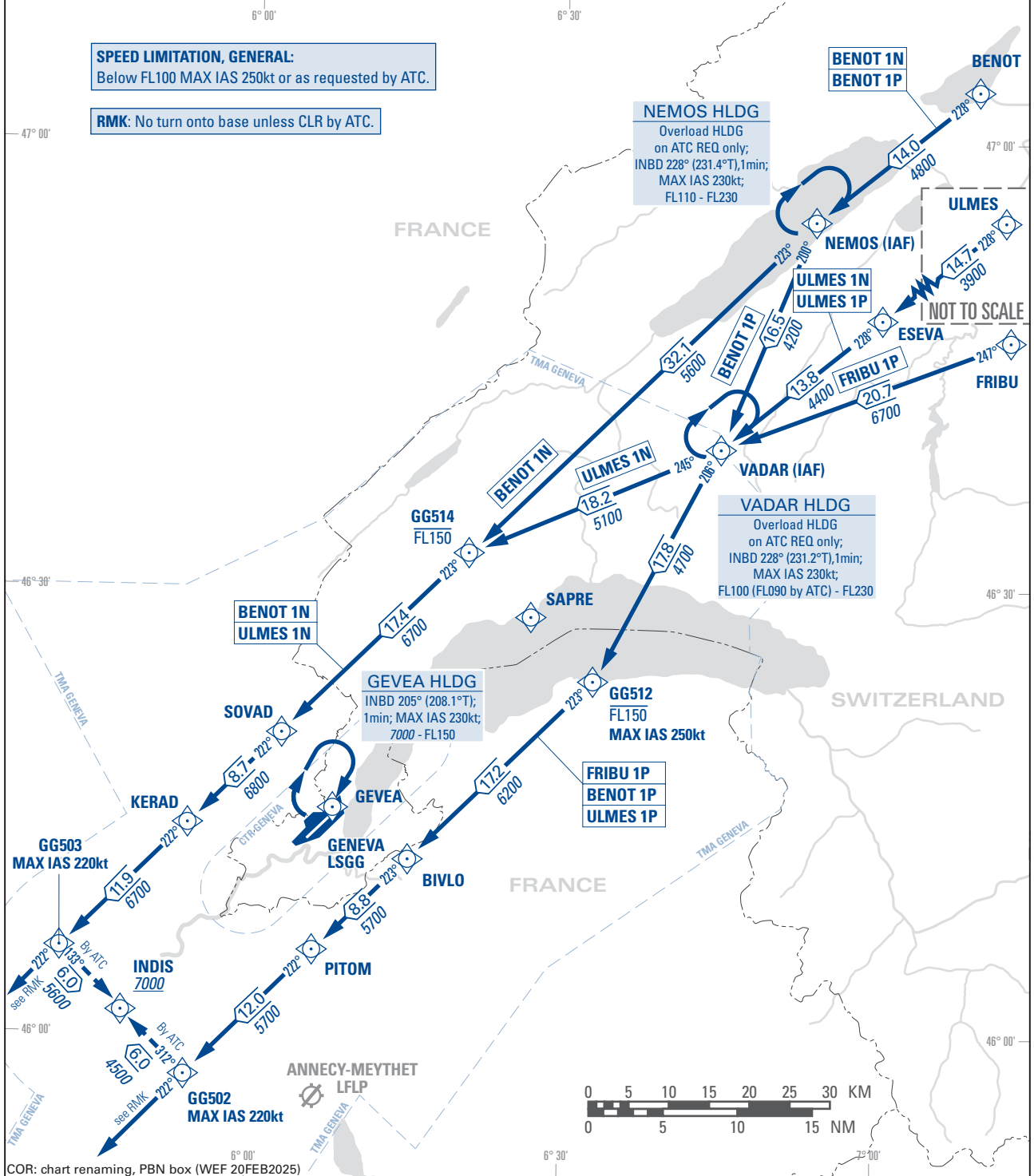
SPEED LIMITATION, GENERAL:
Below FL100 MAX IAS 250kt or as requested by ATC.

RMK: No turn onto base unless CLR by ATC.

NEMOS HLDG
Overload HLDG
on ATC REQ only;
INBD 228° (231.4°T), 1min;
MAX IAS 230kt;
FL110 - FL230

VADAR HLDG
Overload HLDG
on ATC REQ only;
INBD 228° (231.2°T), 1min;
MAX IAS 230kt;
FL100 (FL090 by ATC) - FL230

GEVEA HLDG
INBD 205° (208.1°T);
1min; MAX IAS 230kt;
7000 - FL150



COR: chart renaming, PBN box (WEF 20FEB2025)

THIS PAGE INTENTIONALLY LEFT BLANK