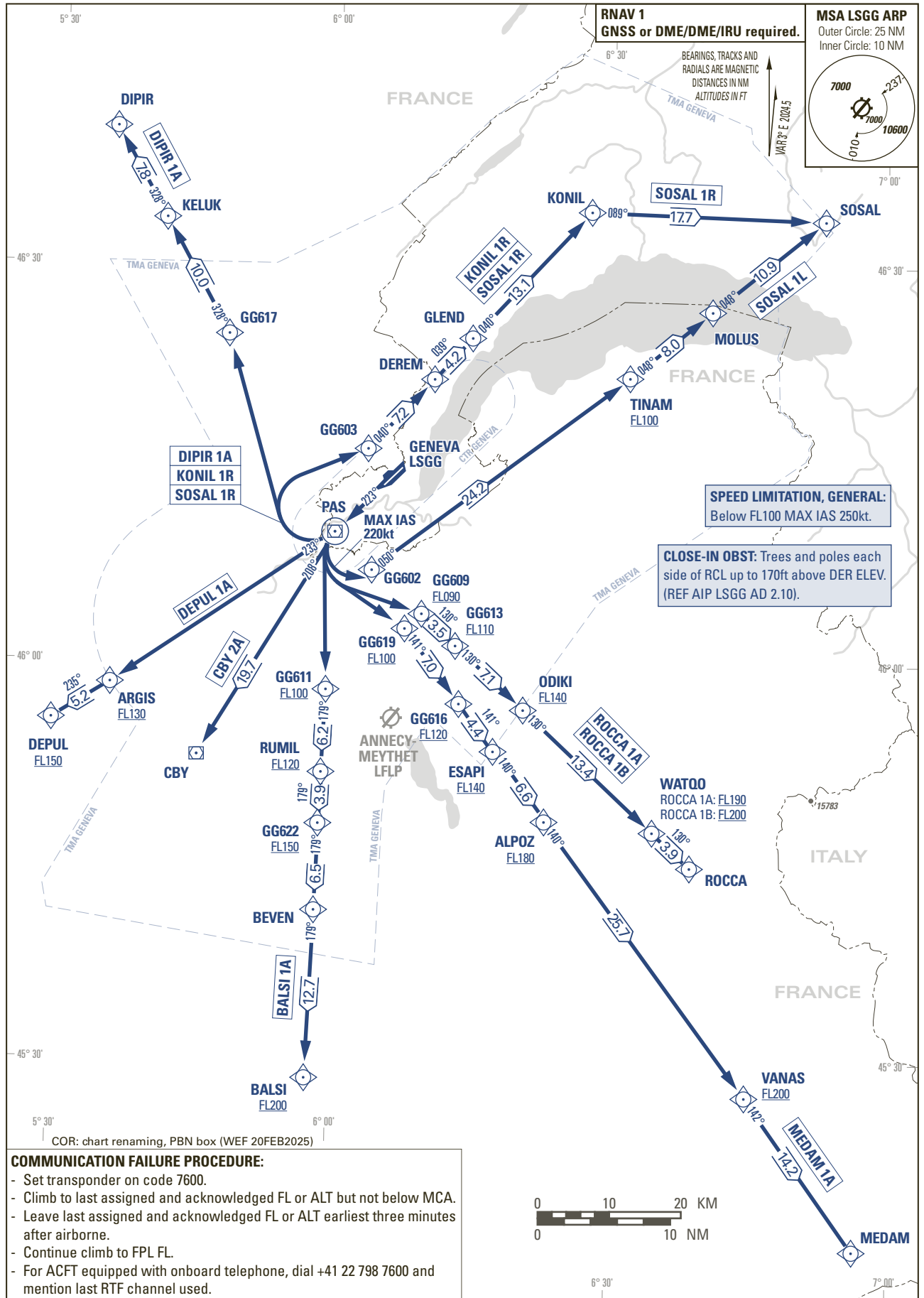


STANDARD DEPARTURE CHART -
INSTRUMENT (SID) - ICAO

TRANSITION LEVEL by ATC
TRANSITION ALTITUDE 7000

GENEVA (LSGG)
RNAV RWY 22

BALSI 1A CBY 2A DEPUL 1A DIPIR 1A KONIL 1R MEDAM 1A ROCCA 1A/1B SOSAL 1L/1R



THIS PAGE INTENTIONALLY LEFT BLANK