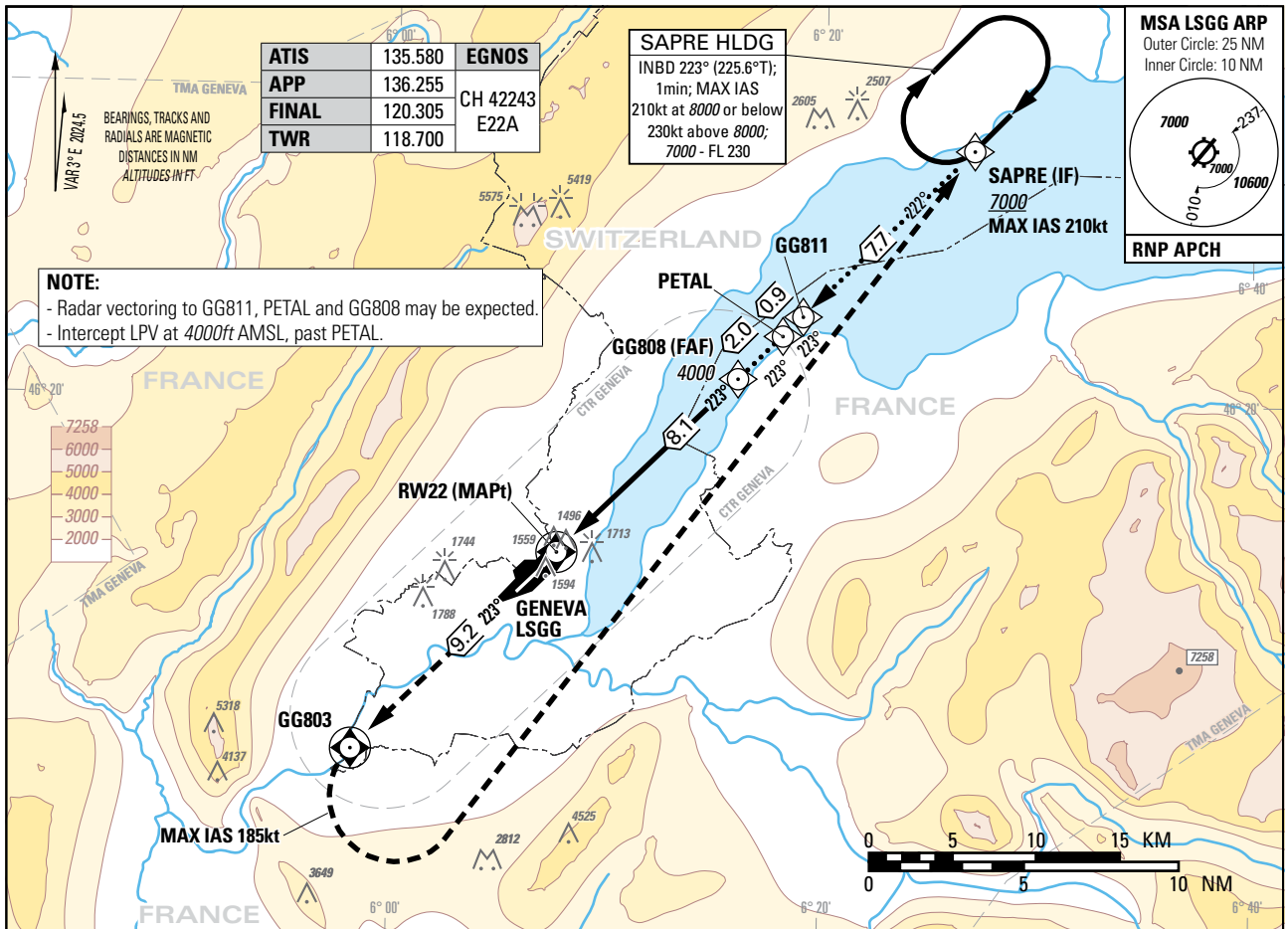


Instrument Approach Chart
(IAC) - ICAO

AD ELEV 1411ft

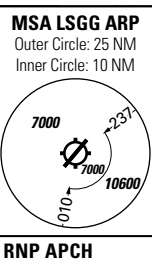
TRANSITION LEVEL by ATC
TRANSITION ALTITUDE 7000

GENEVA (LSGG)
RNP RWY 22

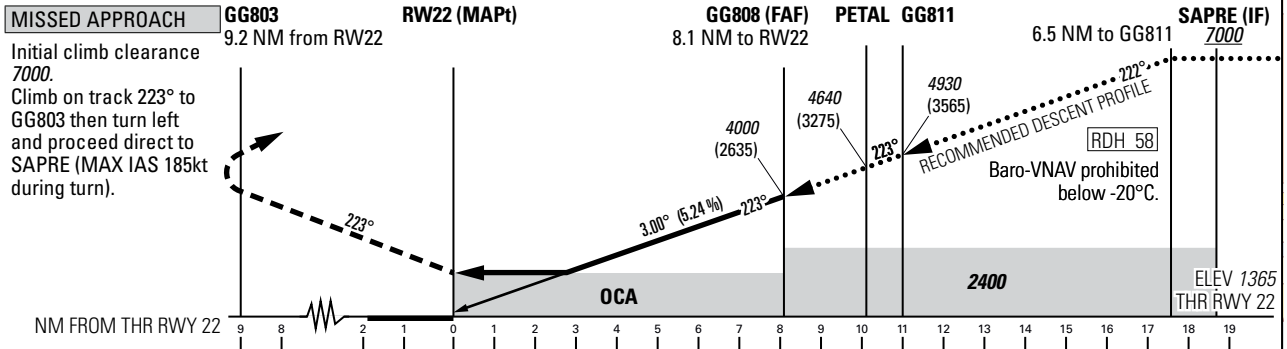


ATIS	135.580	EGNOS
APP	136.255	CH 42243
FINAL	120.305	E22A
TWR	118.700	

SAPRE HLDG
INBD 223° (225.6°T);
1min; MAX IAS
210kt at 8000 or below
230kt above 8000;
7000 - FL 230



NOTE:
- Radar vectoring to GG811, PETAL and GG808 may be expected.
- Intercept LPV at 4000ft AMSL, past PETAL.



Missed APCH climb gradient requirement	STRAIGHT-IN APPROACH				DIST RWY 22													
	A	B	C	D	2	4	6	8.1	10.1	11	12	14	16	17.5				
To Altitude	OCA(H) LPV CAT I				recommended crossing ALTITUDE (HEIGHT)													
2.5%	N/A	2005 (640)	2015 (650)	2025 (660)	2035 (670)	2060 (695)	2700 (1335)	3340 (1975)	4000 (2635)	4640 (3275)	4930 (3565)	5250 (3885)	5890 (4525)	6520 (5155)	7000 (5635)			
3.3%	4300	1532 (167)	1540 (175)	1550 (185)	1562 (197)	ROD												
		DA(H) LPV CAT I				GS kt					FT/MIN							
3.3%	4300	1565 (200)				90					478							
		OCA(H) LNAV/VNAV				110					584							
2.5%	N/A	2422 (1057)	2432 (1067)	2453 (1088)	2479 (1114)	130					690							
3.8%	4800	1706 (341)	1715 (350)	1731 (366)	1762 (397)	150					796							
		OCA(H) LNAV				CAUTION												
2.5%	N/A	2850 (1485)				0.8 NM before THR22 Visual Segment Surface (VSS) penetrated by power lines and trees up to 1527ft AMSL.												
3.8%	4800	1870 (505)				NOTE												
Circling ¹⁾²⁾	2100 (689)	2150 (739)	2400 (989)		¹⁾ Above aerodrome ELEV 1411ft, circling on request of ATC under special conditions and north of RWY only, speed (MAX IAS 180kt) and radius for category D as for category C aircraft. ²⁾ Circling must remain inside CTR at all times.													

COR: chart renaming, PBN box (WEF 20FEB2025)

Input data

Operation Type	0
SBAS Provider	1
Airport Identifier	LSGG
Runway	22
Runway Direction	0
Approach Performance Designator	0
Route Indicator	
Reference Path Data Selector	0
Reference Path Identifier	E22A
LTP/FTP Latitude	461501.2980N
LTP/FTP Longitude	0060737.2190E
LTP/FTP Ellipsoidal Height (metres)	465.9
FPAP Latitude	461331.4425N
Delta FPAP Latitude (seconds)	-89.8555
FPAP Longitude	0060525.3575E
Delta FPAP Longitude (seconds)	-131.8615
Threshold Crossing Height	58.0
TCH Units Selector	0
Glidepath Angle (degrees)	3.00
Course Width (metres)	105.00
Length Offset (metres)	0
HAL (metres)	40.0
VAL (metres)	35.0

Output data

Data Block	10 07 07 13 0C 16 00 00 01 32 32 05 64 37 D9 13 06 22 A1 02 33 26 01 42 FD D5 F9 FB 44 02 2C 01 64 00 C8 AF CF 2C FD EE
Calculated CRC Value	CF2CFDEE

Required Additional Data

ICAO Code	LS
LTP/FTP Orthometric Height (metres)	416.1
FPAP Orthometric Height (metres)	