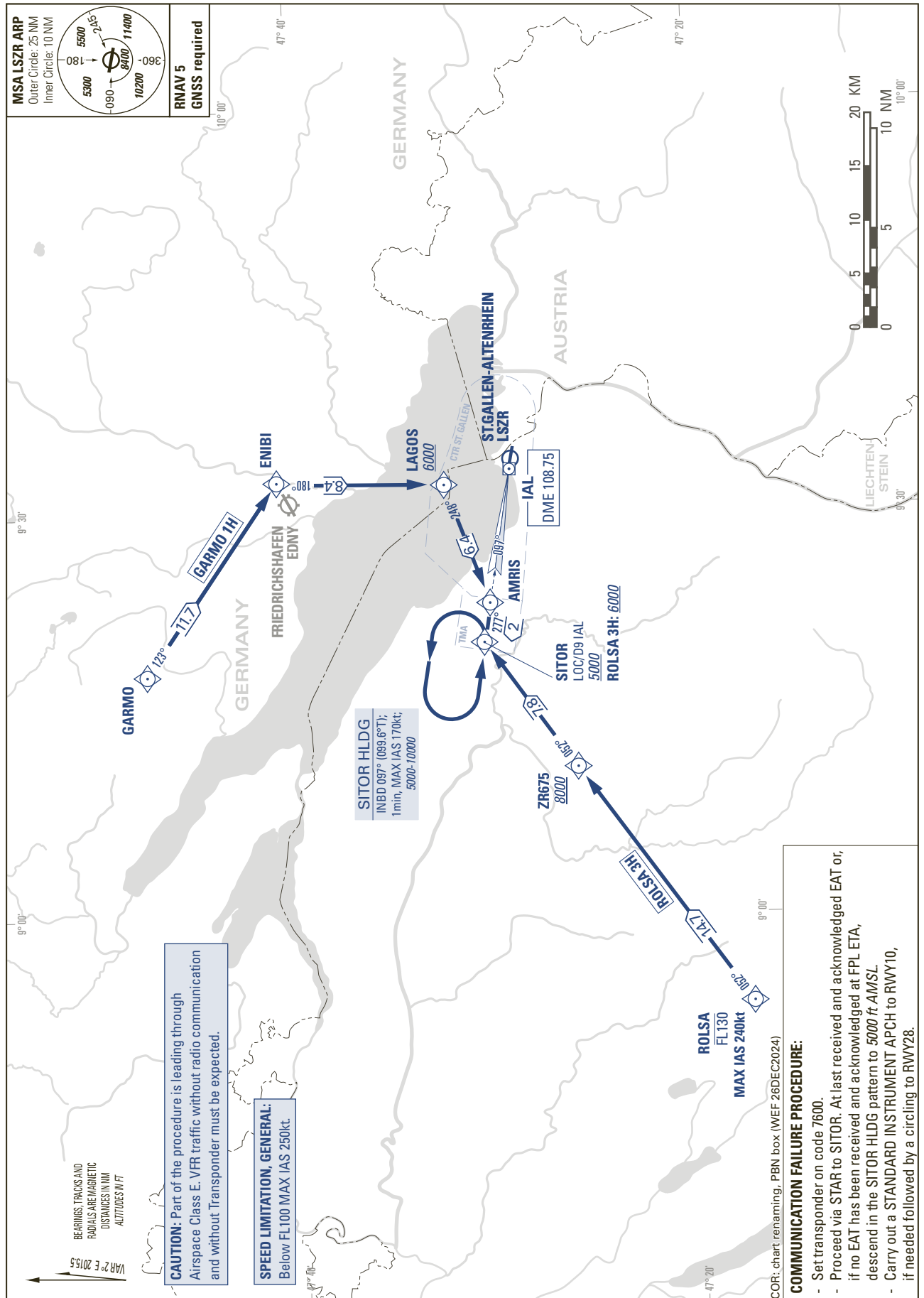


STANDARD ARRIVAL CHART -  
INSTRUMENT (STAR) - ICAO

TRANSITION LEVEL by ATC  
TRANSITION ALTITUDE 5000

ST. GALLEN-ALTENRHEIN (LSZR)  
RNAV SITOR (2/2)

GARMO 1H ROLSA 3H



THIS PAGE INTENTIONALLY LEFT BLANK