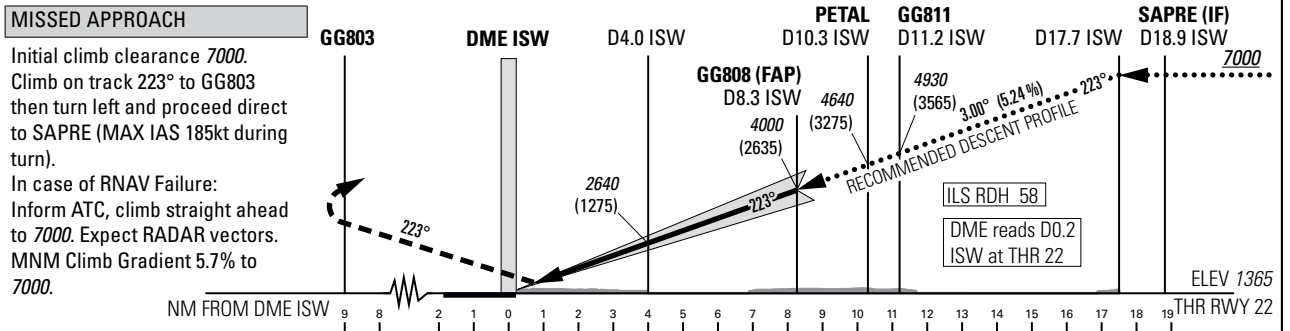
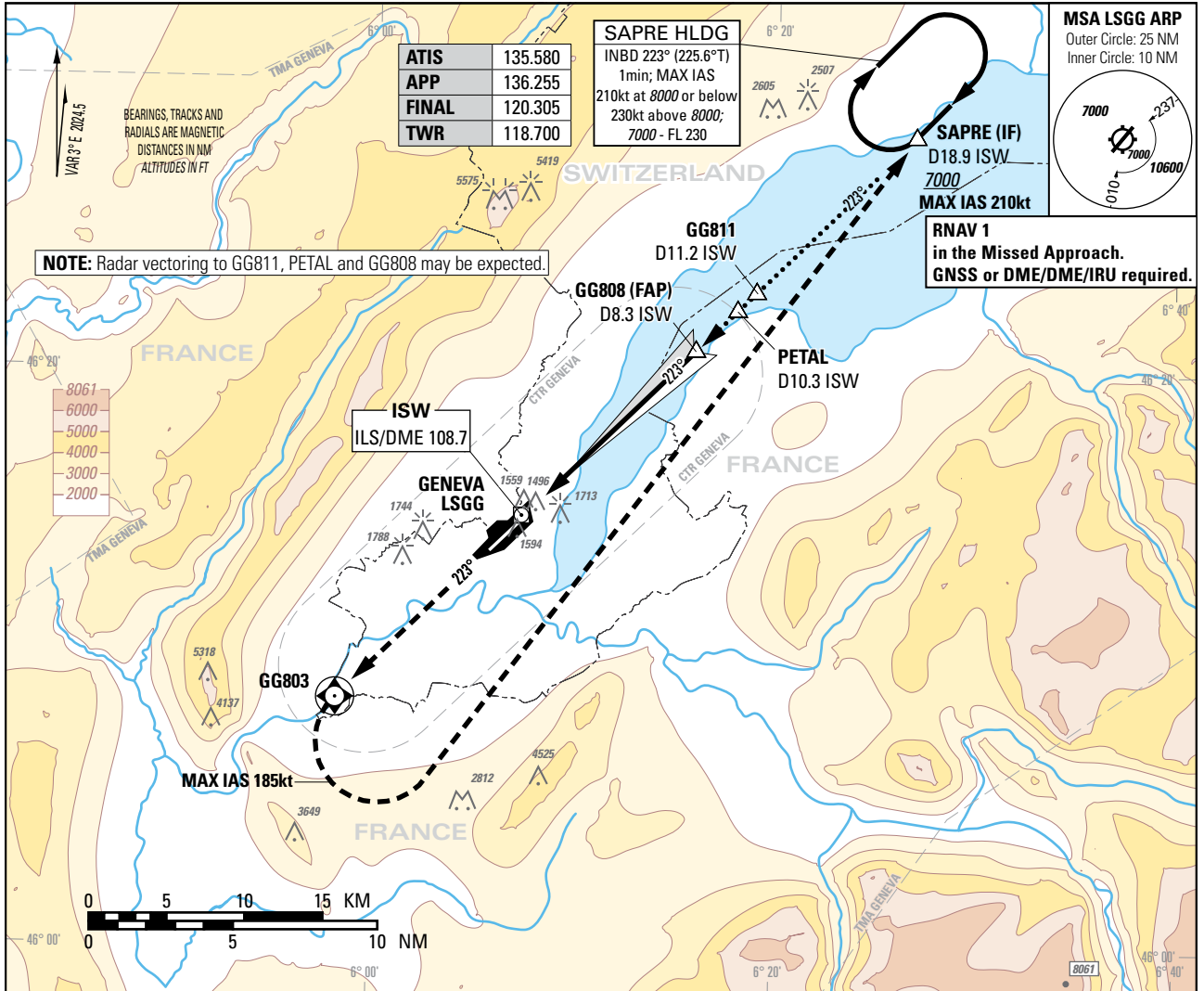


Instrument Approach Chart
(IAC) - ICAO

AD ELEV 1411ft

TRANSITION LEVEL by ATC
TRANSITION ALTITUDE 7000

GENEVA (LSGG)
ILS RWY 22
CAT II & CAT III



OBSTACLE CLEARANCE ALTITUDE (HEIGHT) ¹⁾					
Missed APCH climb gradient requirement		A	B	C	D
CAT I	pressure altimeter 2.5%	2420 (1055)	2430 (1065)	2440 (1075)	2450 (1085)
CAT I	pressure altimeter	1530 (165)	1538 (173)	1548 (183)	1560 (195)
CAT II	radio altimeter 4.2% to 4800	1432 (67)	1438 (73)	1449 (84)	1465 (100)
	radio altimeter and autopilot	1427 (62)	1436 (71)	1447 (82)	1464 (99)
DECISION ALTITUDE (HEIGHT) ¹⁾					
CAT I	pressure ²⁾ altimeter	1565 (200)			
	radio altimeter and autopilot ²⁾	1465 (100)			
Circling ^{3) 4)}		2100 (689)	2150 (739)	2400 (989)	

DIST DME ISW	2	4	6	8	8.3	10	12	14	16
	recommended CROSSING ALT	2000	2640	3280	3910	4000	4550	5190	5820
ROD	GS kt	90		110		130		150	
	FT/MIN	478		584		690		796	

NOTE

¹⁾ Above THR elevation 1365ft.
²⁾ Radio altimeter reading at CAT I DH 216ft, at CAT II DH 108ft, for lower operating minima (DH and RVR) PPR FOCA.
³⁾ Above aerodrome ELEV 1411ft, circling on request of ATC under special conditions and north of RWY only, speed (MAX IAS 180kt) and radius for category D as for category C aircraft.
⁴⁾ Circling must remain inside CTR at all times.

COR: chart renaming, PBN box (WEF 20FEB2025)

THIS PAGE INTENTIONALLY LEFT BLANK