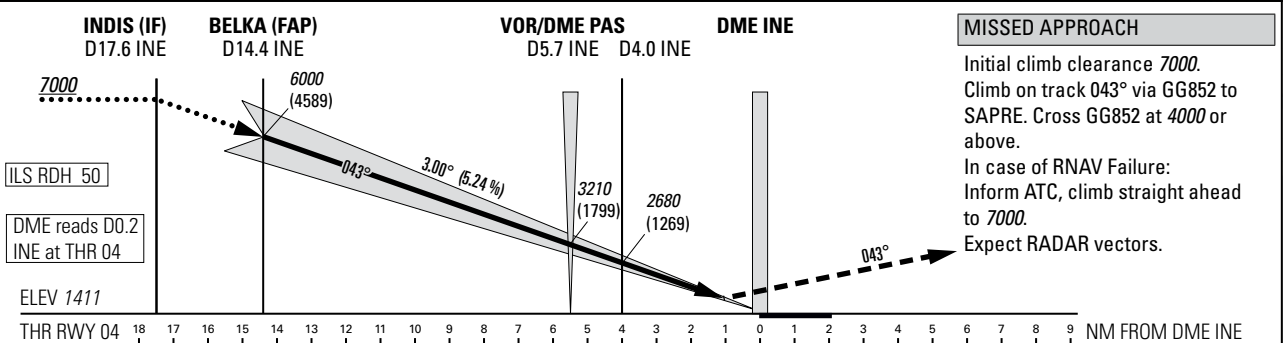
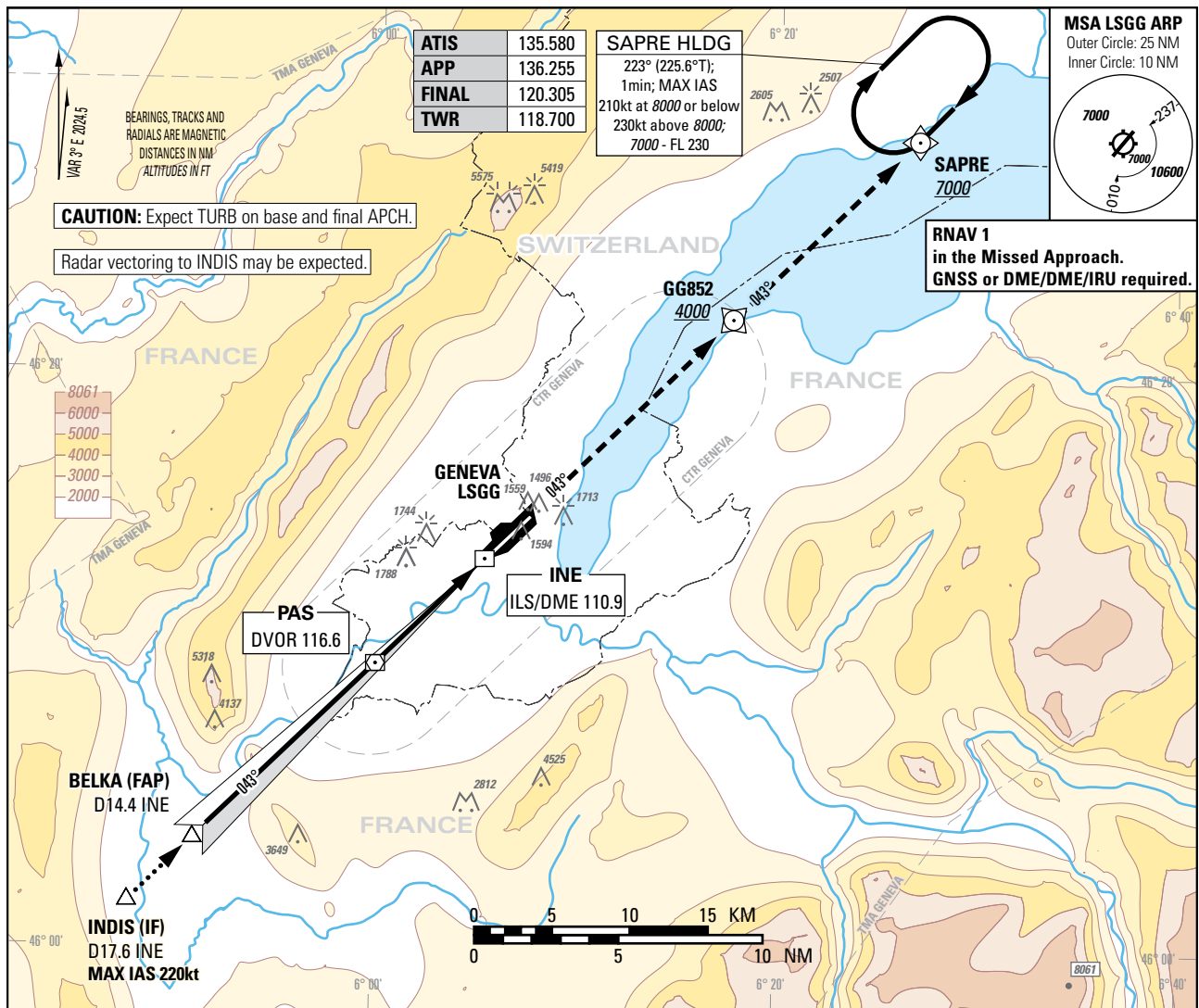


Instrument Approach Chart
(IAC) - ICAO

AD ELEV 1411ft

TRANSITION LEVEL by ATC
TRANSITION ALTITUDE 7000

GENEVA (LSGG)
ILS RWY 04



OBSTACLE CLEARANCE ALTITUDE (HEIGHT)					
		A	B	C	D
CAT I	pressure altimeter	1601 (190)	1609 (198)	1617 (206)	1627 (216)
	Straight-in approach				
DECISION ALTITUDE (HEIGHT)					
		A	B	C	D
CAT I	pressure altimeter	1611 (200)	1617 (206)	1627 (216)	
	Circling ¹⁾²⁾	2100 (689)	2150 (739)	2400 (989)	

DIST DME INE	16	14	12	10	8	6	4	2
recommended CROSSING ALT	6510	5870	5230	4590	3960	3320	2680	2050
ROD	GS kt	90	110	130	150			
	FT/MIN	478	584	690	796			

NOTE
¹⁾ Circling on request of ATC under special conditions and north of RWY only, speed (MAX IAS 180kt) and radius for category D as for category C aircraft.
²⁾ Circling must remain inside CTR at all times.

COR: chart renaming, PBN box (WEF 20FEB2025)

THIS PAGE INTENTIONALLY LEFT BLANK