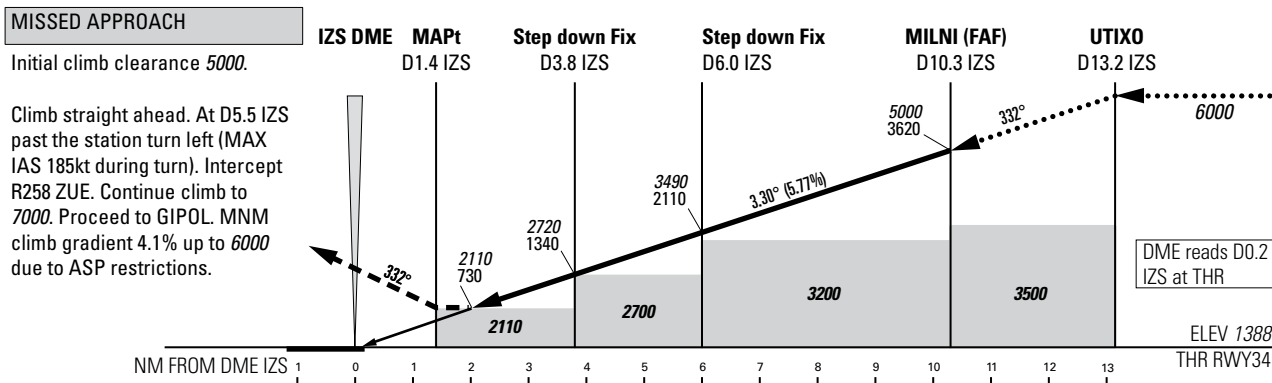
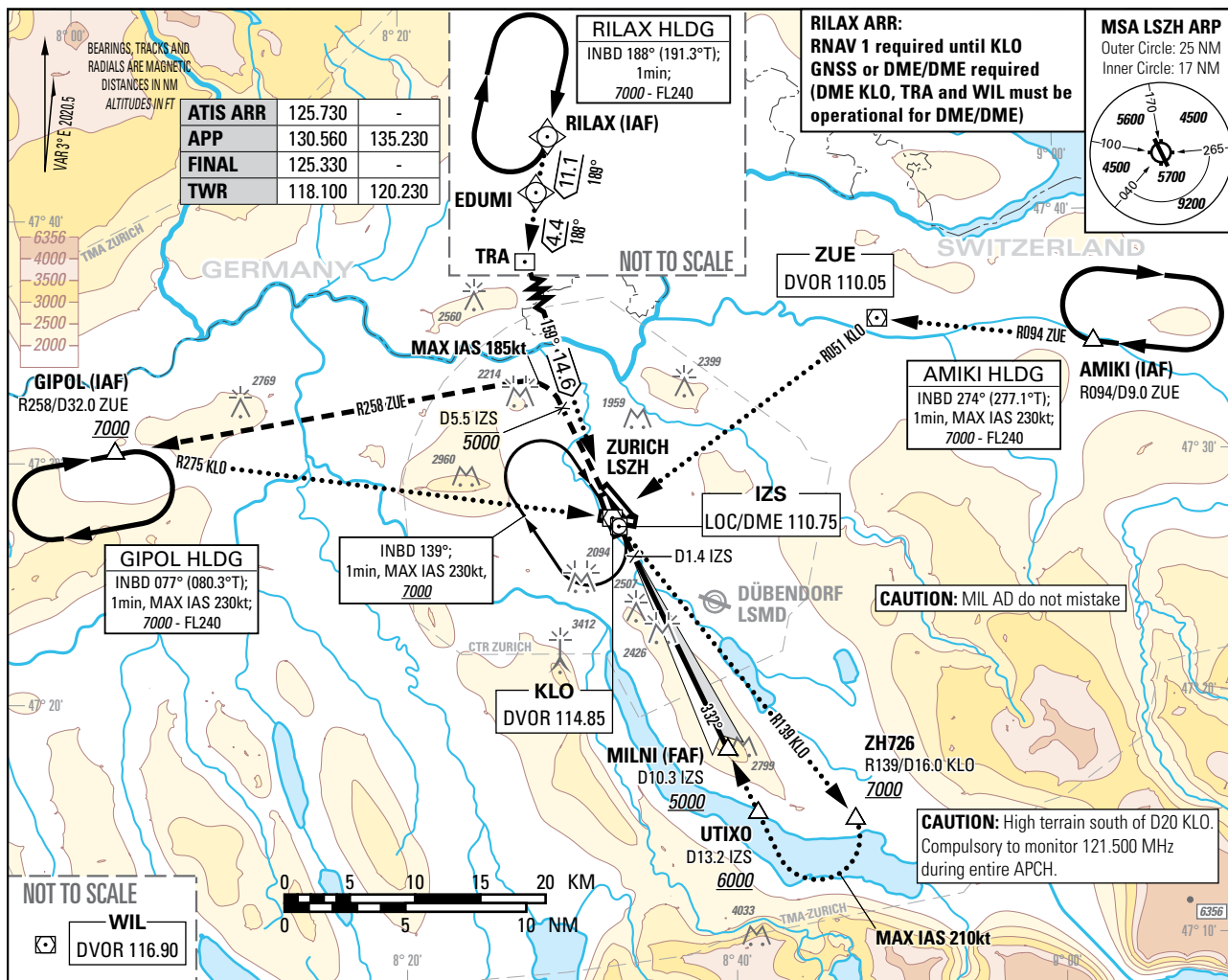


Instrument Approach Chart
(IAC) - ICAO

AD ELEV 1417ft

TRANSITION LEVEL by ATC
TRANSITION ALTITUDE 7000

ZURICH (LSZH)
LOC RWY 34



OBSTACLE CLEARANCE ALTITUDE (HEIGHT)	A				B				C				D				ROD	GS kt	90	110	130	150
	STRAIGHT-IN APPROACH																					
2110 (730)																FT/MIN	526	642	759	876		

IZS DME	2	3	4	5	6	7	8	9	10	11	12	13
RECOMMENDED CROSSING ALTITUDE (HEIGHT)	2090 (710)	2440 (1060)	2790 (1410)	3140 (1760)	3490 (2110)	3840 (2460)	4190 (2810)	4540 (3160)	4890 (3510)	5240 (3860)	5590 (4210)	5940 (4560)

COR: CTR & TMA LSZH, PBN box (WEF 20MAR2025)

THIS PAGE INTENTIONALLY LEFT BLANK