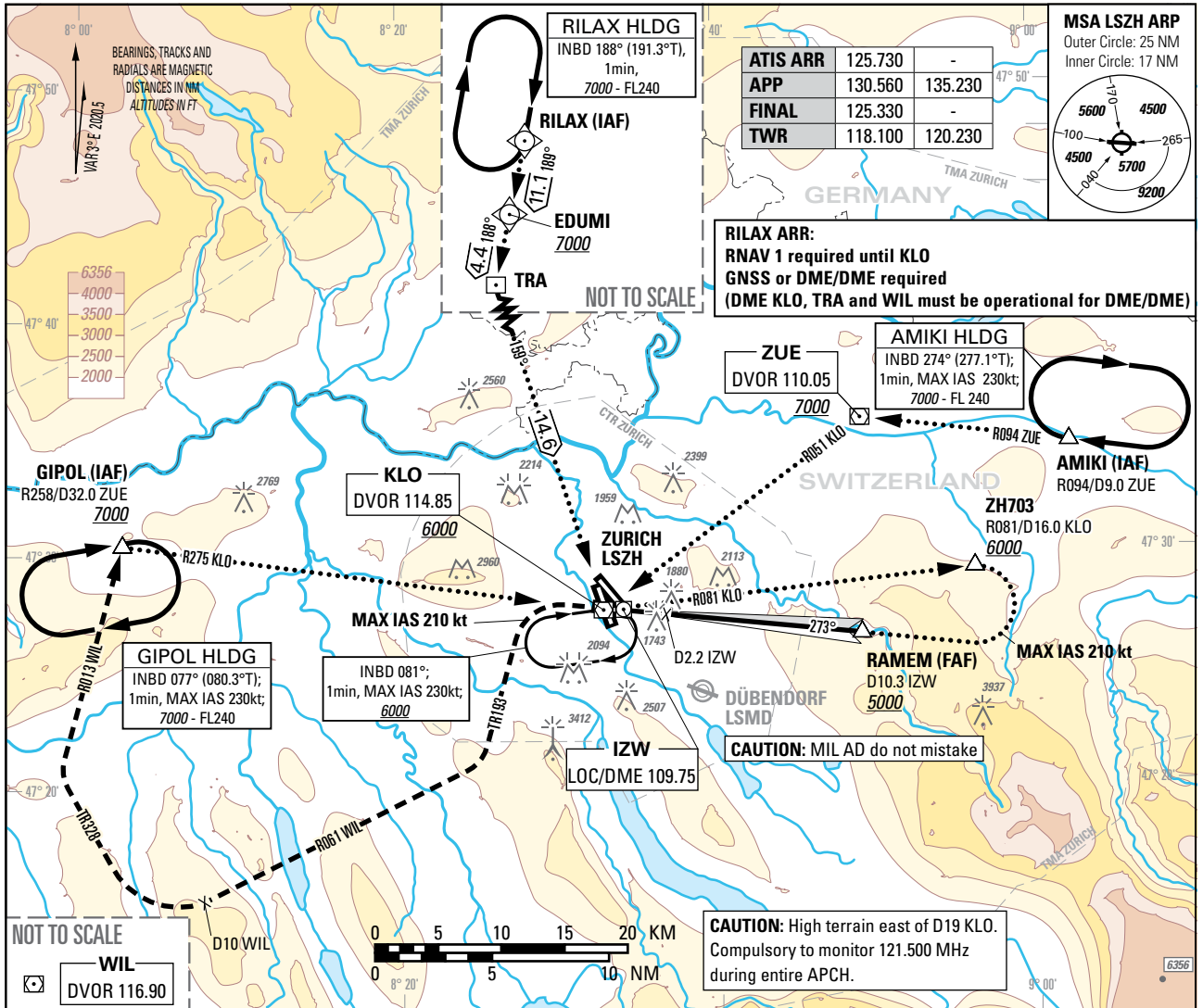


Instrument Approach Chart
(IAC) - ICAO

AD ELEV 1417ft

TRANSITION LEVEL by ATC
TRANSITION ALTITUDE 7000

ZURICH (LSZH)
LOC RWY 28

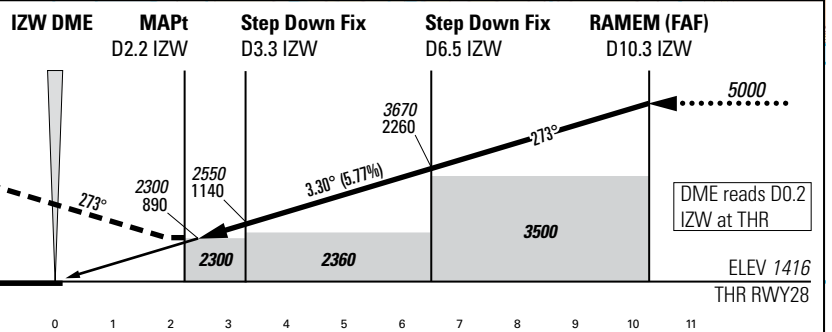


MISSED APPROACH

Initial climb clearance 4000.

Climb straight ahead. At D2.5 IZW past the station turn left (MAX IAS 210kt) on TR193. When established on TR193 continue climb to 7000. Intercept R061 to WIL. At D10.0 WIL to the station turn right. Establish TR328 to intercept R013 from WIL. Proceed to GIPOL. MNM climb gradient 4.5% up to 5900 due to ASP restrictions.

NM FROM DME IZW



Missed APCH climb gradient requirement	STRAIGHT-IN APPROACH			
	A	B	C	D
2.5%	OBSTACLE CLEARANCE ALTITUDE (HEIGHT) 2300 (890)			

ROD	GS kt	90	110	130	150
	FT/MIN	526	642	759	876

DME IZW	3	4	5	6	7	8	9	10
RECOMMENDED CROSSING ALTITUDE (HEIGHT)	2450 (1040)	2800 (1390)	3150 (1740)	3500 (2090)	3850 (2440)	4200 (2790)	4550 (3140)	4900 (3490)

CAUTION

- Do not confuse RWY32 with RWY28. Bright floodlight slightly N of APCH at D0.7 IZW.
- Expect turbulences on short final during south-westerly winds.
- 0.4NM BFR THR28 visual segment surface (VSS) penetrated by trees up to 1496ft AMSL.

REMARK

- Obstacle limitation and restriction according to non-instrument RWY criteria.
- LOC28 signal fulfils ICAO Annex 10.

COR: CTR & TMA LSZH, editorial (WEF 20MAR2025)

THIS PAGE INTENTIONALLY LEFT BLANK