

ENROUTE CHART - ICAO

Switzerland - LSAS

Data WEF 31 OCT 2024

Route Elements

- General Label for an ATS Route
- Route Designator
- Minimum Altitude in ft AMSL or in Flight Level
- Magnetic and True Track in Degree
- Distance in Nautical Miles between Points
- Both and One Direction Route
- Cruising Level
- O/R and COMP reporting or fly-by (RNAV) Point
- Point Designator

Navigation Aids

O/R and COMP reporting or fly-by (RNAV)

- VOR
- VOR/DME
- NDB
- Ident

Aeronautical Information

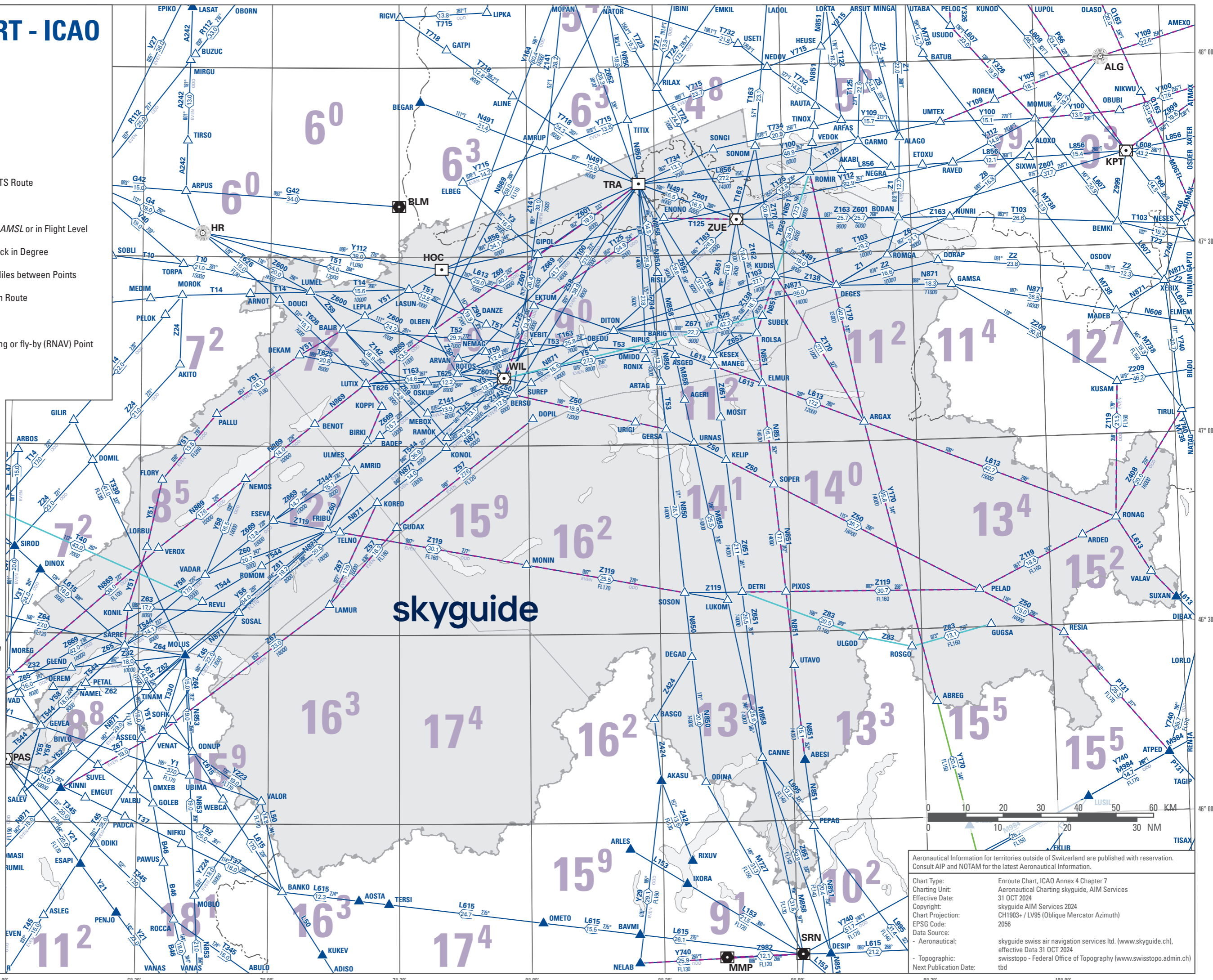
- UIR
- CTA, FIR
- Area Minimum Altitude = 7200 ft AMSL

Route Categories

- RNAV Route
- Non-RNAV Route

Conditional Routes

- CDR 1
- CDR 2
- CDR 3
- CDR 1 and CDR 2
- CDR 1 and CDR 3
- CDR 2 and CDR 3
- By ATC only



skyguide

Aeronautical Information for territories outside of Switzerland are published with reservation. Consult AIP and NOTAM for the latest Aeronautical Information.

Chart Type: Enroute Chart, ICAO Annex 4 Chapter 7
Charting Unit: Aeronautical Charting skyguide, AIM Services
Effective Date: 31 OCT 2024
Copyright: skyguide AIM Services 2024
Chart Projection: CH1903+ / LV95 (Oblique Mercator Azimuth)
EPSG Code: 2056
Data Source: - Aeronautical: skyguide swiss air navigation services ltd. (www.skyguide.ch), effective Date 31 OCT 2024
- Topographic: swisstopo - Federal Office of Topography (www.swisstopo.admin.ch)
Next Publication Date: tbd