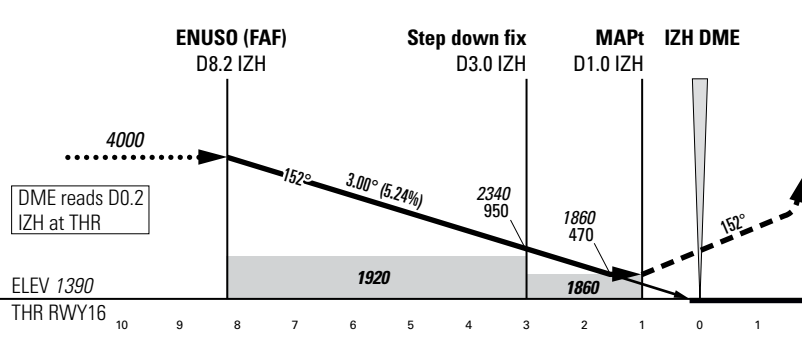
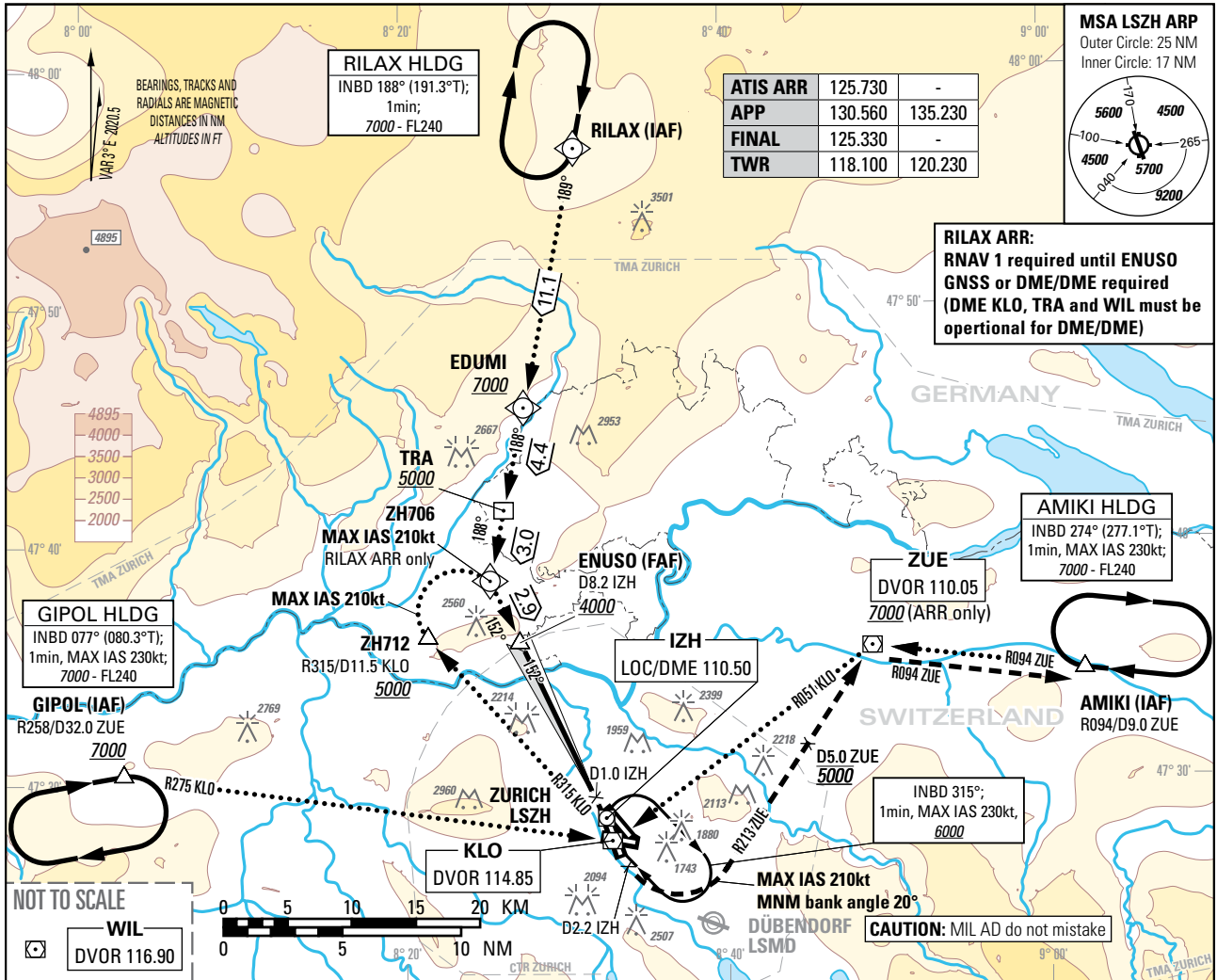


Instrument Approach Chart
(IAC) - ICAO

AD ELEV 1417ft

TRANSITION LEVEL by ATC
TRANSITION ALTITUDE 7000

ZURICH (LSZH)
LOC RWY 16



DIST DME IZH	8	7	6	5	4	3	2
recommended CROSSING ALT	3950	3630	3310	2990	2670	2350	2030
recommended CROSSING HGT	2560	2240	1920	1600	1280	960	640

ROD	GS kt	90	110	130	150
	FT/MIN	478	584	690	796

OBSTACLE CLERANCE ALTITUDE (HEIGHT)	A	B	C	D
STRAIGHT-IN APPROACH	1860 (470)			

COR: CTR & TMA LSZH, PBN box (WEF 20MAR2025)

THIS PAGE INTENTIONALLY LEFT BLANK