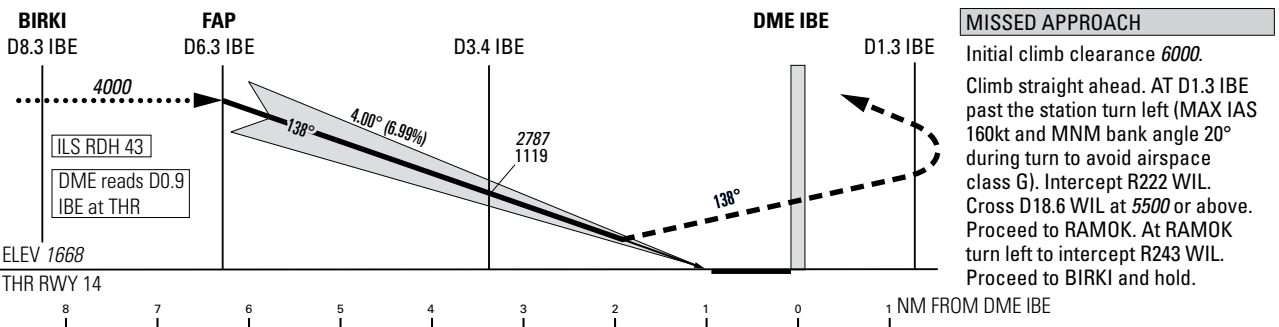
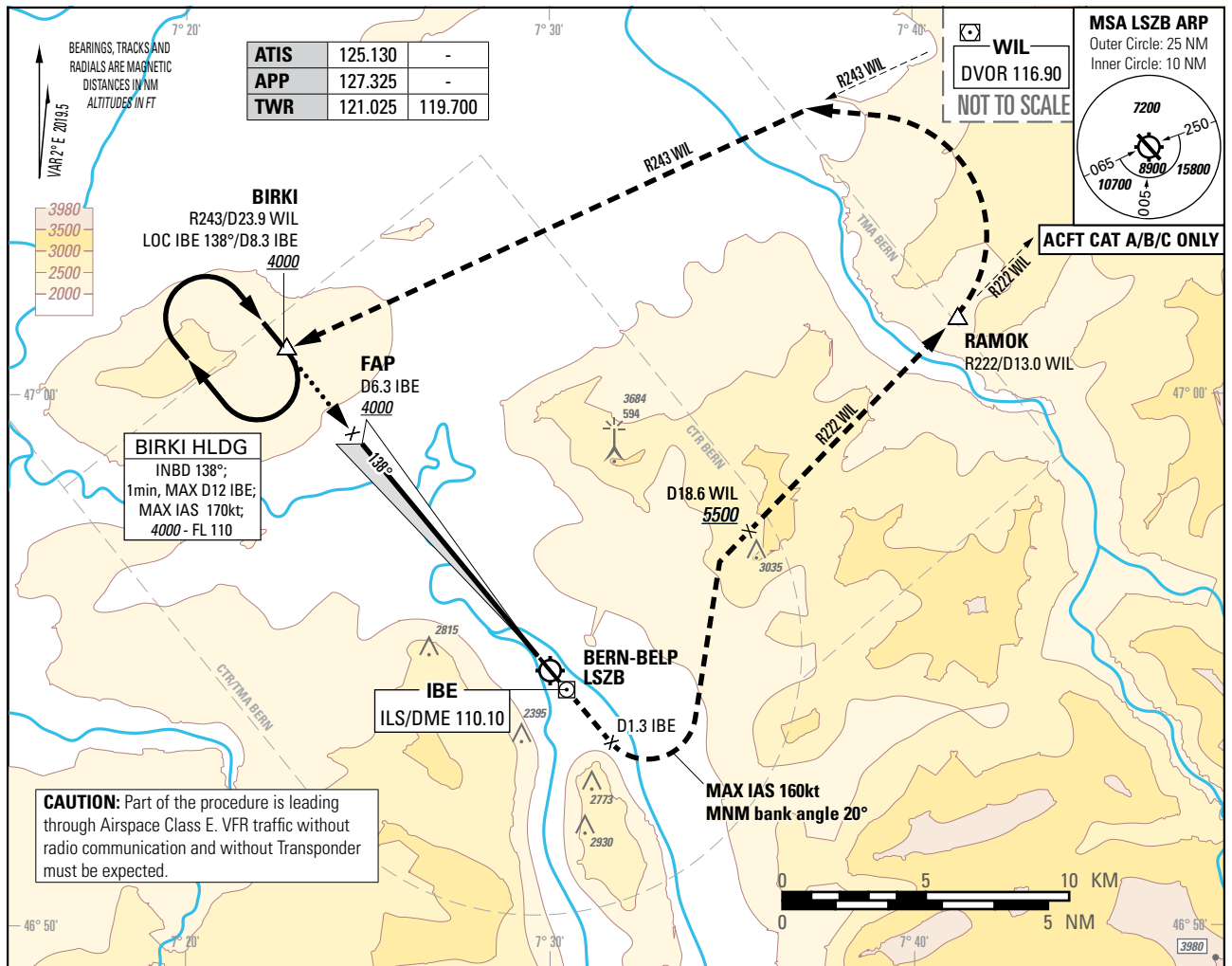


Instrument Approach Chart  
(IAC) - ICAO

AD ELEV 1675ft

TRANSITION LEVEL by ATC  
TRANSITION ALTITUDE 6000

BERN-BELP (LSZB)  
ILS RWY 14



Missed APCH climb gradient requirement		STRAIGHT-IN APPROACH			
		OBSTACLE CLEARANCE ALTITUDE (HEIGHT)			
		A	B	C	
2.5%	pressure altimeter	2636 (968)	2653 (985)	2666 (998)	
5.0% up to 3100		2290 (623)	2306 (639)	2319 (652)	
7.0% up to 3100		2113 (445)	2130 (462)	2143 (475)	
		DECISION ALTITUDE (HEIGHT)			
2.5%	pressure altimeter	2636 (968)	2653 (985)	2666 (998)	
5.0% up to 3100		2290 (623)	2306 (639)	2319 (652)	
7.0% up to 3100		2168 (500)			
ROD	GS kt	90	110	130	140
	FT/MIN	637	779	920	991

DME IBE	6.3	6.0	5.0	4.0	3.0	2.0	1.0
DIST THR	5.4	5.1	4.1	3.1	2.1	1.1	0.1
ALT FT	4000	3877	3452	3028	2603	-	-

**CAUTION**  
 - MAX GS 140kt in final APCH to avoid ROD >1000ft/min.  
 - 0.7 NM BFR THR14 Visual Segment Surface (VSS) penetrated by trees up to 1890ft AMSL.  
 - This is not a standard APCH angle.

**REMARK**  
 - Uncategorised ILS APCH RWY 14 due to OBST limitation and restriction according to non-instrument RWY criteria.  
 - ILS14 signal fulfills ICAO Annex 10, CAT I specifications.  
 - Circling according to specific APCH charts.  
 - Training ILS APCH: DA (H) 3000ft (1332ft)

COR: chart renaming (WEF 20FEB2025)

THIS PAGE INTENTIONALLY LEFT BLANK